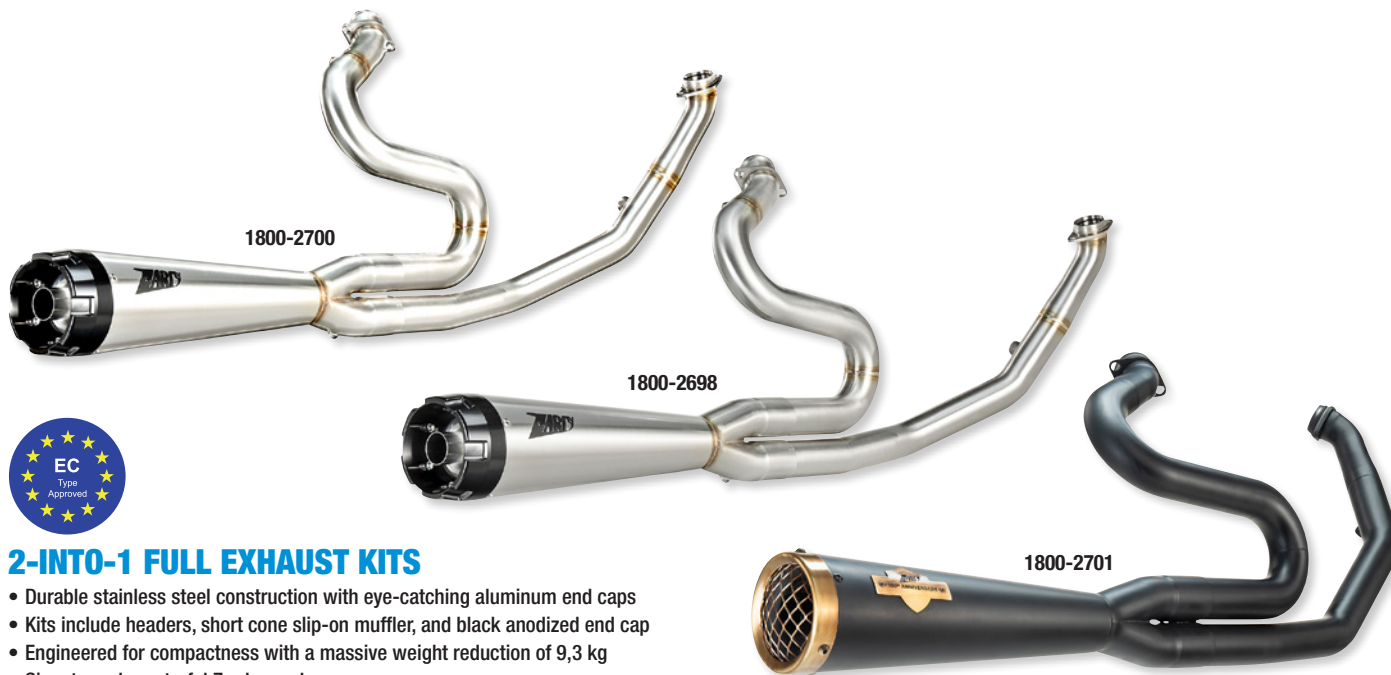




1800-2699



1800-2700

1800-2698

1800-2701



2-INTO-1 FULL EXHAUST KITS

- Durable stainless steel construction with eye-catching aluminum end caps
- Kits include headers, short cone slip-on muffler, and black anodized end cap
- Engineered for compactness with a massive weight reduction of 9,3 kg
- Signature characterful Zard sound
- Black finishes are Cerakote® treated for temperatures up to 1000 °C
- 120th Anniversary kit cultivates a distinctive look with a bronzed mesh end cap and accents
- Euro 4 and Euro 5 certified

PART #	DESCRIPTION
17-24 FLHRXS/FLHXS/FLHXST/FLTRK/FLTRXS/FLTRXST	
1800-2699	Black
1800-2700	Polished

PART #	DESCRIPTION
17-24 FLHRXS/FLHXS/FLHXST/FLTRK/FLTRXS/FLTRXST (CONT)	
1800-2698	Stainless steel
1800-2701	120th Anniversary limited edition



1800-2703



1800-2702



1800-2707

2-INTO-1 FULL EXHAUST KITS

- Durable stainless steel construction with eye-catching aluminum end caps
- Kits include headers, short cone slip-on muffler, and black anodized end cap
- Engineered for compactness with a weight reduction of 4,9 kg
- Signature characterful Zard sound
- Black finishes are Cerakote® treated for temperatures up to 1000 °C
- Euro 4 and Euro 5 certified



PART #	DESCRIPTION
FOR 16-24 FLST/FXBBS/FXLRS/FXLRST	
1800-2703	Black
1800-2704	Polished
1800-2702	Stainless steel

PART #	DESCRIPTION
FOR 16-24 FLFBS/FXBR	
1800-2706	Black
1800-2707	Polished
1800-2705	Stainless steel



1800-2709



1800-2710



1800-2708



2-INTO-1 CONICAL FULL EXHAUST KITS

- Durable stainless steel construction with eye-catching aluminum end caps
- Kits include headers, conical slip-on muffler, and end cap
- Signature characterful Zard sound
- Black finishes are Cerakote® treated for temperatures up to 1000 °C
- Euro 3 certified

FOR 14-22 XL (EXCEPT XL1200T/XL1200X, AND RH SPORTSTER)					
PART #	DESCRIPTION	PART #	DESCRIPTION	PART #	DESCRIPTION
1800-2709	Black	1800-2710	Polished	1800-2708	Stainless steel



1801-1813



SLIP-ON MUFFLERS

- Durable stainless steel construction with eye-catching aluminum end caps
- Designed for seamless integration
- Increase performance by 2 hp and 6,9 Nm of torque

- Signature characterful Zard sound
- Black finishes are Cerakote® treated for temperatures up to 1000 °C
- Euro 4 and Euro 5 certified

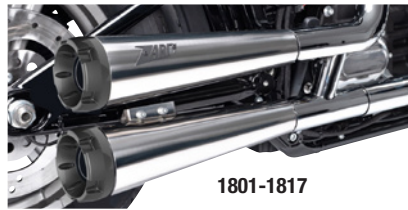


1801-1814

PART #	DESCRIPTION	PART #	DESCRIPTION
FOR 21-24 FLHR/FLHRXS/FLHT/FLHXS/FLTRK/FLTRXS		FOR 16-20 FLHR/FLHRXS/FLHT/FLHXS/FLTRK/FLTRXS	
1801-1812	Black	1801-1814	Black
1801-1813	Polished	1801-1815	Polished



1801-1816



1801-1817



1801-1819



1801-1820



1801-1821



SLIP-ON MUFFLERS

- Durable stainless steel construction with eye-catching aluminum end caps
- Designed for seamless integration
- Engineered for compactness with a total weight reduction of 3,6 kg
- Signature characterful Zard sound
- Black finishes are Cerakote® treated for temperatures up to 1000 °C
- Available in standard and overlapped alignment
- Euro 4 and Euro 5 certified



1801-1818

PART #	DESCRIPTION	PART #	DESCRIPTION
FOR 16-24 FLST/FXBBS/FXLRS/FXLRS		FOR 16-24 FLST/FXBBS/FXLRS/FXLRS (CONT)	
1801-1816	Standard, black	1801-1821	Overlapped, black/bronze
1801-1817	Standard, polished	1801-1820	Overlapped, polished
1801-1819	Overlapped, black	1801-1818	Overlapped, stainless steel



RAM® X-GRIP® KITS WITH VIBE-SAFE™ AND U-BOLT BASE

- High-strength composite and stainless steel construction with a powder-coated marine-grade aluminum
- Include a 25,4 mm (1") diameter rubber ball and socket system with adjustment points at both ends of the socket arm; this, with a twist of the arm knob, allows you to move the X-Grip® mount to optimum viewing position
- Spring-loaded holder expands and contracts for perfect fit of device
- Rubber-coated tips will hold device firm and stable
- The mounting hardware for brake/clutch reservoirs include both standard and metric mounting bolts
- Kits include U-bolts that fit bars 12,7 mm to 31,7 mm (5,5" to 1,25") in diameter
- Socket technology allows for multiple adjustment angles and articulation of device
- Include all necessary mounting hardware



0603-1125



0603-1127

PART

DESCRIPTION

0603-1124	Short arm length 50,8 mm (2"); width range: 44 mm to 114 mm (1 ³ / ₄ " to 4 ¹ / ₂ "); depth range: 22 mm (7/8")
0603-1125	Short arm length 50,8 mm (2"); width range: 47 mm to 82 mm (1 ⁷ / ₈ " to 3 ¹ / ₄ "); depth range: 22 mm (7/8") max
0603-1126	Medium arm length 76,2 (3"); width range: 44 mm to 114 mm (3/4" to 4 ¹ / ₂ "); depth range: 22 mm (7/8") max
0603-1127	Medium arm length 76,2 (3"); width range: 47 mm to 85 mm (1 ⁷ / ₈ " to 3 ¹ / ₄ "); depth range: 22 mm (7/8")



0603-1131



0603-1132



0603-1135

RAM® X-GRIP® PHONE MOUNTING KITS

- High-strength composite and stainless steel construction and powder-coated marine-grade aluminum
- Made of high-strength composite and stainless steel hardware for durability and reliability in the most demanding environments
- A combination of the RAM® X-Grip® Phone Mount with Motorcycle Fork Stem Base and the RAM® Vibe-Safe™
- RAM Vibe-Safe dampens a wide range of vibration frequencies
- Comes with one (1) short B-size arm and one (1) RAM Motorcycle Fork Stem Ball Base and an optional device tether that is recommended for outdoor applications
- Spring-loaded holder expands and contracts for perfect fit of device
- Rubber-coated tips will hold device firm and stable
- Includes all necessary mounting hardware
- PART #'s 0603-1132 and 0603-1135 holder width range is 47,6 mm to 82,5 mm W x 20,32 mm D (1,875" to 3,25" W x 0,8" D)
- PART #0603-1131 holder width range is 44,45 mm to 114,3 mm W x 22,22 mm D (1,75 to 4,5 W x ,875" D)

PART

DESCRIPTION

0603-1131	Large phone holder with ball and Vibe-Safe™ adapter
0603-1132	Phone holder with ball & Vibe-Safe adapter
0603-1135	Phone mount with Vibe-Safe and fork stem base - short



RAM® X-GRIP® PHONE MOUNTS WITH VIBE-SAFE™ AND RESERVOIR BASE

- Vibration damping accessory to protect electronic devices from a wide range of vibration frequencies
- Can rotate between portrait and landscape by loosening the center screw
- Comes with one medium B size arm and one RAM® Motorcycle Brake/Clutch Reservoir & Handlebar Ball Base
- Accommodates rails from 12,7 mm to 31,75 mm (0,5" to 1,25") in diameter
- Compatible with handheld devices that fit a width range of 47,4 mm to 82,55 mm (1,87" to 3,25") and a depth range of 22 mm (0,875") max
- Optional device tether recommended for outdoor applications
- Holder dimensions on PART #0603-1128; width 44,5 mm to 114,3 mm (1,75" to 4,5") and a depth range of 22,2 mm (0,875") max
- Holder dimensions on PART #0603-1129; width 47,6 mm to 82,55 mm (1,875" to 3,25") and a depth range of 22,2 mm (0,875) max



PART #	DESCRIPTION
0603-1128	X-Grip® mount kit for large device

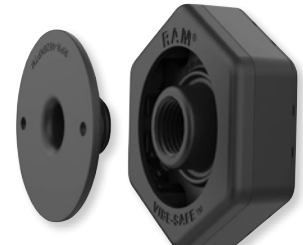
PART #	DESCRIPTION
0603-1129	X-Grip® mount kit



TOUGH-CLAW™ WITH VIBE-SAFE™ ADAPTER

- The perfect mounting base for quick and easy tool-less installation and removal on round, square, odd-shaped rails and bars
- High-strength glass-filled nylon construction with corrosion resistant stainless steel hardware
- Rubber pads provide stable, even gripping and protection of mounting surface
- Ideal for mounting tablets, action cameras, smartphones and much more in a wide variety of applications
- Perfectly suited for mounting on handlebars, racks and roll cages

PART #	DESCRIPTION
0603-1133	Small clamp base with Vibe-Safe™ adapter



RAM® VIBE-SAFE™ WITH NPT ADAPTER FOR 2-HOLE HOLDERS

- Uniquely structured vibration damping accessory designed to protect electronic devices from a wide range of vibration frequencies
- NPT thread connection allows for rotation between portrait and landscape, while remaining secure
- Adapter is compatible with most 2-Hole RAM® Holders, including the RAM Quick-Grip™, RAM Tough-Charge™, RAM Quick-Charge™ & RAM Form-Fit Holders

NOTE: Only compatible with the metal diamond ball adapter.

PART #	DESCRIPTION
0603-1134	Vibe-Safe™ adapter

RAM® QUICK-GRIP™ XL PHONE HOLDER WITH VIBE-SAFE™ ADAPTER AND BALL

- RAM® Vibe-Safe™ dampens a wide range of vibration frequencies
- NPT thread connection allows for rotation between portrait and landscape while remaining secure
- Made of high-strength composite and stainless steel hardware for durability and reliability in the most demanding environments
- Unique structure and thoughtfully designed with all industries in mind
- Includes B size 25,4 mm (1") RAM Mounts rubber balls allow for connection to any B size RAM Mounts double socket arm; ball and socket technology allows for near-infinite adjustability
- Holder dimensions: 14,6 cm to 18,4 cm H x 6,6 cm to 9,2 cm W x 18,29 mm D (5,75" to 7,25" x 2,625" to 3,625" x 0,72")



PART #	DESCRIPTION
0603-1130	Quick-Grip™ XL phone holder with ball



1132-1973

APEX CLUTCH AND BASKET KITS

- 60% increase in torque capacity and clutch engagement, resulting in improved power transfer to rear wheel
- Designed to reduce lever pull effort while increasing lever feel consistency
- Designed for usable power delivery with a wide range of horsepower levels, no need for overly aggressive alternatives like lock-up systems
- Improved clutch modulation and control
- Reduces clutch operating temperatures for improved oil longevity and consistent performance
- Tunable to power needs and rider preference with interchangeable spring combinations to match engine build while minimizing lever force
- Kit includes Fixed-Pin design billet hub, billet pressure plate, complete clutch pack featuring TorqDrive® friction disks, two sets of varied stiffness clutch springs, forged and fully machined clutch basket, basket sleeves and hardware

PART #	DESCRIPTION	PART #	DESCRIPTION	PART #	DESCRIPTION
1132-1973	For 17-24 M-Eight	1132-1974	For 11-17 Twin Cam	1132-1975	For 07-10 Twin Cam



1132-1972

APEX CLUTCH KITS

- Designed to reduce lever pull effort while increasing lever feel consistency
- 60% increase in torque capacity and clutch engagement, resulting in improved power transfer to rear wheel
- Improved clutch modulation and control
- Reduce clutch operating temperatures for improved oil longevity and consistent performance
- Tunable to power needs and rider preference with interchangeable spring combinations to match engine build while minimizing lever force
- Designed for usable power delivery with a wide range of horsepower levels, no need for overly aggressive alternatives like lock-up systems
- Kit includes Fixed-Pin design billet hub, billet pressure plate, complete clutch pack featuring TorqDrive® friction disks, two sets of varied stiffness clutch springs, basket sleeves and hardware

PART #	DESCRIPTION	PART #	DESCRIPTION
1132-1971	For 11-24 Big Twin	1132-1972	For 07-10 Twin Cam



DASH INDICATOR LIGHTS

- Replacement LED indicator for front of bike positioned under handlebars
- Kellermann HighPower LED Technology
- Features EXtranz® - Extreme Optical Transparency Technology
- Compact size with strongly tinted blinker glass
- With a high quality metal housing

- Suitable for 12VDC applications
- Dash A measures: 48 mm L x 13 mm W x 11 mm H
- Dash M measures: 50 mm L x 25 mm W x 13 mm H
- ECE approved

PART #	DESCRIPTION
DASH A	
2020-2207	Front left
2020-2208	Front right

PART #	DESCRIPTION
DASH M	
2020-2209	Front left
2020-2210	Front right



NARROW LEVER SET

- Die cast aluminum construction
- Narrower profile compared to OEM levers
- Available in chrome or matte black
- Sold in pairs



PART #	DESCRIPTION
FOR 24 FLHTK/FLTRK/FLHRXS, 21-23 FLHT/FLHX/FLHR/FLTR (EXCEPT 23 FLHXSE/FLTRXSE), 21-24 H-D FL TRIKE	
0610-2325	Chrome
0610-2326	Matte black
FOR 17-20 FLHT/FLHR/FLHX/FLTRX/FLTRU	
0610-2317	Chrome
0610-2318	Matte black

PART #	DESCRIPTION
FOR 14-16 FLHT/FLHX/FLHR/FLTR AND 06-17 V-ROD W/ OEM HYDRAULIC CLUTCH	
0610-2308	Chrome
0610-2309	Matte black
FOR 08-13 FLHT/FLHX/FLTR/H-D FL TRIKE, 08-16 FLHR (EXCEPT MODELS W/ HYDRAULIC CLUTCH)	
0610-2304	Chrome
0610-2305	Matte black

PART #	DESCRIPTION
FOR 96-17 BIG TWIN	
0610-2300	Chrome
0610-2301	Matte black
FOR 15-24 SOFTAIL (EXCEPT MODELS W/ HYDRAULIC CLUTCH)	
0610-2321	Chrome
FOR 14-22 XL (EXCEPT RH SPORTSTER)	
0610-2312	Chrome
0610-2313	Matte black



SHORT LEVER SETS

- Die cast aluminum construction
- 6,35 cm (2,5") length is 5,5 cm (2,17") shorter than OEM levers
- Includes anti-rattle clip and clutch lever pivot bushings
- Sold in pairs

PART #	DESCRIPTION
FOR 17-20FLHT/FLHR/FLHX/FLTRX/FLTRU	
0610-2319	Chrome
FOR 14-16 FLHT/FLHX/FLHR/FLTR AND 06-17 V-ROD W/ OEM HYDRAULIC CLUTCH	
0610-2310	Chrome

PART #	DESCRIPTION
FOR 08-13 FLHT/FLHX/FLTR/H-D FL TRIKE, 08-16 FLHR (EXCEPT MODELS W/ HYDRAULIC CLUTCH)	
0610-2306	Chrome
FOR 96-17 BIG TWIN	
0610-2302	Chrome

PART #	DESCRIPTION
FOR 96-17 BIG TWIN (CONT)	
0610-2303	Matte black
FOR 14-22 XL (EXCEPT RH SPORTSTER)	
0610-2314	Chrome