

VO2 STINGRAY AIR INTAKE KIT



- Adds just the right touch to enhance the nostalgia of your timeless pushrod V-twin engine
- Improved performance over stock
- Matte black stamped cover featuring the Vance & Hines V-twin logo
- Force velocity stack with maximum flow and ease of installation
- High-capacity washable air filter
- Includes backing plate and breather assemblies
- Includes mounting hardware and installation instructions



PART #	DESCRIPTION
1010-2982	For 91-22 XL models (except RH Sportsters)



VO2 FALCON AIR INTAKE KITS

- Sleek forward-facing 90° intake design
- Race-proven intake tube available in matte black, forged carbon fiber, and weaved carbon fiber
- CNC-machined billet aluminum backing plate, breather stand-offs and flange cover
- Integrated breather assembly using 12-point stainless banjo bolts



1010-2955



1010-2953

PART #	DESCRIPTION
FOR 17-23 FLHT/FLHR/FLHX/FLTRX/FLTRU/H-D FL TRIKES	
1010-2942	Matte black
1010-2950	Forged carbon fiber
1010-2954	Weaved carbon fiber
FOR 08-16 FLHT/FLHR/FLHX/FLTR/H-D FL TRIKES, 16-17 FXDLS, 16-17 SOFTTAILS, 14-15 FLSTNSE, 13-14 FXSBSE, 11-12 FLTSE	
1010-2951	Forged carbon fiber
1010-2955	Weaved carbon fiber
FOR 99-07 FLHT/FLHR/FLHX/FLTR (EXCEPT 99-01 TOURING FUEL INJECTION AND MODELS W/ LOWER FAIRINGS), 00-15 SOFTTAILS (EXCEPT 11-15 CVO MODELS), 99-17 DYNA (EXCEPT 16-17 FXDLS)	
1010-2952	Forged carbon fiber
1010-2956	Weaved carbon fiber

- Washable high-flow oiled-media air filter with stamped V&H logo
- Matched induction module cover on Throttle-By-Wire models
- Mounting hardware and instructions included

NOTE: Not for use on Touring and Trike models with lower fairings.

PART #	DESCRIPTION
FOR 18-23 SOFTTAILS	
1010-2942	Matte black
1010-2950	Forged carbon fiber
1010-2954	Weaved carbon fiber
FOR 91-22 XL (EXCEPT RH SPORTSTER)	
1010-2953	Forged carbon fiber
1010-2957	Weaved carbon fiber



VO2 AMERICA AIR INTAKE KIT

- Crowned with a bold CNC-machined billet aluminum cover adorned with the Stars & Stripes and bolted down with ARP hardware
- Force velocity stack with maximum flow and ease of installation
- High-flow washable air filter
- Includes backing plate, venturi and breather assemblies
- Includes mounting hardware and installation instructions

PART #	DESCRIPTION
1010-2991	For 08-16 FLHT/FLHR/FLHX/FLTR/H-D FL trikes, 16-17 FXDLS, 16-17 Softails, 14-15 FLSTNSE, 13-14 FXSBSE, 11-12 FLTSE models



SWINGARM SADDLEBAG

- Easily mountable using sturdy mounting straps
- Features a rigid plastic back
- Includes protective film to keep the swingarm or frame from being scratched
- 26,5 cm L x 11,5 cm W x 29 cm H (10,5" x 4,5" x 11,5")

NOTE: Not for use with passenger floorboards or passenger footpegs.

PART

3501-2000

DESCRIPTION

For 99-23 Softail



LEATHER BLACKJACK SWINGARM BAG

- Durable bag construction using high-quality synthetic black leather with black buckle
- Easily mountable with 3 leather mounting straps that slide into mounting slots for simple, secure installation; designed to be mounted on left side of motorcycle
- Magnetic closure for extra security
- 26,5 cm L x 29 cm W x 11.5 cm H (10,5" L x 11,5" W x 4,5" H)

PART

3501-2001

DESCRIPTION

For 86-22 XL (except RH Sportsters)

BLACKJACK SWINGARM BAG 4.0

- A blacked-out, compact left side solo bag made specifically for Sportster bikes
- Made up of a all-black synthetic leather that is UV-protectant and water-resistant
- Plastic backing and interior support ensures durability after repeated use
- Includes all mounting straps for simple, secure installation
- Possess a 4.0L holding capacity
- 34 cm L x 14,5 cm W x 29 cm H (13,5" x 11,5" x 5,75")

PART

3501-2002

DESCRIPTION

For 86-22 XL (except RH Sportsters)





KICKFLIP SEAT

- The world is your playground...shred it!
- The seat that every freestyler would be stoked to own
- Top-grade, black vinyl cover
- Baseplate is powdercoated steel and carpeted to protect painted surfaces
- Featuring Le Pera's Marathon Foam for maximum stability and comfort
- Handcrafted with Le Pera's iconic attention to detail

PART

FOR 18-23 FXLR/FXLRS/FXLRST/FLSB

0801-1462

DESCRIPTION

Track Pleat stich seat



TAILWHIP SEAT

- Takes the Kickflip one step further
- If it's more comfort for the passenger or just another platform to let your adventurous side explore, the whipped-up tail will give you what you are looking for
- Molded Marathon Foam
- BikerTec custom cover
- Driver seating 31 cm W (12,25"); passenger seating 18 cm W (7")
- Highly detailed powdercoated steel carpeted base

PART

FOR 18-23 FXLR/FXLRS/FXLRST/FLSB

0801-1461

DESCRIPTION

Track Pleat stitch seat



53,3 CM (21") SISSY BAR

- Durable steel construction
- Solid mount with bolt-on installation
- Powdercoated in gloss black for longevity
- Integrated backrest pad for passenger comfort, pad measures 15,25 cm (6") x 7,6 cm (3") x 6,4 cm (2.5")

PART

1501-0787

DESCRIPTION

For 22-23 RH975





HP+ CONVERSION CAMSHAFT HYDRAULIC CAM CHAIN TENSIONER KITS

- Kits include the needed components to upgrade early 99-06 style mechanical spring tensioner cam chain drive systems to the late 07-17 hydraulic cam chain drive system
- Includes a Feuling HP+ billet oil pump, High Flow camplate, HP+ lifters, Feuling's billet hydraulic tensioner housings, tensioner pads, cam chains, sprockets, sprocket alignment spacers, Timken®/Feuling bearings, needed gaskets, O-rings, ARP® cam, crank hardware, Loctite® and moly lube

NOTE: Rocker box gasket kit included so the factory one-piece pushrods can be reused.



0925-1501

PART # DESCRIPTION

FOR CONVERSION STYLE CAMSHAFTS

0925-1501¹ Conversion Camshaft Hydraulic Tensioner Kit. Fits: 99-00 Twin Cam and 01 Bagger Magneti Marelli equipped ignition system engines requiring the timing tab on the rear camshaft sprocket for the cam sensor

0925-1502¹ Conversion Camshaft Hydraulic Tensioner Kit. Fits: 01-06 Twin Cam Delphi equipped ignition system engines w/o cam sensor

FOR 99-06 STYLE CAMSHAFTS

0925-1503² Conversion camplate Hydraulic Tensioner Kit. Fits: 99-00 Twin Cam and 01 Bagger Magneti Marelli equipped ignition system engines requiring the timing tab on the rear camshaft sprocket for the cam sensor with factory 00-06 style splined chain drive camshafts

0925-1504² Conversion camplate Hydraulic Tensioner Kit. Fits: 01-06 Twin Cam Delphi equipped ignition system engines w/o cam sensor with factory style 00-06 splined chain drive camshafts

¹ Requires separate purchase of conversion camshafts PART #s 0925-0671, 0925-0606, 0925-0607, 0925-0608, 0925-0672.

² Will NOT work on keyway camshafts.



0925-1505

RACE SERIES HYDRAULIC CAM CHAIN TENSIONER CONVERSION KITS

- Kits include the needed components to upgrade early 99-06 style mechanical spring tensioner cam chain drive systems to the late 07-17 hydraulic cam chain drive system
- Includes a Feuling Race Series billet oil pump, High Flow camplate, Race Series full-travel lifters, Feuling's billet hydraulic tensioner housings, tensioner pads, cam chains, sprockets, sprocket alignment spacers, Timken®/Feuling bearings, needed gaskets, O-rings, ARP® cam, crank hardware, Loctite® and moly lube

NOTE: Rocker box gasket kit included so the factory one-piece pushrods can be reused.

PART # DESCRIPTION

FOR CONVERSION STYLE CAMSHAFTS

0925-1505¹ Conversion Camshaft Hydraulic Tensioner Kit. Fits: 99-00 Twin Cam and 01 Bagger Magneti Marelli equipped ignition system engines requiring the timing tab on the rear camshaft sprocket for the cam sensor

0925-1506¹ Conversion Camshaft Hydraulic Tensioner Kit. Fits: 01-06 Twin Cam Delphi equipped ignition system engines w/o cam sensor

FOR 99-06 STYLE CAMSHAFTS

0925-1507² Conversion camplate Hydraulic Tensioner Kit. Fits: 99-00 Twin Cam and 01 Bagger Magneti Marelli equipped ignition system engines requiring the timing tab on the rear camshaft sprocket for the cam sensor with factory 00-06 style splined chain drive camshafts

0925-1508² Conversion camplate Hydraulic Tensioner Kit. Fits: 01-06 Twin Cam Delphi equipped ignition system engines w/o cam sensor with factory style 00-06 splined chain drive camshafts

¹ Requires separate purchase of conversion camshafts PART #s 0925-0671, 0925-0606, 0925-0607, 0925-0608, 0925-0672.

² Will NOT work on keyway camshafts.



0925-1508



M-EIGHT STUD KITS

STUDS

- 4140 chrome-Moly studs, oil-quenched and tempered to 39-44 HRC
- 180.000 psi tensile strength
- Rounded thread roots, rather than flat, improve fatigue strength
- Positive stop shoulder allows for consistent installed height

HEADBOLTS

- Reusable
- 14% increase over stock
- Heat-treated 8640 steel
- 200.000 psi tensile strength
- Durable black oxide coating
- $\frac{9}{16}$ " 12-point heads with integral washers
- Formed threads
- Cold formed heads
- Compatible with both MLS or graphite head gaskets



2401-1621



2401-1622

PART #	DESCRIPTION
FOR ALL 17-23 M-EIGHT MODELS	
2401-1621	Cylinder stud and bolt kit
2401-1622	Cylinder stud kit (8-pack)



DUAL SPRAY PISTON COOLING JET KIT

- Dual Spray technology evenly cools both intake and exhaust sides of pistons
- Revised spray locations for more effective cooling
- Creates a cooler engine with more power and better durability
- Made from billet 6061-T6 aluminum
- Anodized in S&S Performance Blue
- Shortened nozzle for increased rod clearance
- Includes all necessary hardware and gaskets



PART #	DESCRIPTION
0950-1025	For 17-23 M-Eight engines



S&S CYCLE BEANIE

- Features tassel pom, turn-up cuff, wraparound custom knit-in graphic and woven side tab
- Acrylic knit for added warmth
- One size fits most

PART #	DESCRIPTION
2501-3532	S&S Cycle beanie



REPLACEMENT PULLEY/SPROCKET SPACER SEAL FOR 5-SPEED BIG TWIN AND XL

- Sold individually

PART #	DESCRIPTION
1106-0242	For 94-99 Big Twin and XL



1624-0397



1624-0398

CUSTOM ACCENT PEGS

- Pegs with anti-vibration rubber inlays
- Folding design stainless steel clevis mounts
- Stainless steel 3/8" bolts will fit most arms and clamps
- Sold in pairs

PART #	DESCRIPTION	PART #	DESCRIPTION
1624-0397	Black custom accent pegs	1624-0398	Chrome custom accent pegs



1621-1057



1621-1058

MINI BOARDS

- Economical alternative to factory Harley-Davidson® pegs, boards and highway pegs
- Reversible rubber on one side with rubber inlays on the other
- Male-mount style
- Measure 4" x 4"
- Sold in pairs

PART #	DESCRIPTION	PART #	DESCRIPTION
1621-1057	Matte black mini board	1621-1058	Chrome mini board

HIGHWAY PEGS WITH FRAME MOUNTS

- 13" long CNC-machined billet aluminum pegs and mounts clamp securely to 1 1/2" frame down tubes
- Adjust 8" forward and back to accommodate any leg length or riding position
- Anti-vibration pegs feature 3/8" mounting bolts and unique locking setscrew system that lets riders set the peg angle to their comfort level
- No-rust stainless steel hardware
- Semi gloss powdercoated
- Sold in pairs



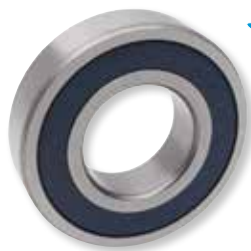
PART #	DESCRIPTION
1620-2377	For HD models w/ 1 1/2" down tubes

ADJUSTABLE PASSENGER BOARD MOUNTS FOR USE WITH RINEHART EXHAUST

- Allow fitting passenger floorboards on models using Rinehart exhaust systems
- 9" range of motion
- Use factory passenger boards (not included)
- No tool required adjustment
- Will work on Tri-Glide but limited movement due to rear tire



PART #	DESCRIPTION
1621-1059	For 99-23 FLT/FLHT/FLTRU/FLTRK/FLTRX/FLHR/FLHX/FLHTCUTG w/ Rinehart exhaust



CLUTCH HUB BEARING

PART #	DESCRIPTION
1132-0197	For 71-E84 XL; repl. OEM #37722-71



INNER PRIMARY COVER MAINSHAFT BEARING

- Sealed ball bearing fits into aluminum inner primary covers to support transmission mainshaft
- Sold individually

PART #	DESCRIPTION
1120-0177	For 65-86 Big Twin; repl. OEM #s 9061 and 9040

STEERING STEM BEARING KITS AND BEARINGS

- PART #22-1032 neck post bearing and race complete replacement kit (includes two bearings, two races and two dust seals)
- PART #0410-0294 neck post bearing and race complete replacement kit (includes bearings, races and upgraded rubber dust seals)
- Neck post bearing/race set and neck post bearing also available individually



22-1032



0410-0090

PART #	DESCRIPTION
FOR 14-23 FLHT/FLTRX/FLTRU/FLTRK/FLHR/FLHX	
0410-0294	Neck post bearing and race kit; repl. OEM #45700009
FOR 80-13 FLT/FLHT/ FLTR/ FLHR; 84-22 SOFTTAIL MODELS; 91-17 DYNA GLIDE; 82-94 FXR; 60-85 FL/FX/FXWG; 86-22 XL (EXCEPT RH SPORTSTER MODELS), 02-17 V-ROD, 15-20 XG500/750	
22-1032	Neck post bearing and race kit; repl. OEM #s 48300-60, 48315-60
0410-0090	Bearing and race set
0410-0091	Neck post bearing only (ea.); repl. OEM #48300-60
0410-0225	Outer race/cup only; repl. OEM #48315-60

INNER PRIMARY MAINSHAFT BEARING/SEAL KITS

- Includes pinion seal (PART #1120-0162 only), main shaft seal, bearing snap rings, inner bearing race and bearing
- Fits OEM and most aftermarket inner primaries
- PART #1120-0281 includes OEM #s 12052A, 60678-85, 34091-08 and 9231; PART #1120-0162 includes OEM #s 12066, 12053, 12052, 60678-85 (2) and 34091-85, 9135
- Inner race PART #1120-0305 and primary bearing PART #1120-0306 fit most OEM and most aftermarket inner primaries



1120-0281



1120-0162



1120-0306

PART #	DESCRIPTION
1120-0281	Inner primary bearing and seal kit for 08-23 Big Twin
1120-0162	Inner primary bearing and seal kit for 89-06 Big Twin (except 06 Dyna Glide)
1120-0305	Inner race for 07 Softail, 06-07 Dyna and 07 FLHT models; repl. OEM #34091-06
1120-0306	Inner primary bearing for 07 Softail, 06-07 Dyna and 07 FLHT models; repl. OEM #9231

INNER PRIMARY MAINSHAFT BEARING/SEAL KIT

- Kit includes sealed ball bearing, seal and snap ring
- Designed for use on straight splined shafts only
- Designed for stock-style clutches only

PART #	DESCRIPTION
1120-0217	For 99-06 Twin Cam (except 06 Dyna Glide), 91-99 Evolution Big Twin





FORK SEAL AND DUST WIPER KITS

- Seal profile is engineered to create equal pressure in each seal lip; equalized seal pressure creates less drag and longer seal life
- MAX-LIFE has a coefficient of friction up to three times less than the OEM seal material
- Triple-lip seal design
- Directional ribs allow seal to be installed easily
- Kits include fork seals and dust wipers



0407-0345

PART #	DESCRIPTION
0407-0343	For 84-13 FLT/FLHT/FLHR/FLHX/FLTR/HD FL Trike, 84-17 FXS/FXST/FLS/FLST, 12-16 FLD, 93-05 FXDWG, 84-86 FXWG, 03 Buell XB9S/XB9R, 00-02 Buell X1, 99-01 Buell Thunderbolt (41 mm forks)
0407-0345	For 17 FXSE, 08-10 XR1200/1200X, 11-17 VRSCF, 06-07 VRSCR, 53-85 XR1000, 04-09 Buell XB9S/XB9R, 05-09 Buell XB 12S/12R/12X (43 mm inverted forks)
0407-0675	For 13-16 FXSB/SE, 08-11 FXCW/C, 06-17 FXD/FXDWG, 16-21 XL1200X/XS, 02-11 V-Rod (49 mm)

PART #	DESCRIPTION
0407-0674	For 91-05 FXD, L87-00 FXR, L87-21 XL (except XL1200X/XS (39 mm))
0407-0676	For 15-20 XG500/750 (except 750A)
0407-0346	For 09 Buell 1125CR, 08-09 1125R
0407-0344	For 97-02 Buell M1 Cyclone



0407-0669

0407-0057

FORK SEAL AND DUST SEAL KITS

- Patent-pending seal design and special elastomer has 1/3 of the stiction and up to four times the life of an OEM seal
- Dual-lip design balances the drag forces across both sealing lips, resulting in less lip distortion, which extends seal life and reduces seal operating temperature
- Sold in pairs or 10-pk. as noted

PART #	DESCRIPTION
FOR 14-22 FLHT/FLHR/FLHX/FLTRX/FLTRU/FLTRK, FL TRIKE, 18-22 SOFTTAILS, 08-11 FXCW, 06-17 FXD/FXDWG, 16-21 XL1200X/XS, 02-11 VRSC W/ 49 MM FORKS	
0407-0192	Fork seals (pr.); repl. OEM #46514-01
0407-0669	Fork seals (10-pk); repl. OEM #46514-01
FOR 8-13 FLT/FLHT/FLHX/FLHR/FLTR AND H-D FL TRIKE MODELS, 84-17 FXS/FXST/FLS/FLST MODELS, 12-16 FLD, 93-05 FXDWG MODELS, 84-86 FXWG MODELS W/ 41 MM SHOWA FORKS	
0407-0058	Fork oil seals (pr.); repl. OEM #45875-84
0407-0668	Fork oil seals (10-pk) ; repl. OEM #45875-84
FOR 91-05 FXD, L87-99 FXR MODELS AND L87-21 XL MODELS W/ 39 MM SHOWA FORKS	
0407-0057	Fork oil seals (pr.); repl. OEM #45378-87

SWINGARM BEARING AND RACE

- Bearing and race for various H-D models
- Sold as a set



0502-0194

PART #	DESCRIPTION
0215-0205	Bearing w/ race for 58-86 FL/FX/FXWG (set); repl. OEM #s 9033 and 9052
0502-0194	Right bearing and race for 86-99 XL; also fits left swingarm bearing and race for 91-05 Dyna Glide, 82-85 XL; repl. OEM #47082-81
0502-0196	Bearing and race for L74-81 XL, 77-78 XLCR; will also fit earlier models that have been updated w/ bearing kit #47550-74 (ea.); repl. OEM #47521-74



1302-0367

SWINGARM BEARING KITS

- Individual bearing kits that include required bearings for models listed

PART #	DESCRIPTION
1302-0367	For 02-23 FLT/FLHT/FLHR/FLHX/FLTR/FLTRU/FLTRK models; repl. OEM #9208
1302-0091	For 00-17 Softtail models; repl. OEM #s 9209, 9270A, 11282
1302-0084	For 84-99 FXST/FLST; repl. OEM #s 9076, 11158
1302-0001	For 58-86 FX/FXWG/FLH (except Softtail, FXR, FLT)



0215-0962

0215-0638

WHEEL BEARINGS AND KITS

- 00-23 kits are premium EMQ quality featuring rubber seals that keep water out and improve grease retention
- 86-99 kits have tapered bearings and seals
- PART #0215-0962 includes one OEM #9276A bearing and one OEM #9252 bearing with ABS encoder; PART #0215-0963 includes three OEM #9276A bearings and one OEM #9252 bearing with encoder; PART #0215-0964 includes one OEM #9252 bearing with OEM encoder
- Sold in kits containing bearings/seals for one wheel, unless noted

NOTE: Follow OEM-prescribed procedures for installing and checking wheel bearing end play.

PART #	DESCRIPTION	REPL. OEM #	SIZE
FRONT APPLICATIONS			
0215-0962	For 08-23 FLHT/FLHX/FLHR/FLTR/FLTRX/FLTRU/FLTRK (w/ ABS)	9276A/B/9252A	25 mm ID
0215-0225	For 08-19 FLHT/FLHX/FLHR/FLTR (w/o ABS)	9276	25 mm ID
25-1394	For 00-07 FLT/FLHT/FLHR/FLHX/FLTR	9247	1" ID
A25-1002	For 82-99 FLT/FLHT/FLHR/FLHS/FLTR, 73-84 FLH	9052	3/4" ID
0215-0962	For 18-23 Softail, 11-17 FXS/FLS/FLST/FXCW models (w/ ABS)	9276A/B/9252A	25 mm ID
0215-0225	For 07-23 Softail models (w/o ABS) (except FLSTSB)	9276	25 mm ID
A25-1368	For 00-06 FXST/FLST, 00-07 FLSTS/C	9267	3/4" ID
A25-1002	For 84-99 FLST/FXST, 80-86 FXWG, 93-98 FXDWG	9052	3/4" ID
0215-0962	For 12-17 FXD/FXDWG/FLD models (w/ ABS)	9276A/B/9252A	25 mm ID
0215-0225	For 08-17 FXD/FXDWG models (w/o ABS)	9276	25 mm ID
A25-1368	For 00-03 FXD, 00-05 FXDWG	9267	3/4" ID
25-1394	For 04-07 FXD/FXDL, 06-07 FXDWG	9247	1" ID
A25-1001	For 91-99 FXD, 73-84 FX, 82-94 FXR	9052	3/4" ID
A25-1002	For 99 FXDWG	9052	3/4" ID
0215-0962	For 08-17 V-Rod (w/ ABS)	9276A/9252	25 mm ID
0215-0225	For 08-17 V-Rod (w/o ABS)	9276	25 mm ID
25-1394 ¹	For 02-07 VRSC	9247	1" ID
0215-0962	For 15-21 XL models (w/ ABS)	9276A/B/9252A	25 mm ID
0215-0225	For 08-21 XL (w/o ABS)	9276	25 mm ID
A25-1368	For 00-07 XL	9267	3/4" ID
A25-1001	For 73-99 XL	9052	3/4" ID
0215-0640	For 03-06 Firebolt XB9R	E0004.02A8A	-
0215-0640	For 03-09 Lightning XB9S	E0004.02A8A	-
0215-0640	For 08-09 1125CR/R	E0004.02A8A	-
0215-0640	For 05-08 Firebolt XB12R	E0004.02A8A	-
0215-0640	For 05-09 Lightning XB12S	E0004.02A8A	-
0215-0640	For 06-09 Ulysses XB12X	E0004.02A8A	-

REAR APPLICATIONS

0215-0963	For 09-23 FLHT/FLHX/FLHR/FLTR/FLTRX/FLTRU/FLTRK (w/ ABS) (4-pc.)	9276A/B/9252A	25 mm ID
-----------	--	---------------	----------

FOR CUSTOM APPLICATIONS (EA.)

PART #	DESCRIPTION	SIZE
0215-0946	For 3/4" custom applications	3/4" ID x 1,85" OD x 0,55" W

PART #	DESCRIPTION	REPL. OEM #	SIZE
REAR APPLICATIONS (CONT)			
0215-0288	For 09-19 FLHT/FLHX/FLHR/FLTR (w/o ABS); (4-pc.)	9276	25 mm ID
0215-0225	For 08 FLHT/FLHX/FLHR/FLTR (w/o ABS); (pr.)	9276	25 mm ID
A25-1368	For 00-01 FLHT/FLHR/FLTR	9267	3/4" ID
A25-1002	For 82-99 FLT/FLHT/FLHR/FLHS/FLTR, 73-84 FLH	9052	3/4" ID
0215-0962	For 18-23 Softail, 11-17 FXS/FLS/FLST/FXCW models, 12-17 FXD/FXDWG/FLD models (w/ ABS)	9276A/B/9252A	25 mm ID
0215-0225	For 08-23 Softail, 08-17 FXD/FXDWG models (w/o ABS)	9276	25 mm ID
A25-1002	For 84-99 FXST/FLST, 80-86 FXWG, 93-98 FXDWG	9052	3/4" ID
A25-1368	For 00-05 FXD/FXDWG, 00-07 FXST and FLST	9267	3/4" ID
A25-1002	For 91-99 FXD, 99 FXDWG, 73-84 FX, 82-94 FXR	9052	3/4" ID
25-1394 ¹	For 02-07 FLT/FLHT/FLHR/FLHX/FLTR, 06-07 FXD, 06-07 FXDWG, 02-07 VRSC	9247	1" ID
0215-0962	For 08-17 V-Rod (w/ ABS)	9276A/B/9252A	25 mm ID
0215-0225	For 08-17 V-Rod (w/o ABS)	9276	25 mm ID
0215-0962	For 15-21 XL models (w/ ABS)	9276A/B/9252A	25 mm ID
0215-0225	For 08-21 XL w/o ABS	9276	25 mm ID
25-1394	For 05-07 XL	9247	1" ID
A25-1368	For 00-04 XL	9267	3/4" ID
A25-1002	For 79-99 XL	9502	3/4" ID
0215-0639	For 00-09 Blast	E6204	-
0215-0638	For 03-06 Firebolt XB9R	E0005.02A8A	-
0215-0638	For 03-09 Lightning XB9S	E0005.02A8A	-
0215-0638	For 08-09 1125CR/R	E0005.02A8A	-
0215-0638	For 05-08 Firebolt XB12R	E0005.02A8A	-
0215-0638	For 05-09 Lightning XB12S	E0005.02A8A	-
0215-0638	For Ulysses XB12X 06-09	E0005.02A8A	-
WHEEL BEARING W/ ABS ENCODER (EA.)			
0215-0964	All models w/ ABS	9252	25 mm ID

¹ Not for VSRC models with 240 mm rear tire.



0215-0205



WHEEL BEARINGS

- Direct replacement of OEM components
- Fits front or rear applications

PART #	DESCRIPTION
0215-0205	Wheel bearing w/ race for 73-99 FX, FL; 82-94 FXR, FXRS, FXRT; 82-99 FLT/FLHT/FLHR/FLTR, 84-99 FXST/FLST, 91-98 FXD/FXDWG , 73-99 XL (ea.); repl. OEM #9052

PART #	DESCRIPTION
0215-0206	Wheel bearing for 67-72 FL, 71-72 FX rear wheels; repl. OEM #43577-67
0215-0204	Wheel bearing for 54-72 K and XL front wheels and 63-78 XL rear wheels; repl. OEM #9009



TOOL KIT FOR PAN AMERICA

- The RoadTech™ PA1 tool kit is specifically designed for roadside repairs and adjustments on the Harley-Davidson Pan America
- Includes top-grade combination wrenches, an 8" adjustable wrench, locking pliers, tire gauge, hex & torx keys, 6-in-1 screwdriver, a 70-tooth mini ratchet, extensions, and socket set
- Comes with a 36 mm axle wrench with lightweight aluminum extension that provides 12 inches of leverage for removing the high-torque axle nut on the Pan America and an included 32 mm axle wrench to hold the other side of the axle when removing the axle nut

PART #	DESCRIPTION
3812-0752	Pan America tool kit