



GRAND NATIONAL 2-INTO-1 EXHAUST SYSTEMS

- High-performance 2-into-1 system designed to make optimum power with a deep, throaty exhaust sound
- Stainless steel headers
- Full-length heat shields
- Durable flat black finish
- Gloss black aluminum end cap
- Removable dB reducer allows you to tune for sound and performance
- Does not require tuning

| PART # | DESCRIPTION |
|-----------|---|
| 1810-3127 | For 19-23 Indian Scout/Scout Bobber/Scout Sixty |



1001-0091



1001-0092

SUPER E OR G CARBURETOR/STEALTH AIR CLEANER KITS

- Combines a Super E or G carburetor with the S&S Stealth air cleaner
- Increases fuel and airflow for added performance
- Variable position enrichment starting system
- O-ring sealed idle mixture screw
- Washable, reusable air filter element

| PART # | DESCRIPTION |
|---------------------------|---|
| FOR 06 TWIN CAM | |
| 1001-0091 | Super E carburetor and Stealth air cleaner kit w/ chrome teardrop air cleaner cover |
| 1001-0092 | Super G carburetor and Slasher Stealth air cleaner kit w/ chrome slasher teardrop air cleaner cover |
| FOR 99-05 TWIN CAM | |
| 1001-0089 | Super E carburetor and Stealth air cleaner kit w/ chrome teardrop air cleaner cover |
| 1001-0090 | Super G carburetor and Slasher Stealth air cleaner kit w/ chrome slasher teardrop air cleaner cover |

- Teardrop style air cleaner cover
- Adjustable accelerator pump for quick throttle response and easy starting
- Uses the factory dual-cable throttle system for smooth, reliable operation
- Easy to install and tune
- Easy integration with S&S Long Block engines

| PART # | DESCRIPTION |
|-------------------------------------|--|
| FOR 84-99 EVOLUTION BIG TWIN | |
| 1001-0085 | Super E carburetor and Stealth air cleaner kit w/ chrome teardrop air cleaner cover |
| 1001-0086 | Super E carburetor and Stealth air cleaner kit w/ gloss black teardrop air cleaner cover |
| 1001-0087 | Super G carburetor and Slasher Stealth air cleaner kit w/ chrome slasher teardrop air cleaner cover |
| 1001-0088 | Super G carburetor and Slasher Stealth air cleaner kit w/ gloss black slasher teardrop air cleaner cover |



B4 2-INTO-1 EXHAUST SYSTEM

- Features equal-length headers
- Stepped 1 $\frac{3}{4}$ " to 1 $\frac{7}{8}$ " headpipes with heat shields
- Utilizes an advanced inner collector for maximum performance
- 4" straight can muffler with matching billet end cap
- Available in black chrome finish

PART

1800-2627

DESCRIPTION

For 17-23 FLHT/FLHR/FLHX/FLTRX/FLTRU/FLTRK models



RINEHART
RACING

MOTOPRO 45 SLIP-ON MUFFLERS

- Unmistakable Rinehart Racing sound that unlocks the full potential of your Thunderstroke motor
- Stout 4,5" OD diameter muffler body and proprietary 2,5" OD Spiral Core baffles
- Chrome muffler body finish with black billed aluminum end caps
- Can be used with Rinehart Racing Slimline Dual Header Kit to make a full system (header kit sold separately)
- Will accept Rinehart Racing 4,5" Moto Series end caps (sold separately)
- Does not require EFI tuning when installed with OEM headers

PART

1811-4477

DESCRIPTION

For 20-22 Challenger/Dark Horse/Elite/Limited, 14-22 Chieftain/Classic/Dark Horse/Elite/Limited, 22 Pursuit Dark Horse/Limited, 15-22 Roadmaster/Classic/Dark Horse/Elite/Limited, 22 Super Chief Limited



EXFIL-80 2.0 BAG

- Roll-top closure with hook-and-loop material and side release buckles
- PVC-backed for increased water resistance
- UV-treated 1680 ballistic polyester
- High-viz orange interior liner
- Three removable, 38 mm (1,5") mounting straps with reflective stitching
- Pass-thru zipper allows for opening the bag without unbuckling it from the bike
- Hook-and-loop material-mounted, removable tool pouch
- Includes more rugged, built-in tool pouch
- Tool compartment includes mesh pocket and a flat document pocket
- Tool compartment holds nine deep sockets and seven combination wrenches and also includes mesh pocket and flat document pocket (tools not included)
- Larger backrest pad, and more robust buckles/straps throughout
- Waterproof sleeve in zippered compartment at base of bag
- Five rows of MOLLE webbing for modular customization
- SBS zippers
- Shoulder strap included
- Holds up to 80 355 ml (12 US fl oz.) cans
- Contents not included
- Overall dimensions when full and closed: 51 cm H x 35,5 cm W x 30,5 cm D (20" x 14" x 12")



PART

3515-0238

DESCRIPTION

EXFIL-80 2.0 bag



EXFIL-3 BAG

- Designed to fit motorcycle with tall riser and sissy bar combinations, but can be mounted virtually anywhere on the bike
- Great for storing gloves, tools, phones or up to three 355 ml (12 US fl oz.) cans
- Constructed from water-resistant, UV-treated 500 tarpaulin PVC
- Features MOLLE loop system in front of bag
- Interior organizing panels are removable to fit larger items
- Comes with six reinforced hook-and-loop straps for mounting
- Dimensions: 17 cm W x 25,5 cm H x 89 mm D (6³/₄" x 10" x 3¹/₂")



PART

3516-0291

DESCRIPTION

EXFIL-3 bag





EXFIL-60 1.0 AND 2.0 BAGS

- Roll-top closure with reinforced nylon quick-release buckles
- UV-treated 1680D ballistic polyester nylon construction
- PVC treatment on exterior panels increases weather resistance
- High-viz orange interior liner
- Convenient pouch behind the front flap keeps items secure but within easy reach
- Outer and inner zippered pockets on front flap for extra storage
- Includes weather-resistant cover that can be stored in zippered pocket on the bottom of the bag
- Rugged SBS zippers
- Padded nylon shoulder strap is removable and adjustable for easy portage
- 2.0 bag features three removable 38 mm (1,5") wide mounting straps with reflective stitching provide and seven rows of MOLLE webbing allow for modular customization and secondary gear attachment
- Additional improvements of 2.0 bag: new cargo flap with hook-and-loop featuring laser-cut MOLLE exterior, elastic shock cord near cargo flap to keep gear tidy and rugged rip-stop inside pocket
- 1.0 bag features five 38 mm (1,5") wide mounting straps with reflective stitching and three rows of MOLLE webbing
- Hold up to 60 355 ml (12 US fluid ounce) cans
- Contents not included
- Overall dimensions (when full and closed): 35,5 cm W x 28 cm D x 45,5 cm T (14" x 11" x 18")



3516-0402

| PART # | DESCRIPTION |
|-----------|------------------|
| 3516-0328 | EXFIL-60 1.0 bag |

| PART # | DESCRIPTION |
|-----------|------------------|
| 3516-0402 | EXFIL-60 2.0 bag |



3516-0342



3516-0403



EXFIL-65 1.0 & 2.0 BAGS

- Roll-top closure with reinforced nylon quick-release buckles
- UV-treated 500D sides and 1000D bottom are PVC-coated and waterproof
- Woven reflective thread enhances nighttime visibility
- Ballistic-grade 5 cm (2") nylon loops and box-stitched handles on sides
- MOLLE webbing allows for modular customization and secondary gear attachment
- 2.0 bag features FVT valve that allows air out of the back for maximum compression
- Universal fitment
- Both bags can hold up to 65 355 ml (12 US fluid ounce) cans
- Closed dimensions: 56 cm H x 30,5 cm W (22" x 12")

| PART # | DESCRIPTION |
|-----------|------------------|
| 3516-0342 | Exfil-65 1.0 bag |
| 3516-0403 | Exfil-65 2.0 bag |



EXFIL-48 BACKPACK

- Designed by riders, for riders and packed with moto-centric features
- Bottom outside pouch folds out to reveal two rugged zippered compartments and wrench pockets
- Vertical compression straps keep things from bouncing around, secure the bag to luggage racks and can be used to add a bedroll or jacket to the outside of the bag
- Two large internal pockets that can be rolled up when not in use to increase interior volume
- Main interior compartment has a padded laptop sleeve with elastic retainers
- Top outer pouch has a fleece-lined pocket for delicate objects like glasses or a phone
- Center compression straps cinch to reduce bulk and shifting while riding
- Holds up to 48 355 ml (12 US fluid ounce) cans
- Features ventilated mesh material over molded Bio-Foam inserts to allow for airflow
- Bottom portion of the bag is PVC-coated for water-resistance and easier cleanup
- Constructed from 1600D/PVC outer shell with high-viz orange interior lining
- Dimensions: 29 cm W x 25,5 cm D x 45,5 cm T (11½" x 10" x 18")

PART #
3517-0450

DESCRIPTION
EXFIL-48 backpack

EXFIL-7 BAG

- Features tough ballistic polyester material with a coated, weather-resistant PVC backing
- Double-thick exterior wall construction with internal padding for protection and durability
- Military-spec orange interior panels on main and secondary compartments for enhanced material search and recovery inside the bag
- 25 mm (1") wide nylon modified MOLLE system on perimeter panels and back for strap placement; includes four reinforced leather straps with nickel-plated buckles
- One main and two pocket compartments with YKK® nylon zippers
- Cast alloy zipper pulls with polyester knotted rope extenders for easy operation with gloves
- Antique brass drain grommets on floor panel for moisture evacuation
- 32 mm (1,25") wide cinch straps with heavy-duty nylon quick-release buckles help secure load after packing, to reduce movement and rattling
- Fully customizable for different applications and mounting locations including frame's down tubes, above the headlight, on tall and mid-sized handlebars and, of course, on both sides of sissy bars
- Main compartment dimensions: 28 cm x 14,5 cm x 12 cm (11" x 5,75" x 4,75")
- Large pocket dimensions: 25 cm x 14,5 cm w/ 20,5 cm opening (9,75" x 5,75" / 8")
- Small pocket dimensions: 14,5 cm x 11 cm w/ 11,5 cm opening (5,75" x 4,25" / 4,5")



3516-0195



3516-0217



PART #
3516-0195

COLOR
Black

PART #
3516-0217

COLOR
Green



EXFIL-11 TANK BAG

- Biltwell's answer to the ubiquitous motorcycle tank bag
- Padded main compartment holds up to 11 355 ml (12 ounce) cans
- Attaches with magnets that are strong enough to hold the bag in any condition and at high speeds, regardless of if the bag was loaded or empty
- Multiple attachment points if you'd like to use your own "dummy cord" or otherwise strap it to the bike
- Front dimensions: 15 cm (6") tall x 28 cm (11") long x 23 cm (9")
- Rear dimensions: 10 cm (4") tall x 18 cm (7") wide

WARNING: Friction between the bag and the gas tank can cause paint scuffing. It is recommended to keep both the bag and tank clean from debris to minimize risk of damage.

PART #
3515-0188

DESCRIPTION
EXFIL-11 tank bag



EXFIL-2 MINI TANK BAG

- Compact size preserves your bike's aesthetic but has enough room to hold all the essentials
- UV-treated 1680D denier ballistic nylon exterior
- High-powered magnets attach the bag securely to metal tanks
- Lid features fleece-lined phone slot with touch-friendly clear panel for smart phone operation
- Hi-vis orange nylon interior makes spotting contents easier
- Hidden seam in front for routing charging cables
- Attached carrying handle for easy portage
- Main compartment holds two 355 ml (12 ounce) cans
- Front dimensions: 20,3 cm (8") long x 14 cm (5.5") wide x 10,2 cm (4") tall
- Rear dimensions: 11.43 cm (4.5") wide x 5 cm (2") tall

WARNING: Friction between the bag and the gas tank can cause paint scuffing. It is recommended to keep both the bag and tank clean from debris to minimize risk of damage.



EXFIL-0 2.0 TOOL ROLL

- Built to hold all the on-the-road essentials and still fit into Biltwell's Exfil-7 bag (Black PART #3516-0195 and Green PART #3516-0217; sold separately)
- Zippered pouch holds small loose stuff that most tool rolls don't accommodate
- Includes seven deep elastic socket holders and five angled wrench pockets
- Pockets engineered from more durable rip-stop fabric
- Two wider slots for pliers/wire cutters
- Bundles together with expandable G-hook-and-loop closure system
- Made from 600D abrasion-resistant polyester outer shell with high-viz orange interior lining
- Dimensions: 23,5 cm W x 18 cm tall when folded (9 1/4" x 7"); 47 cm W (18 1/2") when opened flat

NOTE: Tools not included.



PART #
3502-0582

DESCRIPTION
EXFIL-2 mini tank bag

PART #
3510-0179

DESCRIPTION
EXFIL-0 2.0 tool roll



EXFIL SISSY BARS

- TIG-welded construction
- 16 mm (5/8") O.D. stock steel rod for maximum strength and durability
- 5 mm-thick, CNC-cut and hand-deburred side plates
- Includes Allen cap hardware for easy mounting



1501-0741

1501-0739



0632-0626

WHISKEY THROTTLE ASSEMBLIES

- Cast aluminum clamshell and throttle tube
- Include chrome-plated steel cable ferrules and plated Allen cap clamshell mounting hardware
- Available in two styles: single cable for custom applications or dual cable for retrofitment on OEM push/pull throttle cable assemblies
- Cable ferrules included with both styles are designed to fit stock Harley-Davidson® thread-in and clip-in cables
- Throttle grip tube is machined to accept rubber motorcycle grips



0632-0629

| PART # | DESCRIPTION |
|--------------------------|-------------|
| FOR 18-23 SOFTAIL | |
| 1501-0741 | Black |
| 1501-0742 | Chrome |
| FOR 06-17 DYNA | |
| 1501-0735 | Black |
| 1501-0736 | Chrome |

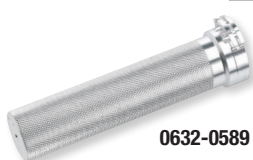
| PART # | DESCRIPTION |
|--|-------------|
| FOR 04-22 XL (EXCEPT RH SPORTSTER MODELS) | |
| 1501-0737 | Black |
| 1501-0738 | Chrome |
| FOR 96-03 XL | |
| 1501-0739 | Black |
| 1501-0740 | Chrome |

| PART # | DESCRIPTION |
|-----------------------|-------------|
| SINGLE CABLE | |
| 25,4 MM (1") | |
| 0632-0626 | Polished |
| 0632-0627 | Black |
| 22,2 MM (7/8") | |
| 0632-0692 | Polished |
| 0632-0691 | Black |

| PART # | DESCRIPTION |
|-------------------|-------------|
| DUAL CABLE | |
| 25,4 MM (1") | |
| 0632-0628 | Polished |
| 0632-0629 | Black |

WHISKEY THROTTLE SLEEVES

- CNC-machined 6061-T6 aluminum
- Allows owners to replace the thick, generally uncomfortable stock molded one-piece grips with soft aftermarket grips
- The CNC-machined cable channel has barrel openings for two cables



0632-0589



0632-0700

| PART # | DESCRIPTION |
|-----------|-------------|
| 0632-0589 | Polished |

| PART # | DESCRIPTION |
|-----------|-------------|
| 0632-0700 | Black |



0630-2324



0630-2325



0630-2326



0630-2327



0630-2328



0630-2320



0630-2323

ALUMICORE GRIP SETS

- Fit 25,4 mm (1") handlebars
- Forged and CNC-machined from 6061-T6 aluminum
- Rubber sleeve is constructed from thermoplastic vulcanizate (TPV) for optimal traction and comfort
- TPV is highly UV-resistant and durable while maintaining a soft feel
- Available for both dual-cable and Throttle-By-Wire applications
- Machined alloy end caps are removable to make replacing rubber grip sleeves fast and easy
- Rubber grip tube replacement sets available in black, white, oxblood, chocolate and gray colors

| PART # | DESCRIPTION |
|-----------------------------------|-------------|
| REPLACEMENT SLEEVES (PAIR) | |
| 0630-2324 | Black |
| 0630-2325 | White |
| 0630-2326 | Oxblood |
| 0630-2327 | Chocolate |
| 0630-2328 | Gray |

| PART # | DESCRIPTION |
|----------------------------------|-------------|
| DUAL-CABLE GRIP SET | |
| 0630-2320 | Black |
| THROTTLE-BY-WIRE GRIP SET | |
| 0630-2322 | Black |
| 0630-2323 | Chrome |



0802-1490



0802-1491



0802-1492



0802-1493

PREDATOR III SEATS

- Features a 18 cm (7") tall driver support with unique styling
- High-quality automotive-grade vinyl cover
- Molded polyurethane foam for maximum comfort and styling
- Seat is made narrow up front for better leg clearance
- 5 mm (3/16") ABS thermoformed seat base for a perfect fit, with a carpeted bottom and rubber bumpers to protect paint
- Fits with all Drag and most H-D sissy bars
- Includes all mounting hardware

| PART # | DESCRIPTION |
|--|-------------------------------|
| FOR 18-21 FL5B, 18-23 FXLR/FXLRS/FXLRST; 72 CM L OVERALL (32 CM W FRONT) X (16 CM W REAR) (281/4" L OVERALL (121/2" W FRONT) X (61/4" W REAR)) | |
| 0802-1490 | Smooth |
| 0802-1491 | Double diamond, black thread |
| 0802-1492 | Double diamond, red thread |
| 0802-1493 | Double diamond, silver thread |



0802-1516



0802-1517



0802-1518



0802-1519

PREDATOR SEATS

- High-quality automotive grade vinyl
- Molded polyurethane foam for maximum comfort and styling
- 5 mm (3/16") ABS thermoformed seat base for a perfect fit, with a carpeted bottom and rubber bumpers to protect paint
- Fits with all Drag and most H-D sissy bars
- Includes all mounting hardware

| PART # | DESCRIPTION |
|--|-------------------------------|
| FOR 18-21 FL5B, 18-23 FXLR/FXLRS/FXLRST; 72,5 CM L OVERALL (32 CM W FRONT) (281/2" L OVERALL (121/2" W FRONT)) | |
| 0802-1516 | Smooth |
| 0802-1517 | Double diamond, black thread |
| 0802-1518 | Double diamond, silver thread |
| 0802-1519 | Double diamond, red thread |



0802-1512



0802-1513



0802-1514



0802-1515

SOLO SEATS

- High-quality automotive grade vinyl
- Molded polyurethane foam for maximum comfort and styling
- 5 mm (3/16") ABS thermoformed seat base for a perfect fit, with a carpeted bottom and rubber bumpers to protect paint
- Uses stock fender mount holes
- Includes all mounting hardware

| PART # | DESCRIPTION |
|---|------------------------------|
| FOR 18-21 FLSB, 18-23 FXLR/FXLRS/FXLRST MODELS; 28 1/2" L OVERALL (12 1/2" W FRONT) | |
| 0802-1512 | Smooth |
| 0802-1513 | Double diamond, black thread |

| PART # | DESCRIPTION |
|--|-------------------------------|
| FOR 18-21 FLSB, 18-23 FXLR/FXLRS/FXLRST MODELS; 28 1/2" L OVERALL (12 1/2" W FRONT) (CONT) | |
| 0802-1514 | Double diamond, silver thread |
| 0802-1515 | Double diamond, red thread |



0404-0672

OEM-STYLE FORK TUBES

- Highly durable hard chrome finish
- Offer less drag and improved seal wear
- Accept all OEM components
- Sold in pairs

| PART # | LENGTH |
|----------------------------------|---------------------------------------|
| FOR 09-12 FLHTCUTG, 10-11 FLHXXX | |
| 0404-0672 | 571 mm (22,5"); repl. OEM #83804-09 |
| 0404-0673 | 622 mm (24,5"); repl. OEM #83804-09+2 |

¹ Approx. +7,62 mm (+0,300") over stock length.

² Not for Dresser models with cartridge forks.

**Paul Yaffe's
Bagger
Nation™**



2330-0310

SHARKNADO® FAIRING HEADLAMP

- An unmissable headlamp designed for Sharknado fairings and unique custom models
- Halo-design LED array is 40% brighter than stock assembly for safer night rides
- Increased visibility in traffic with white running light
- Strong black aluminum housing and durable polycarbonate lens
- Plug-and-play installation with four-pin connector

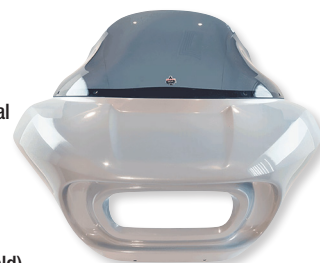


NOTE: Twin Cam and earlier models equipped with Sharknado fairings will require additional electrical components.

| PART # | DESCRIPTION |
|-----------|---|
| 2001-2705 | For 18-23 FXFB/FXFBS and models equipped with Sharknado® fairings |

SHARKNADO® FAIRINGS

- Aggressive styling
- Raw, gelcoat finish ready for paint
- 3-D formed, hand-laid composite material
- Patented Sharknado EZ mount system fits a wide variety of models
- Klock Werks 23 cm (9") Sport Flare™ windshield included
- Measures roughly 73,66 cm (29") W x 35,5 cm (14") T (not including windshield)



2330-0311

NOTE: U.S. Patent No. 90032651

NOTE: Requires installation of Sharknado headlamp PART #2001-2705 (sold separately). Installation of Quad Pod light kit is recommended (PART #s 2020-2180, 2020-2181, and 2020-2182, sold separately)

| PART # | DESCRIPTION |
|-----------|--|
| 2330-0310 | For 00-23 Softail (except 18-23 FXFB/FXFBS), 99-17 FXD/FXDWG and 86-22 XL (except RH Sportster models) |
| 2330-0311 | For 18-23 FXFB/FXFBS models |

CROSSFIRE HEADLIGHT

- Industrial custom look
- Daytime running lights and 6500k super bright white LED lamps for unparalleled visibility
- Quadruple the brightness of the stock assembly
- Reduces power draw by at least 50%
- 50,000+ hour lifespan
- Bolt on install with plug-and-play electrical fitment
- IP67-level dust and water protection
- Corrosion-resistant aluminum housing
- Shatterproof Polycarbonate lens offers exceptional durability
- Vibration resistant



| PART # | DESCRIPTION |
|-----------|------------------------------------|
| 2001-2706 | For 15-23 FLTR (except 23 FLTRXSE) |

SLIMLINE CUSTOM DASH KIT

- Custom, low-profile look
- 3-D molded, hand laid composite material
- Can accept console badges

NOTE: This kit may fit other M-Eight Softail applications with 19L (5 gallon) tanks with modification. Does not fit M-Eight Softail applications with 14,4L (3.8) gallon tanks.



| PART # | DESCRIPTION |
|-----------|------------------------------|
| 2202-0303 | For 22-23 FXLRS/FXLRSR/FXRST |

STEALTH FAIRING SUPPORT BAR

- Replaces the exposed fairing support with an undercover solution
- Ready for cleaner, aftermarket turn signals
- Black powder coated finish



| PART # | DESCRIPTION |
|-----------|------------------------|
| 2350-0564 | For 22-23 FXLRST/FXRST |



THUNDER BOLT TAILLIGHTS

- Radical custom, flush-mounted look
- Rugged 6061-T6 billet aluminum bodies with black anodized finish
- Switchback technology allows for multi-function as running light, brake light, and/or turn signals
- Can be mounted anywhere you can drill a 16mm (0,625") hole
- Self contained unit with built-in load equalizer
- Waterproof
- Sold in pairs

| PART # | DESCRIPTION |
|-----------|-------------------------|
| 2020-2166 | Thunder Bolt taillights |

THUNDER-POD TAILLIGHT KIT

- Kit includes three sets of Thunder Bolt taillights (6 lights total) and two mounting plates
- Switchback technology allows lights to function as red running/brake lights as well as amber turn indicators
- Encased in CNC machined, billet aluminum "pods" for a clean, custom feel
- Built to install easily on any flat surface
- Built in load equalizer
- Black finish
- Measures 9,5 cm (3³/₄") x 3,175 mm (1¹/₄")

| PART # | DESCRIPTION |
|-----------|---------------------------|
| 2010-1516 | Thunder-Pod taillight kit |



TRACERS LED TURN SIGNAL BEZELS

- Replaces OEM headlight trim
- "Switchback" technology allows dual function as white running lights and amber turn signals
- Triple the brightness of stock lights
- Reduces power draw by at least 50%
- 50,000+ hour lifespan
- Bolt on install with plug-and-play electrical fitment
- IP67-level dust and water protection
- Corrosion-resistant aluminum housing
- Shatterproof Polycarbonate lens offers exceptional durability
- Vibration resistant



| PART # | DESCRIPTION |
|-----------|---|
| 2020-2169 | For 15-23 FLTRX/FLTRU/FLTRK (except 23 FLTRXSE) |

BAG BOLTS TAILLIGHT KIT

- Red/red LEDs serve dual-function as running and brake lights
- Black housing with integrated load equalizer for a clean custom look
- Customizer's dream, horizontal or vertical mount on any flat surface
- Kit includes two pairs of lights (4 total)

| PART # | DESCRIPTION |
|-----------|--|
| 2020-2167 | For 18-23 Softail with OEM hard saddlebags |

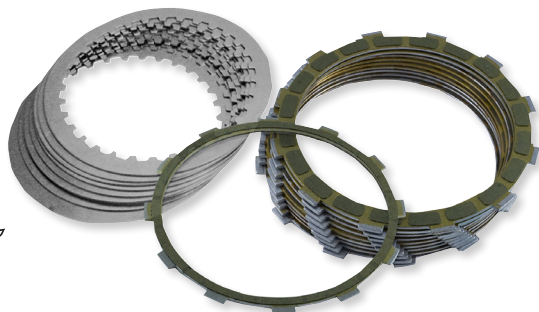
LIGHTNING BULLET LED MARKER LIGHTS

- Innovative styling in a super small package
- Replace bulky factory signals
- Feature laser bright COB technology
- Lightning Bullets function as white daytime running lights and amber turn signals
- Available in gloss black finish
- Easy installation using factory mounting points
- Sold in pairs

NOTE: Lights will not flash when security system is triggered.



| PART # | DESCRIPTION |
|-----------|---------------------------|
| 2020-2168 | For 15-23 FLHX/FLTCU/FLHR |



EXTRA PLATE CLUTCH KIT

- Adds 11% more surface area to clutch pack
- Carbon fiber plates have high static and dynamic coefficient of friction for smooth, positive engagement and release
- Consists of 10 friction plates and nine steel plates

| PART # | DESCRIPTION |
|------------------|---|
| 1131-3882 | For 99-17 Twin Cam (except models w/ slipper/assist clutch) |



CUSTOM GRIPS

- Feature an ergonomic seamless rubber grip technology
- Billet aluminum end caps and collars
- Available in chrome or black anodized finishes
- Sold in pairs
- Matching pegs sold separately



0630-3109



0630-3105

| PART # | DESCRIPTION |
|--|---|
| FOR 08-20 FLHT/FLHR/FLTR/FLHX, H-D FL TRIKE, 16-20 SOFTTAILS, 20 ELW, 16-17 FXDLS, 13-15 FXSBSE, 14-15 FLSTNSE, 11-12 FLSTSE | |
| 0630-3107 | Contour, diamond contour, chrome anodized |
| 0630-3109 | Spike, diamond contour, black anodized |
| 0630-3112 | Contour, diamond contour, black anodized |



1107-0725



1107-0726

SCORPION SERIES CLEAR DERBY COVERS

- Features a 0,25"-thick, clear polycarbonate window to your clutch
- The scratch- and discoloration-resistant window is firmly secured and sealed with an O-ring gasket
- The outer cover area is CNC-machined from billet aluminum, then given a brilliant chrome or Stealth black-anodized finish
- The derby cover gasket is also included
- For the ultimate in looks and performance, install a Barnett lock-up clutch with your new cover

| PART # | DESCRIPTION |
|-------------------|--------------|
| FOR 18-23 SOFTAIL | |
| 1107-0725 | Clear/chrome |
| 1107-0726 | Clear/black |

KURYAKYN

HEX GRIPS

- Contoured to fit perfectly in your hands for unbeatable comfort
- Ergonomic design features a widened diameter for thumb, index, and middle fingers, and a tapered outer profile for ring and pinky fingers to match the natural shape of your hands
- Premium, durable EPDM rubber compound will not harden, crack or wear over time and provides an ultra soft, cushiony feel for all-day vibration dampening comfort
- Combination of smooth and "hex" shaped embossed rubber provides amazing grip and distinct styling
- Available with satin black aluminum collars and end caps
- Feature bar-mounted end caps that can be easily replaced with bar end mirrors or weights
- Sold in pairs



KURYAKYN

CHROME DRIVER FLOORBOARD RELOCATION BRACKETS

- Reposition the driver floorboards 1" forward and 1" further out than the stock location
- Compatible with Kuryakyn ISO® Boards and H-D Traditional or Swept Wing floorboards
- Not for use with Cruise Arm Mark III or standard length Cruise Arm Mark IV

NOTE: Throttle sleeve not included.

| PART # | DESCRIPTION |
|--|-------------|
| For 99-17 Twin Cam and 86-23 XL models (except 08-17 Dressers, H-D FL Trike, 16-17 Softails, 13-15 FXSBSE, 14-15 FLSTNSE, 11-12 FLSTSE, 16-17 FXDLS, RH Sportsters and models w/ air-assisted forks) | |
| 0630-2549 | |

| PART # | DESCRIPTION |
|---|-------------|
| For 17-23 FLHT (except FLHTKSE), FLHR, FLTR (except 18-23 FLTRXSE), FLHX (except FLHXSE) and H-D Trike models | |
| 1621-0853 | |



1620-2502

MX-STYLE FOOTPEGS

- Billet aluminum is nice for your dad's Bagger, but steel is the real deal and MX-style pegs from Burly are just that
- Inspired by the bear-trap style of the 70's motocross machines
- MX pegs have an adjustable angle that will let you tune them to your liking
- Mini pegs have a more narrow design for a nice, balanced feel
- A serrated edge will keep your feet planted
- Sold in pairs

| PART # | DESCRIPTION |
|-----------|--|
| 1620-2502 | Male mount MX-style footpegs (2,3" wide) |

| PART # | DESCRIPTION |
|-----------|--|
| 1620-2503 | Male mount mini MX-style footpegs (1,76" wide) |



0416-0114

SLAMMER FORK KITS

- Designed to provide a lowered front end and superior ride performance
- Mean, aggressive look and a reduction in front end "dive" during braking, giving you more control and confidence
- High tensile SiCr (Silicon Chrome) Wire
- Progressively wound
- Precision ground
- Kit included components to drop forks either 1" or 2"

| PART # | DESCRIPTION |
|-----------|--|
| 0416-0114 | For 18-23 FLDE, FLFB/S, FLHC/S, FLSL, FXBR/S, FXBB,FXLR, FXST models |
| 0416-0115 | For 18-23 FLSE, FXFB/S, FXLRS/T models |

M-EIGHT SOFTAIL SLAMMER SHOCKS

- Crafted with a high-pressure nitrogen charged damper
- Utilizes a hard chrome precision ground piston rod and features a steel monotube construction with an Internal Floating Piston (IFP) to provide incredible ride performance, even at increased speeds
- 31 cm (12,2") shock length
- Deflective disc valving
- Preload adjustment via threaded preload adjuster with included preload spanner wrench



| PART # | DESCRIPTION |
|-----------|----------------------------------|
| 1310-2325 | For 18-23 M-Eight Softail models |