

## VANCE HINES

### BIG SHOTS STAGGERED 2-INTO-2 EXHAUST SYSTEM

- PCX™ (Power Chamber Exhaust) technology
- Chambered high-flow catalyst cartridge designed to increase torque
- Full coverage heat shields
- CNC-machined billet end caps
- Available in a chrome finish
- Include mounting hardware and installation instructions
- See page 423 of the 2022 Parts Europe FatBook for additional Vance & Hines Big Shots Staggered and Long 2-into-2 Exhaust Systems

**PART #**
**1800-2583**

**DESCRIPTION**

For 00-17 FXS/FXST/FLST models (except 08-11 FXCW/C, 09 FXSTSSE, 13-17 FXSB/FXSE)

### PRO PIPE 2-INTO-1 EXHAUST SYSTEM

- PCX™ (Power Chamber Exhaust) technology
- Chambered high-flow catalyst cartridge designed to increase torque
- Full coverage heat shields
- Available in a matte black finish
- Include mounting hardware and installation instructions
- See page 43 of the 2023 Parts Europe FatBook Update or page 433 of the 2022 Parts Europe FatBook for additional Vance & Hines Pro Pipe 2-into-1 Exhaust Systems

**PART #**
**1800-2576<sup>1</sup>**

**DESCRIPTION**

For 18-22 FLSL/FLHC/FLDE/FXFB/FXLR/FXLRST/FXBB/FLSB/FXST models

<sup>1</sup> FLHC/FLSB require the use of saddlebag support kit, PART #1861-1250 (sold separately).

### POWER DUALS HEADER SYSTEM

- PCX™ (Power Chamber Exhaust) Technology
- Chambered high-flow catalyst cartridge designed to increase torque
- Catalysts repositioned downstream for rider comfort
- Full coverage heat shields
- Accepts 17-22 style mufflers (sold separately)
- Available in a matte black finish
- Mounting hardware and installation instructions included
- See page 390 of the 2022 Parts Europe FatBook for additional Vance & Hines Power Duals Header Systems

**PART #**
**1802-0407<sup>1</sup>**

**DESCRIPTION**

For 17-23 FLHT/FLHTK/FLHX/FLHR/FLTRX/FLTRU/FLTRK models

<sup>1</sup> CVO spacer kit included.



## VO2 STINGRAY AIR INTAKE

- Adds just the right touch to enhance the nostalgia of your timeless push rod V-twin engine
- Improved performance over stock
- Stamped cover featuring the Vance & Hines V-twin logo
- Force velocity stack with maximum flow and ease of installation
- High flow washable air filter
- Include backing plate, venturi and breather assemblies
- Include mounting hardware and installation instructions
- See page 73 of the 2023 Parts Europe FatBook Update catalog for additional Vance & Hines VO2 Stingray Air Intakes

**NOTE:** CV0/114"/117" models and models with SE stage 1 air cleaners will require support bracket H-D part #16400049 to install.



PART #	DESCRIPTION
1010-2982	For 91-22 XL models (except 21-22 Sportster S/RH1250S and 22 Nightster/RH975)

## VO2 AMERICA AIR INTAKE

- Crowned with a bold CNC-machined billet aluminum cover adorned with the stars & stripes and bolted down with ARP hardware
- Improved performance over stock
- Stamped cover featuring the Vance & Hines V-twin logo
- Force velocity stack with maximum flow and ease of installation
- High flow washable air filter
- Include backing plate, venturi and breather assemblies
- Include mounting hardware and installation instructions
- See page 74 of the 2023 Parts Europe FatBook Update for additional Vance & Hines VO2 America Air Intakes

**NOTE:** CV0/114"/117" models and models with SE stage 1 air cleaners will require support bracket H-D part #16400049 to install.



PART #	DESCRIPTION
1010-2991	For 08-16 FLHT/FLHR/FLHX/FLTR/H-D FL Trikes, 16-17 FXDLS, 16-17 Softails, 14-15 FLSTNSE, 13-14 FXSBSE, 11-12 FLSTSE models

## VO2 FALCON AIR INTAKES

- Sleek forward-facing 90° intake design
- Race-proven intake tube available in chrome, matte black, forged carbon fiber and weaved carbon fiber
- CNC-machined billet aluminum backing plate, breather stand-offs and flange cover
- Integrated breather assembly using 12-point stainless Banjo bolts
- Washable high-flow oiled-media air filter with stamped V&H logo
- Matched induction module cover on throttle-by-wire models
- Accessory pre-filter rain sock available
- Mounting hardware and instructions included



1010-2942



1010-2953

PART #	DESCRIPTION	PART #	DESCRIPTION
FOR 17-23 FLHT/FLHR/FLHX/FLTRX/FLTRU/H-D FL TRIKES		FOR 99-07 FLHT/FLHR/FLHX/FLTR (EXCEPT 99-01 TOURING FUEL INJECTION AND MODELS W/ LOWER FAIRINGS), 00-15 SOFTTAILS (EXCEPT 11-15 CVO MODELS), 99-17 DYNA (EXCEPT 16-17 FXDLS)	
1010-2942	Matte black	1010-2952	Forged carbon fiber
1010-2950	Forged carbon fiber	1010-2956	Weaved carbon fiber
1010-2954	Weaved carbon fiber	FOR 18-22 SOFTTAILS	
FOR 08-16 FLHT/FLHR/FLHX/FLTR/H-D FL TRIKES, 16-17 FXDLS, 16-17 SOFTTAILS, 14-15 FLSTNSE, 13-14 FXSBSE, 11-12 FLSTSE		1010-2942	Matte black
1010-2951	Forged carbon fiber	1010-2950	Forged carbon fiber
1010-2955	Weaved carbon fiber	1010-2954	Weaved carbon fiber
		FOR 91-22 XL (EXCEPT 21-22 SPORTSTER S/RH1250S AND 22 NIGHTSTER/RH975)	
		1010-2953	Forged carbon fiber
		1010-2957	Weaved carbon fiber





1801-1767



1801-1768

## GNX 4,5" SLIP-ON MUFFLERS

- Muffler bodies measure a full 4,5" OD
- Premium fit, finish, sound and power
- Unique louvered baffle delivers a more aggressive tone, even with stock head pipes
- S&S racing heritage-styled end caps with a black tuxedo finish
- SAE J2825 Sound Level Complaint (with included dB reducer installed); dB reducer is removable
- Relieved for shocks up to 35,25 cm (13 1/2") in length
- Sold in pairs

FOR 99-16 FLHT/FLTR/FLHR/FLHX MODELS AND H-D FL TRIKES (EXCEPT 15-16 FLRT)

PART #	DESCRIPTION	PART #	DESCRIPTION
1801-1767	Guardian black w/ tuxedo black end caps	1801-1768	Chrome w/ tuxedo black end caps

## GRAND NATIONAL MUFFLER 4" END CAP

- Stainless steel construction
- Black powdercoat finish
- Fits 4" Grand National mufflers
- Sold each



PART #	DESCRIPTION
1860-2366	Grand National 4" black end cap (ea.)



1801-1764



1801-1766

## BROADHEAD/FISHTAIL 4" SLIP-ON MUFFLERS

- Sleek look and classic style
- Slash-cut or fishtail style end caps available
- Removable dB reducer is J2825 compliant
- Sold in pairs

FOR 14-22 CHIEFTAIN, 16-22 CHIEFTAIN DARK HORSE, 17-22 CHIEFTAIN ELITE/LIMITED, 18-20 CHIEFTAIN CLASSIC, 20-22 CHALLENGER/CHALLENGER LIMITED/DARK HORSE

PART #	DESCRIPTION	PART #	DESCRIPTION
<b>SLASH-CUT BROADHEAD</b>		<b>FISHTAIL</b>	
1801-1764	Black	1801-1766	Chrome
1801-1765	Chrome		



## 2-INTO-2 FUSION LONG ADJUSTABLE SOUND SLIP-ON MUFFLERS

- Don't just ride a motorcycle, live it!
- Unique sound system provides biker with a unique sound experience
- Valve positioned at the end of the muffler allows rider to adjust exhaust sounds
- Switch between different sound modes from off, medium and on
- Off mode is quieter than stock exhaust
- Electronics ensure that exhaust sound complies with applicable laws
- Two sound modes: ESE for out of town, and ESM for in town
- Comes in a chrome finish with a tapered end
- Sold in pairs



PART #	DESCRIPTION
1801-1769	For 21-23 FLHC/FLHCS



## 2-INTO-2 FUSION SHORT ADJUSTABLE SOUND SLIP-ON MUFFLERS

- Don't just ride a motorcycle, live it!
- Unique sound system provides biker with a unique sound experience
- Valve positioned at the end of the muffler allows rider to adjust exhaust sounds
- Switch between different sound modes from off, medium and on
- Off mode is quieter than stock exhaust
- Electronics ensure that exhaust sound complies with applicable laws
- Two sound modes: ESE for out of town, and ESM for in town
- Comes in a chrome finish with a tapered end
- Sold in pairs



PART #	FITS MODEL
1801-1770	For 21-23 FLHC/FLHCS



## PASSENGER FOOTREST RELOCATION KITS

- Moves the mounting point to allow you to use OEM passenger footrests after installation of Kesstech exhausts
- Footrest not included

PART #	FITS MODEL
1620-2474	For 18-23 Softtail models
1620-2475	For 07-17 Softtail models
1620-2473	For 07-17 Dyna models



## ANTENNAS

- AM/FM stubby antennas
- Comes in rubber or aluminum with carbon fiber insert
- Fits any HD models with existing audio antenna
- 100% plug-n-play

DESCRIPTION	PART #
Rubber	4401-0274
Aluminum with carbon insert	4401-0275





## EXFIL-65 BAG GEN 2

- Roll-top closure with reinforced nylon quick-release buckles
- UV-treated 500D sides and 1000D bottom are PVC-coated and waterproof
- Woven reflective thread enhances nighttime visibility
- Ballistic-grade 5 cm (2") nylon loops and box-stitched handles on sides
- Eleven rows of MOLLE webbing allows for modular customization and secondary gear attachment
- FVT valve allows air out of the back for maximum compression
- Universal fitment
- Can hold up to 65 355 ml (12 US fluid ounce) cans
- Closed dimensions: 56 cm H x 30,5 cm W (22" x 12")

### PART #

3516-0403

### DESCRIPTION

Exfil-65 bag

## EXFIL-80 BAG GEN 2

- Roll-top closure with hook-and-loop material and side release buckles
- PVC-backed for increased water resistance
- UV-treated 1680 ballistic polyester
- High-viz orange interior liner
- Three removable, 38 mm (1,5") mounting straps with reflective stitching
- Hook-and-loop material-mounted, removable tool pouch
- Tool compartment holds nine deep sockets and seven combination wrenches and also includes mesh pocket and flat document pocket (tools not included)
- Waterproof sleeve in zippered compartment at base of bag
- Four rows of MOLLE webbing for modular customization
- SBS zippers synthetic zippers with knotted and silenced cord pulls
- Shoulder strap included
- Holds up to eighty 355 ml (12 US fl. oz.) cans
- Contents not included
- Overall dimensions when full and closed:  
51 cm H x 35,5 cm W x 30,5 cm D (20" x 14" x 12")



### PART #

3515-0238

### DESCRIPTION

Exfil-80 bag



## EXFIL-60 BAG GEN 2

- Roll-top closure with reinforced nylon quick-release buckles
- UV-treated 1680D ballistic polyester nylon construction
- PVC treatment on exterior panels increases weather resistance
- High-viz orange interior liner
- Five removable 38 mm (1,5") wide mounting straps with reflective stitching provide multiple mounting options and added security
- Convenient pouch behind the front flap keeps items secure but within easy reach
- Outer and inner zippered pockets on front flap for extra storage
- Includes weather-resistant cover that can be stored in zippered pocket on the bottom of the bag
- Three rows of MOLLE webbing allow for modular customization and secondary gear attachment
- Rugged SBS synthetic zippers with knotted nylon cords
- 45 liter storage volume capacity
- Overall dimensions (when full and closed):  
35,5 cm W x 30,5 cm D x 50 cm T (14" x 12" x 20")

### PART #

3516-0402

### DESCRIPTION

Exfil-60 bag



## EXFIL-0 TOOL ROLL

- Highly abrasion-resistant 600 denier polyester nylon outer shell
- Heavy-duty hi-vis orange nylon interior
- Five sleeves for wrenches
- Adjustable G-hook nylon strap closure
- Internal zippered pouch for small items
- Two enclosed translucent rip-stop compartments and one large "junk drawer" pocket
- Dimensions: 23,5 cm W x 18 cm tall when folded (9 1/4" x 7"); 47 cm W (18 1/2") when opened flat

### PART #

3510-0179

### DESCRIPTION

Exfil-0 tool roll



## ION TANK RING

- Allows mounting of ION tank bags
- Convenient quick-lock mechanism allows the tank bag to be mounted or removed in seconds
- Bike-specific design provides complete stability and optimal fit
- Simple installation
- Constructed from fiberglass-reinforced polyamide
- Mounting hardware included

PART #	FITS MODEL
0510-0640	For 21-23 Sportster S/RH1250S



## SLC LEFT SIDE CARRIER

- Precisely developed allows for simple and secure mounting on the bike's original attachment points
- Quick-release mounting system allows side bags to be easily attached or removed
- Provides secure hold for side bags, side cases, adapter plates and universal side bracket number plates
- Available for both the left side of the motorcycle
- Includes mounting hardware

PART #	DESCRIPTION
1510-1123	For 21-23 Sportster S/RH1250S



## PRO TANK RING

- Allows mounting of PRO tank bag
- Convenient quick-lock mechanism allows the tank bag to be mounted or removed in seconds
- Bike-specific design provides complete stability and optimal fit
- Magnetic guide aid for easy attachment
- Simple installation
- Constructed from fiberglass-reinforced polyamide
- Mounting hardware included

PART #	DESCRIPTION
0510-0642	For 21-22 Sportster S/RH1250S



## DIAPHRAGM REBUILD KIT

- Rebuild kit for the diaphragm
- Includes diaphragm, spring and O-ring

PART #	DESCRIPTION
1003-2029	For all 86-06 CV and butterfly-style Keihin carbs



## CYLINDER HEAD BREATHERS

- Machined from billet 6061 aluminum with square surfaces, promoting excellent umbrella valve sealing, longer main breather exit nipples with dual O-rings to promote better breather system sealing
- Properly sized breather inlets and location for optimum engine breathing
- Unique design maximizes breather volume and allows for easy serviceability
- Breather bodies have multiple drain ports located on the inside floor, ports are chamfered on ID to allow easy drainage yet squared off on exits to deter filling from splash oil
- Anodized Feuling red finish
- Include billet breather housings, billet covers, breather filter elements, umbrella valves and quality hardware (rocker cover gaskets are not included and must be purchased separately)
- Feuling breathers work, seal and you will find they hold an engine vacuum
- Sold in pairs

**NOTE:** Testing on a healthy engine with no external venting (sealed dipstick and transmission top cover) will see 89 ml - 118 ml (3 US fl oz. - 4 US fl oz.) of oil in the sump and once dipstick is removed another 89 ml - 118 ml (3 US fl oz. - 4 US fl oz.) will drain.



PART #	DESCRIPTION
0930-0239	For 17-22 M-Eight

## ANDREWS

### CAMS FOR 17-23 M-EIGHT

#### 465B

- Bolt-in chain drive cam for 107"-117" engines
- Available with stock valve springs
- For heavy and middle weight bikes
- Great low to mid rpm torque (1200-5600 rpm)

#### 485

- Highest lift bolt-in chain drive cam available with stock valve springs
- Bolt-in cam for 107" engines and larger
- Excellent low to mid rpm power (1500-5600+ rpm)

GRIND	OPEN	CLOSE	DURATION @ .050"	VALVE LIFT	LIFT TDC	LOBE CENTERLINE
<b>465B</b>						
Intake	10°	20°	210°	0,464"	0,126"	95°
Exhaust	46°	10°	236°	0,460"	0,122"	108°
<b>485</b>						
Intake	7,5°	29,5°	217°	0,485"	0,116"	101°
Exhaust	52,5°	14,5°	247°	0,485"	0,145"	109°

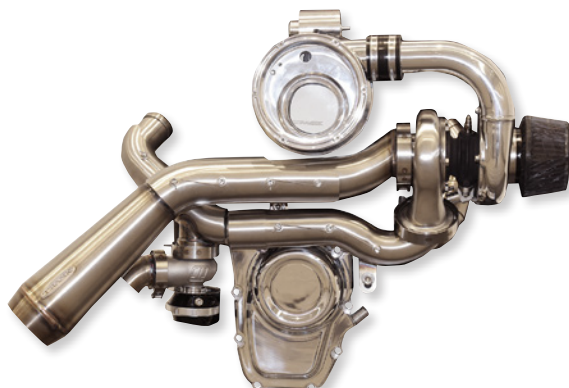


0925-1509

PART #	DESCRIPTION
0925-1509	465B
PART #	DESCRIPTION
0925-1510	485



TRASK



### TORNADO TURBO KIT

- Bolt on 40-50% more power to your stock 107", 114" or 117" M-Eight motors
- Trask compressor and turbine housings with Garrett internals
- Stainless steel pipe kit is mandrel bent and TIG welded; includes wastegate
- Polished brushed stainless exhaust with race-inspired stainless steel heat shields



- Trask plenum with integrated blow-off valve
- Includes all install components: larger injectors, spark plugs, boost gauge with mount, oil feed, drain lines, custom cam cover, Thundermax tune files and all necessary hardware and gaskets

**NOTE: Requires use of Thundermax ECM PART #s 1020-2664 or 1020-2795 (sold separately).**

**NOTE: Does not fit on Twin Cooled models or models with fairing lowers.**

**NOTE: Intended for offroad use only, and recommended for experienced riders.**

PART #	DESCRIPTION
0904-0098	For 17-23 FLHT/FLHX/FLHR/FLTR and 18-23 Softail models



### GAUGE MOUNTS

- Fits all Heinz Bikes risers
- Easy and quick mounting
- CNC-manufactured housings made of high-quality billet aluminum
- Comes in black powdercoated or silver anodized



2210-0652



2210-0653

FOR 18-20 FXBB, 20-23 FXBBS, 18-20 FXLR, 20-23 FXLRS, 22-23 FXLST, 20-23 FXST MODELS

PART #	DESCRIPTION	PART #	DESCRIPTION
2210-0652	Black	2210-0653	Silver





## ST TURN SIGNALS

- Smaller size that is unobtrusive at original mounting points
- Offers extremely bright and laser-like luminosity
- Mount to bracket of original turn signal without the need for adapter plates
- CNC-manufactured housings made of high-quality billet aluminum
- Connected to 12V, no resistor needed
- Flash frequency of the LED turn signals is regulated automatically by the Can Bus system
- Options include classic, nano or micro blinkers
- Sold in pairs

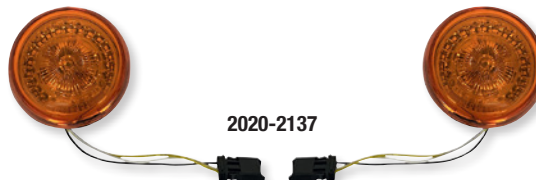


FOR 22-23 FXLRST (ALL MODELS)

PART #	DESCRIPTION	PART #	DESCRIPTION	PART #	DESCRIPTION
<b>CLASSIC WITH MAXIMUM INDICATOR WIDTH 56MM</b>		<b>MICRO WITH MAXIMUM INDICATOR WIDTH 38MM</b>		<b>NANO WITH MAXIMUM INDICATOR WIDTH 24MM</b>	
2020-2152	Black housing w/ yellow LED	2020-2154	Black housing w/ yellow LED	2020-2155	Black housing w/ yellow LED
2020-2153	Black housing w/ yellow/white LED			2020-2156	Black housing w/ white LED

## PROBEAM® FRONT HALO TURN SIGNAL

- Amber bullet lenses
- 24 running light halo LEDs
- 12 center turn signal LEDs
- 1157 bulb base
- Plug and play installation
- Sold in pairs



PART #	DESCRIPTION
2020-2136	For US models w/ 1157 bases and OEM bullet-style lenses, except 16-23 CVO models
2020-2137	For 16-22 FLHXSE, FLHTKSE, 20-22 FLHTCUTGSE, 16 FLTRUSE, 18-22 FLTRXSE, 22-23 FLTRKSE, 16-17 FXSE models w/ JAE bases



## PROBEAM® LOW PROFILE LED TAILLIGHTS WITH BOTTOM WINDOW

- Provides increased side visibility with five light pipes that function as running lights
- 25 separate LEDs act as full-contrast brake lights
- Low-profile design protrudes only 51 mm (2") from the stock taillight baseplate
- Available with red or smoke lens
- Completely sealed unit
- Plug-and-play
- ECE approved

PART #	DESCRIPTION
<b>FOR 09 FLTRSE3, 10 FLHXSE, 12 FLTRXSE, 13 FLHRSE5/FLTRXSE2</b>	
2010-1501	Red lens
2010-1502	Smoke lens



## FRONT BRAKE CALIPER MOUNTS FOR PROBEAM® FOG LIGHTS

- Billet aluminum construction
- Brackets attach to front brake caliper mount
- Fully adjustable design with 10 mm x 1,5 lamp mount stud
- Compatible with ProBEAM® fog lamps (sold separately)
- Mounting hardware included
- Sold in pairs

PART #	DESCRIPTION
<b>FOR 00-23 FLHT/FLHR/FLTR/FLHX, 09-23 H-D FL TRIKES W/ DUAL FRONT BRAKE CALIPERS</b>	
2040-3023	Black
2040-3024	Chrome



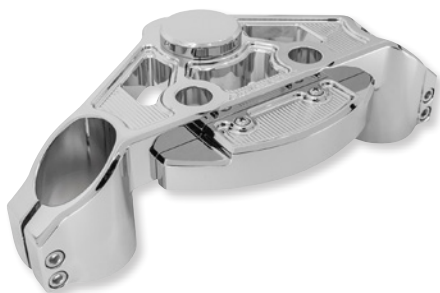


## METHOD TREE IGNITION SWITCH COVER

- Cover for 15-up Road Glide when converting to custom handlebar riser assembly
- Innovative cover eliminates the need to relocate factory ignition switch when going to a custom handlebar riser assembly
- Works perfectly with Method Kickback riser assembly or many other aftermarket riser assemblies
- Does not work without removing the plastic nacelle on 15-up Road Glide applications
- Chrome finish



PART #	DESCRIPTION
<b>2106-0590</b>	For 15-23 FLTRX/FLTRU/FLTRK



## METHOD +2 DROP TOP TRIPLE TREES

- Triple trees CNC-machined from billet aluminum featuring a drop design
- Drop tree design adds extra height to the front end (+2") while keeping proper geometry for optimum handling
- Method trees allow you to add aftermarket risers or T-bar handlebars to Road Glide models
- Innovative ignition switch cover design allows you to decide whether to keep the factory ignition switch location or relocate for a full custom look
- Method billet ignition switch cover PART #2106-0590 is recommended (sold separately) when keeping factory ignition switch location for a finished look and factory fork lock function
- Chrome finish

PART #	DESCRIPTION
<b>0408-0441</b>	For 15-23 FLTRX/FLTRU/FLTRK

## METHOD TRIPLE TREE KIT

- Complete triple tree kit CNC-machined from billet aluminum with a chrome finish
- Allows the installation of Arlen Ness Method or other aftermarket risers to Road Glide models
- Direct bolt-on design, does not require you to relocate your factory ignition switch assembly or remove factory fork lock when Method Ignition Switch cover is added
- Top tree design also allows relocation of factory ignition switch assembly for riders who want a custom look
- Accepts factory or aftermarket handlebar risers or bushings
- Accepts OEM upper stem assembly and bearings
- Includes lower fork stem

**NOTE:** This kit utilizes the stock upper stem assembly.

## METHOD +2" DROP TRIPLE TREE KIT

- Complete triple tree kit CNC-machined from billet aluminum featuring a drop design
- Drop tree design adds extra height to the front end (+2") while keeping proper geometry for optimum handling
- Method design allows you to add aftermarket risers or T-bar handlebars to Road Glide models
- Features a direct bolt-on design that does not require you to relocate your factory ignition switch assembly or remove factory fork lock when installing custom risers
- Integrated ignition switch cover design allows you to decide whether to keep factory ignition location or relocate it for a full custom look (Method Ignition Switch Cover PART #2106-0554; sold separately)
- Each kit includes top tree, lower tree, stem and billet fork nut covers
- Chrome finish

PART #	DESCRIPTION
<b>0408-0443</b>	For 15-23 FLTRX/FLTRU/FLTRK



## METHOD TOP TRIPLE TREE

- CNC-machined from 6061 billet aluminum
- Lightweight design features Method styling and cut through windows
- Direct bolt-on fitment accepts all factory front end components
- Complements Ness Method Riser and Ignition kits for Road Glides for a full custom front end look with factory function
- Chrome finish

PART #	DESCRIPTION
<b>0408-0442</b>	For 15-23 FLTRX/FLTRU/FLTRK



PART #	DESCRIPTION
<b>0408-0444</b>	For 15-23 FLTRX/FLTRU/FLTRK



1610-0682



1610-0683



1610-0681

## T-REX SHORTY BRAKE ARMS

- CNC machined billet aluminum construction
- Measure 16 cm (6,25"), compared to OEM length of 22 cm (8,8")
- Allows driver to keep feet in a more aggressive stationary position while braking
- Coordinating brake pegs are sold separately (see page ???)

PART #	DESCRIPTION
FOR 14-23 FLHT/FLHR/FLHX/FLTRX/FLTRU/FLTRK AND FLHTCUTG/FLRT	
1610-0682	Chrome
1610-0683	Black
1610-0684	Gold

PART #	DESCRIPTION
FOR 08-13 FLHR/FLHR/FLHX/FLTR AND H-D FL TRIKE	
1610-0679	Chrome
1610-0680	Black
1610-0681	Gold



1602-1495



1602-1496



1602-1497

## T-REX SHORTY SHIFT ARMS

- CNC-machined billet aluminum construction
- Measure 127 mm (5"), 32 mm (1,25") shorter than stock
- Allows driver to keep feet in a more aggressive stationary position while braking
- Include spacer when heel shifter is removed
- Coordinating shifter pegs are available separately (see page ???)

PART #	DESCRIPTION	PART #	DESCRIPTION	PART #	DESCRIPTION
FOR 84-23 FLHT/FLHR/FLHX/FLTR AND H-D FL TRIKE, 86-99 FXST/FLST AND 93-98 FXDWG MODELS					
1602-1495	Chrome	1602-1496	Black	1602-1497	Gold



1601-0571



1601-0572



1601-0573

## INNER SHIFT LINKAGE ARMS

- CNC-machined billet aluminum construction
- Sold each

PART #	DESCRIPTION	PART #	DESCRIPTION	PART #	DESCRIPTION
FOR 84-23 FLHT/FLHR/FLHX/FLTR AND H-D FL TRIKE, 86-99 FXST/FLST AND 93-98 FXDWG MODELS					
1601-0571	Chrome	1601-0572	Black	1601-0573	Gold



## PASSENGER FOOTPEG CLEVIS

- Necessary adapter to install Pro One BMX or Moto footpegs on M8 Softail models
- Sold in pairs



PART #	DESCRIPTION
<a href="#">1620-2472</a>	For 18-23 Softails



## BRAKE PEGS

- CNC-machined from billet aluminum
- Measure 76 mm (3") long x 38 mm (1,5") wide
- Include replacement mounting bolt, 5/16-24 thread
- Made to fit directly with Pro-One's T-Rex shorty brake arms (see page ???)



PART #	DESCRIPTION	PART #	DESCRIPTION	PART #	DESCRIPTION
<a href="#">1610-0676</a>	Chrome	<a href="#">1610-0677</a>	Black	<a href="#">1610-0678</a>	Gold



## SHIFTER PEGS

- CNC billet 6061 aluminum
- Measure 44 mm (1,75") long x 25,4 mm (1") wide
- Include replacement mounting bolt, 5/16-24 thread, 25,4 mm (1") length
- Made to fit directly with Pro One T-Res Shorty Shift Arms (see page ???)



PART #	DESCRIPTION	PART #	DESCRIPTION	PART #	DESCRIPTION
<a href="#">1603-0388</a>	Chrome	<a href="#">1603-0389</a>	Black	<a href="#">1603-0390</a>	Gold



## HEADLIGHT MASKS

- Provides an aggressive, narrower look
- The original headlight remains (or can be replaced with an LED variant with an identical attachment) and will continue to be used in conjunction with the kit
- Kit includes a high-quality ABS plastic mask and a CNC-lasered mask holder that ensures a perfect fit
- The speedometer remains in the original position and no changes to the original cables are necessary
- All the holes needed to attach the mask are already there; kit is mounted on the original breakpoints and thus ensures a firm and secure hold
- The headlight can be adjusted, just like the original, in order to be able to optimally adjust the headlight range (the mask is also adjusted!)
- Available in black



PART #	DESCRIPTION
<a href="#">2001-2681</a>	For 22-23 Nightster/RH 975/23 Nightster S/RH975S
<a href="#">2001-2682</a>	For 22-23 Nightster/RH 975/23 Nightster S/RH975S





## UPPER FORK COVERS

- Two-piece fork cover kit covers the upper fork tubes between the fork bridges so the entire fork appears bulkier and completely black.
- The covers are attached using hidden setscrews and thus center themselves on the fork tubes to ensure that they are held securely
- To ensure that the gaps between the covers and the triple clamps are exactly parallel, the covers have been provided with the same bevels as the triple clamps
- Covers are made of high-quality aluminum and are milled on the most modern 5-axis machining centers and then powdercoated in glossy black
- All parts needed for assembly are included in the kit



0411-0253



0411-0254

PART #	DESCRIPTION
0411-0253	For 22-23 Nightster/RH 975/23 Nightster S/RH975S models

PART #	DESCRIPTION
0411-0254	For 22-23 Nightster/RH 975/23 Nightster S/RH975S models

## FORK COVER KITS

- With this kit from Cult-Werk you can hide the fork tubes above and between the fork bridges
- This covers the fork tubes and the entire fork appears bulkier and completely black
- This fork cover kit can be used with the Original Equipment front fender or custom fenders
- The individual covers are attached using setscrews and thus center themselves on the fork tubes to ensure a secure hold
- Our covers are made of high-quality aluminum and are milled on the most modern 5-axis machining centers and then powdercoated in glossy black
- 4-piece kit includes two fork caps and two upper fork covers; 6-piece kit includes two fork caps, two upper fork covers and two lower fork covers or 49 mm bellows
- The assembly is very simple, the upper and the lower cover are only pushed over the fork tube and screwed tight; on the inside of the lower cover there is a cut-out for clearance on the fender and is therefore hardly visible



0411-0255



0411-0256

PART #	DESCRIPTION
FOR 22-23 NIGHTSTER/RH 975/23 NIGHTER S/RH975S	
0411-0255	Kit with milled fork caps and billet aluminum lower fork covers

PART #	DESCRIPTION
FOR 22-23 NIGHTSTER/RH 975/23 NIGHTER S/RH975S (CONT)	
0411-0256	Kit with milled fork caps and billet aluminum lower fork covers

## FORK CAP

- Cover the fork tubes above the fork bridge and are securely fastened with a concealed set screw
- Made of high-quality aluminum and are milled on the most modern 5-axis machining centers and then powdercoated in glossy black
- Sold in pairs



0404-0670



PART #	DESCRIPTION
0404-0670	For 22-23 Nightster/RH 975/23 Nightster S/RH975S

PART #	DESCRIPTION
0404-0670	For 22-23 Nightster/RH 975/23 Nightster S/RH975S



2201-0258



2201-0259

## DASH COVERS

- Provides a clean, cool and flatter look on the tank and is required as a replacement for the original cover if the fittings are relocated to the headlight mask with our offset
- Cover is a 100% custom-fit ABS plastic part - NO cheap GRP
- All bores and millings are milled on the most modern 5-axis CNC machining centers
- During assembly it is necessary to shorten the holder for the original dash cover and then holes have to be drilled - then the cover is attached with the new supplied bracket

PART #	DESCRIPTION
FOR 22-23 NIGHTSTER/RH 975/23 NIGHTSTER S/RH975S	
<a href="#">2201-0258</a>	Raw

PART #	DESCRIPTION
FOR 22-23 NIGHTSTER/RH 975/23 NIGHTSTER S/RH975S (CONT)	
<a href="#">2201-0259</a>	Gloss black

## AIR FILTER COVERS

- Turns the original air filter into a style element to save you the cost of a new air filter assembly and the TÜV registration
- The air filter cover is designed to fit the original air filter exactly
- 100% custom-fit ABS plastic part and no adjustment work necessary
- All bores and millings are milled on the most modern 5-axis CNC machining centers, so that the air filter cover only has to be exchanged for the original air filter cover
- The air filter cover is TOP processed, fits perfectly and turns the boring original air filter into a cool part
- Available in gloss black finished surface or paintable, with a perfect surface finish that ensures minimum painting effort
- TÜV approved



1014-0368



1014-0369

PART #	DESCRIPTION
FOR 22-23 NIGHTSTER/RH 975/23 NIGHTSTER S/RH975S	
<a href="#">1014-0368</a>	Slotted, gloss black
<a href="#">1014-0369</a>	Slotted, raw paintable



1401-0964



1401-0967

## FRONT FENDERS

- Shorter, narrower and clears the view of the front wheel
- This provides a clean and cool look
- This fender is a 100% custom-fit ABS plastic part
- The fender therefore offers a 100% fitting accuracy - no adjustment work necessary
- All bores and millings are milled on the most modern 5-axis CNC machining centers, so that the fender only has to be exchanged for the original
- Available in gloss black or a raw finish ready for painting

PART #	DESCRIPTION
FOR 22-23 NIGHTSTER/RH 975/23 NIGHTER S/RH975S	
<a href="#">1401-0964</a>	Bobber raw
<a href="#">1401-0965</a>	Bobber gloss black

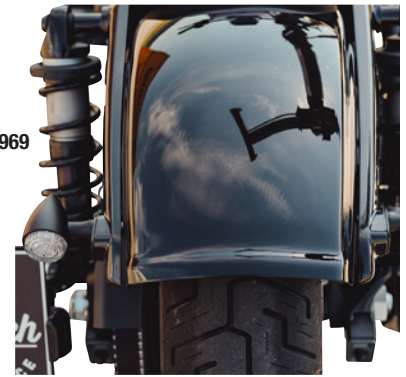
PART #	DESCRIPTION
FOR 22-23 NIGHTSTER/RH 975/23 NIGHTER S/RH975S (CONT)	
<a href="#">1401-0966</a>	Old school raw
<a href="#">1401-0967</a>	Old school gloss black



1401-0968



1401-0969



**ORIGINAL STYLE REAR FENDERS**

- All bores and millings are milled on the most modern 5-axis CNC machining centers, so that the rear fender only has to be exchanged for the original rear fender
- Available with a gloss black finish or a raw finish ready for painting
- All mount hardware is included without the need for modifications

PART #	DESCRIPTION
FOR 22-23 NIGHTSTER/RH 975/23 NIGHTSTER S/RH975S	
<b>1401-0968</b>	Raw

PART #	DESCRIPTION
FOR 22-23 NIGHTSTER/RH 975/23 NIGHTSTER S/RH975S (CONT)	
<b>1401-0969</b>	Gloss black

**TURN SIGNAL HOLDERS**



- CNC-milled/lasered, edged and then black powdercoated with a glossy finish
- Crafted for Nightster models
- Turn signal can be mounted in a hidden way
- Both items come in 2 pieces



2040-3043

PART #	DESCRIPTION
FOR 22-23 NIGHTSTER/RH 975/23 NIGHTSTER S/RH975S	
<b>2040-3043</b>	Turn signal brackets

PART #	DESCRIPTION
FOR 22-23 NIGHTSTER/RH 975/23 NIGHTSTER S/RH975S (CONT)	
<b>2040-3044</b>	Turn signal mount



**LICENSE PLATE HOLDERS**

- Cult-Werk lateral license plate holder including TÜV parts certificate for the listed license plate sizes and countries
- The shortest license plate holder on the market guarantees you a TOP look
- Made of high-quality steel, CNC-lasered and then powdercoated in black
- Includes LED license plate light with E-mark.



2030-2280

2030-2283

2030-2287

FOR 22-23 NIGHTSTER/RH 975/23 NIGHTSTER S/RH975S								
PART #	COUNTRY	SIZE	PART #	COUNTRY	SIZE	PART #	COUNTRY	SIZE
<b>2030-2280</b>	Germany	180mm x 200mm	<b>2030-2283</b>	Austria	210mm x 170mm w/ slide-in frame	<b>2030-2286</b>	France	210mm x 130mm
<b>2030-2281</b>	Germany	180mm x 200mm w/ slide-in frame	<b>2030-2284</b>	Switzerland	180mm x 140mm	<b>2030-2287</b>	Netherlands	210mm x 143mm
<b>2030-2282</b>	Austria	210mm x 170mm	<b>2030-2285</b>	Italy	170mm x 170mm			

**LATITUDE LIGHTSTRIKE™ TAILLIGHTS WITH LICENSE PLATE HOLDER**



- Replaces the entire OEM lighting assembly for a complete rear end transformation
- Features brilliant LIGHTSTRIKE™ LED run, turn and brake light that is fully customizable, with a variety of animated functions and strobe effects that stand out in traffic
- Choose between 12 different power-on animations, 10 turn signal animations with strobe options, 3 brake animations and 5 brake burst modes
- Easy plug-n-play installation
- License plate mount has hidden fasteners for an extra-clean look
- Available in chrome or black with red or light smoked lens



2010-1497



2010-1500

PART #	DESCRIPTION
FOR 14-22 FLHX/FLTRX/FLHRXS MODELS	
<b>2010-1499</b>	Chrome w/ red lens
<b>2010-1500</b>	Black w/ red lens

PART #	DESCRIPTION
FOR 14-22 FLHX/FLTRX/FLHRXS MODELS (CONT)	
<b>2010-1497</b>	Chrome w/ light smoked lens
<b>2010-1498</b>	Black w/ light smoked lens