



R1300LXE DELUXE ROLL BAG

- Versatile mounting system installs on luggage rack, back seat or sissy bar; clips onto most Saddlemen touring bags
- Rigid construction looks great empty or full
- Multiple D-rings provide easy mounting options for hard-to-fit motorcycles
- Wide top opening for easy packing
- Top carry handle and shoulder strap for easy toting off bike
- Lockable zipper pulls
- Constructed of UV-, water- and weather-resistant 1200D SaddleTuff™ and durable, maintenance-free SaddleHyde™ panels
- Dimensions: unexpanded 25,5 cm D x 40,5 cm W x 24 cm H (10" x 16" x 9,5"), expanded 25,5 cm D x 51 cm W x 24 cm H (10" x 20" x 9,5"); measures 21,3 liter (1300 cubic inch) unexpanded

PART #

3515-0075

DESCRIPTION

R1300LXE deluxe roll bag



R850 ROLL BAG

- Versatile mounting system installs on luggage rack, back seat or sissy bar; clips onto most Saddlemen touring bags
- Fully rigid; looks great empty or full
- Installs on top of any Saddlemen SaddleStow sissy bar bag
- Top carry handle and shoulder strap included for easy toting off bike
- Constructed of UV-, water- and weather-resistant 1200D SaddleTuff™
- Dimensions: 35,5 cm W x 21,5 cm H x 21,5 cm D (14" x 8,5" x 8,5"); measures 13,9 liter (850 cubic inch)

PART #

3515-0074

DESCRIPTION

R850 roll bag



PET VOYAGER

- The best way to carry your small pet on your motorcycle in comfort, plus this carrier doubles as an effective cargo bag
- Multiple vents and access flaps let you vent fresh air to your pet while providing easy access to your pet or cargo
- Spacious pet compartment includes a removable and washable bottom tray and resting pad for your pet's comfort; includes food and water trays that stow neatly in their own compartment
- Two mounting systems included; a Saddlemen Versa-Mount seat harness or adjustable sissy bar strap system easily attaches the bag to your motorcycle's seat, luggage rack sissy bar
- Quick-disconnect mounting straps and sissy bar sleeve allow the bag to be removed from your motorcycle in seconds
- Includes a plush backrest pad you can position for your, or your passenger's, riding comfort
- Convenient liner bag with carry handles lets you store clothes or cargo away from your pet or other bag contents
- Sturdy grip handle for convenient carrying – included backpack straps allow you to carry the bag on your back with ease
- Sliding leash mount allows pets freedom of movement while keeping them secured in the bag; comes with a short internal leash and a long walking leash for pet pit stops
- Pet compartment measures 40,5 cm W x 35,5 cm L x 35,5 cm T (16" x 14" x 14") 52,4 liter capacity (3200 cubic inch)

NOTE: Please note dimensions of this bag to ensure proper fit for your pet.

NOTE: For sanitary reasons we will not accept returns on Pet Voyager.



PART #
3515-0131

DESCRIPTION
Pet Voyager



LUGGAGE RACKS FOR TALL SISSY BARS

- Brilliant gloss black powdercoated finish
- Mounts with black anodized billet aluminum mounting blocks
- Heavy tubular construction

PART #	DESCRIPTION
1501-0758	Gloss black
1501-0759	Matte black

QUICK RELEASE SISSY BARS

- Solid steel construction
- Powdercoated finish for longevity
- Pad included

- 58,8 cm (23") H
- Docking hardware available separately

PART #	DESCRIPTION
FOR 18-23 FLDE/FLHC/FLHCS/FLSL/FXBB/FXBBS/FXST	
1501-0760	Gloss black
1501-0761	Matte black
3550-0395	Docking hardware



2-UP DETACHABLE LUGGAGE RACKS

- Carrying surface: 26,5 cm L x 23 cm W (10,5" x 9")
- Provides a combination of durability and style
- Sleek low profile luggage rack is an elegant solution for carrying your luggage
- Made of heavy 16 mm (5/8") wall steel tubing inside, 10 mm (3/8") steel rod outside and 12-gauge steel side plates
- Installation requires Harley-Davidson® four-point docking kit (sold separately)
- Includes replacement bushings for four-point docking hardware

PART #	DESCRIPTION
FOR 09-23 FLHR/FLHT/FLHX/FLTR/FLTRU/FLTRX	
1510-1116	Gloss black
1510-1117	Matte black

TOURING SOLO RACKS

- Carrying surface: 26,5 cm L x 33 cm L (10,5" x 13")
- Mounting distance: 25,5 cm (10") (measured from center of bolt cutouts to center of back mounting hole)
- Made of 10 mm (3/8") steel wire inside and 13 mm (1/2") steel tubing outside
- Includes bolts, washers, and foam pads for installing your rack

PART #	DESCRIPTION
FOR 09-23 FLHR/FLHT/FLHX/FLTR/FLTRU/FLTRX	
1510-1114	Gloss black
1510-1115	Matte black



1105-0267



1105-0268



1105-0263



1105-0264



DIAMONDBACK TRANSMISSION TOP COVERS

- CNC-machined from billet aluminum

PART #	DESCRIPTION
FOR 17-22 FLHT/FLHR/FLHX/FLTRX/FLTRU/H-D FL TRIKE	
1105-0267	Black
1105-0268	Chrome
FOR 07-16 FLHT/FLHR/FLHX/FLTR, 09-16 H-D FL TRIKE, 07-17 FXST/FLST, 06-17 DYNA	
1105-0265	Black
1105-0266	Chrome



DIAMONDBACK HYDRAULIC CLUTCH ACTUATOR COVERS

- CNC-machined from billet aluminum
- Direct bolt-on replacement for the stock cover

PART #	DESCRIPTION
FOR 17-20 FLHT/FLHR/FLHX/FLTRX MODELS	
1105-0263	Black
1105-0264	Chrome



0610-2242



0610-2243



0610-2246

CLUTCH MASTER CYLINDER COVERS

- Replace that stock cast cover and add some billet style to your stock master cylinder assembly
- Fully CNC-machined from 6061-T6 with styling that gives your bike a road-racer look
- Available in your choice of hard black anodized or a chrome-plated finish
- Black anodized covers machined with high-brilliance diamond face cut technique
- Gold alloy or chrome-plated socket-head hardware is included

FOR 17-20 FLHT/FLHR/FLHX/SLTRX/FLTRY/FLTRX AND 19-20 FLHTCUTG/FLRT MODELS			
PART #	DESCRIPTION	PART #	DESCRIPTION
0610-2242	Finned, black anodized	0610-2245	Smooth, black anodized
0610-2243	Finned, black anodized with silver accents	0610-2246	Smooth, chrome
0610-2244	Finned, chrome		



RECTIFIER/REGULATORS

- All rectifier/regulators are new and built to OEM specifications for a high-quality, cost-effective replacement
- These direct replacement pieces come with the factory plug ends for an easy install

PART #	DESCRIPTION
2112-1671	For 17-22 FLHT/FLHR/FLTR/FLHX; repl. OEM #74700025
2112-1665	For 09-16 FLHT/FLHR/FLTR/FLHX; repl. OEM #74505-09
2112-1669	For 14-16 FLHTKSE/FLTRUSE models; repl. OEM #74700021
2112-1656	For 97-01 FLHT/FLHR/FLTR; repl. OEM #74505-97A
2112-1670	For 18-21 Softail models; repl. OEM #74700031
2112-1664	For 11-17 FXST/FLST; repl. OEM #74540-08, 74540-11



2112-1670



2112-1659

PART #	DESCRIPTION
2112-1667	For 01-06 FXST/FLST/FXSTD; repl. OEM #74540-01
2112-1663	For 04-05 Dyna; repl. OEM #74631-04
2112-1668	For 09-13 XL; repl. OEM #74711-08
2112-1659	For 91-99 Evolution Big Twin; repl. OEM #74519-88/74519-88A
2112-1666	For 08-17 V-Rod; repl. OEM #74440-08



DRAG SPECIALTIES AGM MAINTENANCE-FREE BATTERIES

- Specifically designed for hard-starting, high-performance engines that need extra cranking power
- Radial grid technology delivers higher cranking amps and superior performance
- Special AGM (Absorbed Glass Mat) battery eliminates water loss, permitting the battery to be permanently sealed once it is filled with acid; Acid Pack included
- Superior vibration-resistance and durability provide a long service life
- PART #s 2113-0714, 2113-0715, 2113-0716 and 2113-0767 feature flush-mount terminals



2113-0716

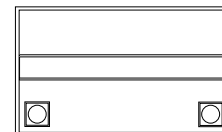
PART # DESCRIPTION

BIG TWIN/XL

2113-0716	For 99-22 FLT/FLHT/FLHX/FLTRX/FLTRU/FLTRK/FLHR and H-D FL Trikes
2113-0715	For 00-22 Softail, 99-17 FXD/FXDWG/FLD
2113-0767	For 04-22 XL, 21-22 Sportster S/RH1250S, 22 Nightster/RH975, 15-20 XG 500/750/750A, 21-22 Pan America RA1250/1250S
2113-0715	For 97-03 XL
2113-0714	For 86-96 XL

BUELL

2113-0714	For 94-96 S2, S2T Thunderbolt, 88-90 RR1200, 89-93 RS1200, 91-93 RSS1200, 87 RR1000
2113-0715	For 94-02 S3, S3T Thunderbolt, M2 Cyclone, X1 Lightning



AGM MAINTENANCE-FREE PART #	YUASA REF. #	HARLEY-DAVIDSON OEM #	COLD CRANKING AMPS	LENGTH	WIDTH	HEIGHT	TERMINAL CONFIGURATION
2113-0767	YTX14L-FT-BS	65958-04	200	15 cm (6")	87 mm (3 ⁷ / ₁₆ ")	14,5 cm (5 ³ / ₄ ")	- +
2113-0714	YTX20H-FT-BS	65991-82B	310	17,5 cm (6 ⁷ / ₈ ")	87 mm (3 ⁷ / ₁₆ ")	15,5 cm (6 ¹ / ₈ ")	+ -
2113-0715	YTX20HL-FT-BS	65989-97A/D	310	17,5 cm (6 ⁷ / ₈ ")	87 mm (3 ⁷ / ₁₆ ")	15,5 cm (6 ¹ / ₈ ")	- +
2113-0463	YTX24HL-BS	66010-82B	350	20,5 cm (8 ¹ / ₈ ")	87 mm (3 ⁷ / ₁₆ ")	16 cm (6 ³ / ₈ ")	- +
2113-0716	YTX30L-FT-BS	66010-97A/D	385	16,5 cm (6 ⁵ / ₁₆ ")	12,5 cm (5")	17,5 cm (6 ⁷ / ₈ ")	- +

CONVENTIONAL BATTERY KITS

- Drag Specialties Conventional batteries are built to the same exacting specifications and quality-control standards as OEM batteries
- Rugged and provide more cranking power over standard batteries
- Lead calcium alloy reduces water loss and service by 66% compared to standard batteries
- Includes anti-sulfation chemical formulated to reduce sulfate crystal buildup on the battery plates
- Reduces self-discharge for longer time between charges
- Fiberglass separators improve acid flow
- Kit includes battery, pre-measured acid pack, red filler tube, hardware kit and clear vent tube

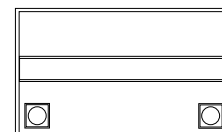


2113-0466

PART #

DESCRIPTION

2113-0466	For 65-84 FL/FLH
2113-0465	For 48-64 FL/FLH, 36-47 Knucklehead, 32-63 Servi-Car
2113-0466	For 67-78 XLH



PART #	YUASA REFERENCE #	HARLEY-DAVIDSON OEM #	CAPACITY AH (10H-R)	LENGTH	WIDTH	HEIGHT	APPROX. WEIGHT W/ OUT ACID (LB.)	TERMINAL CONFIGURATION
2113-0465	H-2	66006-29F	24	11,5 cm (4 ¹ / ₂ ")	100 mm (3 ¹⁵ / ₁₆ ")	21,4 cm (8 ⁷ / ₁₆ ")	3,4 kg (7,43 lb)	- +
2113-0466	YHD-12	66007-84	28	20,2 cm (7 ¹⁵ / ₁₆ ")	13 cm (5 ¹ / ₈ ")	16,2 cm (6 ³ / ₈ ")	6,7 kg (14,76 lb)	+ -



2113-0455

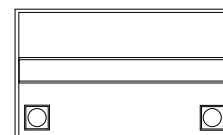
PREMIUM PERFORMANCE BATTERIES

- AGM (Absorbed Glass Mat) separators with superior grid and component designs allow Drag Specialties to offer one of the most powerful batteries in the industry
- Improved charge recovery capability from a deeply discharged condition
- Longer shelf life
- Improved life cycle performance
- Extreme vibration resistance
- Factory-Activated, spill-proof design
- Upgrade for customized motorcycles requiring the best performance

NOTE: Factory-Activated batteries should be charged once a month when not in service.

PART #	DESCRIPTION
BIG TWIN/XL/V-ROD	
2113-0455	For 99-22 FLT/FLHT/FLHX/FLTR/FLTRX/FLTRU/FLTRK/FLHR and H-D FL Trikes
2113-0454	For 00-22 Softail, 99-17 FXD/FXDWG/FLD
2113-0452	For 04-22 XL, 21-22 Sportster S/RH1250S, 22 Nightster/RH975, 15-20 XG 500/750/750A, 21-22 Pan America RA1250/1250S

PART #	DESCRIPTION
BIG TWIN/XL/V-ROD (CONT)	
2113-0454	For 97-03 XL
2113-0453	For 86-96 XL
2113-0454	For 07-17 V-Rod VRSCA/D/DX/CX



PREMIUM PERFORMANCE PART #	YUASA REF. #	HARLEY-DAVIDSON OEM #	COLD CRANKING AMPS	LENGTH	WIDTH	HEIGHT	TERMINAL CONFIGURATION
2113-0455	GYZ32HL	66010-97A/C/D	500	17 cm (6 ⁹ / ₁₆ "	12,5 cm (5")	17,5 cm (6 ⁷ / ₈ "	- +
2113-0453	GYZ20H	65991-82B	320	17,5 cm (6 ⁷ / ₈ "	87 mm (3 ⁷ / ₁₆ "	15,5 cm (6 ¹ / ₈ "	+ -
2113-0454	GYZ20HL	65989-97A/D	320	17,5 cm (6 ⁷ / ₈ "	87 mm (3 ⁷ / ₁₆ "	15,5 cm (6 ¹ / ₈ "	- +
2113-0452	GYZ16HL	65958-04	240	15 cm (6")	87 mm (3 ⁷ / ₁₆ "	14,5 cm (5 ³ / ₄ "	- +

DRAG SPECIALTIES HIGH PERFORMANCE BATTERIES

- Specifically designed for high-performance engines that need extra cranking power
- Superior engineering features include an AGM (Absorbed glass-mat) radial grid design for maximum cranking amps
- High vibration resistance
- Spill-proof, pre-filled, pre-charged, maintenance-free sealed design
- Batteries include brass spacers, stainless steel nuts, bolts and star washers

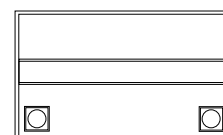
NOTE: Factory-Activated batteries should be charged once a month when not in service.

PART #	DESCRIPTION
BIG TWIN/XL/V-ROD	
2113-0451	For 99-22 FLT/FLHT/FLHX/FLTR/FLTRX/FLTRU/FLTRK/FLHR and H-D FL Trikes
2113-0449	For 00-22 Softail, 99-17 FXD/FXDWG/FLD
2113-0447	For 04-22 XL, 21-22 Sportster S/RH1250S, 22 Nightster/RH975, 15-20 XG 500/750/750A, 21-22 Pan America RA1250/1250S
2113-0449	For 97-03 XL
2113-0448	For 86-96 XL

PART #	DESCRIPTION
BIG TWIN/XL/V-ROD (CONT)	
2113-0449	For 07-17 V-Rod VRSCA/D/DX/CX
2113-0446	For 02-06 V-Rod, 07 VRSCR

BUELL	
2113-0446	For 96-99 S1, 00-07 Blast ¹
2113-0448	For 94-96 S2, S2T Thunderbolt, 88-90 RR1200, 89-93 RS1200, 91-93 RSS1200, 87 RR1000
2113-0449	For 94-02 S3, S3T Thunderbolt, M2 Cyclone, X1 Lightning

¹ Requires battery adapter kit from Buell.



FACTORY-ACTIVATED PART #	YUASA REF. #	HARLEY-DAVIDSON OEM #	COLD CRANKING AMPS	LENGTH	WIDTH	HEIGHT	TERMINAL CONFIGURATION
2113-0446	YTX14	65948-00	200	15 cm (6")	87 mm (3 ⁷ / ₁₆ "	14,5 cm (5 ³ / ₄ "	+ -
2113-0447	YTX14L-BS	65958-04	200	15 cm (6")	87 mm (3 ⁷ / ₁₆ "	14,5 cm (5 ³ / ₄ "	- +
2113-0448	YTX20H-BS	65991-82B	310	17,5 cm (6 ⁷ / ₈ "	87 mm (3 ⁷ / ₁₆ "	15,5 cm (6 ¹ / ₈ "	+ -
2113-0449	YTX20HL-BS	65989-97A/D	310	17,5 cm (6 ⁷ / ₈ "	87 mm (3 ⁷ / ₁₆ "	15,5 cm (6 ¹ / ₈ "	- +
2113-0450	YTX24HL-BS	66010-82B	350	20,5 cm (8 ¹ / ₈ "	87 mm (3 ⁷ / ₁₆ "	16 cm (6 ³ / ₈ "	- +
2113-0451	YIX30L	66010-97A/C/D	385	17 cm (6 ⁹ / ₁₆ "	12,5 cm (5")	17,5 cm (6 ⁷ / ₈ "	- +



2113-0451

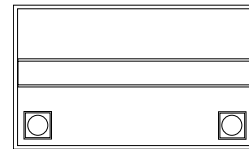


2113-0448



DRAG SPECIALTIES BATTERY

- Specifically designed for high-performance engines that need extra cranking power
- Superior engineering features include a radial grid design for maximum cranking amps
- High vibration resistance
- Not a spill-proof design
- Acid not included



PART #	DESCRIPTION					
2113-0007	For 70-78 XLCH					
PART #	YUASA REFERENCE #	HARLEY-DAVIDSON OEM #	LENGTH	WIDTH	HEIGHT	TERMINAL CONFIGURATION
2113-0007	Y12N7-4A	66006-70	13,5 cm (5 ⁵ / ₁₆ "	76,2 mm (3")	13,3 cm (5 ¹ / ₄ "	+ -



38 MM (1 1/2") HAMMERHEAD HANDLEBARS

- Aggressive new look
- Pointed tip for a look that stands out in the crowd
- 32 mm (1 1/4") clamping area with 89 mm (3 1/2") on-center knurling
- 14 cm (5 1/2") of pullback for an aggressive feel
- Accept OEM heated grips



CHROME PART #	GLOSS BLACK PART #	END RISE	WIDTH	CENTER WIDTH	PULLBACK
0601-5965	0601-5966	30,5 cm (12")	77,5 cm (30 1/2")	26,5 cm (10 1/2")	14 cm (5 1/2")
0601-5967	0601-5968	35,5 cm (14")	77,5 cm (30 1/2")	26,5 cm (10 1/2")	14 cm (5 1/2")
0601-5969	0601-5970	40,5 cm (16")	77,5 cm (30 1/2")	26,5 cm (10 1/2")	14 cm (5 1/2")



38 MM (1 1/2") THRESHER HANDLEBARS

- Traditional T-Bar look and feel
- Aggressive 90° mitered top
- 32 mm (1 1/4") diameter clamping area with 89 mm (3 1/2") on-center knurling
- 11,5 cm (4 1/2") of pullback for an aggressive feel
- Accept OEM heated grips



CHROME PART #	GLOSS BLACK PART #	END RISE	WIDTH	CENTER WIDTH	PULLBACK
0601-5971	0601-5972	30,5 cm (12")	77,5 cm (30 1/2")	26,5 cm (10 1/2")	11,5 cm (4 1/2")
0601-5973	0601-5974	35,5 cm (14")	77,5 cm (30 1/2")	26,5 cm (10 1/2")	11,5 cm (4 1/2")
0601-5975	0601-5976	40,5 cm (16")	77,5 cm (30 1/2")	26,5 cm (10 1/2")	11,5 cm (4 1/2")



FASTBACK RISERS

- Stainless hardware included
- Fits all M8 Softtails with a digital speedometer
- CNC-machined from billet aluminum with a black anodized finish
- Fits handlebars with 1" center diameter
- 10" rise, 0" pullback



PART #	DESCRIPTION
0602-1424	For 18-22 FXLR/FXLRST/FXLRS/FXBB/FXBR, 84-06/01-12/20-22 FXST



LEGIT ELYPSE 2-1 LED TURN SIGNALS

- White running and full contrast amber turn function
- Engineered in Germany with SMD-LED technology
- CNC-machined billet aluminum housings
- Black anodized finish with amber/white LEDs



PART #	DESCRIPTION
2040-2991	For 06-22 FLHT/FLHX/FLTR models



SOFTAIL GAUGE RELOCATION KITS

- 6061 billet aluminum bezel
- Carbon fiber backing
- Comes with two 8-32 mm x 1/2" hex drive flathead screws and rubber grommet
- These gauges work with OG Risers and Holeshoot Risers with the same mounting brackets as the Road Glide gauge relocators
- Must use stock speedometer
- Mounting brackets (PART #s 2210-0633 or 2210-0634) sold separately



2210-0645



2210-0646

PART #	DESCRIPTION
FOR 22 FXLRS	
2210-0645	Black
2210-0646	Chrome



CARBON HANDGUARDS

- Genuine carbon fiber construction
- UV stable with a gloss-coated resin finish to prevent fading
- Sleek look for style and wind protection
- Can be fitted to Barkbusters motorcycle-specific mount kits and two-point and single-point universal mount kits
- Dimensions: approximately 255 mm W x 120 mm H
- Not recommended for off-road use
- Sold in pairs



KOBRA HANDGUARD KIT

- Modern design fits seamlessly into the look of the motorcycle
- Protects the levers and hands from weather and debris
- Aluminum bar with robust two- or one-point mounting, depending on the model
- Handguard shells are made from impact-resistant polypropylene plastic

PART #	DESCRIPTION
0635-2290	For 21-23 Pan America RA1250/1250S

PART #	DESCRIPTION
0635-2242	Carbon handguards (pr.)



STORM HANDGUARDS

- High impact-resistant plastic construction
- Large design for maximum wind and weather protection
- Single-point clamp mount for 25,4 mm (1") diameter handlebars
- Easy installation
- Dimensions: approximately 275 mm W x 140 mm H
- Optional accessory LED lights (PART #s 0635-2279 or 0635-2280) available separately
- Sold in pairs

UNIVERSAL SINGLE POINT MOUNT HANDGUARD HARDWARE KIT

- Designed to fit with a single attachment to the handlebar
- Can mount either around the handlebar, at the inside of the controls or on the handlebar end
- Suitable for weather protection only
- Work with Storm or Carbon handguards (sold separately)

PART #	DESCRIPTION
0635-2240	Black

PART #	DESCRIPTION
0635-2251	For 25,4 mm (1") dia. round handlebars



ACCESSORIES/SPARE PARTS FOR HANDGUARDS AND KITS

- Accessories and replacement parts for Barkbusters handguards
- Available as listed

TWO-POINT MOUNT HANDGUARD MOUNT KIT

- Custom designed, bike-specific hardware kit
- Two mounting mounts for a secure, full wraparound design
- Heat-treated aluminum backbone for maximum strength and impact protection
- Compatible with Jet, VPS, Storm or Carbon handguards (sold separately)
- Must order mounts and a set handguards for a complete assembly

PART #	DESCRIPTION
0635-2275	Screw hardware kit for handguards (set of 4)
0635-2276	Hardware saddle kit for Storm handguards (kit)
0635-2274	Adaptor kit for 25,4 mm (1") dia. Handlebars

PART #	DESCRIPTION
0635-2143	For 21-22 Pan America RA1250/1250S



0635-2280



0635-2279

LED LIGHTS FOR BARKBUSTERS HANDGUARDS

AMBER LEDS

- Amber LEDs function as accessory turn signals
- E-mark approved as indicator lights
- May require optional resistor PART # 2130-0354 (sold separately) for correct flash rate
- Can be fitted to upper surface on JET guards, upper and lower surface on VPS and STORM guards
- Sold in left/right pairs

WHITE LEDS

- Increase visibility to other vehicles
- E-mark approved as position light
- Can be fitted to upper surface on JET guards, upper and lower surface on VPS and STORM guards
- Sold in left/right pairs



2130-0354

PART #	DESCRIPTION
0635-2280	Amber LEDs

PART #	DESCRIPTION
0635-2279	White LEDs

PART #	DESCRIPTION
2130-0354	Opt. LED resistors (pr.)



SPIN-ON OIL FILTERS

- High-quality spin-on filters are a dependable replacement for most H-D models
- Filters with nut include a 17 mm hex nut on the end of the filter for easy installation/removal

DESCRIPTION	BLACK	BLACK WITH NUT	CHROME	CHROME WITH NUT
FOR 86-22 H-D MODELS				
For 17-22 M-Eight (standard capacity), 99-17 Twin Cam models; repl. OEM #s 63798-99, 63731-99A	DS-275109	0712-0021	DS-275108	0712-0011
For 17-22 M-Eight (high capacity); repl. OEM #s 62700296, 62700297	0712-0641	0712-0643	0712-0640	0712-0642
For 86-22 XL (except 21-22 Sportster S/RH1250S and 22 Nightster/RH975), 09-12 XR1200/X; repl. OEM #s 63796-77A, 63806-83 and 63805-80A	DS275204	0712-0019	DS275203	-
For 02-17 V-Rod; repl. OEM #63793-01K	2005-1400	0712-0022	-	0712-0009
DESCRIPTION	BLACK	BLACK WITH NUT	CHROME	CHROME WITH NUT
FOR 36-L98 MODELS				
For 80-98 FLT, 82-94 FXR, L84-85 XL, 84-99 FXST/FLST; repl. OEM #s 63796-77A, 63806-83 and 63805-80A	DS275204	0712-0019	DS275203	0712-0009
For L82-84 FLH, L82-86 FX/FXWG, 80-E84 XL; repl. OEM #s 63782-80A and 63810-80	DS275206	0712-0132	DS275205	0712-0018
For 65-82 FX/FL, 57-78 XL; repl. OEM #63840-53	DS275201 ¹	-	-	-
For 65-82 FX/FL, 57-78 XL	0712-0379 ²	-	-	-
For 91-98 Dyna Glide; repl. OEM #63813-90	DS-275119	0712-0023	DS-275118	0712-0012
For 36-54 Big Twin; repl. OEM #63840-48A	DS275202 ¹	-	-	-

¹ Drop-in filter element only. ² Drop-in filter element and spring.



MAGNETIC RING OIL FILTERS

- High-quality chrome spin-on style oil filters
- Magnetic filters are designed with a magnetic ring in center to capture small particles of loose metal and come with pressure relief valves
- Some filters come with a 17 mm nut on the end of the filter for easy installation/removal

DESCRIPTION	CHROME	CHROME WITH NUT
FOR 86-22 H-D MODELS		
For 17-22 M-Eight, 99-17 Twin Cam (3 ¹ / ₄ "); repl. OEM # 63798-99, 63731-99A	DS-275188	0712-0008
For 86-22 XL (except 21-22 Sportster S/RH1250S and 22 Nightster/RH975), 09-12 XR1200; repl. OEM #s 63796-77A, 63806-83 and 63805-80A	DS-275126	0712-0004
DESCRIPTION	CHROME	CHROME WITH NUT
FOR 80-98 H-D MODELS		
For 91-98 FXD; repl. OEM #63813-90 (5 ¹ / ₂ ")	DS-275127	0712-0007
For 80-98 FLT, 84-99 FXST/FLST, 82-94 FXR, L84-85 XL; repl. OEM #s 63796-77A, 63806-83, 63805-80A (3 ¹ / ₄ ")	DS-275126	0712-0004
For L82-86 FX/FL, 80-E85 XL; repl. OEM #s 63782-80, 63810-80 (2 ¹ / ₄ ")	DS-275125	0712-0006



OIL FILTERS

- High-quality spin-on filter
- A dependable replacement for OEM

DESCRIPTION	BLACK	CHROME
FOR 20-22 Challenger, 22 Pursuit	0712-0479	0712-0480
FOR 14-22 Chief Classic/Dark Horse/Vintage/Vintage LE/Springfield	0712-0479	0712-0480
FOR 15-22 Roadmaster	0712-0479	0712-0480
FOR 15-22 Scout, Scout Sixty, Scout Bobber	0712-0479	0712-0480
FOR 19-20 FTR	0712-0479	0712-0480

OIL FILTER MOUNT

- Designed to replace the OEM cast mount
- Includes 3/4"-16 oil filter adapter
- Mount with OEM hardware
- 11/16" threads accept OEM hard lines
- Black finish



PART #	DESCRIPTION
0712-0390	For 92-99 Evolution Big Twin models; repl. OEM #26378-92A/26381-92A

CUSTOM OIL FILTER MOUNT

- Chrome filter mount features 1/4" NPT fittings and may be used with 3/8" stainless steel or rubber lines
- Accepts all Evolution style oil filters



PART #	DESCRIPTION
DS-275104	For 92-99 Evolution Big Twin models

REPLACEMENT AIR FILTER FOR "BOB" RETRO-STYLE AIR CLEANERS

- Reusable foam filter element for PART #1010-0191 (see page 579 of the 2022 Parts Europe FatBook for additional Drag Specialties "BOB" retro-style air cleaners)
- Sold each



PART #	DESCRIPTION
1011-0881	Repl. air filter element for "Bob" retro-style air cleaners



PREMIUM WASHABLE AIR FILTER ELEMENTS

- Durable epoxy-coated wire mesh designed to maximize airflow and provide peak filtration
- 100% reusable and washable
- Pre-oiled for quick, easy installation
- High-flow four-layer surgical-grade cotton filtration
- Urethane body will not crack or curl like rubber

PART #	DESCRIPTION
FOR BIG TWIN OEM AIR CLEANERS	
1011-4200	For 90-99 80" Evolution Big Twin (carb); K&N ref. # HD-1390; repl. OEM #29259-91A/29330-96
1011-4207	For 90-99 Screamin' Eagle Evolution Big Twin; K&N ref. # HD-0600; repl. OEM #29055-89

PART #	DESCRIPTION
FOR AFTERMARKET AIR CLEANERS	
1011-4204	For S&S "D" teardrop air cleaner; 6" x 2 1/16" (K&N ref. #E-3224)
1011-4205	For S&S teardrop air cleaner; 6" x 2 3/16" (K&N ref. #E3225)
1011-4206	For S&S Super E and G teardrop air cleaner; 6" x 2 1/2" (K&N ref. #E3226)



PREMIUM WASHABLE AIR FILTER ELEMENTS

- Durable epoxy-coated wire mesh designed to maximize airflow and provide peak filtration
- 100% reusable and washable
- Pre-oiled for quick easy installation
- High-flow four-layer surgical-grade cotton filtration
- Urethane body will not crack or curl like rubber



PART #	DESCRIPTION
FOR BIG TWIN AND V-ROD AIR CLEANERS	
1011-4230	For 17-22 FLHT/FLHR/FLHX/FLTRX/FLTRU/FLTRK/H-D FL TRIKE; repl. OEM #29400212
1011-4202	For 14-16 FLHT/FLHR/FLHX/FLTR/H-D FL Trike and 16-17 Softail (except FLSS/FLSTFBS); repl. OEM #29400045
1011-4198	For 08-13 FLHT/FLHR/FLTR/FLHX/H-D FL Trike; repl. OEM #29633-08
1011-4197	For 99-17 Twin Cam (except 08-16 Dresser/H-D FL Trike, 11-13 FXS, 12-16 FLS, 08-11 FLSTSB, 99-01 Magneti-Marelli EFI, 08-16 Dyna Glide); repl. OEM #s 29461-99, 29400042
1011-4228	For 19-22 FLDE/FLHC/FLSL/FLSB/FLFB/FXLR/FXBB/FXBR/FXFB (107") repl. OEM# 29400248
1011-4229	For 18-22 FLFBS/FLHCS/FXBRS/FXFBS/FXBBS/FXLRS, 17-21 CVO Touring (114"); repl. OEM #29400267
1011-4203	For 12-17 FLS, 11-13 FXS, 08-11 FLSTSB, 13-17 FXDB; repl. OEM #29314-08
1011-4199	For 08-17 FXD/FXDB/FXDC/FXDF/FXDL/FXDWG/FLD (except 13-17 FXDB); repl. OEM #29191-08
1011-4208	For 99-01 88" Twin Cam (w/ Magneti-Marelli EFI); repl. OEM #29462-99
1011-4211	For 02-17 V-Rod; repl. OEM #29437-01
FOR XL/BUELL	
1011-4260	For 14-22 XL (except 21-22 Sportster S/RH1250S and 22 Nightster/RH975); repl. OEM #29400015
1011-4196	For 04-13 XL (except 13 1200V); repl. OEM #29331-04
1011-4201	For 88-03 XL; repl. OEM #29331-96
FOR AFTERMARKET AIR CLEANERS	
1011-4204	For S&S "D" teardrop air cleaner; 6" x 2 ¹ / ₁₆ " (K&N ref. #E-3224)
1011-4205	For S&S teardrop air cleaner; 6" x 2 ³ / ₁₆ " (K&N ref. #E3225)
1011-4206	For S&S Super E and G teardrop air cleaner; 6" x 2 ¹ / ₂ " (K&N ref. #E3226)
1011-4209	Screamin' Eagle Stage 1 air filter Twin Cam (except 99-01, 08-17 Dresser, 08-17 Dyna); repl. OEM #29442-99A
1011-4210	Screamin' Eagle Stage 1 air filter 04-22 XL (except 21-22 Sportster S/RH1250S and 22 Nightster/RH975); repl. OEM #29044-04
1011-4212	Screamin' Eagle Stage 1 air filter 08-14 FLHTCUSE/FLHRSE; repl. OEM #29244-08
1011-4213	Screamin' Eagle Stage 1 air filter 08-17 Dyna; repl. OEM #29385-08
1011-4214 ¹	Screamin' Eagle Stage 1 air filter 14-16 FLHT/FLHR/FLHX/FLTR/H-D FL Trike and 16-17 Softail (except FLSS/FLSTFBS)

¹ Fits OEM air filter housing.



1011-3940



1011-3178



1011-2957



1011-4219



1011-2956



1011-4226



1011-4227



1011-4225



1011-2958



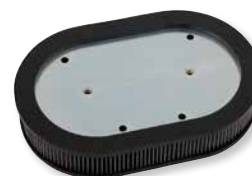
1011-3179



1011-3177



1011-2959



1011-4221



1011-2961

REPLACEMENT AIR FILTER ELEMENTS

- High-quality paper filter medium
- Meets or exceeds OEM specifications
- For use with OEM stock air filter housings
- See page 558 of the 2022 Parts Europe FatBook or page 325 of the 2022-2023 Parts Europe OldBook for additional Drag Specialties replacement air filter elements



1011-4222



1011-3247



1011-2960

NOTE: Not for use with Screamin' Eagle air cleaners (unless noted).

PART #	DESCRIPTION
FOR BIG TWIN	
1011-3940	For 17-22 FLHT/FLHR/FLHX/FLTRX/FLTRU/FLTRK/H-D FL Trike; repl. OEM #29400212
1011-3178	For 14-16 FLHR/FLHT/FLHX/FLTR/H-D FL Trikes, 16-17 Softail (except FLSS/FLSTFBS); repl. OEM #29400045
1011-2957	For 08-13 FLHR/FLHT/FLHX/FLTR and H-D FL Trikes; repl. OEM #29633-08
1011-4219	For 99-01 88" Twin Cam Fuel-Injected Dressers; repl. OEM #29462-99
1011-2956	For 99-17 Twin Cam (except 11-13 FXS, 12-17 FLS, 99-01 EFI models, 08-16 FLHT/FLHR/FLHX/FLTR and H-D FL Trike models, 08-15 Dyna Glide models, 08-11 FLSTSB); repl. OEM #s 29461-99, 29400042
1011-4226	For 18-22 FLDE/FLHC/FLSL/FLSB/FLFB/FXLR/FXBB/FXBR/FXFB (107") repl. OEM# 29400248
1011-4227	For 18-22 FLFBS/FLHCS/FXBRS/FXFBS/FXBBS/FXLRs, 17-22 CVO Touring (114"); repl. OEM #29400267
1011-4225 ¹	For 14-16 FLHT/FLHR/FLHX/FLTR/H-D FL Trike and 16-17 Softail (except FLSS/FLSTFBS) w/ Screamin' Eagle Stage 1 air cleaner
1011-2958	For 08-17 FXD/FXDB/FXDC/FXDF/FXDL/FXDWG (except 16-17 FXDLS, 13-17 FXDB); repl. OEM #29191-08
1011-3179	For 13-17 FXDB, 12-17 FLS, 11-13 FXS, 08-11 FLSTSB models; repl. OEM #29314-08
FOR XL AND V-ROD	
1011-3177	For 14-22 XL models (except 21-22 Sportster S/RH1250S and 22 Nightster/RH975); repl. OEM #29400015
1011-2959	For 04-13 XL (except 13 1200V); repl. OEM #29331-04
1011-4221	For 04-16 XL w/ Screamin' Eagle stage 1 (oval)
1011-2961	For 88-03 XL; repl. OEM #29331-96
1011-4222	For 02-17 V-Rod; repl. OEM #29437-01A
¹ Fits OEM air filter housing.	
PART #	DESCRIPTION
FOR EVOLUTION BIG TWIN	
1011-3247	For 95-99 Evolution Big Twin International models; repl. OEM #29325-95A
1011-2960	For 90-99 Evolution Big Twin; repl. OEM #29330-96



OEM-STYLE REPLACEMENT AIR FILTER ELEMENTS

- High-quality paper filter medium
- Meets or exceeds OEM specifications
- For use with OEM stock air filter housings
- See page 81 of the 2023 Parts Europe Indian catalog for additional Drag Specialties OEM-style replacement air filter elements



PART #	DESCRIPTION
1011-3523	For 14-22 Chief Classic/Vintage/Chieftain/Roadmaster



GOLD 43 MM INVERTED FORK TUBES

- Titanium nitride coating
- Designed to fit a wide variety of models
- Lengths given for OEM replacements may not be the exact OEM length
- 43 mm Inverted style fork tubes fit OEM legs and cartridges (includes 50,8 mm (2") spacers for plus size tubes)
- Sold in pairs



PART #	DESCRIPTION
FOR 18-20 FXFB, 18-22 FXFBS, 20-22 FXLRS, 22 FXLRST	
0404-0666	LH 584 mm (23"), RH 578 mm (22 ³ / ₄ ")(stock)
0404-0663	LH 635 mm (25"), RH 629 mm (24 ³ / ₄ ")

BLACK 43 MM INVERTED FORK TUBES

- Black Diamond-like carbon coating
- Designed to fit a wide variety of models
- Lengths given for OEM replacements may not be the exact OEM length
- 43 mm Inverted style fork tubes fit OEM legs and cartridges (includes 50,8 mm (2") spacers for plus size tubes)
- Sold in pairs



PART #	DESCRIPTION
FOR 18-20 FXFB, 18-22 FXFBS, 20-22 FXLRS, 22 FXLRST	
0404-0665	LH 584 mm (23"), RH 578 mm (22 ³ / ₄ ")(stock)
0404-0662	LH 635 mm (25"), RH 629 mm (24 ³ / ₄ ")

HARD CHROME 43 MM INVERTED FORK TUBES

- Finish is electrolyzed for increased hardness of 55-60 Rockwell
- Increased hardness for better long-lasting corrosion resistance
- Smoother finish creates less drag and seal wear
- Not as bright of a finish as chrome, but more durable
- Check length before ordering
- Lengths given for OEM replacements may not be the exact OEM length
- 43 mm Inverted style fork tubes fit OEM legs and cartridges (includes 50,8 mm (2") spacers for plus size tubes)
- Sold in pairs



PART #	DESCRIPTION
FOR 18-20 FXFB, 18-22 FXFBS, 20-22 FXLRS, 22 FXLRST	
0404-0664	LH 584 mm (23"), RH 578 mm (22 ³ / ₄ ")(stock)
0404-0661	LH 635 mm (25"), RH 629 mm (24 ³ / ₄ ")