



## 909 2-INTO-2 EXHAUST SYSTEMS

- PowerPort crossover makes for a significant power increase from just off idle to redline
- Unique blend of performance, sound, style and price
- Class-leading power
- Expanded end and rolled tips
- Bodies expand from 76,2 mm (3") at the front to 8 mm (3 1/2") at the rear
- 50,8 mm (2") constant velocity cores for exceptional sound and performance
- Removable baffles

PART #	DESCRIPTION
FOR 12-17 FXD/FXDWG	
<a href="#">1800-2095</a>	Chrome
<a href="#">1800-2096</a>	Black
FOR 06-11 FXD/FXDWG	
<a href="#">1800-2098</a>	Black

PART #	DESCRIPTION
FOR 18-22 FXBB/FXBBS/FXLR/FXLRS/FLSL/FLDE	
<a href="#">1800-2253</a>	Black
FOR 18-22 FXFB/FXFBS	
<a href="#">1800-2299</a>	Black

## SPEEDSTER SHORT 909 2-INTO-2 SYSTEMS

- PowerPort crossover makes for a significant power increase from just off idle to redline
- PowerPort increases power and overall performance by providing superior scavenging of exhaust gases over most standard exhaust systems; similar to what you might expect from a 2-into-1 system
- Shotgun-styled pipes
- Large 2,5", 222°, full-length heat shields fit from the exhaust



PART #	DESCRIPTION
FOR 07-13 XL	
<a href="#">1800-2091</a>	Chrome
<a href="#">1800-2092</a>	Black

PART #	DESCRIPTION
FOR 14-22 XL (EXCEPT 21-22 SPORTSTER S/RH1250S, 22 NIGHTSTER/RH975)	
<a href="#">1800-2093</a>	Chrome
<a href="#">1800-2094</a>	Black

# VANCE HINES



## ADVENTURE HI-OUTPUT 450 SLIP-ON MUFFLER

- Designed specifically for the Revolution Max 1250 motor, the Vance & Hines Adventure Hi-Output 450 delivers a strong increase in horsepower and torque versus the bike's stock Revolution Max exhaust system while reducing overall weight of exhaust by approximately 6 lb
- Cutting-edge baffle design delivers bold rumble while meeting J2825 decibel levels
- 4 1/2" dia. slip-on delivers over 5 hp and 5' lbs torque
- CNC-machined billet end cap; 304 stainless steel finish
- Compatible with Harley-Davidson factory saddlebags and centerstand
- All necessary instructions and hardware included

PART #	DESCRIPTION
1801-1492	For 21-22 Pan America RA1250/1250S



1020-3513



1020-3962



## FUELPAK FP4

- Made of polycarbonate plastic/Bluetooth® low energy, FP4 hardware is smaller and thinner than the previous generation electronics product and is made for Stage 1 applications
- Unit's LEDs have been simplified so the rider knows exactly what is happening between the FP4 and the rider's motorcycle
- Built from the ground up, Android and iPhone apps feature a new rider interface and are easier to navigate and use than ever before
- Live Data in the FP4 app has been upgraded with the whole new look and an additional gauge to track more crucial data while riding
- All-new Performance Data feature allows rider to record their ride, look at all available sensors in the created chart
- All necessary hardware and instructions included
- ECE approved



PART #	DESCRIPTION
1020-3513	For 21-22 FLHT/FLHX/FLHR/FLTRX/H-D FL Trike, 21-22 FXBB/S/FXFB/S/FLXR/S/FXST/FLHC/C/FLFB/S/FLSL/FLSB (including CVO models)
1020-3962	For 14-20 FLHT/FLHX/FLTRX/S/FLTRU/FLTRK/FLHT, 15-20 FLRT, 11-20 Softails, 12-17 Dynas (excluding 11-13 CVO Softails) 12-17 Dynas, 14-22 XL Sportster models (except 21-22 Sportster S/RH1250S) and 15-20 XG500/750/750A
1020-4028	For all 07-13 FLHT/FLHX/FLHR/FLTRX/H-D FL Trike (except 07-08 CVO models), 07-10 FXST/FLST, 07-11 FLD/FXD/FXDWG, 08-11 FXCW/C, 07-13 XL/XR models)



## POWER COMMANDER 6

- Compact design for discreet placement and easy uninstallation to revert to stock settings
- Easily change and upgrade tunes as you upgrade parts
- Comes with Power Core software that connects dyno runs with our EFI Tuning Devices to unlock your ride's potential
- Pair with other Power Commander accessories like the Autotune, Quickshifter or POD-300
- Analog input allows you to install any 0-5 volt sensor and build an adjustment table based on its input such as boost or temperature
- Easily connects to your computer via USB
- Each cylinder can be mapped individually and for each gear, giving riders more granular control



PART #	DESCRIPTION
<a href="#">1020-3599</a> <sup>1</sup>	For 21-22 FLHT/FLHX/FLHR/FLTRX/H-D FL Trike, 21-22 FXBB/S/FXFB/S/FXLR/S/FXST/FLHC/C/FLFB/S/FLSB (including CVO models), 21-22 Pan America RA1250/1250S models
<a href="#">1020-3593</a> <sup>1</sup>	For 07 FLHT/FLHX/FLHR/FLTR
<a href="#">1020-3592</a> <sup>1</sup>	For 02-06 FLHT/FLHX/FLHR/FLTR
<a href="#">1020-3595</a> <sup>1</sup>	For 97-01 FLHT/FLHX/FLHR/FLTR
<a href="#">1020-3594</a> <sup>1</sup>	For 16-17 FLS/FLST

PART #	DESCRIPTION
<a href="#">1020-3611</a> <sup>2</sup>	For 22 Chief 111"
<a href="#">1020-3607</a> <sup>2</sup>	For 14-20 Chief 111"
<a href="#">1020-3610</a> <sup>2</sup>	For 20-21 Challenger

PART #	DESCRIPTION
<a href="#">1020-3589</a> <sup>1</sup>	For 01-06 FXST/FLST
<a href="#">1020-3596</a> <sup>1</sup>	For 16-17 FXDLS 110" models
<a href="#">1020-3587</a> <sup>1</sup>	For 12-17 Dyna Glide (except FXDLS)
<a href="#">1020-3590</a> <sup>1</sup>	For 04-05 Dyna Glide
<a href="#">1020-3588</a> <sup>1</sup>	For 12-17 V-Rod
<a href="#">1020-3591</a> <sup>1</sup>	For 02-07 V-Rod

<sup>1</sup> Includes ignition adjustment.

PART #	DESCRIPTION
<a href="#">1020-3608</a> <sup>1</sup>	For 15-21 Scout
<a href="#">1020-3609</a> <sup>1</sup>	For 17-21 Scout Sixty

<sup>1</sup> Includes ignition adjustment.

<sup>2</sup> With crank sensor.



## VALVE COVERS

- CNC-machined billet aluminum
- Sold in pairs
- See page 697 of the 2022 Parts Europe FatBook for additional valve cover styles



0940-2051



0940-2054

### FOR 17-22 M-EIGHT MODELS

PART #	DESCRIPTION
<b>SMOOTH</b>	
<a href="#">0940-2051</a>	Black
<a href="#">0940-2052</a>	Chrome

PART #	DESCRIPTION
<b>DIAMONDBACK</b>	
<a href="#">0940-2053</a>	Black
<a href="#">0940-2054</a>	Chrome



## DIPSTICK COVERS

- CNC-machined from billet aluminum
- Replaces existing cover on OEM oil dipstick
- Must remove stock cover before installation

PART #	DESCRIPTION
<b>FOR 17-21 FLHT/FLHR/FLTRX/FLTRU/FLTRK/FLHX AND H-D FL TRIKE</b>	
<a href="#">0710-0278</a>	Black, diamondback
<a href="#">0710-0279</a>	Chrome, diamondback



0710-0278



0710-0277

PART #	DESCRIPTION
<b>FOR 07-16 FLT/FLHT/FLHR/FLTR/FLHX/H-D FL TRIKE MODELS AND 06-17 DYNA MODELS</b>	
<a href="#">0710-0276</a>	Black, diamondback
<a href="#">0710-0277</a>	Chrome, diamondback



0601-5925



0601-5926



0601-5927



0601-5928

## 25 MM (1") MOTOHIGH 2.0

- Motocross-style handlebar
- Aggressive profile
- Slotted for internal wiring
- 89 mm (3 1/2") on-center knurling
- Available in chrome, gloss black, flat black, and brushed stainless steel
- Fits any riser with a 25 mm (1") clamping area

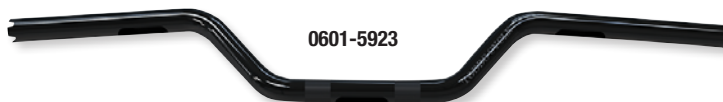
PART #	DESCRIPTION	WIDTH	END RISE	CENTER WIDTH	PULLBACK
0601-5925	Brushed stainless steel	75 cm (29,5")	11,5 cm (4,5")	13,2 cm (5,2")	6 cm (2,35")
0601-5926	Chrome	75 cm (29,5")	11,5 cm (4,5")	13,2 cm (5,2")	6 cm (2,35")
0601-5927	Gloss black	75 cm (29,5")	11,5 cm (4,5")	13,2 cm (5,2")	6 cm (2,35")
0601-5928	Flat black	75 cm (29,5")	11,5 cm (4,5")	13,2 cm (5,2")	6 cm (2,35")



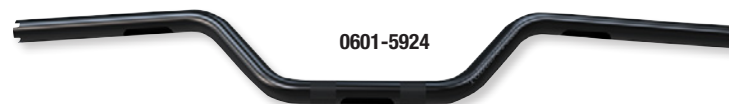
0601-5921



0601-5922



0601-5923

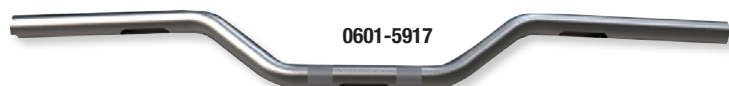


0601-5924

## 25 MM (1") MOTOMID 2.0

- Motocross-style handlebar
- Aggressive profile
- Slotted for internal wiring
- 89 mm (3 1/2") on-center knurling
- Available in chrome, gloss black, flat black, and brushed stainless steel
- Fits any riser with a 25 mm (1") clamping area

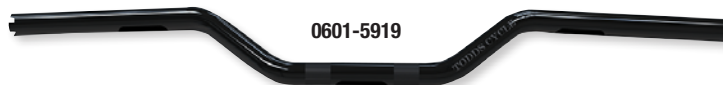
PART #	DESCRIPTION	WIDTH	END RISE	CENTER WIDTH	PULLBACK
0601-5921	Brushed stainless steel	75 cm (29,5")	89 mm (3,5")	13,2 cm (5,2")	51 mm (2")
0601-5922	Chrome	75 cm (29,5")	89 mm (3,5")	13,2 cm (5,2")	51 mm (2")
0601-5923	Gloss black	75 cm (29,5")	89 mm (3,5")	13,2 cm (5,2")	51 mm (2")
0601-5924	Flat black	75 cm (29,5")	89 mm (3,5")	13,2 cm (5,2")	51 mm (2")



0601-5917



0601-5918



0601-5919



0601-5920



## 25 MM (1") MOTOLOW 2.0

- Motocross-style handlebar
- Aggressive profile
- Slotted for internal wiring
- 89 mm (3 1/2") on-center knurling
- Available in chrome, gloss black, flat black, and brushed stainless steel
- Fits any riser with a 25 mm (1") clamping area

PART #	DESCRIPTION	WIDTH	END RISE	CENTER WIDTH	PULLBACK
0601-5917	Brushed stainless steel	75 cm (29,5")	64 mm (2,5")	13,2 cm (5,2")	44 mm (1,75")
0601-5918	Chrome	75 cm (29,5")	64 mm (2,5")	13,2 cm (5,2")	44 mm (1,75")
0601-5919	Gloss black	75 cm (29,5")	64 mm (2,5")	13,2 cm (5,2")	44 mm (1,75")
0601-5920	Flat black	75 cm (29,5")	64 mm (2,5")	13,2 cm (5,2")	44 mm (1,75")



## SOLID RISER BUSHINGS

- Rigid mount your handlebars with these precision CNC-machined bushings
- Sold in pairs



0602-1400

0602-1401

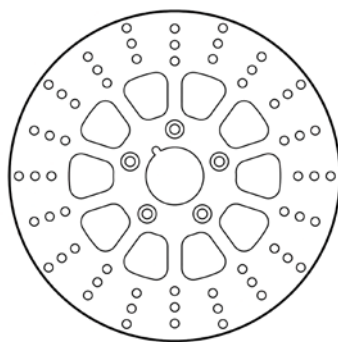
FOR 99-22 FLT/FLHT/FLHR/FLHX/FLTR, H-D FL TRIKES AND 18-22 SOFTAILS

PART #	DESCRIPTION	PART #	DESCRIPTION
0602-1400	Black	0602-1401	Chrome

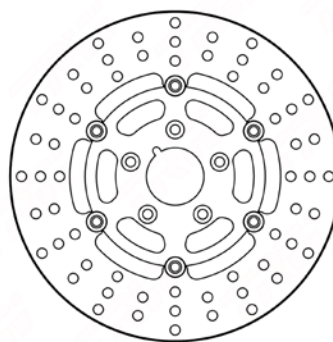


## BRAKE ROTORS

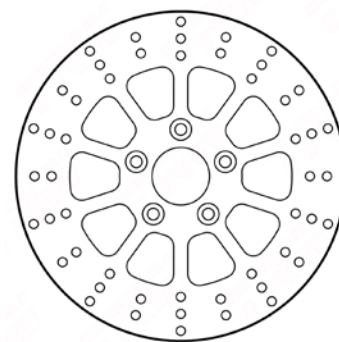
- Outstanding silhouette produced by high-performance laser cutting
- Low wear even under high stress
- Constant roughening prevents glazing of the pads
- Uniform increase and decrease of temperature



1711-1861



1711-1863



1711-1862

FITS MODEL	MULTI-SPOKE	FULL FLOATING
<b>FRONT</b>		
For 84-99 Big Twin, 84-85 XL models	1711-1861	1711-1863
<b>REAR</b>		
For 92-99 Big Twin models (except FLT/FLHT, XL)	1711-1862	-



## BELT GUARD

- All bores and millings are milled on the most modern 5-axis CNC-machining centers and then the part is powdercoated black
- The belt protection gives your Harley a sportier and more subtle look than the original part thanks to the milled elements

DESCRIPTION	PART #
1202-0169	For 18-22 Softail models (except FXDR/FXDRS)



## NIGHT ROD-STYLE HEADLIGHT MASK

- Designed to provide a significantly more modern look
- Kit includes a high-quality ABS plastic mask and a CNC-lasered headlight bracket that ensures a perfect fit
- Speedometer remains in the original position
- No changes to the original cables are necessary
- All the holes needed to attach the mask are already there
- All changes are mounted on the original breakpoints, thus ensuring a firm and secure hold
- Headlight can be adjusted, just like the original, in order to be able to set the headlight range optimally
- Available in a raw finish ready for painting

PART #	DESCRIPTION
2001-2554	For 18-22 FXBB/FXBBS/FXST



## RACING SIDE COVERS

- These covers are an ABS plastic part and are CNC-milled on the most modern 5-axis machining centers to ensure OE quality
- Elaborately designed and result in a cool and clean look after mounting
- Available in gloss black (finished surface) finish with a cut-out for damper adjustment

PART #	DESCRIPTION
0520-3714	For 18-22 Softail models



### CUSTOM SPOILER

- Constructed from ABS plastic and CNC-milled on the most modern 5-axis machining centers to ensure OE quality
- A new metal holder and all mounting material are included for the assembly of the spoiler and it can be exchanged for the original radiator cover in a few minutes
- Available in glossy black to match the OE color

**NOTE:** The spoiler is delivered without a grille.

PART #	DESCRIPTION
0504-0384	For 18-22 Softail models

### CUSTOM FRONT FENDER FOR SOFTAIL

- Design is shorter, narrower and clears the view of the front wheel to provide a clean and cool look
- This front fender is a 100% custom-fit ABS plastic part, and therefore offers a 100% perfect fit with no adjustment work necessary
- All bores and millings are milled on the most modern 5-axis CNC machining centers, so that the fender only has to be exchanged for the original fender
- The fender is TOP processed, fits perfectly and gives a clear view of the front wheel
- Original fit - new design
- V2 style with three air intakes on each side (includes grilles to cover the openings)
- Available in gloss black finish



PART #	DESCRIPTION
1401-0879	For 18-22 FXLRS

### CENTRAL LICENSE PLATE HOLDER

- Fits exactly in the middle of the body of the original rear fender and thus the original bracket can be removed
- Made of high-quality steel, CNC-lasered and then powdercoated in black
- The element in which the lighting is located is made of high-quality ABS plastic and milled on 5-axis CNC machines
- Screws to the original attachment points on the fender (requires slightly longer screws, which are included) or mounts to the rear axle
- Includes TÜV parts certificate
- Available with LED license plate light with E-mark

**NOTE:** Depending on the size of the license plate and the setting of the holder, it is necessary to check the spring deflection and limit it if necessary. The required spring deflection limiters are included in the scope of delivery.



PART #	DESCRIPTION
2030-2186	For 18-22 FXFB/FXFBS



## DRAG SPECIALTIES PREMIUM HEAVY-DUTY INNER TUBES

- Tubes feature a full 2 mm thickness compared to a standard tube 1,2 mm thickness
- More durable with better puncture resistance
- Butyl/rubber construction
- Available in popular 16", 19" and 21" sizes
- For Valve Stem Types, see page 316 of the 2022 Parts Europe Tires, Tools & Chemicals catalog

PART #	SIZE	VALVE STEM	PART #	SIZE	VALVE STEM
0350-0631	130/90-16	CMV	0350-0627	5.00/5.10-16	CMV
0350-0630	130/90-16	SMV	0350-0625	5.00-5.10-16	SMV
0360-0629	150/80-16	CMV	0350-0626	3.25/3.50-19	CMV
0350-0628	150/80-16	SMV	0350-0624	2.75/3.00-21	CMV



## DRAG SPECIALTIES INNER TUBES

- High-quality, standard thickness butyl rubber inner tubes
- Custom sizes for extra-wide wheel applications
- For Valve Stem Types, see page 316 of the 2022 Parts Europe Tires, Tools & Chemicals catalog
- Sold each
- Do not use on rim types CP or MT H2

PART #	RIM SIZE	FITS TIRE SIZE	VALE STEM TYPE	PART #	RIM SIZE	FITS TIRE SIZE	VALE STEM TYPE
DS181228	15"	5.00 - 5.10", 130/90	SRV	0350-0064	17"	200/55	CMV
0350-0669	16"	5.00 - 5.10", 180/65	SRV	DS181222	18"	3.50 - 4.00", 100/90, 110/90, MM, MN/MP	CMV
DS181226	16"	5.00 - 5.10", 5.00", 5.50", 5.50/6.00"	SRV	DS181223	18"	4.00 - 4.50", 110, 120, MR	CMV
DS181227	16"	5.00 - 5.10", 5.00", 5.50", 5.50/6.00"	SMV	DS181220	18"	180/55	CMV
DS181232	16"	5.00 - 5.10", 5.00", 5.50", 5.50/6.00"	CMV	DS181234	18"	240/40	CMV
0350-0173	16"	130/90, 140/90, MT90, MU85	SRV	DS181229	19"	2.75 - 3.00", 80/90, MH	CMV
0350-0174	16"	130/90, 140/90, MT90, MU85	SMV	0350-0090	19"	3.25", 90/90, MJ	CRV (0,73" stem diameter)
0350-0175	16"	130/90, 140/90, MT90, MU85	CMV	0350-0123	19"	3.25", 90/90, MJ	CRV (0,45" stem diameter)
0350-0115	16"	6.00", 150/80, MV	SMV	DS181230	19"	3.25 - 3.50", 90/90 100/90, MJ, MM	CMV (0,45" stem diameter)
0350-0116	16"	6.00", 150/80, MV	CMV	DS181224	21"	2.75 - 3.00", 80/90, MH	CMV
0350-0117	16"	180/65	CMV	DS181225	21"	3.25 - 3.50", 90/90, 100/90, MJ, MM	CMV
DS181221	16"	200/60	CMV	DS181231	21"	4.00 - 4.10", 110/90, 120/70, MN, MP	CMV
0350-0437	17"	160/60	CMV				
0350-0178	17"	160/70	SMV				



## RIM STRIPS

- High-quality heavy-duty rubber rim strip
- Prevent chafing of the inner tube by spoke nipples
- Measurements given are for rim diameter and actual width of the rim strips
- Sold in 10-pack to dealer



PART #	DESCRIPTION	PART #	DESCRIPTION	PART #	DESCRIPTION
DS181508	15" x 5", center valve	0350-0438	17" x 4,5", center valve	DS181510	19" x 0,75", center valve
DS181503	16" x 1,5", center valve	0350-0065	17" x 6", center valve	DS181507	21" x 0,75", center valve
DS181504	16" x 1,5", side valve	DS181502	18" x 2", center valve	DS181500	21" x 1,5", center valve
0350-0091	16" x 2,25", center valve	DS181506	18" x 3,1", center valve	DS181505	21" x 1,75", center valve
DS181501	16" x 3,1", center valve	DS181509	18" x 6,5", center valve		