

**VANCE  
HINES**

## UPSWEEEP 2-INTO-1 EXHAUST SYSTEM

- High-grade 304 stainless steel, TIG-welded with works finish
- Oversized merge collector with megaphone muffler
- Race inspired heat shields
- Includes mounting hardware, installation instructions and adapter for mid control models

**PART #****1800-2466****DESCRIPTION**

For 04-20 XL models

## S&S CYCLE



A history of proven performance, driven by a passion for speed. S&S continues to be the industry leader for quality high-performance parts for your American V-Twin. The new line of M-Eight flywheel assemblies offer superior performance and strength compared to the stock flywheel. The assemblies include S&S high-strength connecting rods, ideal for use when running gear-drive cams. Want maximum performance from your M-Eight motor? Look to S&S!



1800-2469



1800-2470



0922-0163

## SUPERSTREET 2-INTO-1 EXHAUST SYSTEMS

- Classic 2-into-1 styling
- Computer-aided design and precision bending for maximum ground clearance
- Stainless steel stepped header construction
- Full heat shield coverage on front and rear header pipes
- Oxygen sensor ports allow the use of wide band or stock O<sub>2</sub> sensors
- New multi-faceted end cap design
- dB reducer (included) meets SAE J2825 sound standard; reducer can be removed from Race Only systems (not removable from 50-state systems)
- Passenger peg relocation bracket included

### FOR 18-20 FLFB, FLFB, FXBRS, FXDRS

#### PART # DESCRIPTION

##### 50-STATE

<b>1800-2469</b>	Black w/ black end cap
<b>1800-2470</b>	Chrome w/ black end cap

##### RACE ONLY

<b>1800-2467<sup>1</sup></b>	Black w/ black end cap
<b>1800-2468<sup>1</sup></b>	Chrome w/ black end cap

<sup>1</sup> For closed-course competition use only. Not intended for street use.

## M-EIGHT FLYWHEEL ASSEMBLIES

- Consistent balance and precision machining
- Heat-treated 4140 material is harder and 114% stronger than stock
- S&S high-strength connecting rods are perfect for use with gear-drive cams
- Available with either full width or tapered wristpin connecting rods
- Choose from 4<sup>3</sup>/<sub>8</sub>" , 4<sup>1</sup>/<sub>2</sub>" or 4<sup>5</sup>/<sub>8</sub>" stroke, with or without balancer gear
- No welding required

### FOR 17-20 M-EIGHT

PART #	DESCRIPTION
<b>4<sup>1</sup>/<sub>2</sub>" STROKE</b>	
<b>0922-0163</b>	Tapered wrist pin
<b>0922-0166</b>	Full wrist pin
<b>0922-0169</b>	No balancer gear, tapered wrist pin
<b>0922-0172</b>	No balancer gear, full wrist pin
<b>4<sup>3</sup>/<sub>8</sub>" STROKE</b>	
<b>0922-0164</b>	Tapered wrist pin
<b>0922-0167</b>	Full wrist pin
<b>0922-0170</b>	No balancer gear, tapered wrist pin
<b>0922-0173</b>	No balancer gear, full wrist pin
<b>4<sup>5</sup>/<sub>8</sub>" STROKE</b>	
<b>0922-0165</b>	Tapered wrist pin
<b>0922-0168</b>	Full wrist pin
<b>0922-0171</b>	No balancer gear, tapered wrist pin
<b>0922-0174</b>	No balancer gear, full wrist pin



## KHROME WERKS

With a rich history in engineering excellence, Khrome Werks creates industry-leading products with style, fit and finish that never disappoint. Our sissy bar mounts are produced to be incredibly strong yet very sleek and stylish.



1504-0096



1504-0097



1504-0099



1504-0103



1504-0100



1504-0098



### SISSY BAR SIDE PLATES

- Side plates are a bolt-on design – no drilling required
- Available in chrome or with a gloss black finish
- Sold in pairs

**NOTE:** Bars and side plates sold separately: see the 2020 Parts Europe FatBook for required round or square sissy bars

PART #	DESCRIPTION
<b>CHROME</b>	
1504-0095	For 18-20 FLFB/FLFBS/FXBR/FXBRs
1504-0096	For 18-20 FLFB/FXLR
1504-0097	For 18-20 FLDE/FLHC/FLHCS/FLSL/FXBB
<b>GLOSS BLACK</b>	
1504-0103	For 14-20 FLHR/FLHRSE/FLHX/FLHXS
1504-0099	For 18-20 FXFB/FXFBs
1504-0100	For 18-20 FLFB/FLFBS/FXBR/FXBRs
1504-0101	For 18-20 FLFB/FXLR
1504-0102	For 18-20 FLDE/FLHC/FLHCS/FLSL/FXBB
1504-0098	For 04-20 XL



### BAGGER-TAIL SADDLEBAG MOUNTS FOR SOFTAIL MODELS

- Made of high-quality steel with a black powdercoat finish
- Come with fastening mechanisms
- Will work with fixed or detachable sissy bar side plates
- Use 93-13 style OEM hard-sided saddlebags, which must be purchased separately

U.S. Patent #7,278,560.B2

**NOTE:** Will not fit models with Shotgun-style exhaust; exhaust must be lower than rear axle.

**NOTE:** Requires turn signal to be relocated.

**NOTE:** May not fit with all styles of axle covers.

PART #	DESCRIPTION
3501-1434	For 18-20 FLSL/FXBB



### BAGGER-TAIL FILLER PANELS

- Used with Bagger-Tail brackets to fill space between saddlebags and fender
- Made from 16-gauge cold-rolled steel
- Available in black finish, fit with 14-20 style fiberglass or ABS hard bags
- Sold in pairs

PART #	DESCRIPTION
3501-1435	For 08-17 FLST







## DRAG SPECIALTIES

Your best resource for V-Twin performance parts and accessories for more than 50 years! Drag Specialties brand products are the finest available for your bike. From simple maintenance items to full-on custom parts and accessories, Drag Specialties is proud to be the preferred brand of choice for American V-Twin motorcycle enthusiasts.



0802-1365



0802-1367



0802-1366



0802-1368



### PREDATOR III SEATS

- Features a 16,5 cm (6 1/2") tall driver support with unique styling
- High-quality automotive-grade vinyl cover
- Molded polyurethane foam for maximum comfort and styling
- Seat is made narrow up front for better leg clearance
- 5 mm (3/16") ABS thermoformed seat base for a perfect fit, with a carpeted bottom and rubber bumpers to protect paint
- Fits with all Drag and most H-D sissy bars
- Includes all mounting hardware

#### PART #

#### DESCRIPTION

##### FOR 84-99 FXST/FLST MODELS

75 CM L OVERALL (34,5 CM L X 28 CM W FRONT) (25,5 CM L X 16 CM W REAR)  
(29 1/2" L OVERALL (13 1/2" L X 11" W FRONT) (10" L X 6 1/4" W REAR))

0802-1365

Smooth

0802-1366

Double diamond, black thread

0802-1367

Double diamond, silver thread

0802-1368

Double diamond, red thread

##### FOR 96-03 FXD/FXDWG

75 CM L OVERALL (35,5 CM L X 28,5 CM W FRONT) (26,5 CM L X 16,5 CM W REAR)  
(29 1/2" L OVERALL (14" L X 11 1/4" W FRONT) (10 1/2" L X 6 1/2" W REAR))

0803-0651

Smooth

0803-0652

Double diamond, black thread

0803-0653

Double diamond, silver thread

0803-0654

Double diamond, red thread



2113-0734



2113-0735

### BATTERY CABLE KITS

- Black 4-gauge cable manufactured with pure electrolytic-grade, 36-gauge tinned copper strands for maximum current transfer and superior flexibility
- All cables feature 6,4 mm (1/4") and 7,9 mm (5/16") terminals
- Increases starter performance by supplying maximum battery current to the starter motor
- Contains all battery cables to replace OEM cables.

**NOTE:** Cables do not have auxiliary wires.

PART #	DESCRIPTION
2113-0734	For 09-17 Softail; cable lengths 14 cm (5 1/2") and 27,5 cm (10 3/4"); OEM #70060-08A, #70082-08A
2113-0735	For 10-13 XL; cable lengths 33 cm (13") and 32 cm (12 5/8"); OEM #70295-10, #70296-04A

### STANDARD LENGTH STAINLESS STEEL FRONT BRAKE LINE KITS

- Features clear-coated stainless steel or black vinyl-coated braided lines with chrome steel fittings

**NOTE:** All measurements are approximate.



#### CLEAR-COATED STAINLESS STEEL

PART #	FITS MODEL	OEM #	LENGTH
FOR FX/FL SOFTAIL MODELS W/ ABS (UPPER LINE ONLY)			
1741-5754	For 15-17 FLSTC	41800299	91 cm (35 3/4")
1741-5764	For 15-17 FLSTN	41800300	76,5 cm (34")
1741-5776	For 15-17 FXSB/FLSTF/FLSTFB/FLSTFBS/FLSS, 16-17 FLSS	41800319, 41800320	78 cm (30 3/4")

#### BLACK VINYL-COATED STAINLESS STEEL

PART #	FITS MODEL	OEM #	LENGTH
FOR FX/FL SOFTAIL MODELS W/ ABS (UPPER LINE ONLY)			
1741-5759	For 15-17 FLSTC	41800299	91 cm (35 3/4")
1741-5770	For 15-17 FLSTN	41800300	76,5 cm (34")
1741-5782	For 15-17 FXSB/FLSTF/FLSTFB/FLSTFBS/FLSS, 16-17 FLSS	41800319, 41800320	78 cm (30 3/4")



## REPLACEMENT AIR FILTER ELEMENT

- High-quality paper filter medium
- Meets or exceeds OEM specifications
- For use with OEM stock air filter housings



PART #	DESCRIPTION
1011-4224	For 08-17 Dyna w/ Screamin' Eagle stage I air cleaner; repl. OEM #29385-08



## KNUCKLE PROFILER SEATS

- Narrow styling, a thin profile and low riding height
- Features a unique blend of variable-density foam and SaddleGel™ that eases tailbone pressure and improves circulation
- Proprietary GelCore™ technology dampens, diverts and deflects energy from road shock and engine vibration for a smooth, comfortable ride
- Supple SaddleHyde™ offers a combination of comfort, glove-soft leathery feel and weather-resistant, no-maintenance good looks



0802-1357

PART #	DESCRIPTION
0802-1363	FOR 18-20 FLDE/FLSL/FXBB/FLHC/FLHCS
0802-1362	FOR 18-20 FXBR/FXBRs
0802-1357	FOR 18-20 FLFB/FLFBS



## ONE-PIECE SISSY BARS

- Classic paperclip-style bar bolts directly to fender struts
- Features 3/4" x 0,120" DOM round steel tubing
- 63,5 cm (25") tall from center
- Beefy profile and clean installation
- Designed to complement two-up and solo seats
- Available in gloss black, matte black or chrome finish
- Includes backrest pad measuring 23 cm H x 18 cm W (9" x 7")

**NOTE:** For the complete line of Motherwell one-piece sissy bars, see the 2020 Parts Europe FatBook.



1501-0668

PART #	DESCRIPTION
FOR 18-20 FLDE/FLHC/FLSL/FXBB	
1501-0667	Gloss black
1501-0668	Matte black
1501-0669	Chrome



## ALTERNATOR STATOR

- Meets or exceeds OEM specifications and features precise construction



PART #	DESCRIPTION
2112-1312	For 14-18 XL; repl. OEM #29900026



## GRIPPER STEP-UP SEAT

- Blends rider and passenger comfort with the ergonomics required to keep the rider locked in place and in control of the bike
- Combines a GelCore™ interior with Ultra-Foam to create a perfect balance of rigidity and user compliance
- The Ultra-Foam's unique molding process creates an element-resistant, self-skinning process that seals the foam from water and enhances the seat's durability as well as comfort
- Gripper lumbar will stick you to the seat
- All mounting hardware and instructions are included for easy installation
- Available with a black SaddleHyde™ cover with black stitching

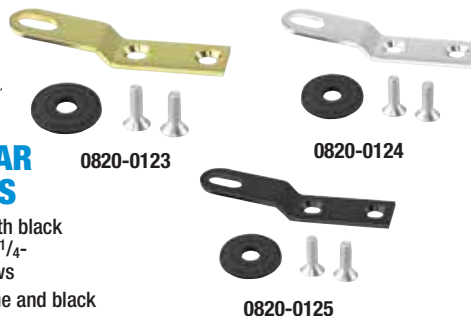


PART #	DESCRIPTION
0810-2142	For 18-20 Scout Bobber



## UNIVERSAL REAR SEAT BRACKETS

- Include seat bracket with black fender washer and two 1/4"-28 x 3/4" flat head screws
- Available in gold, chrome and black



PART #	DESCRIPTION
0820-0123	Gold
0820-0124	Chrome
0820-0125	Black



## GOLD SEAT MOUNTING KNOB

- Billet-style, high-quality knurled knob for attaching the rear mounting tabs of seats to the stock fender
- Use with fender protector washer for a clean, finished look



PART #	DESCRIPTION
0820-0122	1/4"-20



## PISTON KITS

- From Daytona to Bonneville, JE Pistons continues to set the standards in piston design
- JE has recorded wins at Daytona, low ETs on the drag strip and land speed records at Bonneville
- Machined from 2618-T6 high tensile forged aluminum
- Dome/dish features smooth flowing radii; require no deburring or preparation
- JE designs are specifically engineered for extreme applications including professional competition
- Pins, pin locks and rings included

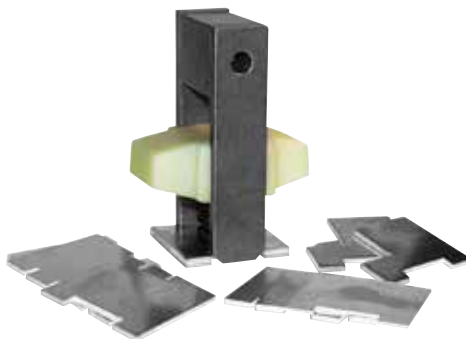


PART #	DISPLACEMENT	BORE	SIZE	COMPRESSION RATIO	WEIGHT (GRAMS)	SKIRT
FOR 07-17 TWIN CAM 96"/103" BORED TO 107" (DOES NOT FIT LIQUID-COOLED HEADS)						
0910-5927	1745cc	3,937"	STD	10,25:1	350	Round
0910-5928	1745cc	3,937"	STD	10,75:1	355	Round
FOR 99-17 TWIN CAM 88"/96" BORED TO 98"						
0910-5936	1595cc	3,937	STD	9,5:1	385	FSR
0910-5937	1595cc	3,937	STD	10,5:1	403	FSR
FOR 99-06 TWIN CAM 88" BORED TO 95"						
0910-5935	1545cc	3,875"	STD	10,5:1	401	FSR

## Hayden ENTERPRISES

### M6 CHAIN TENSIONER

- Automatically adjust the tension of the primary chain
- Provide constant and even tension, which improves gear shifting and reduces noise
- Extend primary chain life



PART #	DESCRIPTION
1120-0416	For 94-00 Big Twin



### DERBY COVER SPACER PLATE FOR USE WITH SCORPION LOW-PROFILE LOCK-UP CLUTCH

- Allows fitment of Scorpion low-profile lock-up clutch PART #s 1130-0299 and 1130-0210 under the stock derby cover
- Not required when using Barnett derby covers, PART #s 1107-0540 or 1107-0541 (sold separately)

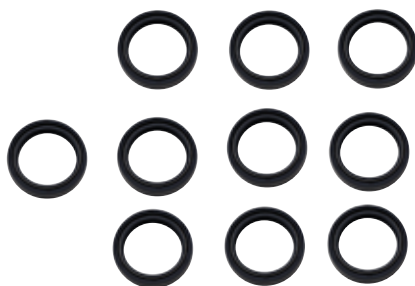


PART #	DESCRIPTION
1107-0632	Derby cover spacer plate



### FORK SEALS

- High-quality replacement components
- Available in dealer packs of ten



0407-0664



0407-0666

PART #	DESCRIPTION	QTY.
0407-0664	For L87-00 FXR, 91-05 FXD, L87-20 XL (w/ 39 mm forks)	10-pk.
0407-0665	For 84-13 FLT/FLHT/FLHR/FLHX/FLTRX/H-D FL Trike, 84-17 FXS/FLS/FXST/FLST, 99-05 FXDWG (w/ 41 mm forks)	10-pk.

PART #	DESCRIPTION	QTY.
0407-0666	For 14-20 FLHT/FLHR/FLHX/FLTRX/H-D FL Trike, 18-20 Softail, 06-17 Dyna Glide, 01-11 V-Rod (w/ 49 mm forks)	10-pk.





## CIRO

Ciro: the name means ruler in Latin. This fast-growing company has moved to the forefront in the custom V-Twin market due to their innovative, exciting and high-quality parts and accessories. Want to add a little (or a lot) of Shock & Awe to your ride? Check out the latest custom lighting options from Ciro.



2040-2484



## MACHETE™ BAG LED LIGHTS

- Function and style in one stealthy package
- Low-profile waterproof housings maintain plenty of ground clearance while cornering
- Smoked, shatterproof, polycarbonate lens with built-in optics
- Red run, turn, and brake LED lights
- Plug-n-Play installation with no drilling
- Some models require additional wiring harness; sold separately
- Available for standard saddlebags
- Sold in pairs



2120-0984

PART #	DESCRIPTION
<b>2040-2484<sup>1</sup></b>	Saddlebag lights for 15-20 FLHXSE, 18-20 FLHRXS, 18-20 FLHXS, 18-20 FLTRXS, 18-20 FLTRXSE models
<b>2120-0983</b>	Wiring harness for 97-98 FLHT/FLHR w/ OEM-style hard saddlebags
<b>2120-0983</b>	Wiring harness for 99-13 FLHT/FLHTK/FLHTCUSE, 99-13 FLHR/FLHRSE (except 08,13), 99-13 FLTR/FLTRU/FLTRUSE, 06-09 FLHX
<b>2120-0984</b>	Wiring harness for 10-13 FLHX/FLTRX

<sup>1</sup> Lights fit other models listed if used with specific wiring harness.



## LED LIGHTED FLAGPOLE

- Let your colors fly day and night
- Built-in white LEDs are powered by any 12V source
- Includes American flag, but can be used with any 15 cm x 23 cm (6" x 9") flag
- No drilling required; mounts sold separately

0521-1772

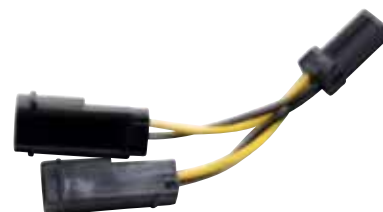


PART #	DESCRIPTION
<b>0521-1772</b>	LED flagpole
<b>0521-1773</b>	12,7 mm (1/2") tube mount
<b>0521-1774</b>	19,1 mm (3/4") tube mount
<b>0521-1775</b>	Antenna mount



## FAIRING POWER Y-HARNESS

- Connects to the fairing power node to add LED effects or other accessories
- Simple plug-in installation



PART #	DESCRIPTION
<b>2120-0985</b>	Y-harness



## 18 CM (7") LED HEADLAMP WITH LED TURN SIGNALS AND CONTROL MODULE

- Snake-eye headlamp with built-in LED turn signals and running light
- Control module allows run/turn function
- Easy to install
- 17 LED bulbs per side
- Convex glass lens and mirrored plastic reflector
- Replaceable LED headlamp bulb sold separately

PART #	DESCRIPTION
<b>2001-2221</b>	18 cm (7") headlamp w/ turn signals





2001-2128



2001-2129

## 18 CM (7") PROBEAM® ADAPTIVE HEADLAMPS

- Features adaptive technology providing maximum light output where you need it most
- Plug-and-play H4 connector
- Polycarbonate lens and die-cast aluminum housing
- 5000K color temperature
- Mounting ring included for 84-13 applications

**NOTE:** 14-20 models require wiring adapters (PART #'s 2120-0647 and 2001-1264) see the 2020 Parts Europe FatBook.

### PART # DESCRIPTION

FOR 14-20 FLHX/FLHXS/FLHXSE/FLHT/FLHTCU/FLHTCUL/FLHTK/FLHTKL/FLHTKSE/FLHR/FLHRS/FLHRSE/FLHTCUTG

**2001-2130**

Black

**2001-2131**

Chrome

FOR 84-13 FLHTC/FLHT/FLHTCU/FLTCU/FLHTK/FLHTCSE/FLHTCUSE/FLHR/FLHRC/FLHRS/FLHRSE, 06-13 FLHX/FLHXSE, 09-13 FLHTCUTG, AND 12-17 FLHXXX

**2001-2128**

Black

**2001-2129**

Chrome



## PROBEAM® LED HALO FOG LIGHTS

- Utilize Cree LEDs to produce a superior beam pattern with a super-bright white LED halo
- Easily mount to 32 mm (1,25") engine guards with ProBEAM® Tube clamps (PART #s 2040-2345 and 2040-2346, sold separately) or require a 8 mm x 1,25 mounting hole
- Plug-and-play wire harness
- 20 watts, 430 lumens
- Short circuit and thermal overload protection
- Measure 81 mm L x 60 mm D (3,2" x 2,36")
- ECE approved
- Sold in pairs

2001-2205



### PART #

FOR 14-20 CHIEF/SPRINGFIELD/ROADMASTER/CHIEFTAIN CLASSIC/CHIEFTAIN ELITE, AND 14-20 CHIEFTAIN/CHIEFTAIN DARK HORSE AND CHIEFTAIN LIMITED

**2001-2205**

Black

**2001-2206**

Chrome



2001-2246



2001-2247

## 11,5 CM (4,5") TRUBEAM LED PASSING LAMPS

- Incorporate halo LED amber turn signals with white LED running lights
- When turn signal is activated white LEDs turn completely off providing greater visibility to the turn signal
- Come with 881 connector for plug-and-play
- 12 white and 12 amber LEDs per halo
- Available in black chrome or chrome
- Sold in pairs

### PART # DESCRIPTION

FOR 14-20 FLHTCU/FLHTCUL/FLHTK/FLHTKL/FLHTKSE/FLHRCUTG/FLHTCUTGSE

**2001-2245**

Black

**2001-2246**

Chrome

FOR 06-13 FLHTC/FLHTCU/FLHTK/FLHTCUSE/FLHTCUTG

**2001-2247**

Black

**2001-2248**

Chrome

FOR 99-05 FLHTC/FLHTK/FLHTCSE/FLHR/FLHTCUTG AND 00-17 FLSTN/FLSTNSE/FLST/C

**2001-2249**

Black

**2001-2250**

Chrome



## REPLACEMENT REAR TURN SIGNAL

- Replacement chrome turn signal assembly (not threaded)
- Signal features an amber lens with a single filament bulb
- Sold individually

### PART # DESCRIPTION

**2020-1815**

For 86 FXR, 86-87 XL 883; repl. OEM #68404-86



2001-2206





## STARTER MOTORS

- Nippondenso starters are assembled from heavy-duty components and tested with state-of-the-art equipment
- Solenoid plunger, return damper and springs are replaced with stronger components
- Clutch shaft and rollers are replaced with precision-ground and hardened parts for longer service life
- All components are assembled with a special lube for starter roller clutch applications
- CNC-machined billet mounting noses are held together with aerospace fasteners
- After assembly, all starters go to a dyno test including hi-low voltage, stall torque, solenoid engagement, amperage draw, load test, maximum rpm and motor impulse wave form
- Starters have a 4,4:1 gear reduction and produce 46% more cranking torque than the stock starter
- The 2,0 kW starter will start any monster motor (for best results, use with Terry battery cables and a battery with 300+ cold cranking amps like the Drag Specialties battery)
- Choose from two finishes: black wrinkle or polished/chrome



2110-1018



2110-1017

### FITS MODEL

2,0 KW FOR BIG DOG

For 05-11 models

### BLACK WRINKLE

2110-1018

### POLISHED/CHROME

2110-1017

<sup>1</sup> Has a raw finish, not polished/chrome.

## 49 MM FORK TUBES

- Fit a wide variety of models
- Chrome, gold or black anodized finish
- Accept all OEM components
- Sold in pairs



0404-0539

0404-0541

0404-0543

### FOR 06-17 FXD/FXDWG MODELS

#### PART # DESCRIPTION

##### HARD CHROME

0404-0539 648 mm (25,50") (FXD); repl. OEM #46605-06

0404-0540 699 mm (27,50") (FXDWG); repl. OEM #46617-06

##### GOLD

0404-0541 648 mm (25,50") (FXD); repl. OEM #46605-06

0404-0542 699 mm (27,50") (FXDWG); repl. OEM #46617-06

##### BLACK ANODIZED

0404-0543 648 mm (25,50") (FXD); repl. OEM #46605-06



0408-0382



0408-0389



## 41 MM BLIND TOP, WIDE GLIDE TRIPLE TREES

- CNC machined from aircraft-quality billet aluminum
- Accepts 41 mm fork tubes
- Offered with or without built-in LED turn signals
- Includes fork tube plugs that allow for a clean, finished look on the top of the triple tree
- Available in a stylish chrome or durable black anodized finish
- Triple trees are pre-drilled to mount the Pro-One Hide Away internal fork stop kits
- Include handlebar dampeners with chrome billet caps, a fork stem, and all the necessary mounting hardware
- Models with LED lights include additional smoked lens covers
- Offered in 0°, 3°, and 5° rake options

**NOTE:** Raked triple trees change the handling characteristics of the motorcycle. Steering geometry must be calculated to determine which degree of rake is most suited for your application. Trees with more than 3° of rake should not be used in stock frame applications.

### PART # DESCRIPTION

#### FOR 84-10 FXST, FXWG AND CUSTOM APPLICATIONS

##### W/O LIGHTS

0408-0386 0° rake, chrome

0408-0387 0° rake, black

0408-0382 3° rake, chrome

0408-0383 3° rake, black

0408-0384 5° rake, chrome

0408-0385 5° rake, black

##### W/ LIGHTS

0408-0388 3° rake, chrome

0408-0389 3° rake, black

0408-0390 5° rake, chrome

0408-0391 5° rake, black



## HYDRAULIC STOPLIGHT SWITCH

- Spade-type switch
- Bakelite insulators, high-conductivity brass terminals and heavy-duty contacts



### PART # DESCRIPTION

2106-0479 For 08-17 FXD; OEM #72026-08A

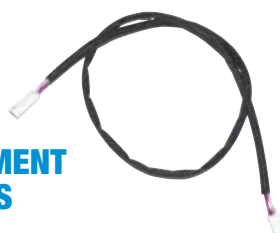


## SPEEDOMETER AND INSTRUMENT WIRING EXTENSION HARNESS

- Used when installing taller bars
- Measures 81 cm (32"), double the length of stock harness

### PART # DESCRIPTION

2120-0986 For 18-20 FXBB/FXBR models





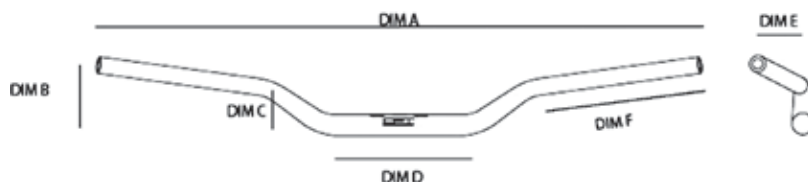
0601-5196



## APPLICATION GUIDE

## 25,4 MM (1") V-TWIN MX HANDLEBAR

- Constructed of 7075-T6 alloy for added strength
- Shot-peened and hard anodized black for improved durability
- Slotted for internal wiring and notched for TBW
- 25,4 mm (1") diameter throughout
- Laser-etched ODI graphics
- Knurled left side helps with grip bar adhesion



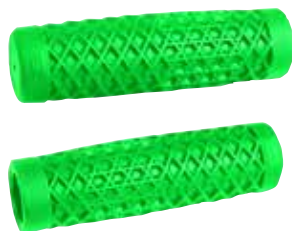
PART #	ODI BEND	A - WIDTH	B - HEIGHT	C - RISE	D - BASE	E - SWEEP	F - CONTROL LENGTH
MX BARS							
0601-5196	V-Twin/Moto 25,4 mm (1")	80,5 cm (31 <sup>3</sup> / <sub>4</sub> ")	12 cm (4 <sup>3</sup> / <sub>4</sub> ")	83 mm (3 <sup>1</sup> / <sub>4</sub> ")	16 cm (6 <sup>1</sup> / <sub>4</sub> ")	54 mm (2 <sup>1</sup> / <sub>8</sub> ")	20,5 cm (8")



0630-2622



0630-2623



0630-2624



0630-2625



0630-2626



## VANS/CULT V-TWIN GRIPS BY ODI

- Feature the classic Vans waffle-sole pattern with a subtle domed center section for improved ergonomics and vibration dampening
- 12,5 cm (5") overall length
- Fit 25,4 mm (1") handlebars
- Sold in pairs

**NOTE:** Throttle sleeve not included.

PART #	DESCRIPTION
0630-2622	Gray
0630-2623	White
0630-2624	Green

PART #	DESCRIPTION
0630-2625	Red
0630-2626	Iridescent purple



2210-0538



2210-0539



2210-0538



2210-0541



## GAUGE BRACKETS

- Mini brackets for single or dual gauges
- Include adapters to fit Drag Specialties 2,4" or Auto Meter's Pro-Cycle 2<sup>5</sup>/<sub>8</sub>" gauges
- CNC-machined from billet aluminum
- For straight riser bars or T-bars

PART #	TYPE
2210-0538	Single mini gauge bracket for either 2,4" or 2 <sup>5</sup> / <sub>8</sub> " dia. gauges on straight bars
2210-0539	Dual mini gauge bracket for either 2,4" or 2 <sup>5</sup> / <sub>8</sub> " dia. gauges on straight bars
2210-0540	Single mini gauge bracket for either 2,4" or 2 <sup>5</sup> / <sub>8</sub> " dia. gauges on 25,4 mm (1") T-Bars
2210-0541	Single mini gauge bracket for either 2,4" or 2 <sup>5</sup> / <sub>8</sub> " dia. gauges on 32 mm (1 <sup>1</sup> / <sub>4</sub> ") T-bars
2210-0542	Single mini gauge bracket for either 2,4" or 2 <sup>5</sup> / <sub>8</sub> " dia. gauges on 38 mm (1 <sup>1</sup> / <sub>2</sub> ") T-bars



## KURYAKYN DILLINGER MIRRORS

- Feature a function-focused design with rugged industrial styling that's built to perform so you can be fully aware of your surroundings
- Convex glass mirror heads enhance overall field of vision
- Mirror heads measure 89 mm x 14 cm (3 1/2" x 5 1/2")
- Aluminum heads and stems styled to match the complete line of Kuryakyn Dillinger products
- Durable aluminum construction
- In silver or satin black finishes
- Machined stainless steel ball and nylon socket for smooth, secure and precise positioning
- Sold in pairs

PART #	DESCRIPTION
0640-1384	Silver
0640-1385	Satin black



## KURYAKYN DILLINGER GRIPS

- Combine a narrow profile with ribbed EPDM rubber for aggressive grip, commanding control and a soft, vibration-dampening foundation to combat forearm fatigue
- Fitments for both dual-cable and electronic throttle H-D models
- Durable ribbed EPDM rubber provides comfortable grip, vibration dampening, and will not harden, crack or wear over time
- Feature aluminum collars and removable end caps for use/installation of bar-end mirrors, turn signals or weights
- Silver or satin black finishes to complement the complete Dillinger collection
- Sold in pairs

PART #	DESCRIPTION
FOR 08-20 FLHT/FLHR/FLTR/FLHX AND H-D FL TRIKE, 16-20 SOFTTAILS, 20 ELW, 16-17 FXDLS, 13-15 FXSBSE, 14-15 FLSTNSE, 11-12 FLTSE	
0630-2592	Silver
0630-2591	Satin black
FOR 96-17 BIG TWIN AND 86-20 XL MODELS (EXCEPT 08-17 FLHT/FLHR/FLTR/FLHX, H-D FL TRIKE, 16-17 SOFTTAILS, 16-17 FXDLS, 13-15 FXSBSE, 14-15 FLSTNSE, 11-12 FLTSE AND MODELS W/ AIR-ASSISTED FORKS)	
0630-2589	Silver
0630-2590	Satin black



## 12-POINT AND OEM-STYLE, POLISHED STAINLESS STEEL CUSTOM TRANSFORMATION KITS

- Customize a bike without having to completely disassemble it
- A dozen groups of polished stainless steel fasteners cover the engine, transmission and the most visible areas of the motorcycle
- Kits add detail and a custom look with ease
- 12-point fastener kits feature Diamond Engineering's dished/flanged washer system
- Kits include fasteners for primary, inner primary, cam and points; oil pump or oil line cover, filter mount sensors, lifter blocks, rocker box, transmission top cover; handlebar clamp, switch housings and master cylinder

PART #	DESCRIPTION
FOR 17-20 FLHT/FLHR/FLHX/FLTRU/FLTRK/FLTRX MODELS	
2401-1144	Original Equipment style (includes 10 visible rocker box bolts)
2401-1149	12-Point (includes 10 visible rocker box bolts)



2401-1144



2401-1149

PART #	DESCRIPTION
FOR 18-20 SOFTTAIL	
2401-1145	Original Equipment style (includes 10 visible rocker box bolts)
2401-1150	12-Point (includes 10 visible rocker box bolts)