

Kite



RACING TEAM REPLICAS ELITE WHEELS

- Racing Team Replica Elite wheels: a very special edition offering replicas of the wheels we normally produce for the best teams that compete in the Motocross World Championship and the AMA National, Supercross and WORCS championships
- They are available in the same colors reserved for teams and at the same price as the standard Elite wheel
- Top-performance components such as Koyo and NSK bearings, Alpina spokes and nipples and Excel Signature rims
- Kite Elite hubs in 6082 aircraft-grade aluminium alloy, made with CNC machining designed to obtain maximum lightness while guaranteeing resistance and reliability

FRONT

FITS MODEL	SIZE	RIM COLOR	HUB COLOR	SPOKE/NIPPLES COLOR	PART #
FANTIC					
XXF 250/450 21-24	1.60" x 21"	Purple	Bronze	Silver	0203-0717
YAMAHA					
YZ 250/450F 14-24	1.60" x 21"	Purple	Bronze	Silver	0203-0717
WR250/450F 21-24	1.60" x 21"	Purple	Bronze	Silver	0203-0717

REAR

FITS MODEL	SIZE	RIM COLOR	HUB COLOR	SPOKE/NIPPLES COLOR	PART #
FANTIC					
XXF 250/450 21-24	1.60" x 21"	Purple	Bronze	Silver	0204-0684
YAMAHA					
YZ 250F 09-24	2.15" x 19"	Purple	Bronze	Silver	0204-0684
YZ 450F 09-24	2.15" x 19"	Purple	Bronze	Silver	0204-0684



DUAL SLIP-ON EXHAUSTS

- Built and assembled in northern Sweden
- All cans and tubes are SS304 stainless steel
- All aluminum parts are CNC-machined from 6061 billet
- Precision TIG-welded with high-quality filler rod; mandrel-bent tubing
- Great power increase
- Includes new inner cores (compatible with current core wrap) along with yellow zinc-plated and stainless steel screws and nuts with lock washers
- APX exhaust made with cast stainless steel intake flanges and EPDM bushings to dampen vibrations
- Fully serviceable

NOTE: All exhausts and mufflers are bolt-on and are made to fit stock vehicles; any aftermarket modifications or additions may affect exhaust fit.



1831-1064



1831-1071

FITS MODEL	PART #
CAN AM	
Defender HD8 16-20	1831-1071
Defender HD10 16-23	1831-1071
POLARIS	
Scrambler 1000S 20-23	1831-1064



1831-1070



1831-1069



1830-0657



1831-1065

SINGLE SLIP-ON APX EXHAUSTS

- Built and assembled in northern Sweden
- Can and tube are SS304 stainless steel
- All aluminum parts are CNC-machined from 6061 billet
- Precision TIG-welded with high-quality filler rod; mandrel-bent tubing
- Great power increase

- Includes new inner cores (compatible with current core wrap), yellow zinc-plated and stainless steel screws and nuts with lock washers
- Cast stainless steel intake flanges
- EPDM bushings to dampen vibration

NOTE: All exhausts and mufflers are bolt-on and are made to fit stock vehicles; any aftermarket modifications or additions may affect exhaust fit

DESCRIPTION	PART #
CF MOTO	
CForce 500 19-20	1831-1070
CForce 520 17/21	1831-1070
CForce 600 20	1831-1070
CForce 625 21-23	1831-1070

DESCRIPTION	PART #
POLARIS	
Sportsman 850/XP 1000 17-23	1831-1069
SEGWAY	
Snarler 600 23	1830-0657 ¹

DESCRIPTION	PART #
YAMAHA	
Grizzly 07-23	1831-1065
Kodiak 16-23	1831-1065

¹ AT6L models require Segway adapter PART #1832-0098 (sold separately).

EXHAUST HEADER

- Header fits all RJCW slip-ons
- Header is made out of 304 stainless steel
- Header is TIG-welded with thick mandrel-bent tubing

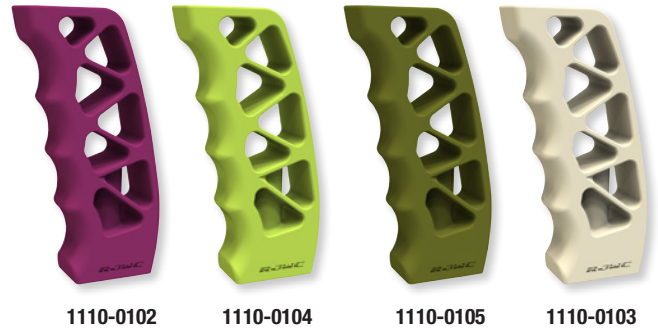


FITS MODELS	PART #
CF MOTO	
CForce 800 XC 18-20	1832-0105

FITS MODELS	PART #
CF MOTO (CONT)	
CForce 850 XC 21-23	1832-0105

FITS MODELS	PART #
CF MOTO (CONT)	
CForce 1000 20-21	1832-0105

RWC POWERSPORTS



SHIFTERS

FOR CAN AM OUTLANDER 500-1000 G2 MODELS 12-23 KROSSFLOW

- Engineered with precision, the handle boasts an M8 thread, ensuring a seamless fit and maximum compatibility with ATVs
- Features anodized accent colors that enhance corrosion resistance
- CNC-machined from billet aluminum; delivers an ergonomic grip and a flawless finish that leaves no detail overlooked

DESCRIPTION	PART #	DESCRIPTION	PART #
KROSSFLOW		KROSSFLOW (CONT)	
Blue	1110-0106	Red	1110-0108
Green	1110-0107	Yellow	1110-0109

SKELETON

- Exceptional resistance to wear, extreme temperatures and harsh conditions
- GFRP shifter handle is designed to seamlessly integrate with your ATV's existing mechanism
- Made from glass-fiber reinforced polymer; handle is lightweight but boasts exceptional strength and stiffness
- Delivers smooth and precise shifting each time

DESCRIPTION	PART #	DESCRIPTION	PART #
SKELETON		SKELETON (CONT)	
Pink Glow	1110-0102	OD Green	1110-0105
Manta Green	1110-0104	Desert Sand	1110-0103



1130-0687



1130-0689

CLUTCH KITS

- Each kit is a comprehensive pre-tuned and versatile setup
- Counteracts the power loss and sluggishness commonly experienced when using larger tires
- Enhances low-end power and torque to make sure you get the needed traction when deep in mud
- Significantly enhances acceleration, particularly at low speeds and midrange
- Provides a noticeable improvement in overall responsiveness
- Ensures a smooth throttle response with quicker backshift
- Effectively reduces belt slippage and minimizes heat generation, safeguarding the longevity of the clutch system

DESCRIPTION	PART #	DESCRIPTION	PART #	DESCRIPTION	PART #
CF MOTO		CF MOTO (CONT)		CF MOTO (CONT)	
CForce 500 16-20	1130-0687	CForce 800 16-20	1130-0688	CForce 1000 20-23	1130-0689



BILLET AIRBOX LIDS

FOR CAN-AM OUTLANDER 500-1000 G2 MODELS (ALL)

- Seals better than factory plastic airbox lid
- Gasket seal is made out of a special silicone rubber that meets the high standards of durability
- CNC-machined from 6061 aluminum billet block
- Black anodized surface
- Works with factory air filters and RJWC Powersports air filter



1011-4766



1011-4767

DESCRIPTION	PART #
Blue	1011-4766

DESCRIPTION	PART #
Red	1011-4767

KROSSFLOW BILLET GAS CAP 2.0

FOR CF MOTO CFORCE 800 18-20, 850 21-23, 1000 20-23, SEGWAY SNARLER 600 23

- Seals better than stock with a nitrile rubber gasket
- CNC-machined from 6061 aluminum in an eye-catching design
- Anodized finish

NOTE: Do not use this tank cap if you are driving with race fuel; Nitrile gasket is not resistant to toluene and xylene.



0520-3931



0520-3932

DESCRIPTION	PART #
Blue	0520-3931

DESCRIPTION	PART #
Red	0520-3932



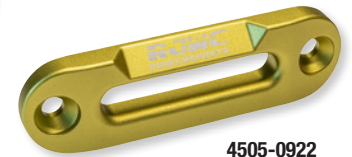
4505-0917



4505-0919



4505-0923



4505-0922

HAWSE FAIRLEAD

NG1

- Made from precision milled 6061 aluminum with a hard anodized finish
- Add a touch of style with the range of striking colors
- Includes hardware for easy installation
- Bolt center-to-center distance is 6"
- Designed for fabric winch lines like UHMWPWE
- Fits most ATV and some UTV models

NG2

- Beefed up version of NG1
- Reliable for the most challenging off-road recoveries
- Made from precision milled 6061 aluminum with a hard anodized finish
- Exceptional durability and longevity
- Designed for fabric winch lines like UHMWPWE
- Includes hardware for easy installation
- Bolt center-to-center distance is 6"
- Fits most ATV and some UTV models

DESCRIPTION	PART #
NG1	
Black	4505-0917
Green	4505-0918

DESCRIPTION	PART #
NG1 (CONT)	
Red	4505-0919
Yellow	4505-0920

DESCRIPTION	PART #
NG2	
Black	4505-0924
Green	4505-0923

DESCRIPTION	PART #
NG2 (CONT)	
Red	4505-0921
Yellow	4505-0922



EVO SERIES GRAPHIC KITS

- Pre-cut kits are printed on durable, scratch-resistant 16-mil Ultracurve® vinyl that is four times thicker than stock
- Special gas tank adhesive and anti-sag tabs
- Includes tank, front and side decals

FITS MODEL	EV020
MC65 21-24	4302-7126

FITS MODEL	EV020	PART #
MC125-450F, EX300-450F 24		4302-7132

FITS MODEL	EV020	FITS MODEL	EV020
MC85 21-24	4302-7127	MC125-450F, EX300-450F 24	4302-7128

TRIM KITS

- This is the biggest bargain in the industry
- You get everything you need to give your bike a fresh new look
- The best part is it's all in one kit that is economical and it all matches
- These kits are an excellent complement to our full-shroud graphic kits, or anyone else's
- Back-printed on scratch-resistant 16-mil vinyl
- Graphics included for front fender, rear fender, upper fork, swingarm and logo stickers



FRONT FENDER KITS

FITS MODEL	PART #
MC125-450F, EX300-450F 24	4302-7133

REAR FENDER KITS

FITS MODEL	PART #
MC125-450F, EX300-450F 24	4302-7134

LOWER FORK GUARD GRAPHICS

FITS MODEL	PART #
MC125-450F, EX300-450F 24	4302-7135

SWINGARM GRAPHICS

FITS MODEL	PART #
MC125-450F, EX300-450F 24	4302-7136



SR2 SERIES SHROUD/AIRBOX GRAPHIC KITS

- Decals for right and left shroud, airbox and tank included (if applicable)
- Officially licensed product
- Made with thick ultracurve vinyl and Moto adhesives

FITS MODEL

SR2

HONDA

CRF250R 22-24, CRF450R 21-24

4302-7100

EVO SERIES GRAPHIC KITS

- Pre-cut kits are printed on durable, scratch-resistant 16-mil Ultracurve® vinyl that is four times thicker than stock
- Special gas tank adhesive and anti-sag tabs
- Includes tank, front and side decals

FITS MODEL

EVO 20

HONDA

CRF250R 22-24

4302-7113

CRF450R 21-24

4302-7113



EVO SERIES GRAPHIC KITS

- Pre-cut kits are printed on durable, scratch-resistant 16-mil Ultracurve® vinyl that is four times thicker than stock
- Special gas tank adhesive and anti-sag tabs
- Includes tank, front and side decals

FITS MODEL

EVO 20

HUSQVARNA

TC 65 17-24

4302-7123

TC 85 18-24

4302-7124

FC 250-450 22.5, TC/FC/TX/FX 125-450 23-24, FE/TE 24

4302-7125

SR2 SERIES SHROUD/AIRBOX GRAPHIC KITS

- Decals for right and left shroud, airbox and tank included (if applicable)
- Officially licensed product
- Made with thick ultracurve vinyl and Moto adhesives

FITS MODEL

SR2

HUSQVARNA

TC 65 17-24

4302-7110

TC 85 18-24

4302-7111

FC 250-450 22.5, TC/FC/TX/FX 125-450 23-24, FE/TE 24

4302-7112



SR2 SERIES SHROUD/AIRBOX GRAPHIC KITS

- Decals for right and left shroud, airbox and tank included (if applicable)
- Officially licensed product
- Made with thick ultracurve vinyl and Moto adhesives

FITS MODEL	SR2
KAWASAKI	
KX250 21-24	4302-7105
KX450 19-23	4302-7105
KX450F 24	4302-7106

EVO SERIES GRAPHIC KITS

- Pre-cut kits are printed on durable, scratch-resistant 16-mil Ultracurve® vinyl that is four times thicker than stock
- Special gas tank adhesive and anti-sag tabs
- Includes tank, front and side decals

FITS MODEL	EVO 20
KAWASAKI	
KX85/112 22-24	4302-7119
KX250F 21-24	4302-7118
KX450F 19-23	4302-7118
KX450F 24	4302-7119

TRIM KITS

- This is the biggest bargain in the industry
- You get everything you need to give your bike a fresh new look
- The best part is, it's all in one kit that is economical and it all matches
- These kits are an excellent complement to our full-shroud graphic kits, or anyone else's
- Back-printed on scratch-resistant 16-mil vinyl
- Graphics included for front fender, rear fender, upper fork, swingarm and logo stickers

FITS MODEL	PART #
KAWASAKI	
KX450F 24	4302-7130



REAR FENDER KIT

FITS MODEL	PART #
KAWASAKI	
KX450F 24	4302-7131



4302-7107



4302-7120

SR2 SERIES SHROUD/AIRBOX GRAPHIC KITS

- Decals for right and left shroud, airbox and tank included (if applicable)
- Officially licensed product
- Made with thick ultracurve vinyl and Moto adhesives

FITS MODEL	SR2
KTM	
SX65 16-24	4302-7107
SX85 18-24	4302-7108
SXF250-450 22.5, SX/SXF125-450 23-24, XC/XCF 23-24, XC-W/XCW-F/EXC 24	4302-7109

EVO SERIES GRAPHIC KITS

- Pre-cut kits are printed on durable, scratch-resistant 16-mil Ultracurve® vinyl that is four times thicker than stock
- Special gas tank adhesive and anti-sag tabs
- Includes tank, front and side decals

FITS MODEL	EVO 20
KTM	
SX50 16-24	4302-7120
SX85 18-24	4302-7121
SXF250-450 22.5, SX/SXF125-450 23-24, XC/XCF 23-24, XC-W/XCW-F/EXC 24	4302-7122



EVO SERIES GRAPHIC KIT

- Pre-cut kits are printed on durable, scratch-resistant 16-mil Ultracurve® vinyl that is four times thicker than stock
- Special gas tank adhesive and anti-sag tabs
- Includes tank, front and side decals

FITS MODEL	EVO 20
SUZUKI	
RMZ250 19-24, RMZ450 18-24	4302-7129



EVO SERIES GRAPHIC KITS

- Pre-cut kits are printed on durable, scratch-resistant 16-mil Ultracurve® vinyl that is four times thicker than stock
- Special gas tank adhesive and anti-sag tabs
- Includes tank, front and side decals

FITS MODEL	EVO 20
YAMAHA	
YZ65 18-24	4302-7114
YZ85 22-24	4302-7115
YZ125/250 22-24	4302-7116
YZ250F 24	4302-7117
YZ450F 23-24	4302-7117

SR2 SERIES SHROUD/AIRBOX GRAPHIC KITS

- Decals for right and left shroud, airbox and tank included (if applicable)
- Officially licensed product
- Made with thick ultracurve vinyl and Moto adhesives

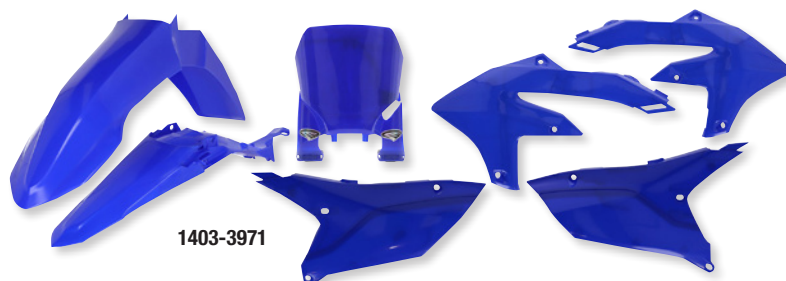
FITS MODEL	SR2
YAMAHA	
YZ65 18-24	4302-7101
YZ85 22-24	4302-7102
YZ125/250 22-24	4302-7103
YZ250F 24, YZ450F 23-24	4302-7104



FIVE-PIECE REPLICA KITS

FOR YAMAHA YZ250F 24, YZ450F 23-24

- Color-matched to OEM or in optional works colors
- Injection-molded plastic for precise fit and finish
- Five-piece replica kit include: front fender, rear fender, radiator scoops, side panels and Stadium number plate

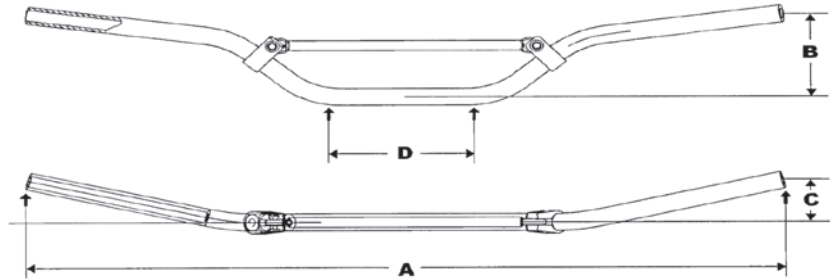


COLOR	PART #	COLOR	PART #	COLOR	PART #	COLOR	PART #
Black	1403-3967	White	1403-3968	Blue	1403-3969	OEM	1403-3971



PRO-BAR OVERSIZE HANDLEBARS AND KITS

- Made from ultra-strong and lightweight 7075-T6 aluminum with taper-wall construction
- 28,6 mm clamping area diameter
- Anodized shot-peened finish
- Laser-etched position grid
- Knurling at left grip area to prevent grip slippage
- Dual sport bars include handlebar pad
- MX/Enduro kits include adapter mounting kit and WRP pad



DESCRIPTION	PART #	DESCRIPTION	PART #	DESCRIPTION	PART #
MEDIUM		HIGH		MX GP REPLICA	
Black	0601-6303	Black	0601-6304	Black	0601-6305

DIMENSIONS

DESCRIPTION	A WIDTH	B HEIGHT	C SWEEP	D BASE	DESCRIPTION	A WIDTH	B HEIGHT	C SWEEP	D BASE
Medium	810 mm	70 mm	60 mm	150 mm	Febvre replica	803 mm	95 mm	150 mm	140 mm
High	805 mm	90 mm	55 mm	145 mm	MX GP Replica	803 mm	95 mm	54 mm	140 mm



PRO-MOUNT ADAPTER MOUNTING KIT

- For installation of 28,6 mm oversized handlebars on stock triple clamps
- CNC-machined aluminum construction
- Complete with all mounting bolts



DESCRIPTION	PART #
Black	0601-6306



MULTI-FIT CLAMP KIT

- Multi-Fit handlebar clamp kit to fit straight 22mm (7/8") handlebar
- Fits handlebars when cable clearance is required
- Easy installation
- Includes kit only (no backbone or plastic guards)



DESCRIPTION	PART #
For straight 22 mm handlebars	0635-2405



0635-2397



0635-2385

EGO HANDGUARDS

- Designed for Enduro and Trail bikes
- To fit tapered handlebar
- Two mounting points secure the full wraparound aluminum design
- Compact curved profile to protect hands and levers during intense trail and tight bush riding
- Heat treated aluminium backbone for maximum strength
- Replaceable, high impact resistant EGO plastic guards included
- Large range of colours
- Deflectors available for increased protection
- Easy installation

Note: Not ideal for bikes with long clutch and brake levers.

COLOR	EGO HANDGUARDS	22 MM	PLASTIC GUARDS
Black	0635-2397	0635-2384	0635-2390
Blue	0635-2398	0635-2385	0635-2391
Green	0635-2399	0635-2386	0635-2392
Orange	0635-2400	-	0635-2393
Red	0635-2401	0635-2387	0635-2394



0635-2392

COLOR	EGO HANDGUARDS	22 MM	PLASTIC GUARDS
White	0635-2402	0635-2388	0635-2395
Yellow	0635-2403	0635-2389	0635-2396
Black with black logo	0635-2410	0635-2406	0635-2408
Hiviz	0635-2411	0635-2407	0635-2409



0635-2342



0635-2345

TWO-POINT BACKBONE HANDGUARD MOUNT KITS

- Custom designed, bike-specific hardware kits for the ideal fit
- Two mounting mounts for a secure, full wraparound design
- Heat-treated aluminum backbone for maximum strength and impact protection
- Compatible with Jet, VPS, Storm, BBZ or Carbon handguards
- Must order mounts and a set handguards for a complete assembly

FITS MODEL	PART #
DUCATI	
Multistrada V2/V2S 21-23	0635-2342
HONDA	
CB750 Hornet 22-23	0635-2345
CL500 23	0635-2404



0635-2341

FITS MODEL	PART #
HONDA (CONT)	
XL750 Transalp 22-23	0635-2343
KTM	
1290 Super Adventure R/S 20-23	0635-2341



0604-0264



0604-0268



0604-0273



0604-0280



0604-0275



See chart for details

STEERING DAMPER MOUNTING KITS

- CNC-machined
- Made of lightweight aluminum
- ABE approved unless noted (see chart)
- Steering damper sold separately; must order both for a complete assembly

FITS MODEL	DESCRIPTION	COLOR	PART #
BMW			
S 1000 XR 15-19	Original place	Black	0604-0264¹
K1200GT 02-05, K1200LT 99-08, K1200RS 97-05	Original place, SD stroke 75	Black	0604-0265¹
R1200 GS LC 13	Under Telelever; cutting of some plastic required, SD stroke 75 (CSC only)	Black	0604-0266¹
R1200RS 15-18	Original place, SD stroke 75 reverse	Black	0604-0267¹
R nine T 14-22 (all)	Original place, SD stroke 75 reverse	Black	0604-0267¹
DUCATI			
Desert X 22-23	Original location, SD stroke 68 reverse	Black	0604-0269¹
Monster 800 S2R 06-08	L/R on frame, SD stroke 140	Gold	0604-0268
Monster 1000 S2R 06-08	L/R on frame, SD stroke 140	Gold	0604-0268
Monster S4 01-03	L/R on frame, SD stroke 140	Gold	0604-0268
Monster 1000 S4R/S4RS 04-08	L/R on frame, SD stroke 140	Gold	0604-0268
HONDA			
Z125 Monkey 18-22	Top/tank, SD stroke 75	Black	0604-0270¹
CB600F Hornet 07-13	Top/tank, SD stroke 75 reverse	Black	0604-0271¹
CBR650F 14-18	Top/tank, SD stroke 75 reverse	Black	0604-0272¹
CBR650R 19-23	Top/tank, SD stroke 75 reverse	Black	0604-0273¹
HUSQVARNA			
Norden 901 22	Original place; cutting in radiator guard necessary, SD stroke 68 reverse	Black	0604-0280¹
KAWASAKI			
Ninja 400 (race kit) 19-23	Mounts under lower triple clamp, SD stroke 75 reverse	Black	0604-0274¹
Z650 17-23	Top/tank, cutting in the plastic is necessary, SD stroke 68	Black	0604-0275¹
Z900RS 18-23	Left on frame, steering lock no longer usable, SD stroke 160	Black	0604-0276¹
H2 (all except H2 SX) 20-23	Top/tank, SD stroke 68	Black	0604-0277¹



0604-0283



0604-0259

FITS MODEL	DESCRIPTION	COLOR	PART #
KTM			
390 Duke 17-23	Left on frame, SD stroke 140	Black	0604-0278¹
790 Duke 18-20	Original place, SD stroke 68 reverse	Black	0604-0279
790 Adventure 19-20	Original place, cutting in radiator guard is necessary, SD stroke 68 reverse	Black	0604-0280¹
890 Duke/ Duke R 20-21	Original place, SD stroke 68 reverse	Black	0604-0279
890 Adventure 21	Original place, cutting in radiator guard is necessary, SD stroke 68 reverse	Black	0604-0280¹
1090 Adventure 17-18	Original place, SD stroke 75 reverse	Black	0604-0281¹
1290 Super Adventure 15-23	Original place, SD stroke 75 reverse	Black	0604-0261¹
1290 Super Duke R 20-21	Original place; CSC damper suggested, SD stroke 75 reverse	Black	0604-0282¹
SUZUKI			
SV650 (except X model) 16-23	Top/tank, SD stroke 68	Black	0604-0283¹
GSX1300R Hayabusa 21	Original place, SD stroke 75	Black	0604-0284¹
YAMAHA			
YZF R6 (race) 17-20	Mounts under lower triple clamp; use with race fairing/setup ONLY, SD stroke 68 reverse	Black	0604-0258¹
		Gold	0604-0259¹
Tenere 700 World Raid 22-23	Original place	Black	0604-0285¹
MT-09/SP 21-23	In front of lower triple clamp; horn relocated to left of the headlight, SD stroke 68 reverse	Black	0604-0286
XSR900 21-22	In front of lower triple clamp; horn relocated to left of the headlight, SD stroke 68 reverse	Black	0604-0286
MT-10 16-23	Original place, SD stroke 75	Black	0604-0287¹
YZF R1 09-16	Original place, SD stroke 75	Black	0604-0287¹
XJR1300 02-14	Under lower triple clamp, SD stroke 75	Black	0604-0288¹

¹ Not ABE approved.



POWERFLOW KITS

2-STROKE/4-STROKE KITS

- 2-stroke kits include a Twin Air filter and a rigid, lightweight, billet aluminum cage that replaces the flimsy plastic stock cage and provides a tight seal to the airbox
- 4-stroke kit replaces the air-restricting stock backfire screen with a special backfire-resistant layer of foam laminated to the inside
- Includes a rigid, lightweight billet aluminum cage
- Replacement air filters available separately in standard and pre-oiled varieties

FITS MODEL	DESCRIPTION	PART #
HUSQVARNA		
TC 125/250, TX 300 23-24	Powerflow kit	1011-4750¹
	Repl. air filter	1011-4749
KTM		
SX 125/250, XC 250/300 23-24	Powerflow kit	1011-4750¹
	Repl. air filter	1011-4749



1011-4750

FITS MODEL	DESCRIPTION	PART #
YAMAHA		
YZF 250 24, YZF 450 23-24	Powerflow kit	1011-4751²
	Repl. air filter	1011-4752
	Pre-oiled repl. air filter	1011-4753

¹ 2-Stroke kit. ² 4-Stroke kit.

AIRBOX/DUST COVERS FOR OFFROAD MOTORCYCLES

AIRBOX COVERS

- Remove the air filter and pressure wash the inside of the airbox by covering the carb inlet with a watertight cap
- Made of PVC with a rubber sealing ring
- Top screw included

GRAND PRIX COVERS

- Fits over the Twin Air filter when riding in severe conditions such as heavy dust and sand
- Filter sock with nylon



1011-4754



1014-0372

FITS MODEL	AIRBOX COVERS	GRAND PRIX DUST COVERS
FANTIC		
XXF 450 24	-	1011-4754
TM RACING		
MX 2-stroke 250 22-23	1014-0372	-
MX 4-stroke 450 22-23	1014-0373	-

FITS MODEL	AIRBOX COVERS	GRAND PRIX DUST COVERS
YAMAHA		
YZ250F 24	-	1011-4754
YZ450F 23-24	-	1011-4754
YZ450FX 24	-	1011-4754
WR450F 24	-	1011-4754



RADIATOR SLEEVE

FOR HONDA CRF 250 R/X 22-24, CRF 450 R/X/WE 21-24

- Fits over the radiator louvers to prevent dirt, sand and mud from clogging the radiator
- Made from nylon-coated glass yarn material
- Easy installation – simply remove the louvers, slide on the sleeve and reinstall on the radiator

DESCRIPTION	PART #
Radiator sleeve	1904-0306



SEAT COVER

FOR YAMAHA YZ250F 24, YZ450F 23-24

- Provides exceptional grip, wet or dry
- Watertight construction
- Perfect replacement for OEM motorcycle seat covers

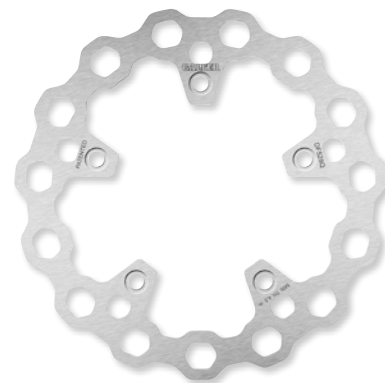
DESCRIPTION	PART #
Seat cover	0821-3576



CUBIQ® BRAKE ROTORS

- Named after the crystal steel molecules, the Cubiq® brake rotor combines state-of-the-art technology with modern design
- Rotor shape promotes uniform brake pad wear - the same contact surface between the pad and disc; every revolution generates regular wear
- Less unsprung weight (up to 40% lighter than standard round rotors) reduces gyroscopic effect and improves the maneuverability of the motorcycle
- Increased perimeter surface design generates more cooling surface around the rotor for better temperature dissipation
- Sold each

NOTE: For maximum braking performance and rotor longevity, Galfer recommends using Galfer brake pads with Galfer rotors. See page ??? for Galfer brake pads.



FITS MODEL	STYLE	PART #
YAMAHA		
XP 530/560 T-MAX 12-23	Rear, fixed	1710-4585



1711-2249



1711-2246



1711-2243



1711-2240



WAVE® ROTORS

- Laser-cut, double-disc ground 420, high carbon stainless steel
- Direct-replacement brake rotors; do not require any extra parts, bolt on just like a stock brake disc
- Full-floating design rotors have an aluminum center carrier
- Improves brake lever feel and modulation
- Rotors cool as they rotate to lower brake operating temperatures

- Design is self-cleaning, removes water as it rotates
- Less tendency to warp
- Sold each

NOTE: For maximum braking performance and rotor longevity, Galfer recommends using Galfer brake pads with Galfer rotors.

OFFROAD

FITS MODEL	TYPE	FRONT ROTOR PART #	TYPE	REAR ROTOR PART #
GASGAS				
MC 85 21-23	Fixed, grooved	1711-2249	-	-
MC 125 09-20	Floating, grooved	1711-2248	-	-
	Floating	1711-2242	Fixed	1711-2246
MC 125 21-23	Floating, grooved	1711-2243	-	-
	Fixed, grooved	1711-2244	-	-
	Fixed	1711-2245	-	-
MC 250 10-15	Floating, grooved	1711-2248	-	-
	Floating	1711-2242	Fixed	1711-2246
MC 250/F 21-23	Floating, grooved	1711-2243	-	-
	Fixed, grooved	1711-2244	-	-
	Fixed	1711-2245	-	-
	Floating	1711-2242	Fixed	1711-2246
MC 350 F 21-23	Floating, grooved	1711-2243	-	-
	Fixed, grooved	1711-2244	-	-
	Fixed	1711-2245	-	-

FITS MODEL	TYPE	FRONT ROTOR PART #	TYPE	REAR ROTOR PART #
GASGAS (CONT)				
MC 450 F 21-23	Floating	1711-2242	Fixed	1711-2246
	Floating, grooved	1711-2243	-	-
	Fixed, grooved	1711-2244	-	-
	Fixed	1711-2245	-	-
EC 125 16-20	Floating	1711-2248	-	-
EC 250 09-20	Floating, grooved	1711-2248	-	-
	Floating	1711-2242	Fixed	1711-2246
	Floating, grooved	1711-2243	-	-
EC 250/F 21-23	Fixed, grooved	1711-2244	-	-
	Fixed	1711-2245	-	-
	Floating, grooved	1711-2248	-	-
EC 300 08-20	Floating, grooved	1711-2248	-	-
	Floating	1711-2242	Fixed	1711-2246
EC 300 21-23	Floating, grooved	1711-2243	-	-
	Fixed, grooved	1711-2244	-	-
	Fixed	1711-2245	-	-

WAVE® ROTORS continued on next page



WAVE® ROTORS (CONT)

OFFROAD (CONT)

FITS MODEL	TYPE	FRONT ROTOR PART #	TYPE	REAR ROTOR PART #
GASGAS (CONT)				
EC 350 F 21-23	Floating	1711-2242	Fixed	1711-2246
	Floating, grooved	1711-2243	-	-
	Fixed, grooved	1711-2244	-	-
	Fixed	1711-2245	-	-
EC 450 F 12-14	Floating, grooved	1711-2248	-	-
HONDA				
CR125R 95-07	Floating	1711-2228	-	-
	Floating, grooved	1711-2229	-	-
	Fixed, grooved	1711-2230	-	-
	Fixed	1711-2231	-	-
CR250R 95-07	Floating	1711-2228	-	-
	Floating, grooved	1711-2229	-	-
	Fixed, grooved	1711-2230	-	-
	Fixed	1711-2231	-	-
CRF250R/X/RX 04-23	Floating	1711-2228	-	-
	Floating, grooved	1711-2229	-	-
	Fixed, grooved	1711-2230	-	-
	Fixed	1711-2231	-	-
CRF450R/X/RX 01-23	Floating	1711-2228	-	-
	Floating, grooved	1711-2229	-	-
	Fixed, grooved	1711-2230	-	-
	Fixed	1711-2231	-	-
HUSQVARNA				
TC 85 14-23	Fixed, grooved	1711-2249	-	-
	Floating	1711-2242	Fixed	1711-2246
TC 125 14-23	Floating, grooved	1711-2243	-	-
	Fixed, grooved	1711-2244	-	-
	Fixed	1711-2245	-	-
TC 250 14-23	Floating	1711-2242	Fixed	1711-2246
	Floating, grooved	1711-2243	-	-
	Fixed, grooved	1711-2244	-	-
	Fixed	1711-2245	-	-
FC 250 14-23	Floating	1711-2242	Fixed	1711-2246
	Floating, grooved	1711-2243	-	-
	Fixed, grooved	1711-2244	-	-
	Fixed	1711-2245	-	-
FC 350 14-23	Floating	1711-2242	Fixed	1711-2246
	Floating, grooved	1711-2243	-	-
	Fixed, grooved	1711-2244	-	-
	Fixed	1711-2245	-	-
FC 450 14-23	Floating	1711-2242	Fixed	1711-2246
	Floating, grooved	1711-2243	-	-
	Fixed, grooved	1711-2244	-	-
	Fixed	1711-2245	-	-
FE 250 14-23	Floating	1711-2242	Fixed	1711-2246
	Floating, grooved	1711-2243	-	-
	Fixed, grooved	1711-2244	-	-
	Fixed	1711-2245	-	-
FE 350 14-23	Floating	1711-2242	Fixed	1711-2246
	Floating, grooved	1711-2243	-	-
	Fixed, grooved	1711-2244	-	-
	Fixed	1711-2245	-	-

FITS MODEL	TYPE	FRONT ROTOR PART #	TYPE	REAR ROTOR PART #
HUSQVARNA (CONT)				
FE 450 14-23	Floating	1711-2242	Fixed	1711-2246
	Floating, grooved	1711-2243	-	-
	Fixed, grooved	1711-2244	-	-
	Fixed	1711-2245	-	-
FE 501 14-23	Floating	1711-2242	Fixed	1711-2246
	Floating, grooved	1711-2243	-	-
	Fixed, grooved	1711-2244	-	-
	Fixed	1711-2245	-	-
TE 125 14-23	Floating	1711-2242	Fixed	1711-2246
	Floating, grooved	1711-2243	-	-
	Fixed, grooved	1711-2244	-	-
	Fixed	1711-2245	-	-
TE 150 22-23	Floating	1711-2242	Fixed	1711-2246
	Floating, grooved	1711-2243	-	-
	Fixed, grooved	1711-2244	-	-
	Fixed	1711-2245	-	-
TE 250/250i 14-23	Floating	1711-2242	Fixed	1711-2246
	Floating, grooved	1711-2243	-	-
	Fixed, grooved	1711-2244	-	-
	Fixed	1711-2245	-	-
TE 300/300i 14-23	Floating	1711-2242	Fixed	1711-2246
	Floating, grooved	1711-2243	-	-
	Fixed, grooved	1711-2244	-	-
	Fixed	1711-2245	-	-
FS 450 17-23	Floating	1711-2242	Fixed	1711-2246
	Floating, grooved	1711-2243	-	-
	Fixed, grooved	1711-2244	-	-
	Fixed	1711-2245	-	-
TX 125 18-23	Floating	1711-2242	Fixed	1711-2246
	Floating, grooved	1711-2243	-	-
	Fixed, grooved	1711-2244	-	-
	Fixed	1711-2245	-	-
KTM				
SX 85 03-24	Fixed, grooved	1711-2249	-	-
SX 105 07-11	Fixed, grooved	1711-2249	-	-
	Floating	1711-2242	Fixed	1711-2246
	Floating, grooved	1711-2243	-	-
SX 125 93-14	Fixed, grooved	1711-2244	-	-
	Fixed	1711-2245	-	-
	Floating	1711-2242	Fixed	1711-2246
SX 144 08	Floating, grooved	1711-2243	-	-
	Fixed, grooved	1711-2244	-	-
	Fixed	1711-2245	-	-
SX 150 19-23	Floating	1711-2242	Fixed	1711-2246
	Floating, grooved	1711-2243	-	-
	Fixed, grooved	1711-2244	-	-
	Fixed	1711-2245	-	-

WAVE® ROTORS continued on next page



WAVE® ROTORS (CONT)

OFFROAD (CONT)

FITS MODEL	TYPE	FRONT ROTOR PART #	TYPE	REAR ROTOR PART #
KTM (CONT)				
SX 200 03-04	Floating	1711-2242	Fixed	1711-2246
	Floating, grooved	1711-2243	-	-
	Fixed, grooved	1711-2244	-	-
	Fixed	1711-2245	-	-
SX 250 03-23	Floating	1711-2242	Fixed	1711-2246
	Floating, grooved	1711-2243	-	-
	Fixed, grooved	1711-2244	-	-
	Fixed	1711-2245	-	-
SX 300 23	Floating	1711-2242	Fixed	1711-2246
	Floating, grooved	1711-2243	-	-
	Fixed, grooved	1711-2244	-	-
	Fixed	1711-2245	-	-
SX 440 94-23	Floating	1711-2242	Fixed	1711-2246
	Floating, grooved	1711-2243	-	-
	Fixed, grooved	1711-2244	-	-
	Fixed	1711-2245	-	-
SX 450 03-23	Floating	1711-2242	Fixed	1711-2246
	Floating, grooved	1711-2243	-	-
	Fixed, grooved	1711-2244	-	-
	Fixed	1711-2245	-	-
SX 500 93-23	Floating	1711-2242	Fixed	1711-2246
	Floating, grooved	1711-2243	-	-
	Fixed, grooved	1711-2244	-	-
	Fixed	1711-2245	-	-
SX 505 07-23	Floating	1711-2242	Fixed	1711-2246
	Floating, grooved	1711-2243	-	-
	Fixed, grooved	1711-2244	-	-
	Fixed	1711-2245	-	-
SX 525 03-23	Floating	1711-2242	Fixed	1711-2246
	Floating, grooved	1711-2243	-	-
	Fixed, grooved	1711-2244	-	-
	Fixed	1711-2245	-	-
SX-F 250 15-23	Floating	1711-2242	Fixed	1711-2246
	Floating, grooved	1711-2243	-	-
	Fixed, grooved	1711-2244	-	-
	Fixed	1711-2245	-	-
SX-F 350 11-23	Floating	1711-2242	Fixed	1711-2246
	Floating, grooved	1711-2243	-	-
	Fixed, grooved	1711-2244	-	-
	Fixed	1711-2245	-	-
SX-F 450 07-23	Floating	1711-2242	Fixed	1711-2246
	Floating, grooved	1711-2243	-	-
	Fixed, grooved	1711-2244	-	-
	Fixed	1711-2245	-	-
EGS 200 99-02	Floating	1711-2242	Fixed	1711-2246
	Floating, grooved	1711-2243	-	-
	Fixed, grooved	1711-2244	-	-
	Fixed	1711-2245	-	-

FITS MODEL	TYPE	FRONT ROTOR PART #	TYPE	REAR ROTOR PART #
KTM (CONT)				
EGS 250 99-23	Floating	1711-2242	Fixed	1711-2246
	Floating, grooved	1711-2243	-	-
	Fixed, grooved	1711-2244	-	-
	Fixed	1711-2245	-	-
EGS 300 93-03	Floating	1711-2242	Fixed	1711-2246
	Floating, grooved	1711-2243	-	-
	Fixed, grooved	1711-2244	-	-
	Fixed	1711-2245	-	-
EGS 400 LC4 94-95	Floating	1711-2242	Fixed	1711-2246
	Floating, grooved	1711-2243	-	-
	Fixed, grooved	1711-2244	-	-
	Fixed	1711-2245	-	-
EXC 125 04-23	Floating	1711-2242	Fixed	1711-2246
	Floating, grooved	1711-2243	-	-
	Fixed, grooved	1711-2244	-	-
	Fixed	1711-2245	-	-
EXC 200 98-23	Floating	1711-2242	Fixed	1711-2246
	Floating, grooved	1711-2243	-	-
	Fixed, grooved	1711-2244	-	-
	Fixed	1711-2245	-	-
EXC 250 04-23	Floating	1711-2242	Fixed	1711-2246
	Floating, grooved	1711-2243	-	-
	Fixed, grooved	1711-2244	-	-
	Fixed	1711-2245	-	-
EXC 300 04-23	Floating	1711-2242	Fixed	1711-2246
	Floating, grooved	1711-2243	-	-
	Fixed, grooved	1711-2244	-	-
	Fixed	1711-2245	-	-
EXC 400 04-23	Floating	1711-2242	Fixed	1711-2246
	Floating, grooved	1711-2243	-	-
	Fixed, grooved	1711-2244	-	-
	Fixed	1711-2245	-	-
EXC 450 04-23	Floating	1711-2242	Fixed	1711-2246
	Floating, grooved	1711-2243	-	-
	Fixed, grooved	1711-2244	-	-
	Fixed	1711-2245	-	-
EXC 500 14-23	Floating	1711-2242	Fixed	1711-2246
	Floating, grooved	1711-2243	-	-
	Fixed, grooved	1711-2244	-	-
	Fixed	1711-2245	-	-
EXC 525 04-23	Floating	1711-2242	Fixed	1711-2246
	Floating, grooved	1711-2243	-	-
	Fixed, grooved	1711-2244	-	-
	Fixed	1711-2245	-	-
EXC 625 03-23	Floating	1711-2242	Fixed	1711-2246
	Floating, grooved	1711-2243	-	-
	Fixed, grooved	1711-2244	-	-
	Fixed	1711-2245	-	-

WAVE® ROTORS continued on next page



WAVE® ROTORS (CONT)

OFFROAD (CONT)

FITS MODEL	TYPE	FRONT ROTOR PART #	TYPE	REAR ROTOR PART #
KTM (CONT)				
EXC-F 250 15-23	Floating	1711-2242	Fixed	1711-2246
	Floating, grooved	1711-2243	-	-
	Fixed, grooved	1711-2244	-	-
	Fixed	1711-2245	-	-
EXC-F 300 19-22	Floating	1711-2242	Fixed	1711-2246
	Floating, grooved	1711-2243	-	-
	Fixed, grooved	1711-2244	-	-
	Fixed	1711-2245	-	-
EXC-F 350 12-23	Floating	1711-2242	Fixed	1711-2246
	Floating, grooved	1711-2243	-	-
	Fixed, grooved	1711-2244	-	-
	Fixed	1711-2245	-	-
EXC-F 450 17-23	Floating	1711-2242	Fixed	1711-2246
	Floating, grooved	1711-2243	-	-
	Fixed, grooved	1711-2244	-	-
	Fixed	1711-2245	-	-
EXC-F 500 17-23	Floating	1711-2242	Fixed	1711-2246
	Floating, grooved	1711-2243	-	-
	Fixed, grooved	1711-2244	-	-
	Fixed	1711-2245	-	-
XC 85 03-10	Fixed, grooved	1711-2249	-	-
XC 105 07-09	Fixed, grooved	1711-2249	-	-
XC 150 10-23	Floating	1711-2242	Fixed	1711-2246
	Floating, grooved	1711-2243	-	-
	Fixed, grooved	1711-2244	-	-
	Fixed	1711-2245	-	-
XC 250 06-23	Floating	1711-2242	Fixed	1711-2246
	Floating, grooved	1711-2243	-	-
	Fixed, grooved	1711-2244	-	-
	Fixed	1711-2245	-	-
XC 300 06-23	Floating	1711-2242	Fixed	1711-2246
	Floating, grooved	1711-2243	-	-
	Fixed, grooved	1711-2244	-	-
	Fixed	1711-2245	-	-
XC 450 06-23	Floating	1711-2242	Fixed	1711-2246
	Floating, grooved	1711-2243	-	-
	Fixed, grooved	1711-2244	-	-
	Fixed	1711-2245	-	-
XC 530 08-23	Floating	1711-2242	Fixed	1711-2246
	Floating, grooved	1711-2243	-	-
	Fixed, grooved	1711-2244	-	-
	Fixed	1711-2245	-	-
XC-W 150 19-23	Floating	1711-2242	Fixed	1711-2246
	Floating, grooved	1711-2243	-	-
	Fixed, grooved	1711-2244	-	-
	Fixed	1711-2245	-	-

SCOOTER

FITS MODEL	TYPE	FRONT ROTOR PART #	TYPE	REAR ROTOR PART #
YAMAHA				
T-MAX 04-20	Fixed	1710-4586	-	-

FITS MODEL	TYPE	FRONT ROTOR PART #	TYPE	REAR ROTOR PART #
KTM (CONT)				
XC-W 250 06-23	Floating	1711-2242	Fixed	1711-2246
	Floating, grooved	1711-2243	-	-
	Fixed, grooved	1711-2244	-	-
	Fixed	1711-2245	-	-
XC-W 300 06-23	Floating	1711-2242	Fixed	1711-2246
	Floating, grooved	1711-2243	-	-
	Fixed, grooved	1711-2244	-	-
	Fixed	1711-2245	-	-
XC-W 530 08-23	Floating	1711-2242	Fixed	1711-2246
	Floating, grooved	1711-2243	-	-
	Fixed, grooved	1711-2244	-	-
	Fixed	1711-2245	-	-
XC-F 250 06-23	Floating	1711-2242	Fixed	1711-2246
	Floating, grooved	1711-2243	-	-
	Fixed, grooved	1711-2244	-	-
	Fixed	1711-2245	-	-
XC-F 350 11-23	Floating	1711-2242	Fixed	1711-2246
	Floating, grooved	1711-2243	-	-
	Fixed, grooved	1711-2244	-	-
	Fixed	1711-2245	-	-
SUZUKI				
RM 85 05-23	Fixed, grooved	1711-2239	-	-
	Fixed	1711-2240	-	-
YAMAHA				
YZ80/85 93-23	Fixed, grooved	1711-2239	-	-
	Fixed	1711-2240	-	-
YZ125 22-23	Floating	1711-2232	Fixed	1711-2241
	Floating, grooved	1711-2233	-	-
	Fixed, grooved	1711-2234	-	-
	Fixed	1711-2235	-	-
YZ250/F 22-23	Floating	1711-2232	Fixed	1711-2241
	Floating, grooved	1711-2233	-	-
	Fixed, grooved	1711-2234	-	-
	Fixed	1711-2235	-	-
YZ450F 20-22	Floating	1711-2232	Fixed	1711-2241
	Floating, grooved	1711-2233	-	-
	Fixed, grooved	1711-2234	-	-
	Fixed	1711-2235	-	-
WR250F 17-23	Floating	1711-2232	-	-
	Floating, grooved	1711-2233	-	-
	Fixed, grooved	1711-2234	-	-
	Fixed	1711-2235	-	-
WR450F 20-23	Floating	1711-2232	-	-
	Floating, grooved	1711-2233	-	-
	Fixed, grooved	1711-2234	-	-
	Fixed	1711-2235	-	-

FITS MODEL	TYPE	FRONT ROTOR PART #	TYPE	REAR ROTOR PART #
YAMAHA (CONT)				
T-MAX 04-20 (CONT)	Floating	1710-4587	-	-

¹ ABE approved.

GALFER
 PERFORMANCE BRAKING SYSTEMS


1721-3522



1721-3563



1721-3534



GALFER BRAKE PADS

SEMI-METALLIC SCOOTER (G1050)

- Designed to produce excellent performance for small and medium-sized machines
- Strong, consistent stopping power in all weather conditions

SINTERED METAL SCOOTER (G1380)

- Designed as a specific replacement for maxi-scooters
- Strong, powerful brake performance
- Resists high temperatures and won't fade under repeated hard use
- Suitable for use in all weather conditions

SEMI-METALLIC CARBON (G1054)

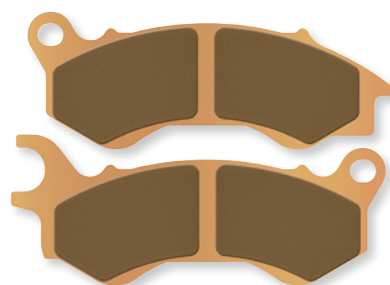
- Great feel and modulation for OEM brake pad replacement
- Long-lasting brake pad and very little rotor wear
- Good in wet and/or dry conditions
- Overall a very versatile brake pad compound for almost every need
- GG Rated

HH SINTERED (G1370/1371)

- For moderately aggressive everyday or sport street riding
- Advanced ceramic composites ready to withstand higher temperatures than regular semi-metallic carbon brake pads
- HH friction-rated compounds deliver excellent feel and modulation
- Great heat recovery and easy on rotor discs
- Developed for aggressive street riding and sport touring, great choice for heavier street bikes

STREET

FITS MODEL	COMPOUND TYPE	FRONT PAD PART #	COMPOUND TYPE	REAR PAD PART #
AKT				
CR5 180 15-	HH sintered	1721-3519	-	-
APRILIA				
SX50 10-16	Sintered	1721-3524	Semi-metallic	1721-3513
Tuono 125 16-	-	-	Semi-metallic	1721-3516
	-	-	Semi-metallic carbon	1721-3540
RSV4 1000 RR 20	-	-	Semi-metallic carbon	1721-3558
CF MOTO				
NK 400 20-	HH sintered	1721-3520	-	-
NK 650 13-	HH sintered	1721-3520	-	-
NK 650 MT Adventure Tourer 20-	HH sintered	1721-3520	-	-
GT 650 20-	HH sintered	1721-3520	-	-
MT 650 20-	HH sintered	1721-3520	-	-
MT 700 22-	HH sintered	1721-3520	-	-



1721-3528



1721-3526

HH SINTERED (G1396/1397)

- Advanced ceramic brake pad composites ready to withstand higher temperatures than regular semi-metallic carbon brake pads
- HH friction-rated compounds deliver excellent feel and modulation
- Developed for varying conditions
- Very aggressive brake pad with good initial bite and lasting power

HH SINTERED CERAMIC (G1375)

- For moderately aggressive every day and sport street riding
- Ceramic-coated backing plate to assist with temperature management and dissipate heat
- Advanced ceramic composites ready to withstand higher temperatures than regular semi-metallic carbon brake pads
- HH friction-rated compounds deliver excellent feel and modulation
- Capable of handling almost any type of riding you throw at them
- Brake pads do not fade
- Performance street, track days, canyon riding, amateur racing

FITS MODEL	COMPOUND TYPE	FRONT PAD PART #	COMPOUND TYPE	REAR PAD PART #
HONDA				
CB 125 F 15-16	HH sintered ceramic	1721-3511	-	-
CB 350 RS 21-	HH sintered	1721-3520	-	-
CB 400 F/X 13-	HH sintered	1721-3520	-	-
CB 500 F/X 13-22	HH sintered	1721-3520	-	-
CB 650 F 14-	HH sintered	1721-3520	-	-
CBR 300 R 14-	HH sintered	1721-3520	-	-
CBR 500 R 15-21	HH sintered	1721-3520	-	-
CBR 650 F 14-	HH sintered	1721-3520	-	-
CL 500 22-	HH sintered	1721-3520	-	-
CMX Rebel 300 18	HH sintered	1721-3520	-	-
CMX Rebel 500 18-	HH sintered	1721-3520	-	-
CTX 700 13-	HH sintered	1721-3520	-	-
NC 700/750 S/X 14-	HH sintered	1721-3520	-	-

GALFER BRAKE PADS continued on next page



GALFER BRAKE PADS (CONT)

STREET (CONT)

FITS MODEL	COMPOUND TYPE	FRONT PAD PART #	COMPOUND TYPE	REAR PAD PART #
HYOSUNG				
GT 125/250 Pi 13-	HH sintered	1721-3522	HH sintered	1721-3522
GT650 Pi 13-	-	-	HH sintered	1721-3522
KAWASAKI				
Ninja 250 08-12	HH sintered ceramic	1721-3511	HH sintered ceramic	1721-3511
Ninja 300 13-	-	-	HH sintered ceramic	1721-3511
Ninja 400 18-24	-	-	HH sintered ceramic	1721-3511
Ninja 500 24	-	-	HH sintered ceramic	1721-3511
Ninja 650 17-24	HH sintered	1721-3520	-	-
Ninja H2 SX/SXE/SX SE 18-	-	-	Semi-metallic carbon	1721-3543
Z125 19-24	HH sintered ceramic	1721-3511	HH sintered ceramic	1721-3511
Z250 15-	HH sintered ceramic	1721-3511	HH sintered ceramic	1721-3511
Z300 15-	HH sintered ceramic	1721-3511	HH sintered ceramic	1721-3511
Z400 20-24	-	-	HH sintered ceramic	1721-3511
Z500 24	-	-	HH sintered ceramic	1721-3511
Z650 17-	HH sintered	1721-3520	-	-
Z650 RS 20-	HH sintered	1721-3520	-	-
Z H2 20-	-	-	Semi-metallic carbon	1721-3543
Versys X 300 18-24	HH sintered	1721-3520	HH sintered ceramic	1721-3511
Versys 650 15-	HH sintered	1721-3520	-	-
KLR650 21-24	HH sintered	1721-3520	HH sintered ceramic	1721-3511
W800 19-24	-	-	HH sintered ceramic	1721-3511
MOTO GUZZI				
V7 Classic Cafe 09-	-	-	Semi-metallic carbon	1721-3556
V7 Racer 750 11-	-	-	Semi-metallic carbon	1721-3556
V7 Scrambler 750 12-	-	-	Semi-metallic carbon	1721-3556
V7 III 750 17-	-	-	Semi-metallic carbon	1721-3556
V85 Strada/TT 850 19-	-	-	Semi-metallic carbon	1721-3556
MV AGUSTA				
RR Brutale 1090/R/RR/B-4/Corsa 13-	-	-	HH sintered	1721-3551

OFFROAD

FITS MODEL	COMPOUND TYPE	FRONT PAD PART #	COMPOUND TYPE	REAR PAD PART #
BETA				
REV 3 80/125/200/250/270 04-08	-	-	Semi-metallic carbon	1721-3563
REV 4T 250 07-08	-	-	Semi-metallic carbon	1721-3563
EVO 125/250 2T/300 2T/300 4T	Semi-metallic	1721-3547	-	-
EVO 80 Junior 09-	-	-	Semi-metallic carbon	1721-3563
RR 390/430/480 15-	-	-	Semi-metallic carbon	1721-3564

FITS MODEL	COMPOUND TYPE	FRONT PAD PART #	COMPOUND TYPE	REAR PAD PART #
ROYAL ENFIELD				
Bullet Classic, Clubman, EFI, EFI Deluxe, Kit ES, Trail 09-	Semi-metallic carbon	1721-3543	-	-
SUZUKI				
GSX 250 R 17-	HH sintered	1721-3520	-	-
V-Strom 250 17-	HH sintered	1721-3520	-	-
V-Strom DE 800 23-	HH sintered	1721-3520	-	-
TRIUMPH				
Bonneville Bobber 1200 17	HH sintered	1721-3520	-	-
Scrambler 1200 X 24	HH sintered	1721-3520	-	-
Street Cup 900 17-	HH sintered	1721-3520	HH sintered ceramic	1721-3511
Street Scrambler 900 17-18	HH sintered	1721-3520	-	-
Street Triple S 765 17-	HH sintered	1721-3520	-	-
Street Twin 900 16-18	HH sintered	1721-3520	-	-
T-100/Black 17-	HH sintered	1721-3520	-	-
T-120/Black 16-	HH sintered	1721-3520	-	-
Thrupton 1200 16-	HH sintered	1721-3520	HH sintered ceramic	1721-3511
Tiger 660 Sport 22-	HH sintered	1721-3520	-	-
Tiger 800 11-18	HH sintered	1721-3520	-	-
Tiger 1200/Tiger Explorer 16-21	-	-	Semi-metallic carbon	1721-3543
Trident 660 22-	HH sintered	1721-3520	-	-
YAMAHA				
MT 125 14-19	-	-	HH sintered	1721-3533
SR 400 14-	Semi-metallic	1721-3517	-	-
	Sintered	1721-3523	-	-
SCR 950 17-	Semi-metallic	1721-3517	-	-
	Sintered	1721-3523	-	-
XVS 950 Bolt 13-23	Semi-metallic	1721-3517	-	-
	Sintered	1721-3523	-	-
XVS 950 Midnight Star 09-	Semi-metallic	1721-3517	-	-
YZF-R 125 08-17	-	-	HH sintered	1721-3533

FITS MODEL	COMPOUND TYPE	FRONT PAD PART #	COMPOUND TYPE	REAR PAD PART #
BETA (CONT)				
RR Enduro 50/125/200 08-20	Sintered	1721-3524	Semi-metallic carbon	1721-3564
BETA (CONT)				
RR Enduro 125/200 20-	-	-	Semi-metallic carbon	1721-3564
RX 300 24	-	-	Semi-metallic carbon	1721-3564
ALP X 300 24	Sintered	1721-3524	-	-
ALP X 350 24	-	-	Semi-metallic carbon	1721-3564

GALFER BRAKE PADS continued on next page



GALFER BRAKE PADS (CONT)

OFFROAD (CONT)

FITS MODEL	COMPOUND TYPE	FRONT PAD PART #	COMPOUND TYPE	REAR PAD PART #
BETA (CONT)				
X-Trainer 250 18-	-	-	Semi-metallic carbon	1721-3564
X-Trainer 300 15-	-	-	Semi-metallic carbon	1721-3564
GASGAS				
MC 50/65 06-20	-	-	Semi-metallic carbon	1721-3559
Trial GP 125/250/280/300 19-	Semi-metallic carbon	1721-3547	Semi-metallic carbon	1721-3559
TXT Racing/Pro Racing 80/125/250/280/300 19-	Semi-metallic carbon	1721-3547	Semi-metallic carbon	1721-3559

SCOOTER

FITS MODEL	COMPOUND TYPE	FRONT PAD PART #	COMPOUND TYPE	REAR PAD PART #
BENELLI				
Civitas 125 20-	Semi-metallic	1721-3515	-	-
BMW				
C 650 Sport 19-	HH sintered	1721-3520	HH sintered	1721-3520
CF MOTO				
E-Charm 125/150 10-	-	-	Semi-metallic carbon	1721-3557
HONDA				
NSC 50 13-	Sintered	1721-3528	-	-
Vision 50 12-	Sintered	1721-3528	-	-
SCV 110 Lead	Semi-metallic	1721-3512	-	-
Vision 110 11-18	Sintered	1721-3528	-	-
Forza 125/350 15-	HH sintered	1721-3520	-	-
HONDA (CONT)				
PCX 125/150 10-17	Sintered	1721-3528	-	-
SH 125 13-18	Sintered	1721-3528	-	-
KYMCO				
Like 50/125/150 17-	Sintered	1721-3528	-	-
Nexxon 50/125 07-08	Semi-metallic	1721-3512	-	-
Agility Carry/City 125 18-	Sintered	1721-3528	-	-
Dink 125 X 22-	Sintered	1721-3525	-	-
Downtown 125/350 15-	Sintered	1721-3525	-	-
K-XCT 125 15-	Sintered	1721-3525	Sintered	1721-3549
Miller 125 19-	Sintered	1721-3528	-	-
New Downton 125 16-	Sintered	1721-3525	-	-
People 125/150 17-	Semi-metallic carbon	1721-3543	-	-
Super Dink 125i 18-	-	-	Sintered	1721-3549

FITS MODEL	COMPOUND TYPE	FRONT PAD PART #	COMPOUND TYPE	REAR PAD PART #
HONDA				
NX 500 24	HH sintered	1721-3520	-	-
KTM				
SX 450 08-	HH sintered	1721-3534	HH sintered	1721-3555
SX 505 08-	HH sintered	1721-3534	HH sintered	1721-3555
XC 450 08-	HH Sintered	1721-3534	HH sintered	1721-3555
XC 525 08-	HH Sintered	1721-3534	HH sintered	1721-3555
SHERCO				
ST 250/290/300/305	-	-	Semi-metallic	1721-3559

FITS MODEL	COMPOUND TYPE	FRONT PAD PART #	COMPOUND TYPE	REAR PAD PART #
KYMCO (CONT)				
X Town 125/300 15-	Sintered	1721-3525	-	-
Agility Maxi 300 15-	Sintered	1721-3525	-	-
K-XCT 300i 12-	Sintered	1721-3525	Sintered	1721-3549
Xciting 400 12-	-	-	HH sintered	1721-3520
LAMBRETTA				
X 125/300 22-	Semi-metallic carbon	1721-3543	-	-
PIAGGIO				
MP3 300/500/530 15-23	Semi-metallic	1721-3535	-	-
Vespa 946/946 Red 13-	-	-	Semi-metallic	1721-3535
SUZUKI				
UH 125/250 Burgman 14-	HH sintered	1721-3511	-	-
SYM				
Cruisym 125/300 18-	HH sintered	1721-3552	-	-
Joymax 125 15-	HH sintered	1721-3552	-	-
VF 185 19-	Semi-metallic	1721-3515	-	-
Wolf SB 125/300 15-	-	-	HH sintered	1721-3533
Wolf SB 250 Ni 15-	Sintered	1721-3530	HH sintered	1721-3533
ADX 300 24	Sintered	1721-3530	HH sintered	1721-3533
Max SYM 400/508/600 11-24	Sintered	1721-3530	Sintered	1721-3550
ADXTG 400 24	Sintered	1721-3530	HH sintered	1721-3533
YAMAHA				
Delight 125 14-	Semi-metallic	1721-3518	-	-
	Sintered	1721-3531	-	-
Majesty S 125 15-	Sintered	1721-3527	-	-

GALFER BRAKE PADS continued on next page



GALFER BRAKE PADS (CONT)



SCOOTER (CONT)

FITS MODEL	COMPOUND TYPE	FRONT PAD PART #	COMPOUND TYPE	REAR PAD PART #
YAMAHA (CONT)				
N Max 125/150/155 15-	Semi-metallic	1721-3518	-	-
	Sintered	1721-3531	-	-
X-Enter 125-150 12-	Sintered	1721-3529	-	-
X Max 125/250 05-09	Sintered	1721-3527	-	-
X Max 125/250/400 10-17	HH sintered	1721-3520	-	-
X Max 400 18-	-	-	Sintered	1721-3549

ATV

FITS MODEL	COMPOUND TYPE	FRONT PAD PART #	COMPOUND TYPE	REAR PAD PART #
KAWASAKI				
KVF 300 13-	HH sintered	1721-3533	HH sintered	1721-3533
KYMCO				
MAXXER 250/300 06-	-	-	Sintered	1721-3526
MXU 250/300 05-	-	-	Sintered	1721-3526

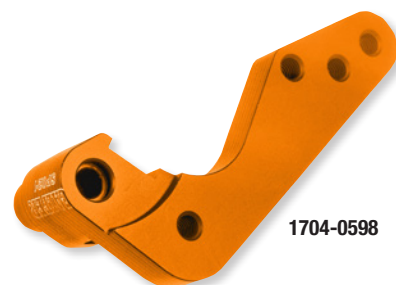
FITS MODEL	COMPOUND TYPE	FRONT PAD PART #	COMPOUND TYPE	REAR PAD PART #
YAMAHA (CONT)				
XP 500 T-Max 00-03	Semi-metallic	1721-3517	Semi-metallic	1721-3548
XP 500 T-Max Cup 03-	Semi-metallic	1721-3514	Semi-metallic	1721-3548
XP 530/560 T-Max 12-	-	-	Semi-metallic	1721-3548
YS 125 17-	Semi-metallic	1721-3518	-	-
	Sintered	1721-3531	-	-
YW 125 Zuma 18-	HH sintered	1721-3520	-	-

FITS MODEL	COMPOUND TYPE	FRONT PAD PART #	COMPOUND TYPE	REAR PAD PART #
KYMCO (CONT)				
Urban Quad 250 06-	-	-	Sintered	1721-3526
YAMAHA				
YFM 700 R Raptor 13-	-	-	Semi-metallic carbon	1721-3560

BRAKE CALIPER RELOCATION BRACKETS

- Brake Caliper Adapter for oversize Brake Discs
- Anodized Aluminium

FITS MODEL	SIZE	COLOR	PART #
GASGAS			
MC125 21-23	270 mm	Orange	1704-0598
	280 mm	Black	1704-0604
MC250/250F 21-23	270 mm	Orange	1704-0598
	280 mm	Black	1704-0604
MC350F 22-23	270 mm	Orange	1704-0598
	280 mm	Black	1704-0604
MC450F 22-23	270 mm	Orange	1704-0598
	280 mm	Black	1704-0604
EC250/300 18-20	270 mm	Black	1704-0597
HONDA			
CRF 250 R 15-17	270 mm	Black	1704-0599
CRF 250 R/RX 19-23	280 mm	Black	1704-0605
CRF 450 R/RX 15-18	270 mm	Black	1704-0599
CRF 450 R/RX 19-23	280 mm	Black	1704-0605
HUSQVARNA			
TC85 14-20	260 mm	Black	1704-0606



1704-0598

FITS MODEL	SIZE	COLOR	PART #
HUSQVARNA (CONT)			
TC125 14-24	270 mm	Orange	1704-0598
	280 mm	Black	1704-0604
TC250 14-24	270 mm	Orange	1704-0598
	280 mm	Black	1704-0604
FC250 14-24	270 mm	Orange	1704-0598
	280 mm	Black	1704-0604
FC350 14-24	270 mm	Orange	1704-0598
	280 mm	Black	1704-0604
FC450 14-24	270 mm	Orange	1704-0598
	280 mm	Black	1704-0604
FE250 14-22	270 mm	Orange	1704-0598
	280 mm	Black	1704-0604
FE350/350S 14-24	270 mm	Orange	1704-0598
	280 mm	Black	1704-0604
FE450 15-24	270 mm	Orange	1704-0598
	280 mm	Black	1704-0604

BRAKE CALIPER RELOCATION BRACKETS continued on next page



BRAKE CALIPER RELOCATION BRACKETS (CONT)

FITS MODEL	SIZE	COLOR	PART #
HUSQVARNA (CONT)			
FE501/501S 14-24	270 mm	Orange	1704-0598
	280 mm	Black	1704-0604
TE125 14-16	270 mm	Orange	1704-0598
	280 mm	Black	1704-0604
TE150/150i 17-24	270 mm	Orange	1704-0598
	280 mm	Black	1704-0604
TE250/250i 14-22	270 mm	Orange	1704-0598
	280 mm	Black	1704-0604
TE300/300i 14-24	270 mm	Orange	1704-0598
	280 mm	Black	1704-0604
FX350 17-24	270 mm	Orange	1704-0598
	280 mm	Black	1704-0604
HUSQVARNA (CONT)			
FX450 17-24	270 mm	Orange	1704-0598
	280 mm	Black	1704-0604
TX125 17	270 mm	Orange	1704-0598
	280 mm	Black	1704-0604
TX300/300i 17-22	270 mm	Orange	1704-0598
	280 mm	Black	1704-0604
KAWASAKI			
KX125 95-02	270 mm	Black	1704-0596
KX250/F 94-14	270 mm	Black	1704-0596
KX250/F/X 06-23	280 mm	Black	1704-0603
KX450F 07-14	270 mm	Black	1704-0596
KX450F 07-19	280 mm	Black	1704-0603
KX500 95-04	270 mm	Black	1704-0596
KLX450R 08-12	280 mm	Black	1704-0603
KTM			
SX 85 12-20	260 mm	Black	1704-0606
	270 mm	Orange	1704-0598
SX 125 09-24	280 mm	Black	1704-0604
	270 mm	Orange	1704-0598
SX 250 09-24	280 mm	Black	1704-0604
	270 mm	Orange	1704-0598
SX 300 09-24	280 mm	Black	1704-0604
	270 mm	Orange	1704-0598
SX-F 250 09-24	280 mm	Black	1704-0604
	270 mm	Orange	1704-0598
SX-F 350 10-24	280 mm	Black	1704-0604
	270 mm	Orange	1704-0598
SX-F 450 09-24	280 mm	Black	1704-0604
	270 mm	Orange	1704-0598
EXC 450 10-14	280 mm	Black	1704-0604
	270 mm	Orange	1704-0598
EXC 500 10-16	280 mm	Black	1704-0604
	270 mm	Orange	1704-0598
EXC 530 10-12	280 mm	Black	1704-0604
	270 mm	Orange	1704-0598
EXC-F 250 17-19	280 mm	Black	1704-0604
	270 mm	Orange	1704-0598
EXC-F 350 12-24	280 mm	Black	1704-0604
	270 mm	Orange	1704-0598

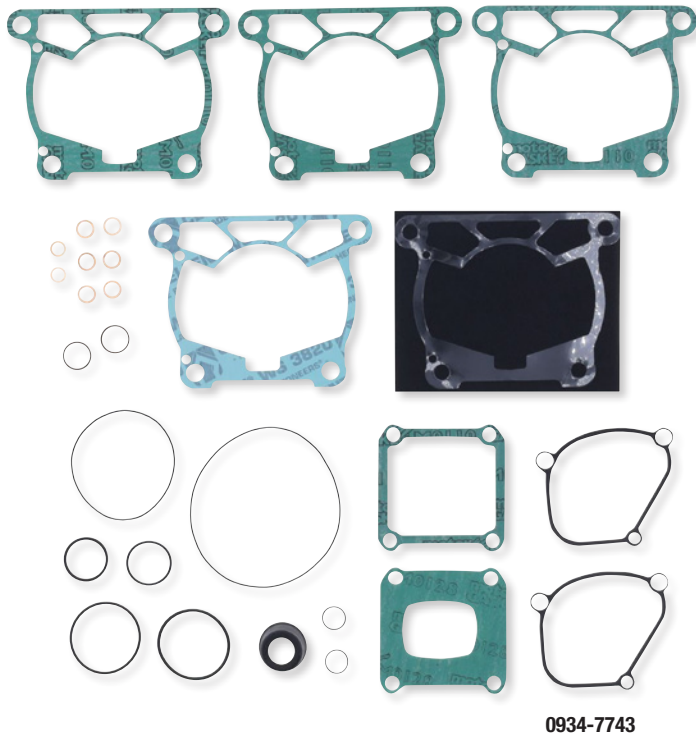
FITS MODEL	SIZE	COLOR	PART #
KTM (CONT)			
EXC-F 500 17-24	270 mm	Orange	1704-0598
	280 mm	Black	1704-0604
XC 125 21-24	270 mm	Orange	1704-0598
	280 mm	Black	1704-0604
XC 150 10-21	270 mm	Orange	1704-0598
	280 mm	Black	1704-0604
XC 250 10-16	270 mm	Orange	1704-0598
	280 mm	Black	1704-0604
XC 300 10-17	270 mm	Orange	1704-0598
	280 mm	Black	1704-0604
XC-W 150 17-18	270 mm	Orange	1704-0598
	280 mm	Black	1704-0604
XC-W 200 12-16	270 mm	Orange	1704-0598
	280 mm	Black	1704-0604
XC-W 250 11-19	270 mm	Orange	1704-0598
	280 mm	Black	1704-0604
XC-W 300 11-19	270 mm	Orange	1704-0598
	280 mm	Black	1704-0604
XC-W 400 11	270 mm	Orange	1704-0598
	280 mm	Black	1704-0604
XC-W 500 12-16	270 mm	Orange	1704-0598
	280 mm	Black	1704-0604
XCF-W 250 12-16	270 mm	Orange	1704-0598
	280 mm	Black	1704-0604
XCF-W 350 10-16	270 mm	Orange	1704-0598
	280 mm	Black	1704-0604
SHERCO			
250 SE/SEF/SE-R WP	270 mm	Black	1704-0600
300 SE/SEF/SEF-R/SE-R WP	270 mm	Black	1704-0600
450 SEF/SEF-R WP	270 mm	Black	1704-0600
SUZUKI			
RM 125 96-08	270 mm	Black	1704-0596
	280 mm	Black	1704-0603
RM 250 96-08	270 mm	Black	1704-0596
	280 mm	Black	1704-0603
RM-Z 250 09-23	270 mm	Black	1704-0596
	280 mm	Black	1704-0603
RM-Z 450 09-23	270 mm	Black	1704-0596
	280 mm	Black	1704-0603
RMX 450 05-17	270 mm	Black	1704-0596
	280 mm	Black	1704-0603
DR-Z 400 00-20	270 mm	Black	1704-0596
	280 mm	Black	1704-0603
YAMAHA			
YZ 85 02-17	250 mm	Black	1704-0601
YZ 125 07-21	280 mm	Black	1704-0602
YZ 250/F/FX/X 07-23	280 mm	Black	1704-0602
YZ 450F/FX/X 08-23	280 mm	Black	1704-0602



**COMPLETE BILLETPROOF® CLUTCH KIT
FOR HONDA CRF250R/X 22-24**

- Kit includes Billetproof® clutch cover, basket, inner hub, pressure plate, fiber and steel plates, and high-temperature clutch springs

DESCRIPTION	PART #
Complete billetproof® clutch kit	1130-0833



**ATHENA
TOP END GASKET KIT**

- Superior-quality gasket sets from Athena S.p.A
- Head gaskets feature rubber-coated spring steel construction
- Soft steel base gaskets are rubber coated
- Steel core materials feature high spring-back and superior tensile strength
- Revolutionary transparent coating guarantees a perfect seal even at extremely high temperatures
- High-temperature blue silicone beading on most critical flat gaskets
- Kit includes all necessary top-quality gaskets, rubber parts and valve stem seals to rebuild top-ends

FITS MODEL	TOP END GASKET KIT	COMPLETE GASKET KIT
GASGAS		
MC 125 24	0934-7743	0934-7744
HUSQVARNA		
TC 125 23-24	0934-7743	0934-7744
TE 150 24	0934-7743	0934-7744

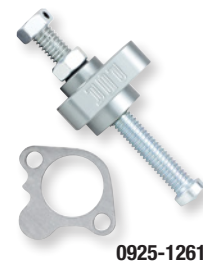


FITS MODEL	TOP END GASKET KIT	COMPLETE GASKET KIT
KTM		
SX 125 23-24	0934-7745	0934-7744
EXC 150 24	0934-7745	0934-7744
XC-W 150 24	0934-7745	0934-7744
XC 125 23-24	0934-7745	0934-7744

PSR

MANUAL CAM CHAIN TENSIONERS

- CNC-machined from billet aluminum with a gunmetal finish
- Replace OEM automatic/hydraulic tensioner
- Eliminate out-of-timing problems caused by the OEM automatic tensioner
- Eliminate excess tension/premature engine wear caused by OEM hydraulic tensioner
- Eliminate cam chain rattling caused by factory tensioner failure



STREET

FITS MODEL	PART #
BMW	
S1000RR 10-18	0925-1032
K1200 06-09	0925-1134
K1300 08-16	0925-1134
HONDA	
CBR600F3 95-98	0925-0768
CBR600F4 99-00	0925-0768
CBR600F4i 01-06	0925-0768
CBR600RR 03-22	0925-0767
VFR800 02-08	0925-0767
CBR900RR 93-99	0925-0768
CB 919 02-07	0925-0768
CBR1000RR 04-07	0925-0767
CBR1000RR 08-22	0925-0769
CBR1000S 14-19	0925-0769
CBR1100XX 97-03	0925-0768
KAWASAKI	
EX500R 87-09	0925-0773
ZX600 Ninja 600R 88-96	0925-0773
ZX6R/RR 96-22	0925-0771
ZX7R 89-90	0925-0773
ZX7R 91-02	0925-0771
VN750 Vulcan 85-03	0925-0773

FITS MODEL	PART #
KAWASAKI (CONT)	
ZX9R 94-97	0925-0771
ZX10R 04-15	0925-0774
ZX10R 16	0925-1131
ZX10R 17-21	0925-1131
ZX12R 00-05	0925-0771
SUZUKI	
GSX-R600 01-03	0925-0777
GSX-R600 04-07	0925-0778
GSX-R600 08-21	0925-0780
GSX-R750 00-03	0925-0777
GSX-R750 04-07	0925-0778
GSX-R750 08-21	0925-0780
GSX-S750 15-21	0925-0780
GSX-R1000 01-02	0925-0777
GSX-R1000 03-08	0925-0778
GSX-R1000 09-16	0925-0780
GSX1300R Hayabusa 99-07	0925-0779
GSX1300R Hayabusa 08-21	0925-0780
TRIUMPH	
Daytona 675 06-20 (from VIN #381275 and up)	0925-1133
Street Triple/R 07-20 (from VIN #560477 and up)	0925-1133

FITS MODEL	PART #
TRIUMPH (CONT)	
Tiger 800 11-17	0925-1133
YAMAHA	
MT-03 20-22	0925-0895
FZR600 89-99	0925-0783
YZF R6 99-05	0925-0783
YZF R6 06-22	0925-0784
Tenere 700 21-22	0925-0895
FZR750 87-92	0925-0783
YZF750R 93-01	0925-0783
Niken 19-20	0925-0895
FJ-09 15-16	0925-0895
FZ-09 14-16	0925-0895
MT-09 18-20	0925-0895
Tracer 900/900GT 19-20	0925-0895
FZR1000 87-96	0925-0783
YZF1000R 97	0925-0783
YZF R1 98-03	0925-0783
YZF R1 04-06	0925-0781
YZF R1 09-14	0925-0782
FJ1100 84-85	0925-0783
FJ1200 86-93	0925-0783

OFFROAD

FITS MODEL	PART #
HONDA	
CRF150R 07-09, 12-21	0925-0786
CRF150RB 07-09, 12-21	0925-0786
CRF250F 19-21	0925-1258
CRF250R 04-17	0925-0786
CRF250X 04-17	0925-0786
CRF450L 19-20	0925-1258
CRF450R 02-03	0925-0787
CRF450R 04-08	0925-0788
CRF450R 09-16	0925-0786
CRF450R 17-18	0925-1258
CRF450RL 21-22	0925-1258
CRF450RX 17-18	0925-1258
CRF450X 05-09, 12-17	0925-0788
CRF450X 19-22	0925-1258

FITS MODEL	PART #
HUSQVARNA	
TE250-510 04-10	0925-0786
KAWASAKI	
KX450F 19-22	0925-1131
KLR650 11-17	0925-0773
KTM	
SX-F250 05-20	0925-1260
SX-F350 11	0925-1260
SX-F425 09	0925-1260
SX-F450 07-10	0925-1260
SX-F505 08-09	0925-1260
SXS-F250 06-09	0925-1260
SXS-F450 07-08	0925-1260
EXC450 09-11	0925-1260
EXC530 09-11	0925-1260
EXC-F250 07, 13, 17-19	0925-1260
EXC-R450 08	0925-1260

FITS MODEL	PART #
KTM (CONT)	
EXC-R530 08	0925-1260
SMR450 08	0925-1260
XC-F250 07-09, 11-20	0925-1260
XC-F350 11	0925-1260
XC-F450 08-09	0925-1260
XC-F505 08-09	0925-1260
XC-W400 09-10	0925-1260
XC-W450 10-11	0925-1260
XC-W530 11	0925-1260
XCF-W250 06-16	0925-1260
XCR530 09-10	0925-1260
XCR-W450 08-09	0925-1260
XCR-W530 08	0925-1260
SUZUKI	
RMZ450 05-06	0925-0794
DRZ400 00-19	0925-0793

FITS MODEL	PART #
YAMAHA	
YZ250F 01-05	0925-0783
YZ250F 14-20	0925-0785
YZ250FX 15-19	0925-0785
YZ400F 98-99	0925-0783
YZ426F 00-02	0925-0783
YZ450F 03-05	0925-0783
YZ450F 06-09	0925-0785
YZ450F 10-21	0925-0785
YZ450FX 16-20	0925-0785
WR250F 01-06	0925-0783
WR250F 15-19	0925-0785
WR400F 98-00	0925-0783
WR426F 01-02	0925-0783
WR450F 03-06	0925-0783
WR450F 07-21	0925-0785

ATV

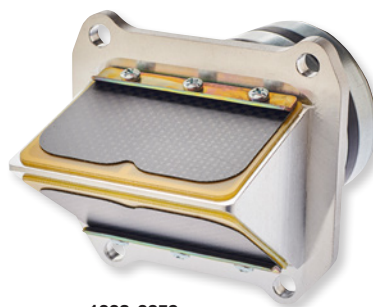
FITS MODEL	PART #
POLARIS	
Predator 500 03-08, Outlaw 500 06-07	0925-1261



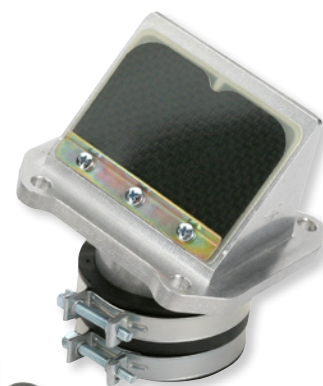
RAD VALVES

- Developed with Factory Yamaha, Pro Circuit, Factory Kawasaki of Europe, Factory KTM and top pros like Jeremy McGrath, Sebastian Tortelli and many others
- Specially designed reed cage now comes with carbon fiber Pro Series reeds
- Maintain flow velocity through the valve and redirects intake charge for even distribution to intake ports
- Pull a gear higher on uphill; instant acceleration makes passing effortless
- Made of one-piece aluminum casting and bolts in easily; no modifications necessary

NOTE: Rad Valve is stamped with PART #.



1008-0359



1008-0358



FITS MODEL	PART #	FITS MODEL	PART #	FITS MODEL	PART #
BETA		BETA (CONT)		BETA (CONT)	
RR 250 13-24 (all)	1008-0359¹	RR 300 13-24 (all)	1008-0359¹	X Trainer 300 13-24	1008-0359¹
	1008-0358²		1008-0358²		1008-0358²

¹ Premix version.

² Oil injection version.

REPLACEMENT POWER REEDS FOR RAD VALVE

FOR RAD VALVE #	REED PART #	FOR RAD VALVE #	REED PART #
RAD-01A, 11A, 11B, 21B, 21C, 33, 33B, 33C	RL-11	RAD-21A	RL-01
RAD-01B	RL-20	RAD-24A, 24X, 34A, 34B, 34XA, 42, 42X	RL-02
RAD-02B, 22, 23, 23X, 24, 34X	RL-02	RAD30A	RL07
RAD-03	RL-03	RAD36A	RL05
RAD03A	RL-18	RAD-40B	1008-0289
RAD-11	RL-11	RAD-42E	1008-0341
RAD-13	RL-03	RAD-46	1008-0312
RAD-21	RL-01	Replacement gasket for RAD-46	1008-0313



BS 10 SMART BATTERY CHARGER/MAINTAINER

• This is a UK plug option - for EU plug option please see PART #3807-0464

- Ideal for maintenance
- Very safe and compact
- Easy to use: connect and forget
- Includes nine stages of charge to enhance the performance of all your powersports batteries
- Designed for batteries up to 20Ah
- Auto detect lead acid or lithium technology
- Adaptable charging algorithm for lead acid and lithium (LiFePO4)
- Safe: connection spark free, reverse polarity, short circuit and internal overheat protection
- 6V and 12V smart battery charger and maintainer rated at 1A
- 6V and 12V manual switch selection
- Includes one clamp set and one fused ring terminal set



DESCRIPTION	PART #
UK plug	3807-0696



A



Back view



B



Back view

PRIME JERSEYS

- Hybrid fit with set-in style tailored sleeves
- Tapered collar and cuffs
- Minimal seams for maximum comfort
- Fully ventilated arms and back panel
- Moisture-wicking material keeps you dry
- Tail silicone print helps keep jersey tucked in
- Flat-stitched seams minimize irritation
- See size chart on page 27 before ordering

JAZZ JERSEYS

SIZE	(A) BLUE/BLACK	SIZE	(A) BLUE/BLACK
S	2910-7899	XL	2910-7902
M	2910-7900	2X	2910-7903
L	2910-7901	3X	2910-7904

PRIME PANTS

- Ultra-lightweight pre-curved chassis design
- Inner compression short
- Abrasion-tolerant, poly/spandex blend
- Premium-grade, full-grain leather inner knee panels
- Aramid fiber-backed inner knee panels
- Engineered small expansion stretch panels on waist
- Strategically placed vented mesh panels
- Laser-cut holes for ventilation
- Inner waist silicone band
- Interior hip pocket (easily removable)
- Ratchet-style waist closure
- See size chart on page 27 before ordering

JAZZ PANTS

DESCRIPTION	(B) BLUE/BLACK	DESCRIPTION	(B) BLUE/BLACK
Europe 44 (USA 28)	2903-2493	Europe 49 (USA 33)	2903-2498
Europe 45 (USA 29)	2903-2494	Europe 50 (USA 34)	2903-2499
Europe 46 (USA 30)	2903-2495	Europe 52 (USA 36)	2903-2500
Europe 47 (USA 31)	2903-2496	Europe 54 (USA 38)	2903-2501
Europe 48 (USA 32)	2903-2497	Europe 56 (USA 40)	2903-2502

PRIME JERSEYS & PANTS continued on next page

THOR PRIME JERSEYS & PANTS (CONT)



ALOHA JERSEYS

SIZE	(A) BLACK/GRAY	(B) NAVY/AQUA
S	2910-7887	2910-7893
M	2910-7888	2910-7894
L	2910-7889	2910-7895
XL	2910-7890	2910-7896
2X	2910-7891	2910-7897
3X	2910-7892	2910-7898

ALOHA PANTS

SIZE	(C) BLACK/GRAY	(D) NAVY/AQUA
Europe 44 (USA 28)	2901-11381	2901-11391
Europe 45 (USA 29)	2901-11382	2901-11392
Europe 46 (USA 30)	2901-11383	2901-11393
Europe 47 (USA 31)	2901-11384	2901-11394
Europe 48 (USA 32)	2901-11385	2901-11395

SIZE	(C) BLACK/GRAY	(D) NAVY/AQUA
Europe 49 (USA 33)	2901-11386	2901-11396
Europe 50 (USA 34)	2901-11387	2901-11397
Europe 52 (USA 36)	2901-11388	2901-11398
Europe 54 (USA 38)	2901-11389	2901-11399
Europe 56 (USA 40)	2901-11390	2901-11400

MEN'S RIDING GEAR SIZE CHARTS

MEN'S JERSEYS

SIZE	CHEST GIRTH
S	81 cm-86,5 cm (32"-34")
M	90 cm-94 cm (35"-37")

SIZE	CHEST GIRTH
L	96,5 cm-101,5 cm (38"-40")
XL	104 cm-109 cm (41"-43")

SIZE	CHEST GIRTH
2X	112 cm-117 cm (44"-46")
3X	119 cm-127 cm (47"-50")

MEN'S OFFROAD PANTS

SIZE	WAIST	INSEAM
Europe 44 (USA 28)	68,5 cm-71 cm (27"-28")	75 cm (29,5")
Europe 46 (USA 30)	73,5 cm-76 cm (29"-30")	76 cm (30")
Europe 48 (USA 32)	79 cm-81 cm (31"-32")	77,5 cm (30,5")
Europe 50 (USA 34)	84 cm-86 cm (33"-34")	79 cm (31")
Europe 52 (USA 36)	89 cm-91 cm (35"-36")	81 cm (32")

SIZE	WAIST	INSEAM
Europe 54 (USA 38)	94 cm-97 cm (37"-38")	81 cm (32")
Europe 56 (USA 40)	99 cm-102 cm (39"-40")	81 cm (32")
Europe 58 (USA 42)	104 cm-107 cm (41"-42")	81 cm (32")
Europe 60 (USA 44)	109 cm-112 cm (43"-44")	81 cm (32")



A



B



C



D



SENTINEL PRO GUARD

- Lightweight low-profile front and back panel design
- Press-Fit molded and ventilated comfort liner system
- Abundantly placed ventilation ports for maximum cooling
- Adjustable elastic closure with ratcheting buckle
- Adjustable shoulder straps and adjustable/removable shoulder pads allow rider custom fit and feel
- Impact foam positioned at chest and back

- Chest protector tested and certified according to European Standard EN 1621-3:2018, Level 1
- Back protector tested and certified according to European Standard EN 1621-2:2014, Level 1

SIZE	(A) WHITE	(B) BLACK	(C) RED	(D) NAVY
XS/S	2701-1295	2701-1301	2701-1307	2701-1311
M/L	2701-1296	2701-1303	2701-1309	2701-1312
XL/2X	2701-1298	2701-1304	2701-1310	2701-1315



Back view

CALIBER WINDBREAKER

- Lightweight, hooded zip-up style
- 100% nylon shell with 100% polyester lining

SIZE	BLACK
S	3001-1445
M	3001-1446

SIZE	BLACK
L	3001-1447
XL	3001-1448

SIZE	BLACK
2X	3001-1449
3X	3001-1450



HALLMAN TRADITIONS SNAPBACK HAT

- Five-panel snapback
- One size fits most

COLOR	PART #
Black/gold	2501-4161



A



B



Back view



C



MEN'S SLABTOWN JACKETS™

- Designed to Sport Fit specifications with pre-curved arms and waist adjusters
- Durable, yet casual, 450D Nylon Stretch chassis with 300d polyester internal reinforcements
- D3O® LP1 level 1 shoulder & elbow impact protectors
- D3O® VIPER level 1 back impact protector
- AirFly™ center front mesh panel, and zippered vents at the shoulders, cuffs, and back provide superior airflow
- Tested and certified according to EN 17092-3:2020 - Class AA

SIZE	(A) BLACK	(B) GRAY	(C) GREEN
S	2820-6247	2820-6254	2820-6261
M	2820-6248	2820-6255	2820-6262
L	2820-6249	2820-6256	2820-6263
XL	2820-6250	2820-6257	2820-6264

SIZE	(A) BLACK	(B) GRAY	(C) GREEN
2X	2820-6251	2820-6258	2820-6265
3X	2820-6252	2820-6259	2820-6266
4X	2820-6253	2820-6260	2820-6267

SIZE	S	M	L	XL	2X	3X	4X
Chest	89 cm - 94 cm (35"-37")	94 cm - 104 cm (37"-41")	104 cm - 112 cm (41"-44")	112 cm - 122 cm (44"-48")	122 cm - 135 cm (48"-53")	135 cm - 147 cm (53"-58")	147 cm - 160 cm (58"-63")
Sleeve length	81 cm (32")	84 cm (33")	86 cm (34")	89 cm (35")	91 cm (36")	94 cm (37")	97 cm (38")



MEN'S UPARMOR™ COVEC® JEANS

- Feature high-protection, 12.5 oz internally reinforced COVEC® T400 stretch denim fabric
- Jeans house low-profile D30® Ghost impact protectors at knee
- Tested and certified to Standard EN 1621-1:201 D30® Ghost impact protectors at knee
- Garment tested & certified to EN 17092-4:2020 - Class A
- See Icon® Europe size conversion chart below before ordering



Back view



A



B

SIZE	(A) BLUE	(B) BLACK
30	2821-1468	2821-1476
32	2821-1469	2821-1477
34	2821-1470	2821-1478
36	2821-1471	2821-1479

SIZE	(A) BLUE	(B) BLACK
38	2821-1472	2821-1480
40	2821-1473	2821-1481
42	2821-1474	2821-1482
44	2821-1475	2821-1483



MEN'S SLABTOWN JEANS

- Built from strong, not binding Cordura denim with strategically placed stretch panels
- Internal reinforcements with low-profile D30™ Ghost level 1 hip and knee protectors provide extra shielding
- Premium YKK® zippers
- Tested & certified to EN 17092-4:2020 -Class A
- See Icon® Europe size conversion chart below before ordering

SIZE	BLACK	SIZE	BLACK
30	2821-1445	38	2821-1449
32	2821-1446	40	2821-1450
34	2821-1447	42	2821-1451
36	2821-1448	44	2821-1452



Back view

SIZE	30	32	34	36	38	40	42	44
Waist	76 cm (30")	81 cm (32")	86 cm (34")	91 cm (36")	97 cm (38")	102 cm (40")	107 cm (42")	112 cm (44")
Inseam	81 cm (32")	84 cm (33")	84 cm (33")	84 cm (33")	86 cm (34")	86 cm (34")	86 cm (34")	86 cm (34")




MEN'S CARGA CE™ BOOTS

- Road-ready protection in a classic, skate-inspired package
- Genuine leather upper provides real-world coverage against asphalt
- D3O® ankle inserts reduce transmitted impact forces while the oil- and slip-resistant rubber outsole ensures you stick every trick
- Reinforced shifter overlay
- Hi-rebound EVA foam insole
- Tested and certified according to standard - EN 13634:2017

SIZE	(A) BLACK	(B) STEALTH	(C) CLASSIC
Europe 39 (USA 7)	3401-0994	3401-1006	3401-1018
Europe 41 (USA 8)	3401-0995	3401-1007	3401-1019
Europe 42 (USA 8,5)	3401-0996	3401-1008	3401-1020
Europe 43 (USA 9)	3401-0997	3401-1009	3401-1021
Europe 43,5 (USA 9,5)	3401-0998	3401-1010	3401-1022
Europe 44 (USA 10)	3401-0999	3401-1011	3401-1023
Europe 44,5 (USA 10,5)	3401-1000	3401-1012	3401-1024
Europe 45 (USA 11)	3401-1001	3401-1013	3401-1025
Europe 45,5 (USA 11,5)	3401-1002	3401-1014	3401-1026
Europe 46 (USA 12)	3401-1003	3401-1015	3401-1027
Europe 47 (USA 13)	3401-1004	3401-1016	3401-1028
Europe 48,5 (USA 14)	3401-1005	3401-1017	3401-1029



TECHDURA TACTICAL PACK

- Low profile pack solution to comfortably transport the off-road trailside essentials
- Constructed from heavy duty 1000D poly-fabric, 450D coated poly-fabric, and 3D comfort mesh
- Ergonomic Techdura Tactical Pack provides ample carrying capacity thanks to a 5,5-6L fixed main back compartment, and lower chest and lower lateral side pouches offering 0,75L volume capacity each, for a total of up to 9L of overall carrying capacity
- The front and side pouches are removable if desired, allowing the pack to become even more low profile allowing the rider to carry along only the necessary essentials
- Design allows the rider to centralize and disperse the pack's weight closer to and around the rider's body for better weight distribution and comfort for longer riding stamina, less overall muscle fatigue, and unobstructed mobility on the bike

- Pack has both a large belly buckle and a secure and easy to open and close, magnetic chest buckle, providing a large range of adjustability
- MOLLE webbing for user attachments like radios or other communication systems
- Multiple compartments specifically designed to organize and carry tools, zip ties, tire spoons, patches, phone, and other necessities
- Ergonomic shoulder straps with perforated foam padding and mesh panels for an optimized airflow, adjustable and removable chest strap and the Alpinestars' magnetic chest buckle for a fast and secure adjustment.
- Can accommodate water bladders (not included) up to 3L in volume

NOTE: Water bladder not included.

PART #	DESCRIPTION
3510-0176	(A) Black

PART #	DESCRIPTION
3510-0178	(B) Black/gray