



DUAL SLIP-ON EXHAUSTS

FOR POLARIS SCRAMBLER/SPORTSMAN XP 1000S 20-23

- Built and assembled in northern Sweden
- All cans and tubes are SS304 stainless steel
- All aluminum parts are CNC-machined from 6061 billet
- Precision TIG-welded with high-quality filler rod; mandrel-bent tubing
- Great power increase
- Spark arrestor included

NOTE: All exhausts and mufflers are bolt-on and are made to fit stock vehicles; any aftermarket modifications or additions may affect exhaust fit.



APX EXHAUSTS

- Aluminum modular exhaust
- CNC-machined brackets on all critical points
- CAD drawn with extruded aluminum cans
- Casted stainless intake flanges and new inner core

FITS MODEL

Dual APX exhaust

PART

1831-1064

1831-1069



SINGLE SLIP-ON EXHAUST

- Built and assembled in northern Sweden
- Can and tube are SS304 stainless steel
- All aluminum parts are CNC-machined from 6061 billet
- Precision TIG-welded with high-quality filler rod; mandrel-bent tubing
- Great power increase
- Spark arrestor included

NOTE: All exhausts and mufflers are bolt-on and are made to fit stock vehicles; any aftermarket modifications or additions may affect exhaust fit.

1830-0657



1831-1065



APX EXHAUST

- Aluminum modular exhaust
- CNC-machined brackets on all critical points
- CAD drawn with extruded aluminum can
- Casted stainless intake flanges and new inner core

DESCRIPTION

YAMAHA

Grizzly/Kodiak 700 07-23

PART

1831-1065

¹ AT6L models require Segway adapter PART #1832-0098 (sold separately).

DESCRIPTION

POLARIS

Sportsman XP 850/1000 17-23

PART

1831-1069

SEGWAY

Snarler 570/600 AT6/AT6L 21-23

1830-0657¹

EXHAUST HEADER

- Header fits all RJCW slip-ons
- Header is made out of 304 stainless steel
- Header is TIG-welded with thick Mandrel-bent tubing

HEADERS

FITS MODELS

CF MOTO

CForce 800/820 16-21

PART

1832-0105

FITS MODELS

CF MOTO (CONT)

CForce 850/1000 XC 18-23

PART

1832-0105





RADIUSCX CLUTCH KIT FOR YAMAHA YZ450F 23-24

- RadiusCX is a top-of-the-line auto clutch product that brings together all of Rekluse's latest technology into one package
- TorqDrive® friction disk technology coupled with EXP and Core technology results in significant advancement in auto performance with exceptional hook-up, lever feel and durability
- Better starts, carry more speed, focus on the line and not on the clutch
- Perfect power delivery every time
- Maintain momentum and use the torque of your motor without worrying about stalling
- Increased power transfer over OEM
- Fully tunable to suit rider and/or terrain

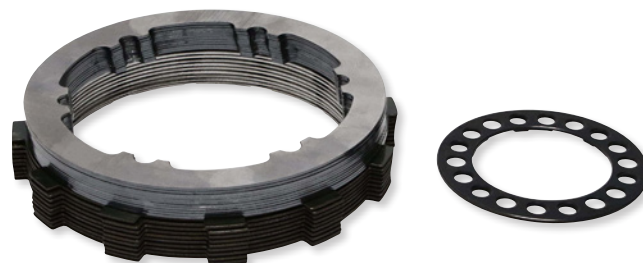
- Optimized pressure plate design provides our best lever feel; consistent control and behavior
- Core components deliver improved oil flow and stability over wide temperature ranges
- TorqDrive friction disks provide longer clutch life with less adjustment over time
- Rekluse sleeves eliminate basket wear and notching

DESCRIPTION	PART #
RadiusCX clutch kit	1130-0685

TORQDRIVE® CLUTCH PACK FOR YAMAHA YZ450F 23-24

- A high-performance manual clutch is now more accessible than ever with the TorqDrive Clutch Pack
- It's as easy as changing your clutch plates into your OEM components
- Proven at the highest levels of racing, TorqDrive thin friction disk technology allows more disks to fit in your OEM clutch's footprint, decreasing slip and unlocking the full power of your engine
- TorqDrive Technology also provides increased clutch life and decreased clutch fade
- The additional friction disks provide an average of a 25% gain in torque capacity over stock, while reducing lever pull by an average of 10% (figures vary by model)
- TorqDrive delivers stronger drive throughout the powerband, unlocking the bike's power without any expensive motor mods
- Rekluse basket sleeves eliminate basket wear and notching

NOTE: Not a replacement clutch pack for RadiusX, RadiusCX, or Core Manual TorqDrive.



DESCRIPTION	PART #
TorqDrive clutch pack	1131-3879

CLUTCH COVER FOR YAMAHA YZ450F 23-24

- Specifically engineered to provide unparalleled durability and performance in a single, stylish component
- Ready to ride whenever you are, standing up against rocks, logs, boots and whatever else you may encounter in your adventures
- Billet aluminum construction provides incredible strength
- Double hard anodized to further enhance durability and wear resistance
- Has a greater depth than the OEM design, allowing increased oil capacity



DESCRIPTION	PART #
Clutch cover	0940-2115

CLUTCH BOOT

- PART #1132-1844 replaces OEM #5410-421
- PART #1132-1845 replaces OEM #5411-489
- PART #1132-1846 replaces OEM #7070-00154
- PART #1132-1847 replaces OEM #7070-01168
- PART #1132-1848 replaces OEM #s 7066-00007 and 7070-00789
- PART #1132-1849 replaces OEM #s 7070-00719, 7070-01043, 7070-01467 and 7070-002585



1132-1849

FITS MODEL	CLUTCH INTAKE TUBE BOOT	CLUTCH OUTLET TUBE BOOT
CAN-AM		
Outlander 400 (All Models) 09-14	1132-1849	-
Outlander 450 (All Models) 15-22	1132-1849	-
Outlander 500 (All Models) 07-08	1132-1846	1132-1848
Renegade 500 08-14	1132-1849	1132-1848
Renegade 500 09	1132-1846	1132-1848
Outlander 500/650/800 (All Models) 09-14	1132-1849	1132-1848
Outlander 500/800 (All Models)/Renegade 500/800 15	1132-1849	1132-1847
Renegade 570/850 16-22	1132-1849	1132-1847
Outlander 570/850 (All Models) 16-23	1132-1849	1132-1847
Outlander 650/800 (All Models) 06-08	1132-1846	1132-1848
Outlander 650 (All Models)/Renegade 1000 15-22	1132-1849	1132-1847
Renegade 800 07-14	1132-1849	1132-1847
Renegade 800 08-09	1132-1846	1132-1848
Commander 800/1000 (All Models) 11-14	1132-1849	1132-1848
Outlander 1000 (All Models)/Renegade 1000 12-14	1132-1849	1132-1848
Maverick 1000 (All Models) 13-14	1132-1849	1132-1848
Outlander 1000 (All Models) 15-23	1132-1849	1132-1847
POLARIS		
Trail Boss 250 85-92	1132-1844	-
250 2x4, 4x4/350L 4x4 93	1132-1844	1132-1844
Trail Blazer 250 93-01	1132-1844	1132-1844
Trail Boss 250 93-01	1132-1844	1132-1844
Xplorer 250 00-01	1132-1844	1132-1844
Xplorer 250 02	1132-1844	1132-1845
Trail Blazer 250 02-03	1132-1844	1132-1845

FITS MODEL	CLUTCH INTAKE TUBE BOOT	CLUTCH OUTLET TUBE BOOT
POLARIS (CONT)		
300 2x4, 4x4 94-95	1132-1844	1132-1844
Xpress 300 96-99	1132-1844	1132-1844
Magnum 325 00-02	-	1132-1845
Magnum 330/Sportsman 600/Trail Boss 330 03-05	-	1132-1845
ATP 330/Ranger 500/Scrambler 500/Sportsman 400/500/Trail Blazer 250 04-05	-	1132-1845
Sportsman 335 99-00	1132-1844	1132-1845
Sportsman 400L 93-97	-	1132-1844
Sport 400 94-99	-	-
Big Boss 400 6x6 95-97	-	1132-1844
Xplorer 400 95-01	-	1132-1844
Scrambler 400 95-02	-	1132-1844
Xpress 400 96-97	1132-1844	1132-1844
Sportsman 400 01-03	1132-1844	1132-1845
Magnum 425 95-98	1132-1844	1132-1844
Diesel 455 99-01	1132-1844	1132-1845
Sportsman 500 96-97	1132-1844	1132-1844
Scrambler 500 97	-	1132-1844
Xplorer 500 97	1132-1844	1132-1844
Big Boss 500 6x6 98-99	1132-1844	1132-1845
Scrambler 500 98-03	1132-1844	1132-1844
Sportsman 500 98-03	1132-1844	1132-1845
Magnum 500 99-02	1132-1844	1132-1845
ATP 500 04	1132-1844	1132-1845
Sportsman 700 02-05	-	1132-1845
Sportsman 800 05	-	1132-1845

INTAKE BOOTS

- Direct replacement
- Constructed of rubber and aluminum
- Integrated rubber seal
- Laser-etched Quad Logic logo
- See page 1053 of the 2023 Parts Unlimited ATV/UTV catalog for additional intake boots and applications

FITS MODEL	CARB TO ENGINE	AIRBOX TO CARB
ARCTIC CAT		
500 4x4 Automatic (Does not fit manual transmission models) 05-09	1050-0469	-
POLARIS		
250 2x4, 4x4 93	1050-0471	-
300 2x4, 4x4 94-95	1050-0471	-
Sport 400L 96-97	1050-0471	-
Sportsman 600 03-05	-	1050-0470

1050-0469



FITS MODEL	CARB TO ENGINE	AIRBOX TO CARB
POLARIS (CONT)		
Sportsman 700 Carb 02-06	-	1050-0470
Trail Blazer 250 90-06	1050-0471	-
Trail Boss 250 85-99	1050-0471	-
Xplorer 250 00-02	1050-0471	-
Xplorer 300/Xpress 300 96-99	1050-0471	-
Xpress 400 96-97	1050-0471	-



WHEEL BEARING INSTALLER/REMOVER TOOLS

- Dual-sided driver/installer tool
- Includes holder for hub and driver
- For the full line of Quad Logic wheel bearing installer/remover tools, go to page 497 of the 2022 Parts Europe/Drag Specialties Tire & Service catalog

FITS MODEL	FRONT PART #	REAR PART #
CAN-AM		
Outlander 400 H.O. 4x4 04-08	3811-0127	3811-0127
Outlander 400 4x4 09-11	3811-0127	3811-0127
Renegade 500 H.O. EFI 4x4 08	3811-0127	3811-0127
Outlander 500 H.O. 4x4/ Renegade 800 H.O. EFI 4x4 07-08	3811-0127	3811-0127
Outlander 500 4x4/800R 4x4 09-14	3811-0127	3811-0127
Renegade 500 4x4/800R 4x4 09-15	3811-0127	3811-0127
Defender 500 HD5 DPS 4x4/ Outlander 570 4x4 17-21	3811-0127	3811-0127
Outlander 650 4x4 09-19	3811-0127	3811-0127
Renegade 570 4x4/Renegade 850 4x4 16-21	3811-0127	3811-0127
Outlander 800 H.O. EFI 4x4 06-08	3811-0127	3811-0127
Commander 800R 4x4 12-20	3811-0127	3811-0127
Maverick Trail 800 4x4 21-21	3811-0127	3811-0127
Outlander 850 4x4 19-21	3811-0127	3811-0127
Maverick X3 Max Turbo R X DS/R/X3 Turbo R X RS/ DS/900 4x4/Max Turbo R X RS 17-19	3811-0128	3811-0128
Maverick X3 Turbo R X RS w/Smart-Lok 4x4 18	3811-0128	3811-0128
Maverick X3 Turbo R X RC/ Maverick X3 Turbo R X MR 18-19	3811-0128	3811-0128
Maverick X3 Max Turbo 18-20	3811-0128	3811-0128
Maverick X3 Turbo 900 4x4/X RC/X MR 18-21	3811-0128	3811-0128
Maverick X3 Turbo RR X RS/RR X RS/R RS/ Max Turbo R DS/R RS/Turbo R DS 20-21	3811-0128	3811-0128
Maverick X3 Max Turbo RR X MR/X3 Turbo RR X MR (72")/X3 Max Turbo RR X DS/RR X RS/ X3 Turbo RR X RS/X3 Turbo RR X RC(72") 20-22	3811-0128	3811-0128
Maverick X3 Turbo RR X RS Smart-Shox/ Turbo DS/X3 Max Turbo RR X RS Smart-Shox/ X3 Max Turbo DS 21-22	3811-0128	3811-0128
Maverick X3 Turbo RR RS/Max Turbo RR DS/ Turbo RR X RC (64")/Turbo RR DS/ Turbo RR X MR (64") 22	3811-0128	3811-0128
Commander 1000 4x4 12-14	3811-0127	3811-0127

FITS MODEL	FRONT PART #	REAR PART #
CAN-AM (CONT)		
Outlander 1000 DPS 4x4/ Renegade 1000 4x4 13-15	3811-0127	3811-0127
Maverick 1000R 4x4 14-16	3811-0127	3811-0127
Maverick 1000R DPS 4x4 16-18	3811-0127	3811-0127
Maverick Max Turbo 1000R 4x4/Turbo 1000R 4x4/ Max Turbo 1000R X DS 4x4 17	3811-0128	3811-0128
Outlander 1000R DPS 4x4 /Renegade 1000R 4x4 16-19	3811-0127	3811-0127
Defender 1000 HD10 4x4 18	3811-0127	3811-0127
POLARIS		
Sportsman Ace 325 4x4 14-15	3811-0126	-
Sportsman 325 EXT 4x4/325 EXT EFI 4x4 15	3811-0126	-
Ranger EXT 325 15-16	3811-0126	-
Sportsman 400 4x4 05	3811-0126	-
Ranger 400 4x4 10-14	3811-0126	-
Sportsman 400 H.O. 4x4 11-14	3811-0126	-
Sportsman 450 4x4 06-07	3811-0126	-
Sportsman 450 H.O. 4x4 16-22	3811-0126	-
Ranger 500 4x4 04-07	3811-0126	-
Sportsman 500 H.O. 4x4 05-06, 08-13	3811-0126	-
Ranger 500 4x2 06-08	3811-0126	-
Ace 500 4x4 17-19	3811-0126	-
Ranger 500 EFI 4x4 19-22	3811-0126	-
Ranger 570 (Full-Size) 4x4/ Sportsman 570 EPS 4x4 14-22	3811-0126	-
Ace 570 4x4 15-17	3811-0126	-
Sportsman 600 Twin 4x4 03-05	3811-0126	-
Ranger XP 700 EFI 4x4 05-08	3811-0126	-
Sportsman 700 EFI 4x4/800 EFI 4x4 07	3811-0126	-
Ranger 800 Mid-Size EFI 4x4 13-14	3811-0126	-
Ranger EV 4x4 11-22	3811-0126	-



BATTERY RELOCATION KIT FOR POLARIS

- Made of heavy gauge steel and locates the battery to the traditional spot above the left rear tire
- All cables and hardware included



FITS MODEL	PART #
Sportsman 450 16-20	2113-0907
Sportsman 570 (Standard Chassis models) 15-20	2113-0907

FITS MODEL	PART #
Sportsman 570 Touring (Does not fit X2 or 6x6) 15-21	2113-0907



BT 03 BATTERY CONDITION INDICATOR WITH INTEGRATED LED

- Designed for professionals
- Check the state of charge of 12V lead acid batteries with three integrated LED lights
- Extra slim design is ideal if battery is difficult to access, hidden or if you cannot use clamps
- Just connect the eyelet terminals to the battery and charge normally
- Compatible with all the BS smart chargers and allows you to charge and maintain batteries without disconnecting the fused ring (connect, test, charge and forget)
- Eyelet connection set with three integrated LED (green, orange, red)
- SAE charge port with weatherproof sealing cap
- 2x M8 eyelets terminals (8,4 mm)
- 10A fuse protection
- 500 mm cable length
- For 12V lead acid batteries only



DESCRIPTION	PART #
BT 03 battery condition indicator w/ integrated LED	3807-0643



BRAKE BLEEDER CAPS

- Keep brakes clean and free of dirt, sand, mud and other debris
- Sold in 4-pack

COLOR	PART #	COLOR	PART #	COLOR	PART #	COLOR	PART #
Red	0703-0885	Green	0703-0887	Blue	0703-0888	Black	0703-0889



IN-LINE FUEL VALVES

- Brass/nickel construction
- Smooth on/off action
- Used for replacement or for security when installed in a non-conspicuous spot



DESCRIPTION	PART #
For 4,8 mm (³ / ₁₆ ") fuel line	0705-0319
For 6,4 mm (¹ / ₄ ") fuel line	0705-0320

DESCRIPTION	PART #
For 7,9 mm (⁵ / ₁₆ ") fuel line	0705-0321
For 9,5 mm (³ / ₈ ") fuel line	0705-0334

HOSE SPLICERS

- Use to route or repair fuel lines, oil lines and air lines
- Solid brass tubing and hose splicers
- Barbed ends provide a secure fit
- Sold each



DESCRIPTION	PART #
IN-LINE SPLICERS (FIT HOSE ID)	
³ / ₁₆ "	0706-0306
¹ / ₄ "	0706-0195
⁵ / ₁₆ "	0706-0196
³ / ₈ "	0706-0197

DESCRIPTION	PART #
IN-LINE REDUCERS (FIT HOSE ID)	
⁵ / ₁₆ " to ¹ / ₄ "	0706-0319
³ / ₈ " to ⁵ / ₁₆ "	0706-0320
"L" SPLICERS (FIT HOSE ID)	
¹ / ₄ "	0706-0308

DESCRIPTION	PART #
"L" SPLICERS (FIT HOSE ID) (CONT)	
⁵ / ₁₆ "	0706-0309
³ / ₈ "	0706-0310
"T" SPLICERS (FIT HOSE ID)	
¹ / ₈ "	0706-0311

DESCRIPTION	PART #
"T" SPLICERS (FIT HOSE ID) (CONT)	
³ / ₁₆ "	0706-0312
¹ / ₄ "	0706-0313
⁵ / ₁₆ "	0706-0314
³ / ₈ "	0706-0315

BLACK EFI FUEL LINES

- Multi-layer rubber extension
- Safe for use with any fuel or blend containing up to 100% ethanol/methanol
- SAE 30R9 (fuel injection rated)
- Maintain OEM look and performance
- Do not submerge in gasoline

• See page 1520 of the 2022 Parts Unlimited Street catalog for the complete line of Helix black EFI fuel lines

NOTE: Exempt per CARB Executive Order (E.O.) #C-U-05-002.

NOTE: EPA-15.



DESCRIPTION	PART #
3' LENGTH	
¹ / ₄ "	0706-0371

DESCRIPTION	PART #
3' LENGTH (CONT)	
⁵ / ₁₆ "	0706-0373

DESCRIPTION	PART #
3' LENGTH (CONT)	
³ / ₈ "	0706-0375

DESCRIPTION	PART #
10' LENGTH	
¹ / ₄ "	0706-0372

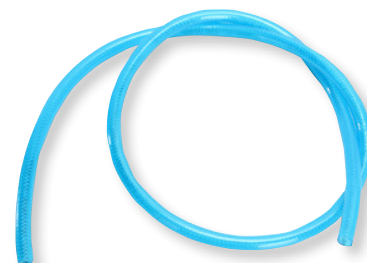
DESCRIPTION	PART #
10' LENGTH (CONT)	
³ / ₈ "	0706-0374



0706-0262



0706-0266



0706-0277

HIGH-PRESSURE FUEL LINES

- Premium transparent polyurethane tubing
- 85 durometer provides superior abrasion, kink, tear, oxidation and chemical resistance
- Includes a very strong nylon inner band yet remains flexible
- Operating temperature -40 °C-68 °C (-40 °F-155 °F); melting temperature 188 °C (370 °F)
- Withstands up to 200 psi

NOTE: Do not use with fuel containing more than 10% alcohol.

PART #	DESCRIPTION
CLEAR	
0706-0189	¹ / ₄ " ID x ³ / ₈ " OD x 91 cm (3')
0706-0262	¹ / ₄ " ID x ³ / ₈ " OD x 305 cm (10')
0706-0191	⁵ / ₁₆ " ID x 0,473" OD x 91 cm (3')
0706-0263	⁵ / ₁₆ " ID x 0,473" OD x 305 cm (10')
0706-0193	³ / ₈ " ID x ⁹ / ₁₆ " OD x 91 cm (3')

PART #	DESCRIPTION
RED	
0706-0265	¹ / ₄ " ID x ³ / ₈ " OD x 91 cm (3')
0706-0266	¹ / ₄ " ID x ³ / ₈ " OD x 305 cm (10')
0706-0267	⁵ / ₁₆ " ID x 0,473" OD x 91 cm (3')
0706-0268	⁵ / ₁₆ " ID x 0,473" OD x 305 cm (10')
0706-0269	³ / ₈ " ID x ⁹ / ₁₆ " OD x 91 cm (3')

PART #	DESCRIPTION
BLUE	
0706-0277	¹ / ₄ " ID x ³ / ₈ " OD x 91 cm (3')
0706-0278	¹ / ₄ " ID x ³ / ₈ " OD x 305 cm (10')
0706-0279	⁵ / ₁₆ " ID x 0,473" OD x 91 cm (3')
0706-0281	³ / ₈ " ID x ⁹ / ₁₆ " OD x 91 cm (3')



AIR FILTERS

FOR YAMAHA YZ250F 24 AND YZ450F 23-24

- DT-1's world-class foam technology delivers maximum airflow while maintaining critical engine protection
- Their Super Seal base eliminates the need for grease and creates the cleanest and best seal on the market
- All DT-1 Air Filters are handmade with the highest quality bonded dual, triple and evolution foam available
- DT-1 Air Filters come non-oiled or pre-oiled with the highest quality flame-resistant biodegradable filter oil

SUPER SEAL STANDARD DUAL LAYER FOAM AIR FILTER

- DT-1 standard air filters are constructed with high quality 15 mm dual-stage foam
- Custom-designed for each air box and filter cage for the best fitment and performance



1011-4740



1011-4741



1011-4742

AIRPOWER CAGE

- High-quality, lightweight aluminum cages don't flex like plastic cages, and eliminate the need for a backfire screen
- Use in combination with oiled DT-1 air filters for exceptional airflow, better throttle response and increased engine protection
- Triple/Evo fitments fit only with DT-1 Triple/Evo air filters

AIR BOX COVER

- Prevent water and dirt from entering air box when cleaning your bike
- Molded to fit onto the air box, and the sealing ring creates a leak-free seal

DUAL FOAM NON-OILED	DUAL FOAM PRE-OILED	AIRPOWER CAGE	AIRBOX COVER
1011-4740	1011-4741	1011-4742	1011-4743



ELASTIC SAND STOP FILTER SKIN

FOR HONDA CRF250 22-24 AND CRF450 21-24

- Block out sand and dirt from getting into your DT-1 air filter



FITS MODEL	PART #
DT-1 Sand Stop filter skin	1011-4744



TWIN AIR FOAMING POWERWASH

- Deep penetrating, biodegradable cleaning formula that cuts through grime, grit and grease in the garage, the workshop or at home
- Safe to use on most surfaces including plastic, aluminum, carbon fiber, painted, rubber, metals and more
- Not recommended for use on windows
- Sold each



DESCRIPTION	PART #
750 ml spray bottle	3704-0417



HEAVY-DUTY WET POWER WIPES

- Grime-fighting super-strong wet wipes for cleaning your bike, tools, even your hands
- Durable, damp, highly absorbent wet wipes work on oil, grease, paint, glues, varnishes and sealants
- Works without solvents
- Smells like eucalyptus
- Gentle on the hands, no sticky residue
- 70 wipes per pack



DESCRIPTION	PART #
70-pc. pack	3704-0418

STANDARD AIR FILTERS

- Twin Air dual-stage filters are the choice of top factory teams and riders worldwide
- Dual-bonded foam design filters out even the smallest dirt particles, while allowing more airflow than two separate layer filters (flow bench proven)
- Flat foam sealing ring provides a secure seat against the airbox, even in the worst riding conditions
- Twin Air filters are slightly smaller than stock, making them easier to change while increasing dead air space around the filter for better performance

FACTORY PRE-OILED STANDARD AIR FILTER

- The same factory treatment that race teams and OEMs receive is now available for all Twin Air users
- Filter is pre-oiled with Twin Air Bio-Foam Filter Oil using our state-of-the-art filter oiling machines to provide the ultimate consistency in pore coverage
- Same industry-leading Twin Air Filter you are used to, now pre-oiled for your convenience
- Comes in a resealable bag

OFFROAD MOTORCYCLES

FITS MODEL	STANDARD AIR FILTERS	PRE-OILED AIR FILTER	AIRBOX COVERS	GRAND PRIX DUST COVERS
GAS GAS				
TXT 125/250/280/300 23	1011-4733	-	-	-
HONDA				
CRF250R/RX 22	-	-	-	1011-4738
CRF450R/RX/RWE 21-23	-	-	-	1011-4738
HUSQVARNA				
FC 250/350/450 23	-	-	-	1011-4737
FC 250/450 Rockstar Edition 22-23	-	-	-	1011-4737
FX 350/450 23	-	-	-	1011-4737
TC 125/250 23	-	-	-	1011-4737
TX 300 23	-	-	-	1011-4737
KTM				
SX 125/250 23	-	-	-	1011-4737
SX-F 250/350 23	-	-	-	1011-4737
SX-F 250/250 Factory Edition 22-23	-	-	-	1011-4737
XC-F 250/350/450 23	-	-	-	1011-4737
XC 250/350 23	-	-	-	1011-4737
SHERCO				
Trail 125ST/250ST/300ST 23	1011-4734	-	-	-
TM RACING				
MX 2-stroke 250 22-23	-	-	1014-0372	-
MX 4-stroke 450 22-23	-	-	1014-0373	-
YAMAHA				
YZ450F 23	1011-4727	1011-4728	1011-4732	1011-4754

ATV/UTV

DESCRIPTION	PART #	DESCRIPTION	PART #
Universal Grand Prix cover	1011-4735	Universal Grand Prix cover (large)	1011-4736

DUAL-STAGE AIR FILTERS FOR YAMAHA TENERE 700 20-21

- Twin Air dual-stage filters are the choice of top factory teams and riders worldwide
- Dual-bonded foam design filters out even the smallest dirt particles, while allowing more airflow than two separate layer filters (flow bench proven)
- Flat foam sealing ring provides a secure seat against the airbox, even in the worst riding conditions
- Twin Air filters are slightly smaller than stock, making them easier to change while increasing dead air space around the filter for better performance

DESCRIPTION	PART #	DESCRIPTION	PART #
Standard air filter	1011-4553	Pre-oiled air filter	1011-4575



1011-4733



1011-4737



1011-4732

AIRBOX COVERS

- Remove the air filter and pressure wash the inside of the airbox by covering the carb inlet with a watertight cap
- Made of PVC with a rubber sealing ring
- Top screw included

GRAND PRIX COVERS

- Fits over the Twin Air filter when riding in severe conditions such as heavy dust and sand
- Filter sock with nylon

1011-4575





POWERFLOW KITS 2-STROKE/4-STROKE KITS

- 2-stroke kits include a Twin Air filter and a rigid, lightweight, billet aluminum cage that replaces the flimsy plastic stock cage and provides a tight seal to the airbox
- 4-stroke kit replaces the air-restricting stock backfire screen with a special backfire-resistant layer of foam laminated to the inside
- Includes a rigid, lightweight billet aluminum cage
- Replacement air filters available separately in standard and pre-oiled varieties

FITS MODEL	DESCRIPTION	PART #
HUSQVARNA		
TC 125/250, TX 300 23-24	Powerflow kit	1011-4750
	Repl. air filter	1011-4749
KTM		
SX 125/250, XC 250/300 23-24	Powerflow kit	1011-4750
	Repl. air filter	1011-4749

RADIATOR SLEEVES

- Fits over the radiator louvers to prevent dirt, sand and mud from clogging the radiator
- Made from nylon-coated glass yarn material
- Easy installation – simply remove the louvers, slide on the sleeve and reinstall on the radiator

FITS MODEL	PART #
HONDA	
CRF 250 R/X 22-24	1904-0306
CRF 450 R/X/WE 21-24	1904-0306
HUSQVARNA	
FC250/350/450 23-24	1904-0305
TC125/250 23-24	1904-0305
FX350/450 23-24	1904-0305

FITS MODEL	PART #
HUSQVARNA (CONT)	
TX300 23-24	1904-0305
KTM	
SX 125/300 23-24	1904-0305
SX-F 250/350/450 23-24	1904-0305
XC-F 250/350/450 23-24	1904-0305
XC 125/250 23-24	1904-0305



1011-4750

FITS MODEL	DESCRIPTION	PART #
YAMAHA		
YZF 250 24, YZF 450 23-24	Powerflow kit	1011-4751
	Repl. air filter	1011-4752
	Pre-oiled repl. air filter	1011-4753



1904-0305

SEAT COVER FOR YAMAHA YZF 250 24, YZF 450 23-24

- Provides exceptional grip, wet or dry
- Watertight construction
- Perfect replacement for OEM motorcycle seat covers



DESCRIPTION	PART #
Seat cover	0821-3576



PRO LG SKID PLATES

- Made from high-density polyethylene construction
- 8 mm thick HDPE offers more protection than the standard Pro Skid Plate
- Full linkage protection
- 40% lighter than aluminum and no rattling
- Mounting hardware and installation instructions included



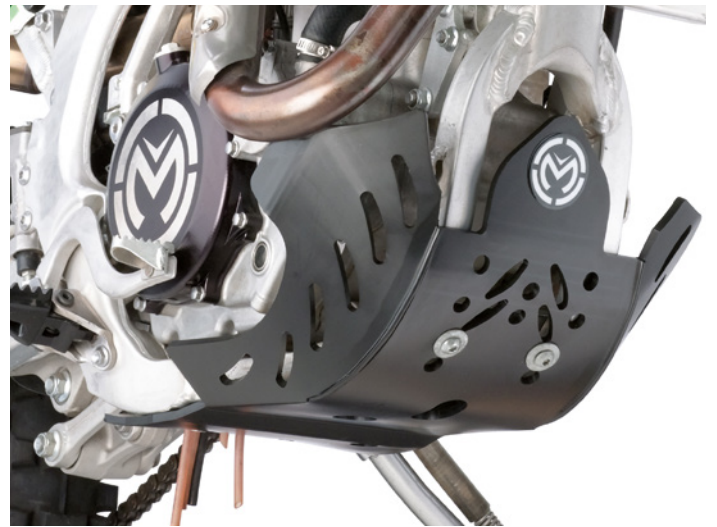
FITS MODEL	PART #
KAWASAKI	
KX250/250X 21-23	0506-1956

FITS MODEL	PART #
KAWASAKI (CONT)	
KX450/450X 19-23	0506-1957

FITS MODEL	PART #
YAMAHA	
YZ450F/450FX 23-24	0506-1958

PRO SKID PLATE FOR YAMAHA YZ450F/450FX 23-24

- Made from a flexible high-density polyethylene construction
- HDPE is an excellent material: a technical plastic that offers many characteristics to protect your bike
- 6 mm thick for maximum protection of the frame and cases
- Goes through a thermoforming process and is then welded
- 40% lighter than 4 mm aluminum
- No more vibrating or rattling
- Mounting hardware and installation instructions included



DESCRIPTION	PART #
Pro Skid Plate	0506-1959

REAR RADIUS ROD PLATE FOR POLARIS RZR PRO-XP (ALL)

- Replace the thin OEM stock radius rod plate
- This plate takes a lot of stress – replace it with this 16 mm (5/8”) thick billet machined plate
- No more flex and you will never have to worry about it breaking or bending
- Installs just like the stock unit, no modifications necessary



FITS MODEL	PART #
Rear radius rod plate	1302-0713




FLEX BRAKE LEVER BY ARC

- Forged, anodized, and hinged lever with CNC-machined master cylinder interfaces
- Adjustable reach allows customization to rider's hand size
- ARC hinge design allows lever to flex out of the way in most impact situations
- Available in blue with laser-etched Moose Racing by ARC logos

FITS MODEL

PART

HUSQVARNA

TC/FC "Brembo" 14-20 (not for 65-85)

0614-1853

KTM

All KTM "Brembo" 14-21 (except 65-85)

0614-1853



0613-2076

FLEX LEVERS

- Made from forged 6061-T6 aluminum lever body for added durability
- Comes in silver finish
- Flexible and unbreakable design that folds backwards on impact
- Adjustable to customize lever to accommodate various hand sizes
- Lever head is also machined from 6061-T6 aluminum

FITS MODEL	CLUTCH	BRAKE
GAS GAS		
EC300 13-17	0613-2076	-
EX450 05-11	0613-2076	-
HONDA		
CRF150R 07-22	0613-2072	-
CRF250R 10-22	0613-2073	-
CRF250RX 19-22	0613-2073	-
CRF250RL 17-20	0613-2074	0614-1860
CRF300L 21	0613-2074	0614-1860
CRF450R 21-22	0613-2074	-

FITS MODEL	CLUTCH	BRAKE
HONDA (CONT)		
CRF450RWE 21-22	0613-2074	-
CRF450RX 17-20	0613-2073	-
CRF450RX 21-22	0613-2075	-
CRF450X 19-22	0613-2073	-
KTM		
65/85 SX 14-22	0613-2071	-
250F Freeride 18-19	0613-2071	-
250R Freeride 14-19	0613-2071	-
350 Freeride 14-19	0613-2071	-



FORGED ALUMINUM OE-STYLE CLUTCH LEVER

- Great way to update from the OEM cast design levers
- Forged from high quality 6061-T6 aluminum
- More resistant to breakage than conventional levers
- Exact replacement to the OEM design fitments

DESCRIPTION

CLUTCH SILVER

KAWASAKI

KX250XC 21-22

0613-2070

KX450 22

0613-2070



WHEEL SPACERS

- Water and dirt grind between wheel bearing seals and soft OEM aluminum wheel spacers; this creates grooves and allows for bearing contamination
- This makes for a tight seal that will last for years and keep your bearings fresh
- Replace or upgrade OEM wheel spacers with these durable replacements
- Kit comes with required amount of spacers per application
- Feature hardened steel contact surfaces

FITS MODEL	DESCRIPTION	PART #
KTM		
SX /XC/SX-F/XC-F 125-450 23	Rear, fits 22 mm axle	0222-0675



RIM LOCKS

- Uses welded flat plate with threaded insert that is encapsulated in rubber to help protect inner tube
- Helps prevent tire and inner tube from slipping on rim
- Recommended for off-road use motorcycles only
- Recommended for any low-pressure applications
- Sold each

DESCRIPTION	PART #
2,15" rim lock	0304-0296
2,50" rim lock	0304-0297

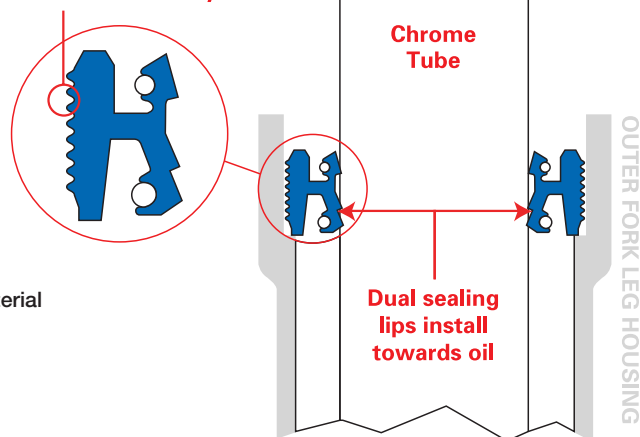


FORK AND DUST SEAL KIT

- Seal profile is engineered to create equal pressure in each seal lip; equalized seal pressure creates less drag and longer seal life
- MAX-LIFE has a coefficient of friction up to 3 times less than the OEM seal material
- Triple-lip seal design
- Dyno-tested to last 3 to 4 times longer than OEM seals
- Directional ribs allow seal to be installed easily
- Kit includes fork seals and dust wipers

DIRECTIONAL RIBS

Directional ribs allow seal to be installed easily.



FITS MODEL	PART #
SHERCO	
125-ST Trials 15-18	0407-0701
125-ST Trials Factory 16	0407-0701
ST 125 Factory/Racing 21	0407-0701
Trials 1.25 12-14	0407-0701
250-ST Trials 15-18	0407-0701
250 ST Trials Factory 16	0407-0701

FITS MODEL	PART #
SHERCO (CONT)	
ST 250 Factory/Racing 21	0407-0701
Trials 2.5 12-14	0407-0701
290-ST Trials 15	0407-0701
300-ST Trials 15-18	0407-0701
300 ST Trials Factory 16	0407-0701
Trials 2.9 12-13	0407-0701

FITS MODEL	PART #
SHERCO (CONT)	
Trials 3.0 13-14	0407-0701
Trials 3.0 Factory 14	0407-0701
ST 300 Factory/Replica 21	0407-0701
ST 300 Racing 21	0407-0701

COUNTERSHAFT WASHER/SNAP RING KIT FOR KAWASAKI KX250/250F/250X 14-22

- Always have the countershaft lock washers and snap rings on hand for a front sprocket replacement
- Sold to dealers in 10-packs; sold to consumers as each



DESCRIPTION	PART #
Countershaft washer/snap ring kit	0935-1212



HANDLEBAR RISER KITS

- Made from 6061-T6 billet aluminum
- Includes sizes 5-30 mm
- Includes all hardware and wrench



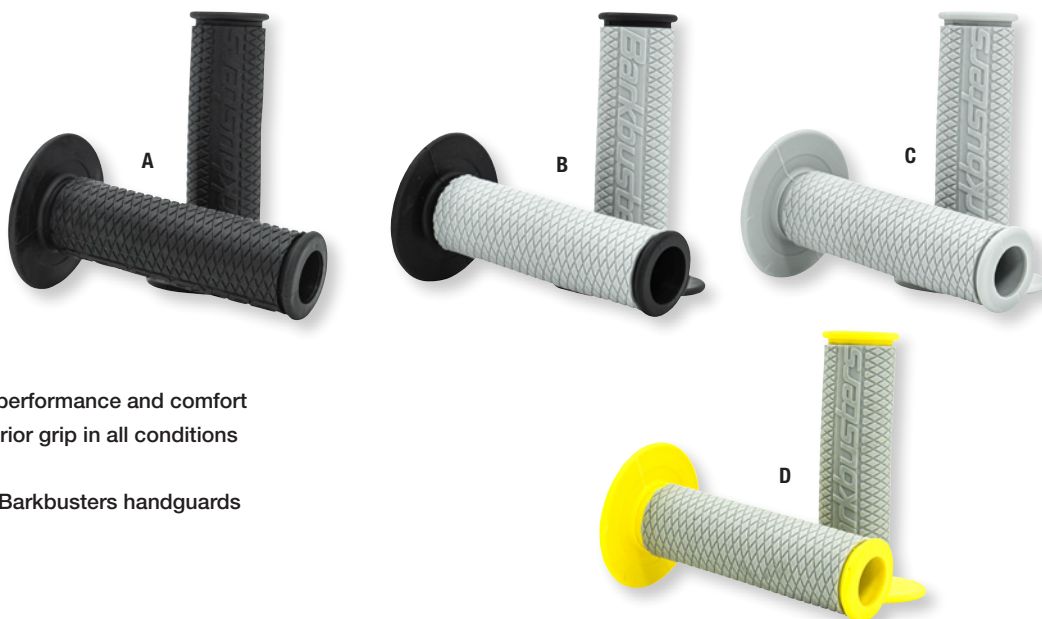
FITS MODEL	PART #
HUSQVARNA	
FC250/450 22.5 Rockstar Editions	0602-1422
FC/FX/TC/TX 125-450 23	0602-1422

FITS MODEL	PART #
KTM	
SX/XC/SXF/XCF 125-450 23	0602-1422
SX-F 250/450 22.5 Factory Edition	0602-1422



GRIPS

- Soft dual-compound construction for performance and comfort
- Barkbusters diamond pattern for superior grip in all conditions
- Anti-vibration and shock absorption
- Open-end design; compatible with all Barkbusters handguards
- Can be fitted to grip heaters
- Overall length 118 mm
- Outer diameter 30 mm
- Universal fit for street, dirt or dual-sport bikes
- Sold in pairs



COLOR	PART #	COLOR	PART #	COLOR	PART #	COLOR	PART #
(A) Black/black	0630-3068	(B) Black/gray	0630-3069	(C) Gray/gray	0630-3070	(D) Gray/yellow	0630-3071



TWO-POINT BACKBONE HANDGUARD MOUNT KITS

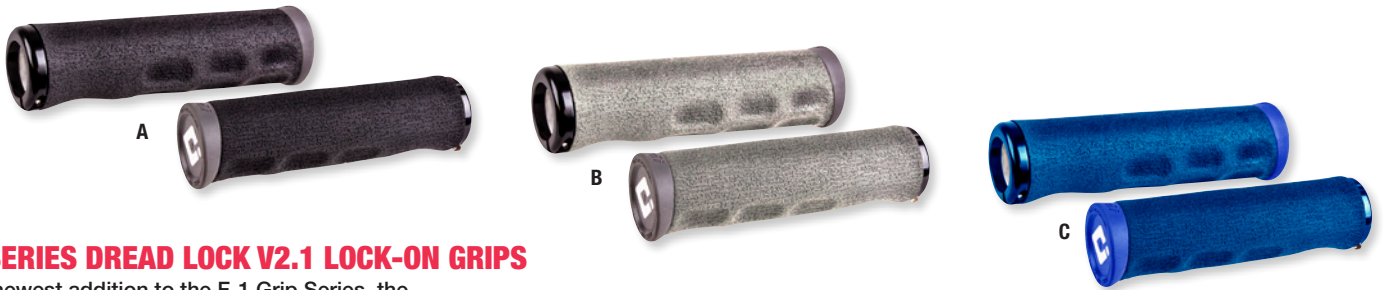
- Custom designed, bike-specific hardware kits for the ideal fit
- Two mounting mounts for a secure, full wrap-around design
- Heat-treated aluminum backbone for maximum strength and impact protection
- Compatible with Jet, VPS, Storm, BBZ or Carbon handguards (sold separately)
- Must order mounts and a set handguards for a complete assembly



FITS MODEL	PART #
APRILIA	
(E) Tuareg 660 21-23	0635-2300
BENELLI	
TRK502	0635-2340
TRX502X	0635-2340

FITS MODEL	PART #
DUCATI	
Multistrada V2/V2S 21-23	0635-2342
HONDA	
CB750 Hornet 22-23	0635-2345
XL750 Transalp 22-23	0635-2343

FITS MODEL	PART #
KTM	
(F) 1290 Super Adventure R/S 20-23	0635-2341
TRIUMPH	
Tiger 1200 GT/GT Pro/Rally 21-23	0635-2323
Tiger 1200 GT Explorer/Rally Explorer	0635-2324



F-1 SERIES DREAD LOCK V2.1 LOCK-ON GRIPS

- The newest addition to the F-1 Grip Series, the Tinker Juarez Signature Dread Lock Grips offer the padding and control needed for longer rides
- The Offset Grip design provides more padding on the palm side of grip
- Made from our exclusive A.I.R.E. compound for reduced weight and improved vibration dampening
- Contoured surface for improved comfort on longer rides

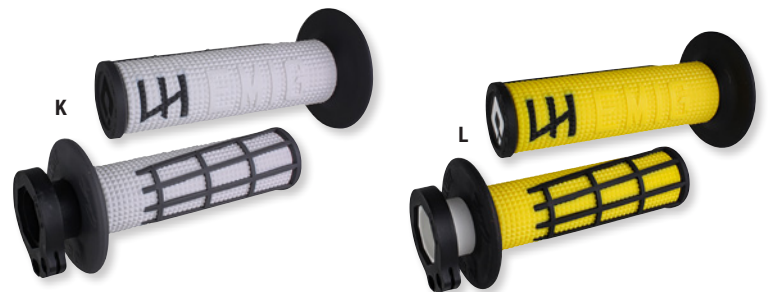
- Soft TPE Ends offer improved comfort and grip protection
- Ergonomic finger cutouts provide improved grip in all conditions
- Dread Lock textured surface provides improved control with less effort
- Sold in pairs

COLOR	PART #	COLOR	PART #	COLOR	PART #
(A) Black	0630-3058	(B) Graphite	0630-3059	(C) Blue	0630-3060



EMIG 2.0 RACING V2 LOCK-ON GRIPS

- The original signature grip of five-time AMA National and Supercross champion, Jeff Emig
- Simple installation and removal without waiting for glue to dry
- Knockout ends easily accommodate handguards
- Medium diameter knurled pattern EMIG Design includes specially designed half-waffle pattern with thumb relief
- 100% slip-free performance
- Throttle tube included with snap on cam to match more models
- No safety wire required means longer grip life, even in the event of a crash
- Kit provides cams for popular 2 & 4-stroke applications



COLOR	PART #	COLOR	PART #	COLOR	PART #
(D) Pink/grey	0630-3099	(G) Gray/graphite	0630-3030	(J) Red/white	0630-3033
(E) Black/white	0630-3028	(H) Black/green	0630-3031	(K) White/graphite	0630-3034
(F) Navy/cyan	0630-3029	(I) Orange/graphite	0630-3032	(L) Yellow/black	0630-3035



ELITE PRO LOCK-ON GRIPS

- Feature version 2.1 Lock-On system with new single clamp for more grip space and improved comfort on the outside of grip
- Engineered to provide more padding where you need it most without the bulky feel
- Ergonomic design conforms to rider's hand
- Half-waffle pattern on the front of the grips provides extra control
- Knurl pattern alternates from a smooth to sharp texture to provide more traction without irritating your hands
- Reinforced ends molded out of soft but durable material to prevent grip blowout
- Measures 130 mm L
- Sold in pairs

COLOR	PART #
(A) Blue	0630-2715
(B) Red/black	0630-2716

COLOR	PART #
(C) Black/black	0630-2714
(D) Green	0630-3061

COLOR	PART #
(E) Graphite	0630-3062



ELITE MOTION LOCK-ON GRIPS

- The offset grip design provides padding where it is needed most
- Variable knurl pattern provides comfort/traction where you need it most
- New single clamp - Version 2.1 Lock-On System
- Soft Pro compound for excellent shock absorption

- Reinforced soft ends for added durability
- Super slim profile
- Sold in pairs

COLOR	PART #
(F) Black	0630-3064

COLOR	PART #
(G) Gray	0630-3065

COLOR	PART #
(H) Mint	0630-3066



ELITE FLOW LOCK-ON GRIPS

- Feature version 2.1 Lock-On system with new single clamp
- Offset grip design provides padding where it is needed most based on riding position; designed with added grip material on one side of the grip
- Outside end of the grip is marked with clocking marks from -30° to 30°; rotate the grip so the thickest section of padding is in the area of the hands where the most pressure is
- For a more upright riding position, place the 0° mark rotated slightly back from top dead center; for riding positions where you are further off the back of the bike, place the 0° mark about 30° to 45° back from top dead center

- Half-waffle pattern for added control with reinforced soft ends for durability
- Feature a soft-pro compound for excellent shock absorption
- Measure 130mm L
- Sold in pairs

COLOR	PART #
(I) Black/black	0630-2717

COLOR	PART #
(J) Graphite/black	0630-2718

COLOR	PART #
(K) Mint	0630-3063

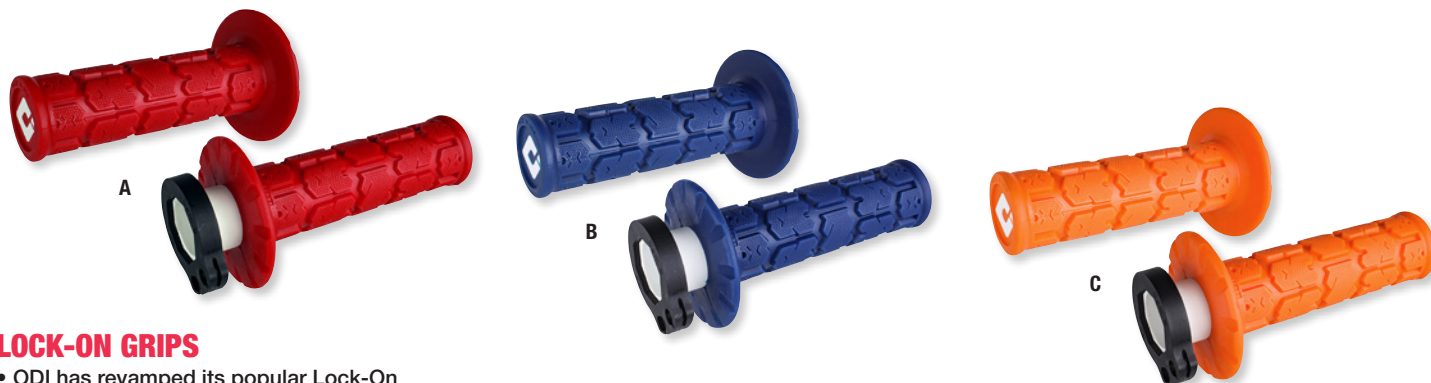


LONGNECK V2.1 LOCK-ON GRIPS

- Legendary Longneck Rib Pattern
- Exceptional vibration dampening and cushion for longer rides
- Single clamp - Version 2.1 Lock-On System
- Proprietary ODI soft compound material
- Hand friendly soft ends - reinforced for added durability
- E-bike compatible design
- Sold in pairs



COLOR	PART #
Black	0630-3067



LOCK-ON GRIPS

- ODI has revamped its popular Lock-On MX Grip to make it even better
- Lock-On Grip system allows you to change or replace grips in seconds without the need for any wire ties or glues
- Slip-free performance under any conditions
- Simple installation and removal without waiting for glue to dry
- Throttle tube included with snap-on throttle cam to match most modern motocross bikes

- Knockout ends easily accommodate handguards
- Available with Rogue grips
- Compatible with V2 throttle cams for additional fitment options
- 115 mm L grip area; 120 mm L with flange and 125 mm L with clamp
- Sold in pairs

DESCRIPTION	PART #	DESCRIPTION	PART #	DESCRIPTION	PART #
ROGUE		ROGUE (CONT)		ROGUE (CONT)	
(A) Red	0630-3054	(B) Blue	0630-3055	(C) Orange	0630-3056



ODI SIGNATURE DOWNHILL NUMBER PLATE

- Curved design allows rear cables to be tucked out of view behind plate
- Low profile design allows full field of vision
- Easy installation/removal using zip-ties (not included)
- Durable but flexible fiber-reinforced polymer construction allows plate to easily flex to fit onto fork stanchion tubes where preconfigured zip-tie grooves make installation simple

COLOR	PART #	COLOR	PART #	COLOR	PART #
(D) Black	0520-3802	(E) Blue	0520-3803	(F) Red	0520-3804



Includes clear Domain™ Shield & dark smoke shield



ECE 22.06

DOMAIN™

- Hand-crafted FRP shell that is lightweight and dependable
- Made with large brow-mounted intake vents, a protruding dorsal ridge and channeled EPS that offers increased ventilation
- Removable chin-curtain
- Internal airflow geometry and continuous venting system keep rider cool
- Fog-free Domain™ shield with Rapid-Release™ system
- Prolock® positive shield-locking system
- TracShield™ shield with tear-off posts available; sold separately
- Internal Dropshield™ with exterior switch
- Comfortable sculpted neck roll
- Removable molded breath deflector

REVERE™

SIZE	GLORY	SIZE	GLORY	SIZE	GLORY	SIZE	GLORY
XS	0101-16640	M	0101-16642	XL	0101-16644	3X	0101-16646
S	0101-16641	L	0101-16643	2X	0101-16645		

- Fully removable Hydradry™ 3-piece moisture wicking liner
- Can utilize HelmLink™ Bluetooth® communication system, which is sold separately
- See helmet size guide on page 19 before ordering
- All World Standard meets or exceeds the following: DOT FMVSS 218 (USA), ECE 22.06 (Europe), and PSC (Japan) helmet safety standards

NOTE: Does not ship with PSC certification stickers unless purchased from an authorized dealer in that country.



Includes clear & dark smoke ForceShields™ & dark smoke DropShield™



AIRFLITE™ MIPS HELMETS

- MIPS Brain Protection System can reduce harmful forces transmitted to the brain in certain types of impacts by allowing a slight uncoupled movement of the shell and liner during a crash
- Injection-molded polycarbonate shell for strength
- Multiple oversized intake and exhaust ports are strategically placed to keep you cool and comfortable, including four intake vents, MX-inspired chinbar vent and two exhaust ports that channel air between the comfort liner and the protective, energy-absorbing EPS foam liner
- Quick-change, fog-free outer FliteShield™ keeps debris away, while the internal, interchangeable DropShield™ keeps the sun in check with a flip of a switch
- Removable molded breath deflector and chin curtain
- Moisture-wicking Hydradry™ interior is fully removable and washable

- Both wind drag and weight are decreased by sculpting the traditional neckline of the Airflite™ to avoid jacket or suit interference
- See helmet size guide on page 19 before ordering
- Meets DOT FMVSS 218 (US), ECE 22.06 (Europe), SAI AS1698:2006 (Australia) and PSC (Japan) safety and testing standards

NOTE: Does not ship with SAI, PSC OR MFJ certification stickers unless purchased from an authorized dealer in that country.

TIGER'S BLOOD™

SIZE	GREY
XS	0101-16240
S	0101-16241

SIZE	GREY
M	0101-16242
L	0101-16243

SIZE	GREY
XL	0101-16244
2X	0101-16245

SIZE	GREY
3X	0101-16246



Includes clear & dark smoke
Icon Optics™ shields;
Includes dark smoke
DropShield™

ECE 22.06

AIRFORM™

- Injection-molded polycarbonate shell for strength
- Internal airflow geometry and continuous venting system keep rider cool
- Fog-free Icon Optics™ shield with Rapid-Release™ system
- Prolock™ positive shield-locking system
- TracShield™ shield with tear-off posts available; sold separately
- Internal Dropshield™ with exterior switch
- Comfortable sculpted neck roll
- Removable molded breath deflector
- Fully removable Hydradry™ 3-piece moisture wicking liner
- Internal speaker pockets work with Icon's R.A.U. Bluetooth® device

TRICK-OR-STREET3™

SIZE	WHITE	SIZE	WHITE
XS	0101-16247	M	0101-16249
S	0101-16248	L	0101-16250

- See helmet size guide below before ordering
- All World Standard meets or exceeds the following: DOT FMVSS 218 (USA), ECE 22.06 (Europe) and PSC (Japan) helmet safety standards

NOTE: Does not ship with PSC or MFJ certification stickers unless purchased from an authorized dealer in that country.

NOTE: The Dropshield™ visor must only be used while the main face shield is in the fully closed position.

SIZE	WHITE	SIZE	WHITE
XL	0101-16251	3X	0101-16253
2X	0101-16252		

ICON HELMET SIZE CHART

SIZE	HAT SIZE	INCHES	CENTIMETERS
XXS	6 ³ / ₈ - 6 ¹ / ₂	20 ¹ / ₈ - 20 ¹ / ₂	51 - 52
XS	6 ⁵ / ₈ - 6 ³ / ₄	20 ⁷ / ₈ - 21 ¹ / ₄	53 - 54
S	6 ⁷ / ₈ - 7	21 ⁵ / ₈ - 22	55 - 56
M	7 ¹ / ₈ - 7 ¹ / ₄	22 ³ / ₈ - 22 ³ / ₄	57 - 58

SIZE	HAT SIZE	INCHES	CENTIMETERS
L	7 ³ / ₈ - 7 ¹ / ₂	23 ¹ / ₈ - 23 ¹ / ₂	59 - 60
XL	7 ⁵ / ₈ - 7 ³ / ₄	24 - 24 ³ / ₈	61 - 62
2X	7 ⁷ / ₈ - 8	24 ³ / ₄ - 25 ¹ / ₈	63 - 64
3X	8 ¹ / ₈ - 8 ¹ / ₄	25 ¹ / ₂ - 26	65 - 66



ECE 22.06

DISCOVERY U9 BM

- Featuring a new 2023 graphic design
- A double shell x-Trail style helmet made up of Dyneema, carbon and aramid fiber, and epoxy resin for durability
- Removable and washable interior, with a breathable neck protector for added comfort visor equipped with Pinlock® and QRS for clear and secure vision while riding
- Visor with A+ Pinlock® and QRS, available in clear and pins
- Internal sun visor with dark and IH technology
- QRM Micrometric buckle for secure fastening and quick release
- Lightweight with a small cap weight of 1.580kg and a large cap weight of 1.650kg
- APS (Air Pump System) included
- Bluetooth™ Smart Ready
- Meets ECE 22.06 helmet safety standards



SIZE	PART #
XS	0101-16411
S	0101-16412

SIZE	PART #
LG	0101-16414
XL	0101-16415

SIZE	PART #
2X	0101-16416



A



B

ECE 22.06

LEGACY GT HELMET

- Full face double shell type made up of Dyneema, carbon and aramid fiber along with epoxy resin.
- Interior includes a removable and washable breathable neck protector
- Visor features A+ Pinlock® and QRS technology with both clear and pinned options
- Internal visor offers UV protection with dark and IH technology
- QRM Micrometric buckle for secure fastening and quick release
- With a small cap weight of 1.500kg and a large cap weight of 1.550kg
- APS (Air Pump System) included
- Bluetooth™ Smart ready
- Meets ECE 22.06 helmet safety standards



C

SIZE	(A) CARBON	(B) U9BM	(C) U8
XS	0101-16417	0101-16423	0101-16429
S	0101-16418	0101-16424	0101-16430
M	0101-16419	0101-16425	0101-16431

SIZE	(A) CARBON	(B) U9BM	(C) U8
L	0101-16420	0101-16426	0101-16432
XL	0101-16421	0101-16427	0101-16433
2X	0101-16422	0101-16428	0101-16434



ECE 22.06

STREETFIGHTER HELMETS

- Full face double shell type
- Shell made of Dyneema, carbon and aramid fiber with epoxy resin material
- Removable and washable interior with a breathable neck protector and inner lining
- Visor features A+ Pinlock® and QRS technology with both clear and pinned options
- Internal visor UV protectant with dark and IH technology
- QRM Micrometric buckle for secure fastening and quick release
- Lightweight with small cap weighing 1.430kg and large cap weighing 1.490kg
- APS (Air Pump System) included
- Bluetooth™ Smart ready
- Meets ECE 22.06 safety standards



DESCRIPTION	(A) CARBON	(B) U9 BM
XS	0101-16369	0101-16375
S	0101-16370	0101-16376
M	-	0101-16377

DESCRIPTION	(A) CARBON	(B) U9 BM
LG	0101-16372	0101-16378
XL	0101-16373	0101-16379
2X	0101-16374	0101-16380



ECE 22.06

EVOLUZIONE HELMETS

- Full face double shell type made up of Dyneema, carbon and aramid fiber along with epoxy resin
- Removable and washable interior with a breathable neck protector
- Visor features A+ Pinlock® and QRS technology with both clear and pinned options
- Internal sun visor with dark and IH technology
- QRM Micrometric buckle for secure fastening and quick release
- Lightweight, with a small cap weight of 1.470kg and a large cap weight of 1.520kg
- APS (Air Pump System) included
- Bluetooth™ smart ready
- Meets ECE 22.06 helmet safety standards

DESCRIPTION	(C) DK 2BM	(D) SP 92	(E) U9BM
XS	0101-16387	0101-16393	0101-16399
S	0101-16388	-	0101-16400
M	-	-	0101-16401

DESCRIPTION	(C) DK 2BM	(D) SP 92	(E) U9BM
L	0101-16390	-	0101-16402
XL	0101-16391	-	0101-16403
2X	0101-16392	0101-16398	0101-16404



Tactical vest

A



Back view



Back view

TECHDURA JACKETS

- Rugged stretch polyamide canvas material for enhanced durability
- Water-resistant for effective wet weather performance
- Stretch paneling for an optimized fit and superior freedom of movement
- Side torso vents provide enhanced airflow and breathability
- A detachable tactical, Techdura vest with extra pockets for convenient storage comes included with the jacket
- Reinforcements on elbows for additional durability
- Detachable raglan sleeves
- Magnetic auto lock buckle for a secure closure
- Hand pockets for real-world practicality



Back view

B



SIZE	(A) BLACK/SILVER	(B) BLACK/BROWN
S	2920-0732	2920-0738
M	2920-0733	2920-0739

SIZE	(A) BLACK/SILVER	(B) BLACK/BROWN
L	2920-0734	2920-0740
XL	2920-0735	2920-0741

SIZE	(A) BLACK/SILVER	(B) BLACK/BROWN
2X	2920-0736	2920-0742
3X	2920-0737	2920-0743



GP PLUS v4 LEATHER JACKETS

- Tech-Air® ready
- Race derived sport leather jacket, revolution of existing GP Plus v3 model
- Improved material selection with lighter weight
- Modernized look with refined detailing
- Race derived A-CS™ Plus stretch paneling provides increased flexibility and improved freedom of movement
- A-CS Plus provides high levels of abrasion- and tear-resistance, as well as high breathability, as well as a lower weight and profile than leather accordion paneling
- DFS shoulder kit with Nucleon Flex Plus shoulder armor provides impact protection and movement comfort

- GP-R Lite extended elbow armor and pre-curved race fit provide impact protection and natural pre-curved riding position comfort
- Detachable thermal vest 80 g and long direct opening vents for climate management
- Tested and certified to EN 1621-1:2012 Nucleon Flex Plus shoulder armor
- Tested and certified to EN 1621-1:2012 GP-R Lite Elbow armor
- The following standards apply to this product: EN 17092-3:2020 Class AA
- Available in men's sizes listed

SIZE	(A) BLACK/BLACK	(B) BLACK/WHITE
48	2810-4028	2810-4036
50	2810-4029	2810-4037
52	2810-4030	2810-4038

SIZE	(A) BLACK/BLACK	(B) BLACK/WHITE
54	2810-4031	2810-4039
56	2810-4032	2810-4040
58	2810-4033	2810-4041

SIZE	(A) BLACK/BLACK	(B) BLACK/WHITE
60	2810-4034	2810-4042
62	2810-4035	-



Back view



GP PLUS v4 LEATHER JACKET

- Race derived sport leather jacket
- Revolution of existing model
- Revised silhouette engineered for women
- Improved material selection with lighter weight
- Modernized look
- Refined detailing
- Race derived A-CS™ Plus stretch paneling provides increased flexibility and improved freedom of movement
- A-CS Plus provides high-levels of abrasion- and tear-resistance, as well as high breathability, as well as a lower weight and profile than leather accordion paneling
- DFS shoulder kit with Nucleon Flex Plus shoulder armor provides impact protection and movement comfort

- GP-R Lite extended elbow armor and pre-curved race fit provide impact protection and natural pre-curved riding position comfort
- Detachable thermal vest 80 g and long direct opening vents for climate management
- Tested and certified to EN 1621-1:2012 Nucleon Flex Plus shoulder armor
- Tested and certified to EN 1621-1:2012 GP-R Lite Elbow armor
- The following standards apply to this product: EN 17092-3:2020 - Class AA
- Available in women's sizes 38-46

SIZE	BLACK/BLACK	SIZE	BLACK/BLACK	SIZE	BLACK/BLACK
38	2813-1049	42	2813-1051	46	2813-1053
40	2813-1050	44	2813-1052		



COPPER v3 DENIM PANTS

- Protective riding denim re-edited with elevated details
- Regular comfort straight leg pants constructed with stretch cotton denim
- Aramid fiber reinforcement in knee and hip areas for enhanced protection against abrasion, cuts and tears
- Shaped back waist and curved leg for riding comfort
- Elevated finishing and trims details including tonal branding, refined stitching and proportions, as well as new labeling
- Adjustable Nucleon Flex Plus knee armor for high-levels of impact protection, with three positions for better knee protector positioning; also includes installed pockets for optional hip protection
- Two pockets on front and back for secure and convenient storage
- Additional small pocket on right leg for real world practicality
- Reflective details
- Tested and certified to EN 1621-1:2012 Nucleon Flex Plus knee armor
- The following standards apply to this product: fully certified riding garment to EN 17092-4:2020 – A Class
- Available in men's sizes 28-40



SIZE	(A) BLACK	(B) BLUE
28	2821-1484	2821-1491
30	2821-1485	2821-1492
32	2821-1486	2821-1493
34	2821-1487	2821-1494

SIZE	(A) BLACK	(B) BLUE
36	2821-1488	2821-1495
38	2821-1489	2821-1496
40	2821-1490	2821-1497



SPEEDFLIGHT SHOES

- The perfect shoes for short rides and commuting, while still easy to wear every day, all day long
- Constructed from a performance ripstop upper with seamless reinforcement panels and a molded, semi-rigid heel piece with injected foam
- Advanced and lightweight main chassis
- Alpinestars TPF Transversal Protection Frame midsole reinforces the shoe and is sandwiched between a dual-density rubber sole with front protective walls, a comfort layer, and the EVA durable, yet comfortable midsole with lateral stabilizers
- An asymmetric TPU heel counter for added protection and stability, plus an OrthoLite® removable insock for great breathability and all-day walking comfort are also incorporated into the sole



SIZE	(C) BLACK/BLACK	(D) BLACK/WHITE	(E) BLACK/BRIGHT RED/WHITE
6	3405-3258	3405-3271	3405-3284
7	3405-3259	3405-3272	3405-3285
8	3405-3260	3405-3273	3405-3286
8.5	3405-3261	3405-3274	3405-3287
9	3405-3262	3405-3275	3405-3288
9.5	3405-3263	3405-3276	3405-3289
10	3405-3264	3405-3277	3405-3290

- The sole itself also features a more “aggressive” 10 mm drop, meaning the height difference between the rider's heel and toes, allowing for great walking comfort off the bike
- The Speedflight provides a “cradled” fit and enhances foot stability for walking comfort, as well as riding protection and confidence
- The following standards apply to this product: EN13634:2017
- Available in men's sizes 6-14

SIZE	(C) BLACK/BLACK	(D) BLACK/WHITE	(E) BLACK/BRIGHT RED/WHITE
10.5	3405-3265	3405-3278	3405-3291
11	3405-3266	3405-3279	3405-3292
11.5	3405-3267	3405-3280	3405-3293
12	3405-3268	3405-3281	3405-3294
13	3405-3269	3405-3282	3405-3295
14	3405-3270	3405-3283	-



Back view

A



C



B

D

SECTOR JERSEYS

- Raglan-style sleeves for optimal mobility
- Moisture-wicking material keeps you dry
- Stretch panels in cuffs and collar
- No-fade sublimated graphics
- Heat transfer neck label
- Drop-tail design helps keep jersey tucked in
- See size chart below before ordering

DIGI CAMO JERSEYS

SIZE	(A) BLACK/CAMO	(B) FOREST GREEN/CAMO
S	2910-7566	2910-7573
M	2910-7567	2910-7574
L	2910-7568	2910-7575
XL	2910-7569	2910-7576
2X	2910-7570	2910-7577
3X	2910-7571	2910-7578
4X	2910-7572	2910-7579

SECTOR PANTS

- Pre-curved shape for maximum comfort
- Double and triple stitching for durability
- Abrasion-tolerant materials
- Buckle closure
- Purpose-built TPR features
- Athletic mesh inner liner
- See size chart below before ordering

DIGI CAMO PANTS

SIZE	(C) BLACK/CAMO	(D) FOREST GREEN/CAMO
Europe 44 (USA 28)	2901-11027	2901-11038
Europe 46 (USA 30)	2901-11028	2901-11039
Europe 48 (USA 32)	2901-11029	2901-11040
Europe 50 (USA 34)	2901-11030	2901-11041
Europe 52 (USA 36)	2901-11031	2901-11042
Europe 54 (USA 38)	2901-11032	2901-11043
Europe 56 (USA 40)	2901-11033	2901-11044
Europe 58 (USA 42)	2901-11034	2901-11045
Europe 60 (USA 44)	2901-11035	2901-11046
Europe 62 (USA 46)	2901-11036	2901-11047
Europe 64 (USA 48)	2901-11037	2901-11048

MEN'S RIDING GEAR SIZE CHARTS

MEN'S JERSEYS

SIZE	CHEST GIRTH	SIZE	CHEST GIRTH
S	81 cm-86,5 cm (32"-34")	L	96,5 cm-101,5 cm (38"-40")
M	90 cm-94 cm (35"-37")	XL	104 cm-109 cm (41"-43")

SIZE	CHEST GIRTH	SIZE	CHEST GIRTH
2X	112 cm-117 cm (44"-46")	4X	128cm-136cm (51-53")
3X	119 cm-127 cm (47"-50")		

MEN'S OFFROAD PANTS

SIZE	WAIST	INSEAM
Europe 44 (USA 28)	68,5 cm-71 cm (27"-28")	75 cm (29,5")
Europe 46 (USA 30)	73,5 cm-76 cm (29"-30")	76 cm (30")
Europe 48 (USA 32)	79 cm-81 cm (31"-32")	77,5 cm (30,5")
Europe 50 (USA 34)	84 cm-86 cm (33"-34")	79 cm (31")
Europe 52 (USA 36)	89 cm-91 cm (35"-36")	81 cm (32")

SIZE	WAIST	INSEAM
Europe 54 (USA 38)	94 cm-97 cm (37"-38")	81 cm (32")
Europe 56 (USA 40)	99 cm-102 cm (39"-40")	81 cm (32")
Europe 58 (USA 42)	104 cm-107 cm (41"-42")	81 cm (32")
Europe 60 (USA 44)	109 cm-112 cm (43"-44")	81 cm (32")



Back view

A



C



D

WOMEN'S PRIME JERSEYS

- Hybrid fit with set-in style sleeves
- Polyester/spandex sleeves feature four-way stretch and laser perforation enhanced airflow
- Seamless, bonded collar and cuffs
- Minimal seams for maximum comfort
- Laser cut holes for increased ventilation in key areas
- Moisture-wicking material keeps you dry
- Tail silicone print helps keep jersey tucked in
- Flat stitch seams minimize irritation
- Engineered for performance athletic fit
- See size chart below before ordering

BLAZE JERSEYS

SIZE	(A) BLACK/MINT	(B) BLUE STEEL/VINTAGE WHITE
XS	2911-0278	2911-0283
S	2911-0279	2911-0284
M	2911-0280	2911-0285
L	2911-0281	2911-0286
XL	2911-0282	2911-0287

WOMEN'S RIDING GEAR SIZE CHARTS

WOMEN'S JERSEYS

SIZE	CHEST	BODY LENGTH	SLEEVE LENGTH
XS	91 cm (36")	73,5 cm (29")	63,5 cm (25")
S	97 cm (38")	75 cm (29,5")	67,5 cm (26,5")
M	102 cm (40")	75 cm (29,5")	71 cm (28")

WOMEN'S PANTS

SIZE	WAIST	INSEAM
Europe 36/37 (USA 1/2)	61 cm - 63,5 cm (24" - 25")	66 cm (26")
Europe 38/39 (USA 3/4)	63,5 cm - 66 cm (25" - 26")	67,5 cm (26,5")
Europe 40/41 (USA 5/6)	66 cm - 68,5 cm (26" - 27")	69 cm (27,3")
Europe 42/43 (USA 7/8)	68,5 cm - 71 cm (27" - 28")	71 cm (28")

WOMEN'S PRIME PANTS

- Nylon In-Motion fabric main construction provides mobility and durability
- Precise-fit ratchet closure system at waist
- Laser cut holes for increased ventilation in key areas
- Strategically placed vented mesh panel
- Premium grade full grain leather inner knee panel
- Athletic mesh liner with spandex stretch panel
- Ultra-lightweight pre-curved chassis design
- Side cinch system for precision waist adjustment
- See size chart below before ordering

BLAZE PANTS

SIZE	(C) BLACK/MINT	(D) BLUE STEEL/VINTAGE WHITE
Europe 37/38 (USA 1/2)	2902-0349	2902-0356
Europe 38/39 (USA 3/4)	2902-0350	2902-0357
Europe 40/41 (USA 5/6)	2902-0351	2902-0358
Europe 42/43 (USA 7/8)	2902-0352	2902-0359
Europe 44/45 (USA 9/10)	2902-0353	2902-0360
Europe 46/47 (USA 11/12)	2902-0354	2902-0361
Europe 48/49 (USA 13/14)	2902-0355	2902-0362

SIZE	CHEST	BODY LENGTH	SLEEVE LENGTH
L	107 cm (42")	76 cm (30")	75 cm (29,5")
XL	112 cm (44")	76 cm (30")	76 cm (30")

SIZE	WAIST	INSEAM
Europe 44/45 (USA 9/10)	71 cm - 75 cm (28" - 29,5")	73 cm (28,8")
Europe 46/47 (USA 11/12)	75 cm - 79 cm (29,5" - 31")	75 cm (29,5")
Europe 48/49 (USA 13/14)	79 cm - 82,5 cm (31" - 32,5")	77 cm (30,3")



YOUTH SECTOR JERSEYS

- Raglan-style sleeves for optimal mobility
- Moisture-wicking material keeps you dry
- Stretch panels in cuffs and collar
- No-fade sublimated graphics
- Heat-transferred neck label
- Drop-tail design helps keep jersey tucked in
- See size chart below before ordering

DIGI CAMO JERSEYS

SIZE	(A) BLACK/CAMO	(B) FOREST GREEN/CAMO
XXS	2912-2394	2912-2400
XS	2912-2395	2912-2401
S	2912-2396	2912-2402
M	2912-2397	2912-2403
L	2912-2398	2912-2404
XL	2912-2399	2912-2405

YOUTH RIDING GEAR SIZE CHARTS

YOUTH JERSEYS

SIZE	CHEST	BODY LENGTH	SLEEVE LENGTH
XXS	66 cm (26")	52,1 cm (20,5")	47 cm (18,5")
XS	71,1 cm (28")	55,9 cm (22")	50,8 cm (20")
S	76,2 cm (30")	59,7 cm (23,5")	54,6 cm (21,5")

YOUTH PANTS

SIZE	WAIST	INSEAM
Europe 34 (USA 18)	43,2 cm-45,7 cm (17"-18")	41,2 cm (16,2")
Europe 36 (USA 20)	48,3 cm-50,8 cm (19"-20")	51,6 cm (20,3")
Europe 38 (USA 22)	53,3 cm-55,9 cm (21"-22")	56,6 cm (22,3")



YOUTH SECTOR PANTS

- Stretch panels in rear waist and saddle for comfort
- Pre-curved knee
- 500D Cordura® saddle and leather inner knee panels
- Purpose-built TPR features
- Performance mesh liner
- See size chart below before ordering

DIGI CAMO PANTS

SIZE	(C) BLACK/CAMO	(D) FOREST GREEN/CAMO
Europe 34 (USA 18)	2903-2409	2903-2415
Europe 36 (USA 20)	2903-2410	2903-2416
Europe 38 (USA 22)	2903-2411	2903-2417
Europe 40 (USA 24)	2903-2412	2903-2418
Europe 42 (USA 26)	2903-2413	2903-2419
Europe 44 (USA 28)	2903-2414	2903-2420

SIZE	CHEST	BODY LENGTH	SLEEVE LENGTH
M	81,3 cm (32")	62,2 cm (24,5")	58,4 cm (23")
L	86,4 cm (34")	66 cm (26")	62,2 cm (24,5")
XL	91,4 cm (36")	69,9 cm (27,5")	66 cm (26")

SIZE	WAIST	INSEAM
Europe 40 (USA 24)	58,4 cm-61 cm (23"-24")	59,9 cm (23,6")
Europe 42 (USA 26)	63,5 cm-66 cm (25"-26")	63,8 cm (25,1")
Europe 44 (USA 28)	68,5 cm-71 cm (27"-28")	66 cm (26")



SECTOR GLOVES

- Fitted stretch backhand panel for lightweight comfort
- Notched wrist opening provides quick entry
- Hook-and-loop closure system
- Perforated palm keeps hands cool
- Four-way stretch finger gussets
- Silicone-printed palm graphics
- Wrapped thumb and gripping points

SIZE	ACID
XS	3330-7255
S	3330-7256
M	3330-7257

YOUTH SECTOR GLOVES

- Fitted stretch backhand panel
- Lightly padded palm
- Mesh construction and perforated palm
- Notched wrist opening
- Silicone-treated fingertips
- Hook-and-loop wrist closure system
- Wrapped thumb and gripping points
- Four-way stretch finger gussets

SIZE	ACID
2XS	3332-1733
XS	3332-1734
S	3332-1735



YOUTH BLITZ XR BOOTS

- Adjusted boot height and smaller sizing tailored to younger riders
- Padded mesh interior improves breathability
- Injection molded positive lock buckles
- Injection molded medial abrasion plate with integrated shift protection
- Contoured gaiter for increased mobility and comfort
- Custom molded lugged outsole with a steel shank insert
- Tested and certified according to standard EN 13634:2017



SIZE	(A) BLACK/WHITE	(B) BLUE/BLACK	(C) GRAY/CHARCOAL	(D) WHITE/BLACK	(E) RED/CHARCOAL	(F) ACID/BLACK
Europe 32 (USA 1)	3411-0724	3411-0731	3411-0738	3411-0745	3411-0752	3411-0759
Europe 33 (USA 2)	3411-0725	3411-0732	3411-0739	3411-0746	3411-0753	3411-0760
Europe 34 (USA 3)	3411-0726	3411-0733	3411-0740	3411-0747	3411-0754	3411-0761
Europe 36 (USA 4)	3411-0727	3411-0734	3411-0741	3411-0748	3411-0755	3411-0762
Europe 37 (USA 5)	3411-0728	3411-0735	3411-0742	3411-0749	3411-0756	3411-0763
Europe 38 (USA 6)	3411-0729	3411-0736	3411-0743	3411-0750	3411-0757	3411-0764
Europe 39 (USA 7)	3411-0730	3411-0737	3411-0744	3411-0751	3411-0758	3411-0765



SLAM BACKPACK

- Large main compartment with padded laptop sleeve
- Microfleece-lined glasses/media pocket
- Internal mesh pocket
- Reverse face YKK® water-resistant, zip-on front
- THOR reflective logo
- 1200D ballistic polyester/600D with PU coating throughout
- Dimensions: 48,5 cm L x 28 cm W x 18 cm D (19" x 11" x 7")

DESCRIPTION

Slam backpack

PART

3517-0522



HELMET BAG

- Microfleece-lined helmet bag
- Double-stitched, reinforced handle
- Ventilation holes promote airflow and decrease odor
- 1200-D ballistic polyester shell
- Dimensions: 40,5 cm L x 25,5 cm W x 30,5 cm H (16" x 10" x 12")

DESCRIPTION

Helmet bag

PART

3514-0047

GOGGLE BAG

- Easily stores four goggles between adjustable foam padded inserts
- Additional pockets to hold extra lenses, tear-offs, rolls of film and accessories
- Double stitched reinforced handle
- 1200-D ballistic polyester shell with nylon support piece that provides structure
- Stress-free way to organize your eyewear
- Dimensions: 40,5 cm L x 24 cm W x 11,5 cm D (16" x 9,5" x 4,5")



DESCRIPTION

Charcoal/heather

PART

3512-0312