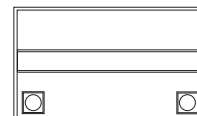


SLA FACTORY-ACTIVATED AGM MAINTENANCE-FREE BATTERY



- AGM construction (Absorbed Glass Material)
- VRLA battery (Valve Regulated Lead Acid)
- Sealed and Factory-Activated
- Spill-proof design
- Multi-positional fitment
- Ready and easy to use
- Increased power and extended life
- Extreme vibration resistance



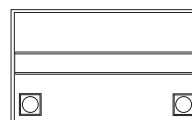
YUASA REFERENCE #	CAPACITY AH (10HR)	CAPACITY AH (20HR)	CCA (EN) A (-18°C)	LENGTH (MM)	WIDTH (MM)	HEIGHT (MM)	APPROX. WEIGHT (KG)	TERMINAL CONFIGURATION	PART #
YT12-10Z	10	10,5	180	194	59	112	3,20	+ -	2113-0918

LITHIUM LIFEPO4 BATTERIES

- Innovative lithium-ion motorcycle and powersport batteries
- Designed for the most demanding riders looking for higher performance, safer performance, faster acceleration, reduced weight and a much longer battery life
- Very low self-discharge provides the possibility to start an engine after a very long period of storage, even in very cold temperature conditions
- Robust brass terminals for enhanced electrical performance
- Super fast charging capabilities
- Multi-position mounting (up to 180°)
- Very safe and environmentally friendly
- Up to 70% lighter than lead acid batteries
- Waterproof design
- Heat temperature resistance up to 230 °C
- Ready to use; no need for preparation, just plug and play



2113-0791



YUASA REFERENCE #	CAPACITY (AH/10HR)	POWER (WH)	CCA (EN)	LENGTH (MM)	WIDTH (MM)	HEIGHT (MM)	TERMINAL CONFIGURATION	BS BATTERY PART NO.	PART #
Replacement for Honda Original Equipment - HY110	3	36	210	114	70	105	- +	BSLi-14	2113-0915
YTX20L, YTX20HL, YTX24HL, YTX20L-BS, YTX20HL-BS, YTX24HL-BS, Y50-N18L-A, Y50-N18L-A2/A3/AT, 51913, 51814	6	72	360	148	86	105	- +	BSLi-10	2113-0791
51913	8	96	560	183	79	170	- +	BSLi-13	2113-0912

PB-02 POWER BOX JUMP STARTER

- Perfect back-up power solution able to deliver 600A for jump starting vehicles (motorcycles, cars, boats and more), charge USB devices (smartphones or tablets) and offer emergency lighting
- Compact and powerful lithium booster rated at 600A (1200A peak current)
- Up to 20 jump starts in one charge
- Designed for gas and diesel engines
- Very safe: smart cable with spark-proof connection and reverse polarity protection
- Power supply for small electronic devices via their USB ports (most of smartphones, earphones, portable gaming devices, MP3/MP4 players can be charged with the included accessories)
- LED flashlight function with 3 modes (powerful constant light/strobe/SOS)
- LED display with battery state of charging indication and output port used
- Compatible with lead acid batteries (SLA, GEL, AGM, EFB, MF, DRY, Ca/Ca)



DESCRIPTION	PART #
Power Box PB-02	2113-0913



BST 1000 LEAD ACID AND LITHIUM BATTERY TESTER

- For lead acid (flooded, AGM flat plate, AGM spirale, GEL, EFB) and lithium batteries
- For all 12V vehicle and motorcycle batteries
- Five battery tests: cold cranking amps, voltage, internal resistance, health, starting
- Vehicle charging and cranking system test
- Easy to read large LCD screen
- Print function via PC printer
- Multiple languages: English, German, Spanish, French, Dutch and Italian
- Short circuit and polarity reverse connection protections
- Useful, compact and delivered with clamp set, pouch protection and a USB cable to connect the tester to a computer for printing out all the diagnostics



DESCRIPTION	PART #
BST 1000 lead acid and lithium battery tester	2113-0914



PRO MX SCISSOR LIFT

- Professional-quality hydraulic scissor lift for dirt bikes from 50cc-650cc
- Heavy-duty steel frame construction will last forever
- No bending over – two foot pedals incorporated to lift and lower stand
- No loose parts – attached secure footpeg springs tighten automatically to pegs when stand rises to help stabilize bike
- Raises between 35,5 cm to 84 cm (14" to 33"), lifts motorcycle to a comfortable work height
- Large 35,5 cm x 40,5 cm (14" x 16") oil- and gas-resistant top
- Access hole in top measuring 76 mm x 18 cm (3" x 7")
- Adjustable Safety Pin sets at multiple heights allowing for extra security
- Black and silver powdercoated finish
- 181 kg (400-lb) max lift capacity



DESCRIPTION	PART #
Pro MX Scissor lift	4110-0022



4110-0014



4110-0015



4110-0063



P-12 LIFT STANDS

- Rubber top with embossed logo and raised bumpy non-slip surface
- Most adjustable lift stand available
- Adjusts to 11 height positions from 24 cm to 37 cm high (9¹/₂" to 14¹/₂")
- Designed for dirt bikes from 50-650cc
- Easily lifts bikes by stepping on foot lever
- Even youth riders can put their own bike on this stand
- Foot-activated release trigger with nylon slider block

- Made of high-quality aircraft aluminum
- Large heavy-duty top lifts both wheels off the ground
- Large recessed rivets won't break off
- Super-strong lower legs constructed from box aluminum tubing
- Legs are arched with flat ends for stability on uneven ground
- Leg stance is 40,5 cm (16") wide for maximum stability
- Available in silver anodized or two hard-coat factory colors: black or orange

COLOR	PART #	COLOR	PART #	COLOR	PART #
Silver	4110-0014	Black	4110-0015	Orange	4110-0063



MX STEEL LIFTS

- Lifts both bike wheels off the ground when in raised position
- Lowers easily by lifting foot pedal with foot
- Constructed of box steel tubing for maximum strength
- Semi-gloss painted finish
- Finished with rubber end caps installed on all box tubing ends
- Aircraft rivets secure a non-slip rubber top to a 26,5 cm x 30,5 cm (10 1/2" x 12") reinforced steel top
- 35,5 cm x 38 cm (14" x 15") H-shaped base for maximum stability
- Lowest height is 28,5 cm (11 1/4") and raises to 44 cm (17 1/4") by stepping on foot pedal
- Weighs only 6,4 kg (14 lb)



4110-0034

COLOR

Black

PART

4110-0034

White

4110-0077

GP3 3-IN-1 LIFT STAND

- Universal sport bike triple tree lift stand
- Multi-purpose, can be converted into rear swingarm lift stand; simply remove two bolts, upper half of frame and purchase stet rear lift adapter kit, sold separately
- Two different accessory kits available, spool type or under swingarm paddle lift
- Triple tree version lifts bike from bottom of steering stem, allowing front wheel and fork legs to be removed during maintenance
- Accommodates most sport bikes with included pins to fit hole in steering stem; includes 13 mm, 15 mm, 17 mm, 18 mm, 20 mm and 27 mm pins
- Sturdy frame includes four solid urethane wheels with sealed roller bearings, providing a smooth and easy lifting action
- Frame constructed of heavy-duty carbon steel with a gloss black powdercoated finish

NOTE: GP3 3-in-1 lift stand must be used in conjunction with bike stabilized on center stand or with a rear swingarm lift stand.



DESCRIPTION

GP3 3-in-1 lift stand

PART

4101-0351

LAY-OVER STAND

- Safer and more secure method for holding a bike in a leaning position; resting bikes on MX stands can tear grips and damage expensive upper fork tubes
- Keeps bike off the ground, eliminating the chance of damaging valuable components
- Choose from seven grip height adjustments from 33 cm (13") to 48,5 cm (19") tall – works with most mini-bikes to full-size off-road bikes
- Notched grip cradle design compatible with Bark Busters
- Aluminum and stainless steel construction – rust-resistant and great for power-washing those hard-to-reach areas
- Easier access to front and rear rebound suspension adjusters
- Quick clutch maintenance without draining transmission oil – saves time between races
- Easier way to install or remove engine skid plates
- Lightweight and folds compact, easy to transport



DESCRIPTION

Lay-over stand

PART

4101-0350

CAM CHAINS

- Made from the highest-quality select steel alloys
- Lightweight and great durability
- Features precision solid bushings and shot-peened, providing maximum strength
- Made to meet or exceed OEM standards
- Silent chain design



0925-1493



FITS MODEL	PART #
HONDA	
CRF450R 02-08	0925-1493
KAWASAKI	
KX250F 04-16	0925-1498

FITS MODEL	PART #
SUZUKI	
DR250S/SE 90-95	0925-1495
RM-Z250 04-20	0925-1498
DR350S/SE 90-99	0925-1495

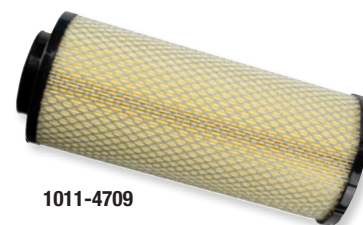
FITS MODEL	PART #
YAMAHA	
WR250F 01-13	0925-1498
YZ250F 01-13	0925-1498
TT600 83-86	0925-1497
XT600 84-89	0925-1497

SPECIFICATIONS

PART #	INNER WIDTH	OVERALL WIDTH	PITCH	PRESSURE ANGLE	# OF LINKS
0925-1493	7,15 mm	10,9 mm	6,35 mm	60 degree	112
0925-1495	5,1 mm	8,25 mm	6,35 mm	60 degree	108
0925-1497	7,1 mm	10,85 mm	6,35 mm	60 degree	126
0925-1498	5,1 mm	8,25 mm	6,35 mm	60 degree	114

AIR FILTERS

- Bonded, two-layer foam designed for maximum protection and airflow
- Coarse outer foam traps large particles while fine inner foam catches the finest dust
- Flexible glue is used on all seams to prevent cracking
- Super Seal neoprene ring keeps out water and provides a no-grease seal
- Exclusive 0,65 foam



1011-4709

FITS MODEL	DRY PART #
CF MOTO	
UForce 1000 CF/XL 19-22	1011-4709
ZForce 950 Sport 20-22	1011-4710

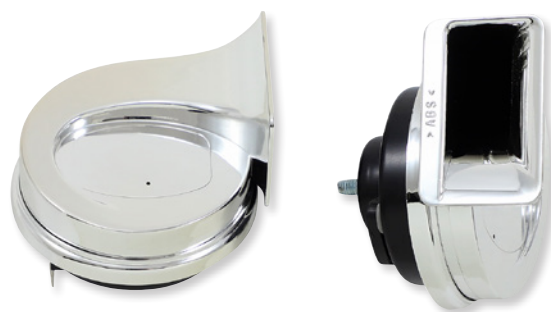
FITS MODEL	DRY PART #
CF MOTO (CONT)	
800 All Models 13-22	1011-4711
600 All Models 22	1011-4711

FITS MODEL	DRY PART #
CF MOTO (CONT)	
500 All Models 15- 22	1011-4711
400 All Models 16-22	1011-4711



MAGNUM ELECTRIC HORN SET FOR CAN-AM SPYDER RT 14-23

- With an output of 118 decibels, these electric horns are the loudest on the market; over three times as loud as most stock horns and an economical choice
- Easy bolt-on replacement and electrical hookup for most bikes
- Horns measure 3" x 3" x 3" each
- Plug-and-play wiring with specific mounting hardware kits available for most bikes
- Set includes two horns (one high and one low tone), mounting brackets and installation instructions
- Hardware kit includes fuse, 30A relay, all wiring, mounting hardware and instructions; multi-application hardware kit (sold separately) works with most other models



- Wiring kit includes relay, fuse, wiring and mounting hardware, along with detailed installation instructions to install Magnum Electric Horn Set PART #2107-0067

HORN SET

DESCRIPTION	PART #
Magnum electric horn set	2107-0324

LED REPLACEMENT BULBS FOR H6M/P15D BULBS

- 2000 lumens
- Available in 6000K bright white or amber for dusty and foggy conditions
- Sold each

BULB COLOR	PART #
Amber	2060-0801



2060-0802

BULB COLOR	PART #
White	2060-0802



Includes clear & RST blue Icon Optics™ shields
 Includes dark smoke DropShield™
 Includes RST blue spoiler



ECE 22.06

AIRFORM™

- Injection-molded polycarbonate shell for strength
- Internal airflow geometry and continuous venting system keep rider cool
- Fog-free Icon Optics™ shield with Rapid-Release™ system
- ProLock™ positive shield-locking system
- TracShield™ shield with tear-off posts available; sold separately
- Internal Dropshield™ with exterior switch
- Comfortable sculpted neck roll
- Removable molded breath deflector
- Fully removable Hydradry™ 3-piece moisture wicking liner
- Internal speaker pockets work with Icon's R.A.U. Bluetooth® device
- Rubatone is a matte-finish rubberized paint developed to match your riding gear

FEVERDREAM

SIZE	BLUE	SIZE	BLUE	SIZE	BLUE	SIZE	BLUE
XS	0101-16100	M	0101-16102	XL	0101-16104	3X	0101-16106
S	0101-16101	L	0101-16103	2X	0101-16105		

- See helmet size guide on page 7 before ordering
- All World Standard meets or exceeds the following: DOT FMVSS 218 (USA), ECE 22.06 (Europe) and PSC (Japan) helmet safety standards

NOTE: Does not ship with PSC or MFJ certification stickers unless purchased from an authorized dealer in that country.

NOTE: The Dropshield™ visor must only be used while the main face shield is in the fully closed position.



Includes RST clear FliteShield™ and RST blue ForceShield™
Includes dark smoke DropShield™

ECE 22.06



AIRFLITE™

- Injection-molded polycarbonate shell for strength
- Multiple oversized intake and exhaust ports are strategically placed to keep you cool and comfortable, including four intake vents, MX-inspired chinbar vent and two exhaust ports that channel air between the comfort liner and the protective, energy-absorbing EPS foam liner
- Quick-change, fog-free outer FliteShield™ keeps debris away, while the internal, interchangeable DropShield™ keeps the sun in check with a flip of a switch
- Removable molded breath deflector and chin curtain
- Moisture-wicking Hydradry™ interior is fully removable and washable

- Both wind drag and weight are decreased by sculpting the traditional neckline of the Airflite™ to avoid jacket or suit interference
- See helmet size guide on page 7 before ordering
- Meets DOT FMVSS 218 (US), ECE 22.06 (Europe), SAI AS1698:2006 (Australia) and PSC (Japan) safety and testing standards

NOTE: Does not ship with SAI, PSC OR MFJ certification stickers unless purchased from an authorized dealer in that country.

FLYBOY

SIZE	BLUE	SIZE	BLUE	SIZE	BLUE	SIZE	BLUE
XS	0101-16010	M	0101-16012	XL	0101-16014	3X	0101-16016
S	0101-16011	L	0101-16013	2X	0101-16015		

AIRFLITE™ continued on next page



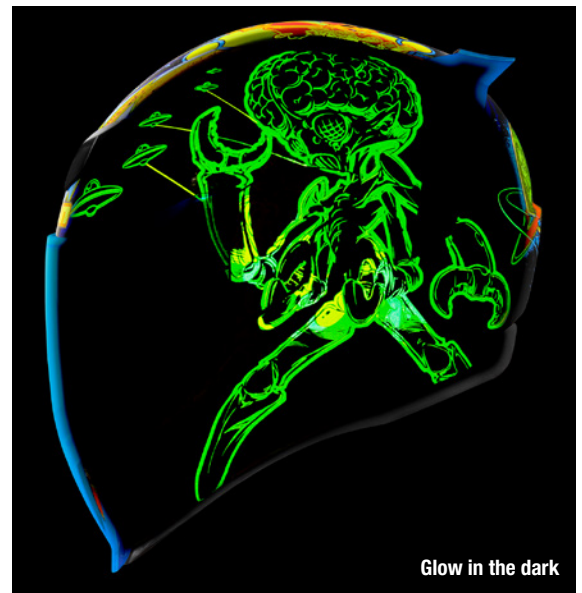
ECE 22.06

AIRFLITE™ (CONT)



Includes RST clear FliteShield™ and RST blue ForceShield™

Includes dark smoke DropShield™



Glow in the dark

BUGOID-BLITZ

SIZE	BLUE	SIZE	BLUE	SIZE	BLUE	SIZE	BLUE
XS	0101-15546	M	0101-15548	XL	0101-15550	3X	0101-15552
S	0101-15547	L	0101-15549	2X	0101-15551		

ICON HELMET SIZE CHART

SIZE	HAT SIZE	INCHES	CENTIMETERS	SIZE	HAT SIZE	INCHES	CENTIMETERS
XXS	6 ³ / ₈ - 6 ¹ / ₂	20 ¹ / ₈ - 20 ¹ / ₂	51 - 52	L	7 ³ / ₈ - 7 ¹ / ₂	23 ¹ / ₈ - 23 ¹ / ₂	59 - 60
XS	6 ⁵ / ₈ - 6 ³ / ₄	20 ⁷ / ₈ - 21 ¹ / ₄	53 - 54	XL	7 ⁵ / ₈ - 7 ³ / ₄	24 - 24 ³ / ₈	61 - 62
S	6 ⁷ / ₈ - 7	21 ⁵ / ₈ - 22	55 - 56	2X	7 ⁷ / ₈ - 8	24 ³ / ₄ - 25 ¹ / ₈	63 - 64
M	7 ¹ / ₈ - 7 ¹ / ₄	22 ³ / ₈ - 22 ³ / ₄	57 - 58	3X	8 ¹ / ₈ - 8 ¹ / ₄	25 ¹ / ₂ - 26	65 - 66



ECE 22.06



SECTOR 2 HELMETS

- Dual-density EPS liner features extensive intake and exhaust ventilation
- High-flow mouth vent with filter for air intake
- Injection-molded ABS shell
- High-flow mouth vent with filter for air intake
- Large eye port for increased field of view
- Flexible rubber nose piece
- Vented visor to reduce lift
- Aerodynamic shell design
- See helmet size guide on page 9 before ordering
- The following standards apply to this product:
ECE R 22.06 approved

CARVE

SIZE	(A) BLACK/ACID	(B) RED/WHITE	(C) BLACK/WHITE	(D) CHARCOAL/ORANGE	(E) WHITE/BLUE
XS	0110-8097	0110-8105	0110-8113	0110-8121	0110-8129
S	0110-8098	0110-8106	0110-8114	0110-8122	0110-8130
M	0110-8099	0110-8107	0110-8115	0110-8123	0110-8131
L	0110-8100	0110-8108	0110-8116	0110-8124	0110-8132
XL	0110-8101	0110-8109	0110-8117	0110-8125	0110-8133
2X	0110-8102	0110-8110	0110-8118	0110-8126	0110-8134

SECTOR 2 HELMETS continued on next page



ECE 22.06

SECTOR 2 HELMETS (CONT)



COMBAT

SIZE	(A) MIDNIGHT/ORANGE	(B) ARMY/BLACK
XS	0110-8137	0110-8145
S	0110-8138	0110-8146
M	0110-8139	0110-8147

SIZE	(A) MIDNIGHT/ORANGE	(B) ARMY/BLACK
L	0110-8140	0110-8148
XL	0110-8141	0110-8149
2X	0110-8142	0110-8150



SIZE	(C) BLACKOUT	(D) WHITEOUT
XS	0110-8153	0110-8161
S	0110-8154	0110-8162

SIZE	(C) BLACKOUT	(D) WHITEOUT
M	0110-8155	0110-8163
L	0110-8156	0110-8164

SIZE	(C) BLACKOUT	(D) WHITEOUT
XL	0110-8157	0110-8165
2X	0110-8158	0110-8166

THOR HELMET SIZE CHART

SIZE	HAT SIZE	CENTIMETERS	INCHES
XS	6 ⁵ / ₈ - 6 ³ / ₄	53 - 54	20 ⁷ / ₈ - 21 ¹ / ₄
S	6 ⁷ / ₈ - 7	55 - 56	21 ³ / ₈ - 22
M	7 ¹ / ₈ - 7 ¹ / ₄	57 - 58	22 ¹ / ₈ - 22 ⁷ / ₈
L	7 ³ / ₈ - 7 ¹ / ₂	59 - 60	23 ¹ / ₂ - 23 ⁷ / ₈

SIZE	HAT SIZE	CENTIMETERS	INCHES
XL	7 ⁵ / ₈ - 7 ³ / ₄	61 - 62	24 - 24 ¹ / ₂
2X	7 ⁷ / ₈ - 8	63 - 64	24 ⁵ / ₈ - 25 ¹ / ₂
3X	8 - 8 ¹ / ₈	65 - 66	25 ⁵ / ₈ - 26
4X	8 ¹ / ₄ - 8 ³ / ₈	67 - 68	26 ³ / ₈ - 26 ³ / ₄



ECE 22.06



S-M10 SUPERTECH HELMETS

- Lightweight outer shell is constructed from technologically advanced composite materials in four sizes to ensure a superior fit
- Fitted with E-2, the latest generation of MIPS, an integrated low-friction layer designed to reduce rotational motion transferred to the brain from angled impacts to the head
- Multiple-density inner helmet liner
- Visor is attached to helmet shell with patented system that allows easy release in case of an impact
- Two visors supplied with helmet – one Regular height and one Super High height
- Alpinestars patented A-Head adjustable-height top interior helmet pad height
- Superior ventilation system utilizes 19 intake and 5 exhaust ports
- Helmet side shell shape combined with soft EPP foam prevents damage to collarbone in event of crash
- Emergency release and removable cheek pads
- 3D contoured foam
- Removable comfort liner uses anti-moisture and antibacterial fabrics
- Hydration system prepared
- E-Ject prepared
- The following standards apply to this product: ECE R 22.06 approved

SOLIDS

SIZE	(A) BLACK GLOSSY CARBON	(B) WHITE GLOSSY
XS	0110-8337	0110-8343
S	0110-8338	0110-8344
M	0110-8339	0110-8345
L	0110-8340	0110-8346
XL	0110-8341	0110-8347
2X	0110-8342	0110-8348

FAME

SIZE	(C) BLACK CARBON M&G
S	0110-8349
M	0110-8350
L	0110-8351
XL	0110-8352

AEON

SIZE	(D) BRIGHT RED/BLUE GLOSSY
S	0110-8377
M	0110-8378
L	0110-8379
XL	0110-8380

S-M10 SUPERTECH HELMETS continued on next page



ECE 22.06



S-M10 SUPERTECH HELMETS (CONT)



AMPRESS

SIZE	(A) BLACK/WHITE MATTE	(B) BLACK/YELLOW GLOSSY
S	0110-8353	0110-8357
M	0110-8354	0110-8358

SIZE	(A) BLACK/WHITE MATTE	(B) BLACK/YELLOW GLOSSY
L	0110-8355	0110-8359
XL	0110-8356	0110-8360



FLOOD

SIZE	(C) ORANGE/SILVER	(D) RED/FLUO RED
S	0110-8361	0110-8365
M	0110-8362	0110-8366

SIZE	(C) ORANGE/SILVER	(D) RED/FLUO RED
L	0110-8363	0110-8367
XL	0110-8364	0110-8368



UNITE

SIZE	(E) RED/WHITE GLOSSY	(F) FLUO YELLOW/BLACK/DIVA PINK GLOSSY
S	0110-8369	0110-8373
M	0110-8370	0110-8374

SIZE	(E) RED/WHITE GLOSSY	(F) FLUO YELLOW/BLACK/DIVA PINK GLOSSY
L	0110-8371	0110-8375
XL	0110-8372	0110-8376



ECE 22.06



A



B



SM-5 HELMETS

- Constructed from a special lightweight and impact resistant thermo-injected polymer results in a significantly lighter helmet with increased structural strength and outer shell uniformity in two outer shell sizes
- Inner shell includes multi-density advanced EPS construction for optimal impact absorption performance in three sizes
- Features two concepts for impact energy management including a resin-coated inner shell surface that noticeably improves impact resistance and reduces linear acceleration values and an elastic joint to connect the helmet's inner shell and comfort liner to move independently in a crash scenario with an oblique impact, thereby spreading the energy forces from an impact, reducing rotational acceleration
- Uses Alpinestars Emergency Release System (ERS) consisting of removable cheek pads for safe, quick, easy and safe removal of the helmet by trained medical professionals/emergency responders in the event of a crash
- The ERS features easy to locate pull-tabs for rapid release of the cheek pads, thus minimizing risk of additional injury

SOLIDS

SIZE	(A) BLACK MATTE	(B) WHITE GLOSSY
XS	0110-8381	0110-8387
S	0110-8382	0110-8388
M	0110-8383	0110-8389

- Includes a multi-angle, quick-release visor system that is flush over the helmet's shell to diminish the visor protrusion from the helmet thereby enhancing safety, doesn't use screws used in the visor for increased levels of safety and convenience to be easily adjusted and allows for ease of detachment from and reconnection to the helmet in order to facilitate helmet cleaning and maintenance
- Designed to offer exceptional ventilation to prevent overheating on warm track/trail days, with the inner air network channeling combining with the outer-shell's multi-air inlets and exhaust ports for effective ventilation and high levels of heat transfer exchange
- Hydration tube compatible channels are intelligently integrated into the helmet's cheek pads for convenience and performance
- The following standards apply to this product: ECE R 22.06 certified

SIZE	(A) BLACK MATTE	(B) WHITE GLOSSY
L	0110-8384	0110-8390
XL	0110-8385	0110-8391
2X	0110-8386	0110-8392

SM-5 HELMETS continued on next page



ECE 22.06



SM-5 HELMETS (CONT)



B



A



C



ACTION 2

SIZE	(A) BLACK/FLUO YELLOW/BRIGHT RED	(B) BRIGHT RED/BLUE GLOSSY	(C) FLUO ORANGE/CYAN/FLUO YELLOW GLOSSY
S	0110-8399	0110-8403	0110-8407
M	0110-8400	0110-8404	0110-8408

SIZE	(A) BLACK/FLUO YELLOW/BRIGHT RED	(B) BRIGHT RED/BLUE GLOSSY	(C) FLUO ORANGE/CYAN/FLUO YELLOW GLOSSY
L	0110-8401	0110-8405	0110-8409
XL	0110-8402	0110-8406	0110-8410



D



E



CORP

SIZE	(D) BRIGHT RED GLOSSY	(E) BLUE GLOSSY
XS	0110-8411	0110-8417
S	0110-8412	0110-8418
M	0110-8413	0110-8419

SIZE	(D) BRIGHT RED GLOSSY	(E) BLUE GLOSSY
L	0110-8414	0110-8420
XL	0110-8415	0110-8421
2X	0110-8416	0110-8422

SM-5 HELMETS continued on next page



ECE 22.06



SM-5 HELMETS (CONT)



ROVER 2

SIZE	DARK GRAY/FLUO YELLOW GLOSSY
XS	0110-8393
S	0110-8394

SIZE	DARK GRAY/FLUO YELLOW GLOSSY
M	0110-8395
L	0110-8396

SIZE	DARK GRAY/FLUO YELLOW GLOSSY
XL	0110-8397
2X	0110-8398



A



B



SAIL

SIZE	(A) WHITE/DIVA PINK/ ENAMEL BLUE GLOSSY	(B) FLUO YELLOW/ENAMEL BLUE/SILVER GLOSSY
XS	0110-8429	0110-8435
S	0110-8430	0110-8436
M	0110-8431	0110-8437

SIZE	(A) WHITE/DIVA PINK/ ENAMEL BLUE GLOSSY	(B) FLUO YELLOW/ENAMEL BLUE/SILVER GLOSSY
L	0110-8432	0110-8438
XL	0110-8433	0110-8439
2X	0110-8434	0110-8440

SM-5 HELMETS continued on next page



ECE 22.06



SM-5 HELMETS (CONT)



MINERAL

SIZE	COOL GRAY/DARK GRAY GLOSSY
XS	0110-8423
S	0110-8424

SIZE	COOL GRAY/DARK GRAY GLOSSY
M	0110-8425
L	0110-8426

SIZE	COOL GRAY/DARK GRAY GLOSSY
XL	0110-8427
2X	0110-8428



RASH

SIZE	(A) NIGHT NAVY/ FLUO YELLOW GLOSSY	(B) DARK GRAY/ BRIGHT RED GLOSSY
XS	0110-8441	0110-8447
S	0110-8442	0110-8448
M	0110-8443	0110-8449

SIZE	(A) NIGHT NAVY/ FLUO YELLOW GLOSSY	(B) DARK GRAY/ BRIGHT RED GLOSSY
L	0110-8444	0110-8450
XL	0110-8445	0110-8451
2X	0110-8446	0110-8452



PRIME JERSEYS

- Hybrid fit with set-in style tailored sleeves
- Tapered collar and cuffs
- Minimal seams for maximum comfort
- Fully ventilated arms and back panel
- Moisture-wicking material keeps you dry
- Tail silicone print helps keep jersey tucked in
- Flat-stitched seams minimize irritation
- See size chart on page 17 before ordering

ANALOG JERSEYS

SIZE	(A) LEMON/RED	SIZE	(A) LEMON/RED
S	2910-7677	XL	2910-7680
M	2910-7678	2X	2910-7681
L	2910-7679	3X	2910-7682

PRIME PANTS

- Ultra-lightweight pre-curved chassis design
- Inner compression short
- Abrasion-tolerant, poly/spandex blend
- Premium-grade, full-grain leather inner knee panels
- Aramid fiber-backed inner knee panels
- Engineered small expansion stretch panels on waist
- Strategically placed vented mesh panels
- Laser-cut holes for ventilation
- Inner waist silicone band
- Interior hip pocket (easily removable)
- Ratchet-style waist closure
- See size chart on page 17 before ordering

ANALOG PANTS

DESCRIPTION	(B) LEMON/RED	DESCRIPTION	(B) LEMON/RED
Europe 44 (USA 28)	2901-11079	Europe 49 (USA 33)	2901-11084
Europe 45 (USA 29)	2901-11080	Europe 50 (USA 34)	2901-11085
Europe 46 (USA 30)	2901-11081	Europe 52 (USA 36)	2901-11086
Europe 47 (USA 31)	2901-11082	Europe 54 (USA 38)	2901-11087
Europe 48 (USA 32)	2901-11083	Europe 56 (USA 40)	2901-11088

PRIME JERSEYS & PANTS continued on next page

THOR PRIME JERSEYS & PANTS (CONT)



ANALOG JERSEYS

SIZE	(A) BLACK/WHITE	(B) CHARCOAL/ORANGE	(C) RED/WHITE
S	2910-7683	2910-7689	2910-7695
M	2910-7684	2910-7690	2910-7696
L	2910-7685	2910-7691	2910-7697
XL	2910-7686	2910-7692	2910-7698
2X	2910-7687	2910-7693	2910-7699
3X	2910-7688	2910-7694	2910-7700

ANALOG PANTS

DESCRIPTION	(D) BLACK/WHITE	(E) CHARCOAL/ORANGE	(F) RED/WHITE
Europe 44 (USA 28)	2901-11089	2901-11099	2901-11109
Europe 45 (USA 29)	2901-11090	2901-11100	2901-11110
Europe 46 (USA 30)	2901-11091	2901-11101	2901-11111
Europe 47 (USA 31)	2901-11092	2901-11102	2901-11112
Europe 48 (USA 32)	2901-11093	2901-11103	2901-11113
Europe 49 (USA 33)	2901-11094	2901-11104	2901-11114
Europe 50 (USA 34)	2901-11095	2901-11105	2901-11115
Europe 52 (USA 36)	2901-11096	2901-11106	2901-11116
Europe 54 (USA 38)	2901-11097	2901-11107	2901-11117
Europe 56 (USA 40)	2901-11098	2901-11108	2901-11118

MEN'S RIDING GEAR SIZE CHARTS

NOTE: Prime jerseys have a tighter fit.

MEN'S JERSEYS

SIZE	CHEST GIRTH
S	86 cm-94 cm (33,9"-37,0")
M	94 cm-102 cm (37,0"-40,2")
L	102 cm-110 cm (40,2"-43,3")
XL	110 cm-118 cm (43,3"-46,5")
2X	118 cm-128 cm (46,5"-50,4")
3X	128 cm-141 cm (50,4"-55,5")

MEN'S OFFROAD PANTS

SIZE	WAIST	INSEAM
Europe 44 (USA 28)	68,5 cm-71 cm (27"-28")	75 cm (29,5")
Europe 46 (USA 30)	73,5 cm-76 cm (29"-30")	76 cm (30")
Europe 48 (USA 32)	79 cm-81 cm (31"-32")	77,5 cm (30,5")
Europe 50 (USA 34)	84 cm-86 cm (33"-34")	79 cm (31")
Europe 52 (USA 36)	89 cm-91 cm (35"-36")	81 cm (32")
Europe 54 (USA 38)	94 cm-97 cm (37"-38")	81 cm (32")
Europe 56 (USA 40)	99 cm-102 cm (39"-40")	81 cm (32")



QUALIFIER JERSEYS

- Non-fading sublimated graphics
- Durable polyester fabric
- Performance-fitted cuffs
- Relaxed fit
- Pro-rider tested
- See size chart on page 19 before ordering

SIZE	(A) PINK/TEAL	(B) ORANGE/BLUE	(C) BLUE/BLACK
S	2910-7518	2910-7526	2910-7534
M	2910-7519	2910-7527	2910-7535
L	2910-7520	2910-7528	2910-7536
XL	2910-7521	2910-7529	2910-7537
2X	2910-7522	2910-7530	2910-7538
3X	2910-7523	2910-7531	2910-7539
4X	2910-7524	2910-7532	2910-7540
5X	2910-7525	2910-7533	2910-7541

QUALIFIER PANTS

- High-denier abrasion resistant polyester
- Pre-curved leg for ergonomic riding position
- Three-point waist adjustment system
- Non-fading sublimated graphics
- YKK® auto locking zipper
- Athletic-fit stretch panels
- Pro-rider tested
- See size chart on page 19 before ordering

SIZE	(D) PINK/TEAL	(E) ORANGE/BLUE	(F) BLUE/BLACK
28	2901-10805	2901-10819	2901-10833
30	2901-10806	2901-10820	2901-10834
32	2901-10807	2901-10821	2901-10835
34	2901-10808	2901-10822	2901-10836
36	2901-10809	2901-10823	2901-10837
38	2901-10810	2901-10824	2901-10838
40	2901-10811	2901-10825	2901-10839
42	2901-10812	2901-10826	2901-10840
44	2901-10813	2901-10827	2901-10841
46	2901-10814	2901-10828	2901-10842
48	2901-10815	2901-10829	2901-10843
50	2901-10816	2901-10830	2901-10844
52	2901-10817	2901-10831	2901-10845
54	2901-10818	2901-10832	2901-10846

QUALIFIER JERSEYS & PANTS continued on next page

MOOSE
RACING**QUALIFIER JERSEYS & PANTS (CONT)****QUALIFIER JERSEYS**

SIZE	(A) GREEN/TAN	(B) RED/BLACK	(C) STEALTH
S	2910-7542	2910-7550	2910-7558
M	2910-7543	2910-7551	2910-7559
L	2910-7544	2910-7552	2910-7560
XL	2910-7545	2910-7553	2910-7561
2X	-	2910-7554	-
3X	-	2910-7555	-
4X	-	2910-7556	-
5X	-	2910-7557	-

SIZE GUIDE

SIZE	CHEST	SLEEVE LENGTH	SIZE	CHEST	SLEEVE LENGTH
S	41"-43"	33"-34"	2X	49"-51"	37"-38"
M	43"-45"	34"-35"	3X	51"-53"	38"-39"
L	45"-47"	35"-36"	4X	53"-55"	39"-40"
XL	47"-49"	36"-37"	5X	55"-57"	40"-41"

QUALIFIER PANTS

SIZE	(D) GREEN/TAN	(E) RED/BLACK	(F) STEALTH
28	2901-10847	2901-10861	2901-10875
30	2901-10848	2901-10862	2901-10876
32	2901-10849	2901-10863	2901-10877
34	2901-10850	2901-10864	2901-10878
36	2901-10851	2901-10865	2901-10879
38	2901-10852	2901-10866	2901-10880
40	2901-10853	2901-10867	2901-10881
42	2901-10854	2901-10868	2901-10882
44	2901-10855	2901-10869	2901-10883
46	2901-10856	2901-10870	2901-10884
48	2901-10857	2901-10871	2901-10885
50	2901-10858	2901-10872	2901-10886
52	2901-10859	2901-10873	2901-10887
54	2901-10860	2901-10874	2901-10888

SIZE GUIDE

SIZE	WAIST	CINCHED/ EXPANDED	INSEAM	SIZE	WAIST	CINCHED/ EXPANDED	INSEAM
28	27"-30"	29"	42	41"-44"	33"		
30	29"-32"	29"	44	43"-44"	33"		
32	31"-34"	30"	46	45"-48"	33"		
34	33"-36"	31"	48	47"-50"	33"		
36	35"-38"	32"	50	48"-52"	33"		
38	37"-40"	32"	52	50"-54"	33"		
40	39"-42"	33"	54	52"-56"	33"		



Back view



BIONIC TECH V3 PROTECTION JACKET

- Lightest Level 2 chest protector in its class
- 17% of the protector structure consists of ventilation apertures aligned through both hybrid layers to ensure maximum ventilation
- Super ventilated with channeling of direct heat buildup away from the chest
- Anatomically profiled back protector is highly ventilated and flexible
- BNS compatible via removable puck panel and elasticated BS pull tabs
- Chest and back protectors can be detached from the base layer for easy washing of the jacket
- Chest can be opened on the left shoulder by a convenient quick-release magnetic buckle providing easy access to the central zipper
- V-straps on the lower forearm for ensure a customizable fit while keeping the elbow protector securely positioned
- V-straps on the back protector make for a more adaptive fit

- Strategically placed EVA foam padding on the upper arms and chest provide improved roost defense
- Race-proven breathable and stretchable textiles used for the base layer construction
- Floating chest and back protectors, and rib guards
- Waist strap not attached to back protector
- Shoulder and elbow protectors tested and certified to EN1621-1:2012 - Level 2
- Back protector tested and certified to EN1621-2:2014 - Level 2
- Chest protector tested and certified to EN1621-3:2018 - Level 2

SIZE	BLACK/WHITE/RED
S	2702-0301
M	2702-0302

SIZE	BLACK/WHITE/RED
L	2702-0303
XL	2702-0304

SIZE	BLACK/WHITE/RED
2X	2702-0305

Back view



BIONIC TECH YOUTH PROTECTION JACKET

- Lightest Level 2 chest protector in its class
- 17% of the protector structure consists of ventilation apertures and are aligned through both hybrid layers to ensure maximum ventilation
- Super ventilated with channeling of direct heat buildup away from the chest
- Viscoelastic back protector is highly adaptive, ventilated, and flexible
- YNS compatible via removable puck panel and elasticated YNS pull tabs
- Chest and back protectors can be detached from the base layer for easy washing of the jacket
- V-straps on the back protector make for a more adaptive fit
- Race-proven breathable and stretchable textiles used for the base layer construction
- Floating chest and back protectors, and rib guards
- Nucleon Flex Plus Level 1 certified shoulders and elbow protectors

- Shoulder: tested and certified to EN 1621-1:2012 - Level 1
- Elbow: tested and certified to EN 1621-1:2012 -Level 1
- Back: tested and certified to EN 1621-2:2014 - Level 2
- Chest: tested and certified to EN 1621-3:2018 - Level 2

SIZE	BLACK/WHITE/RED
S/M	2701-1258

SIZE	BLACK/WHITE/RED
L/XL	2701-1259



Back view



BIONIC ACTION YOUTH CHEST PROTECTOR

- All-new Cell Technology chest protector features a highly perforated shell for high levels of ventilation and protection
- The flexible side wings of the chest protector adapt to the rider's body shape
- Features a new Cell Technology back protector with a flexion channel for enhanced mobility
- Extended padding offers more protection against tire roost without obstructing arm movement
- The protectors are perforated for maximum breathability and cooling ventilation
- Elastic closure system features newly designed, quick and easy-to-use buckles that fit a broad range of rider body sizes
- Padded chassis for optimized levels of comfort and a close-to-body fit
- Adjustable shoulder straps for an optimal fit
- YNS compatibility with removable back puck and YNS pull tabs

- Shoulder protectors - EN 1621-1:2012
- Back protector - EN 1621-2:2014
- Front chest protector - EN 1621-3:2018

SIZE	BLACK/RED	SIZE	BLACK/RED
S/M	2701-1262	L/XL	2701-1263



Back view



A-5 S YOUTH BODY ARMOR

- Light, easy-to-use kids/youth body armor that can incorporate the YNS
- Shells are highly perforated for maximum breathability and air ventilation
- Injected shells constructed with a back-integrated grid structure to absorb and dissipate impact forces
- Hard shells are constructed from a high-performance polymeric material blend for optimized flexibility and excellent weight savings
- Wide, flexible lateral protective structure for secure fitment with hook-and-loop attachment straps
- Soft Bio-Foam and thermoformed padding for maximum comfort and close-to-the-body fit
- Back features a removable puck to house the Alpinestars YNS
- Adjustable shoulder straps

- The following standards apply to this product:
- Shoulder protectors - EN 1621-1:2012 (Level 1)
- Back protector - EN 1621-2:2014 (Level 1)
- Front chest protector - EN 1621-3:2016 (Level 2)

SIZE	BLACK/WHITE/RED	SIZE	BLACK/WHITE/RED
S/M	2701-1260	L/XL	2701-1261



Back view



MEN'S UPSTATE CANVAS NATIONAL™ JACKET

- Clean and minimal styling
- Icon relaxed fit provides all-day riding comfort
- Durable 400D polyester and cotton stretch canvas chassis are ideal for the urban rider
- Abrasion-resistant overlays are paired with removable D30® elbow, shoulder and back impact protectors
- YKK® zippers, zipper vents at cuff and chest and 400D polyester reinforcements in elbows/shoulders
- Jacket tested and certified according to EN 17092-4:2020 - Class A
- D30® removable viper back protector; elbow and shoulder LP1 impact protectors - Tested and certified to EN 1621-2:2014 / EN 1621-1:2012

SIZE	BLACK	SIZE	BLACK
S	2820-6560	XL	2820-6563
M	2820-6561	2X	2820-6564
L	2820-6562	3X	2820-6565

SIZE	S	M	L	XL	2X	3X
Chest	89 cm - 94 cm (35"-37")	94 cm - 104 cm (37"-41")	104 cm - 112 cm (41"-44")	112 cm - 122 cm (44"-48")	122 cm - 135 cm (48"-53")	135 cm - 147 cm (53"-58")
Sleeve length	81 cm (32")	84 cm (33")	86 cm (34")	89 cm (35")	91 cm (36")	94 cm (37")



A



B



C



D



AGILE GLOVES

- Set the standard for minimalist gloves
- Featherweight chassis design and single layer perforated palm provide premium cooling and precise feedback from the motorcycle
- Silicone-treated fingertips for improved lever control
- Hook-and-loop wrist closure
- Perforated Clarino® palm
- Minimalist chassis design
- Wrapped inner-thumb for durability
- Athlete-inspired fit and function

SIZE	(A) ANALOG, BLACK/WHITE	(B) ANALOG, LEMON/RED	(C) ANALOG, RED/WHITE	(D) ANALOG, CHARCOAL/ORANGE
XS	3330-7645	3330-7651	3330-7657	3330-7663
S	3330-7646	3330-7652	3330-7658	3330-7664
M	3330-7647	3330-7653	3330-7659	3330-7665
L	3330-7648	3330-7654	3330-7660	3330-7666
XL	3330-7649	3330-7655	3330-7661	3330-7667
2X	3330-7650	3330-7656	3330-7662	3330-7668



COMPACT AND FLUO SHOE RAIN COVERS

- 100% waterproof all seasons boot covers
- Outer fabric: ultralight nylon
- Taped seams
- Gear lever protection
- Elastic fastener on foot
- Soft non-slip sole

SIZE	FLUO YELLOW
S (38/39)	2856-0020
M (40/41)	2856-0021
L (42/43)	2856-0022
XL (44/45)	2856-0023
2X (46/47)	2856-0024