

PARTS EUROPE Product News

STREET • OFFROAD • ATV/UTV • SNOWMOBILE • WATERCRAFT • TIRE & SERVICE • SCOOTER • BICYCLE



PLATINUM PIPES

- A unique fusion of power, elegance and utility that pushes the boundaries of the sport's riding pleasure
- Offers the same performance gains as the popular Works Pipe, but utilizes a platinum plating on the body to protect it from everyday elements
- Stamped AKDQ high quality carbon steel construction
- Hand-welded and pounded seams
- Reinforced mounting brackets and stinger
- Electroless nickel plating increases part life two to ten times longer



1822-0544

FITS MODEL	PART #	FITS MODEL	PART #	FITS MODEL	PART #
HUSQVARNA		KTM		KTM (CONT)	
TC 125 23	1822-0544	125 SX 23	1822-0544	250/300 SX 23	1822-0545

WORKS PIPES

- Offers unparalleled performance and power for every two-stroke application
- Increased horsepower and torque gains
- Stamped AKDQ high quality carbon steel construction
- Hand-welded and pounded seams
- Reinforced mounting brackets and stinger



1822-0541

FITS MODEL	PART #	FITS MODEL	PART #	FITS MODEL	PART #
HUSQVARNA		KTM		KTM (CONT)	
TC 125 23	1822-0541	125 SX 23	1822-0541	250/300 SX 23	1822-0542



1821-2075



1821-2076

304 SILENCERS

- Longer body design helps to reduce noise output
- 6061 T6 brushed aluminum silencer body
- Stainless steel end-cap
- Double-walled mounting brackets
- Allen head screws ensure easy repacking when needed for extended product life
- TIG and MIG welded for strength and durability
- Made in the U.S.A.

FITS MODEL	PART #	FITS MODEL	PART #	FITS MODEL	PART #
HUSQVARNA		HUSQVARNA (CONT)		KTM (CONT)	
TC 125 23	1821-2075	TE 300i 23	1821-2076	250 XC-W TPI 23	1821-2076
TC 250 23	1821-2076	KTM		300 XC 23	1821-2076
TE250i 23	1821-2076	125 SX 23	1821-2075	300 XC TPI 23	1821-2076
TX 300 23	1821-2076	250 SX 23	1821-2076	300 XC-W TPI Six Days 23	1821-2076
TX 300i 23	1821-2076	250 XC 23	1821-2076	300 EXC TPI Erzbergrodeo 23	1821-2076



R-304 SILENCER

- The R-304 silencer was developed as a full-race two-stroke silencer
- The compact design of the short aluminum canister offers optimum performance gains and is recommended for closed-course racing only
- Hex head screws are used to secure the inlet cap and can be removed easily for quick repacking of the silencer
- 304 stainless steel intake tube
- Double-walled mounting bracket(s)

FITS MODEL	PART #
HUSQVARNA	
TC 125 23	1821-2077



- 6061-T6 brushed aluminum silencer body
- Stainless steel end cap
- Allen head screws ensure easy repacking when needed for extended product life

FITS MODEL	PART #
KTM	
125 SX 23	1821-2077

R304 SHORTY AND R304 SHORTY Ti-2 CARBON-KEVLAR SILENCERS

- Canister is made of lightweight 6061 T-6 aluminum with brushed finish
- CNC machined aluminum mounting bracket
- Double-walled mounting brackets
- Exclusive E-glass pillow packing
- High-strength aluminum rivets and steel Allen head screws on one end for easy disassembly and repacking

FITS MODEL	DESCRIPTION	PART #
HUSQVARNA		
TC 125 23	R304 Shorty Ti-2 Carbon-Kevlar Silencer	1821-2078
TC 250 23	R304 Shorty	1821-2079
	R304 Shorty Ti-2 Carbon-Kevlar Silencer	1821-2080
TE 250i 23	R304 Shorty	1821-2079
	R304 Shorty Ti-2 Carbon-Kevlar Silencer	1821-2080
TX 300 23	R304 Shorty	1821-2079
	R304 Shorty Ti-2 Carbon-Kevlar Silencer	1821-2080
TX 300i 23	R304 Shorty	1821-2079
	R304 Shorty Ti-2 Carbon-Kevlar Silencer	1821-2080
TE 300i 23	R304 Shorty	1821-2079
	R304 Shorty Ti-2 Carbon-Kevlar Silencer	1821-2080
KTM		
125 SX 23	R304 Shorty Ti-2 Carbon-Kevlar Silencer	1821-2078
250 SX 23	R304 Shorty	1821-2079
	R304 Shorty Ti-2 Carbon-Kevlar Silencer	1821-2080
250 XC 23	R304 Shorty	1821-2079



- PC logo detailing
- The Ti-2 is for closed-course racing only
- Ti-2 Carbon silencers feature a Carbon Aramid shell, titanium tubing and titanium end caps optimum performance gains while reducing weight

FITS MODEL	DESCRIPTION	PART #
KTM (CONT)		
250 XC 23(CONT)	R304 Shorty Ti-2 Carbon-Kevlar Silencer	1821-2080
250 XC-W TPI 23	R304 Shorty	1821-2079
	R304 Shorty Ti-2 Carbon-Kevlar Silencer	1821-2080
300 XC 23	R304 Shorty	1821-2079
	R304 Shorty Ti-2 Carbon-Kevlar Silencer	1821-2080
300 XC TPI 23	R304 Shorty	1821-2079
	R304 Shorty Ti-2 Carbon-Kevlar Silencer	1821-2080
300 XC-W TPI Six Days 23	R304 Shorty	1821-2079
	R304 Shorty Ti-2 Carbon-Kevlar Silencer	1821-2080
300 EXC TPI Erzbergrodeo 23	R304 Shorty	1821-2079
	R304 Shorty Ti-2 Carbon-Kevlar Silencer	1821-2080
YAMAHA		
YZ125 22-23	R304 Shorty	1821-2071
	R304 Shorty Ti-2 Carbon-Kevlar Silencer	1821-2072

TYPE 296 SPARK ARRESTOR SILENCERS

- A quiet spark arrestor to use when riding in noise-sensitive areas
- Internal metal baffle, chambers and sound-absorbing materials for a muffled sound
- Constructed of aluminum and stainless steel
- Double-walled mounting bracket(s)
- Longer canister design keeps noise levels to a minimum
- No loss of motor performance

FITS MODEL	PART #	FITS MODEL	PART #
HUSQVARNA		HUSQVARNA (CONT)	
TC 125 23	1821-2081	TE 300i 23	1821-2082
TC 250 23	1821-2082	KTM	
TE 250i 23	1821-2082	125 SX 23	1821-2081
TX 300 23	1821-2082	250 SX 23	1821-2082
TX 300i 23	1821-2082	250 XC 23	1821-2082



1821-2073



1821-2082

FITS MODEL	PART #	FITS MODEL	PART #
KTM (CONT)		KTM (CONT)	
250 XC-W TPI 23	1821-2082	300 EXC TPI Erzbergrodeo 23	1821-2082
300 XC 23	1821-2082	YAMAHA	
300 XC TPI 23	1821-2082	YZ125 22-23	1821-2073
300 XC-W TPI Six Days 23	1821-2082		



Ti-6 AND T-6 4-STROKE EXHAUST SYSTEMS

- If you are competing in an AMA Supercross or AMA Motocross series, the Ti-6 Pro titanium exhaust system is perfect for you; created as a full race system, the Ti-6 Pro is designed to increase performance and help professional racers pass AMA/FIM sound regulations
- Ti-6 titanium exhaust system is designed to improve performance and power; constructed of titanium throughout the headpipe, mid pipe and canister; this is the ideal exhaust for any offroad or closed course racer looking for improved performance, durability and a professional look; comes with a removable spark arrestor making it easy to alternate between off-road and closed course riding
- T-6 stainless steel exhaust system offers the same benefits as Ti-6 titanium exhaust system, but the T-6 is constructed of stainless steel and aluminum for increased strength and durability while giving riders a more affordable alternative to titanium; comes with a removable spark arrestor making it easy to alternate between off-road and closed course riding
- All T-6 Euro exhaust systems pass AMA/FIM sound regulations



1820-2030

- Machined aluminum muffler brackets for increased strength and durability
- Asymmetrical muffler configuration for increased packing volume
- Most systems equipped with a RC-4 Resonance Chamber for reduced sound output
- Machined mid pipe to headpipe joint for a better, leak-free fit
- TIG precision welding

FITS MODEL	DESCRIPTION	PART #
YAMAHA		
YZF450 23	T-6 stainless steel/titanium system w/ carbon end cap	1820-2030
	Ti-6 titanium system w/ carbon end cap	1820-2031

FITS MODEL	DESCRIPTION	PART #
YAMAHA (CONT)		
YZF450 23 (CONT)	Ti-6 Pro titanium system w/ carbon end cap	1820-2032
	T-6 stainless steel/aluminum system	1820-2029



T-6 SLIP-ON MUFFLER FOR YAMAHA YZ450F 23

- T-6 Stainless Slip-On Silencers are designed for a rider looking for an inexpensive, easy-to-install, durable performance silencer that can bolt onto their stock headpipe
- Constructed of stainless steel throughout the mid-pipe and end cap while the canister is constructed of aluminum for increased durability
- Machined aluminum muffler bracket for increased strength and durability
- Asymmetrical muffler configuration for increased packing volume
- Removable spark arrestor
- TIG precision welding
- See page 7 of the 2023 Parts Europe Offroad catalog for the full line of T-6 Slip-On Silencers



DECALS

- Stick these die-cut Pro Circuit decals on your bike, your toolbox or anywhere else

DESCRIPTION	PART #
T-6 muffler	1821-2074

DESCRIPTION	PART #
Deluxe decal sheet	4320-2551

POWFLO™ AIR INTAKES

- Unique internal venturi design promotes maximum airflow
- High-flow K&N® air filter element ensures the best air intake and maximum protection for your engine
- The PowrFlo™ Intake system consists of an aluminum cover and all the fasteners, seals, backing plate and mounting hardware to make for an easy installation
- Formed stainless steel mesh insert in the dual entry ports keeps out bugs and debris



CHROME PART #

1010-3106



BLACK PART #

1010-3110

FITS MODEL
KAWASAKI
VN900C Vulcan 900 Custom/VN900B Vulcan 900 Classic



1011-4733



1011-4737



1011-4732

STANDARD AIR FILTERS

- Twin Air dual-stage filters are the choice of top factory teams and riders worldwide
- Dual-bonded foam design filters out even the smallest dirt particles, while allowing more airflow than two separate layer filters (flow bench proven)
- Flat foam sealing ring provides a secure seat against the airbox, even in the worst riding conditions
- Twin Air filters are slightly smaller than stock, making them easier to change while increasing dead air space around the filter for better performance

AIRBOX COVERS

- Remove the air filter and pressure wash the inside of the airbox by covering the carb inlet with a watertight cap
- Made of PVC with a rubber sealing ring
- Top screw included

OFFROAD MOTORCYCLES

FITS MODEL	STANDARD AIR FILTER	PRE-OILED AIR FILTER	AIRBOX COVERS	GRAND PRIX DUST COVERS
GAS GAS				
TXT 125/250/280/300 23	1011-4733	-	-	-
HONDA				
CRF250R/RX 22	-	-	-	1011-4738
CRF450R/RX/RWE 21-23	-	-	-	1011-4738
HUSQVARNA				
FC 250/350/450 23	-	-	-	1011-4737
FC 250/450 Rockstar Edition 22-23	-	-	-	1011-4737
FX 350/450 23	-	-	-	1011-4737
TC 125/250 23	-	-	-	1011-4737
TX 300 23	-	-	-	1011-4737

ATV/UTV

DESCRIPTION	PART #
Universal	1011-4735

RADIATOR SLEEVES

- Fits over the radiator louvers to prevent dirt, sand and mud from clogging the radiator
- Made from nylon-coated glass yarn material
- Easy installation – simply remove the louvers, slide on the sleeve and re-install on the radiator

FITS MODEL	PART #	FITS MODEL	PART #
GAS GAS		HUSQVARNA (CONT)	
MC-E 5 21-22	1904-0305	FX350/450 23	1904-0305
HUSQVARNA		TX300 23	1904-0305
FC250/350/450 23	1904-0305	KTM	
TC125/250 23	1904-0305	SX 125/300 23	1904-0305

FACTORY PRE-OILED STANDARD AIR FILTER

- The same factory treatment that race teams and OEMs receive is now available for all Twin Air users
- Filter is pre-oiled with Twin Air Bio-Foam Filter Oil using our state-of-the-art filter oiling machines to provide the ultimate consistency in pore coverage
- Same industry-leading Twin Air Filter you are used to, now pre-oiled for your convenience
- Comes in a resealable bag

GRAND PRIX COVERS

- Fits over the Twin Air filter when riding in severe conditions such as heavy dust and sand
- Filter sock with nylon

FITS MODEL	STANDARD AIR FILTER	PRE-OILED AIR FILTER	AIRBOX COVERS	GRAND PRIX DUST COVERS
KTM				
SX 125/250 23	-	-	-	1011-4737
SX-F 250/350 23	-	-	-	1011-4737
SX-F 250/250 Factory Edition 22-23	-	-	-	1011-4737
XC-F 250/350/450 23	-	-	-	1011-4737
XC 250/350 23	-	-	-	1011-4737
SHERCO				
Trail 125ST/250ST/300ST 23	1011-4734	-	-	-
YAMAHA				
YZ450F 23	1011-4727	1011-4728	1011-4732	-

- 1 Backfire filter.
- 2 Supermoto filter.
- 3 GP dust cover.
- 4 For PowerFlow kit only.

DESCRIPTION	PART #
Universal (large)	1011-4736



1904-0305

FITS MODEL	PART #	FITS MODEL	PART #
KTM (CONT)		KTM (CONT)	
SX-F 250/350/450 23	1904-0305	SMR 450 23	1904-0305
XC-F 250/350/450 23	1904-0305	YAMAHA	
XC 125/250	1904-0305	YZ125/250 22-23	1904-0304
		YZ450F 23	1904-0303



0653-0119



0653-0118

BRAKE LINE KIT FOR BMW R1250 GS ABS 04-12

- Offers a variety of different ways to upgrade the hydraulic brake lines and clutch lines on a motorcycle
- Pressure tested to 102 bar (1500psi)

- Made in the U.K
- Ready-made kits are available for a wide variety of modern motorcycles and dirt bikes

DESCRIPTION	PART #
Front brake	0653-0119

DESCRIPTION	PART #
Rear brake	0653-0118



0650-2069



0650-2073



0652-2930

FEATHERLIGHT CONTROL CABLES

- Clutch and throttle cables made to Venhill's high-quality Featherlight specifications
- Marine-grade stainless steel inner wire that runs through a PTFE liner
- Reduced friction provides a light action, easing pressure on the hand, especially in stop/start traffic and during long rides
- PTFE lining removes the need for lubrication

- "Bird-cage" process is applied to inner wire, allowing solder to penetrate the weave of the cable and making the bond with the nipple much stronger
- Available in standard Featherlight or braided style
- Throttle cables sold in pairs; clutch cables sold each

FITS MODEL	DESCRIPTION	PART #
HONDA		
125 MSX ABS, Grom ABS, Grom 22-23	Throttle	0650-2069
	Clutch	0652-2929
CB 1000 R/ABS 11	Throttle	0650-2070
1000 CB R/ABS 12-16	Throttle	0650-2071
HUSQVARNA		
SX 125, TC 125/250 21-22	Throttle	0650-2073
KAWASAKI		
ZX-10 R 1000 ABS Ninja/ZX-10 RR 1000 ABS Ninja	Clutch	0652-2930

FITS MODEL	DESCRIPTION	PART #
KTM		
XC 125/SX 150/250 21-22	Throttle	0650-2073
TRIUMPH		
Bonneville 865 SE 09-12	Clutch	0652-2931
YAMAHA		
MT-07 ABS 21-22	Clutch	0652-2933
XTZ 690 20-22	Throttle	0650-2072
	Clutch	0652-2932

EMIGO

10-79110



0712-0097

OIL FILTERS

- The winningest team in U.S. endurance racing history, Team Emgo Suzuki, relies on Emgo filters
- Only the highest-quality paper, metal and rubber are used to manufacture these top-grade filters
- Clean oil makes engines last longer

STREET APPLICATIONS

FITS MODEL	PART #
APRILIA	
660 Pegaso Street 05-14	10-79100
HONDA	
CB400F 89-92 (all)	10-82230
NV 400 88-06	10-82200
VF500F Interceptor 84-86	10-82200 ²
VF700 C Magna 84-87	10-82200 ²
VF700 F Interceptor 84-85	10-82200 ²
VT700 C Shadow 84-87	10-82200 ²
CBX 750 84-86	10-82200
VF750C Magna 82-89	10-82200 ²
VF750 83-85	10-82200 ²
VFR750F Interceptor 86-87	10-82200 ²
VT750C Shadow 84-87	10-82200 ²
VT800C 87-93	10-82200 ²
VF1000F 84-86	10-82200 ²
VTR1000F 03-05	10-82230
VF1100 V65 Magna/Sabre 82-86	10-82200 ²
VF1100 83-84	10-82200 ²
VT1100 Shadow 89-98	10-82200 ²
VT1100 Shadow Touring 97-01	10-82200 ²
VT1100C Shadow 85-88	10-82200 ²
JAWA	
650 Dakar 09-12	10-79100
660 Sportard 13-15	10-79100
KAWASAKI	
EN 400 90-92	10-82200
EX 400 94-95	10-82200
KLE 400 91-96	10-82200 ²
ZXR 400/R 89-02	10-82200
EN450 85-90	10-82200 ²
EX500 87-89	10-82200 ²
ER-6N/ER650/Z650 07-18	10-82200 ¹
VN700 Vulcan 84-85	10-82200 ²
VN750 Vulcan 86-93	10-82200 ²

FITS MODEL	PART #
KAWASAKI (CONT)	
VN750 Vulcan 94-01	10-82200 ²
Z 1000 B/C/D (ZR1000) 07-16	10-82200 ¹
ZX10R 06-18	10-82200 ¹
MZ / MUZ	
660 Baghira / Mastiff 98-00	10-79100
660 Skorpion 94-00	10-79100
YAMAHA	
DT125 R 91-04	10-79110
SR125 81-02	10-79110
TW125 99-04	10-79110
XT125 82-96	10-79110
XV125/XVS125 97-04	10-79110
SR185 81-83	10-79110
TW200 87-18	10-79110
XT200 82-83	10-79110
TW225E 04-07	10-79110
FZ250 85, FZR250 86-90	10-79100
SR250 79-84, SRX250T/TC 87	10-79110
XC250 87	10-79100
XT250 84	10-79110
XV250/XVS250 88-18	10-79100
XT 350 85-01	10-79110
XS360 76-77	10-28401
FZR400 R 87	10-28401
FZR400 Genesis 88-91	10-28401
SR 400 14-17	10-79100
XS400 77-83	10-28401
XT 400 81-82, XT400E 91	10-79100
XV400, XVS400 87-08, XZ400 81-82	10-79100
SR 500 78-00	10-79100
XT 500 76-83	10-79100
XV 500 Virago 83-84	10-79100
XV 535 Virago 87-02	10-79100
XJ550 81-85	10-28401

FITS MODEL	PART #
YAMAHA (CONT)	
XZ 550 Vision 82-83	10-79100
FJ600 84-86	10-28401
FZ600 86-89	10-28401
FZR600 89-90	10-28401
SRX 600 85-90	10-79100
XJ600 91-92	10-79110
XT 600Z Tenere 83-91	10-79100
YX600 Radian 86-91	10-28401
XJ650 80-85 (all)	10-28401
XS650 80	10-28401
XVS650 97-17 (all)	10-79100
MT-03 06-12	10-79100
XT 660 04-16 (all)	10-79100
XTZ 660 91-16 (all)	10-79100
XJ700 85-86	10-28401
XJ750 81-84	10-28401
XS 750/S 77-79	10-28500
XV 750 Virago 81-99 (all)	10-79100
TDM 850 90-01	10-79100
TRX 850 96-00	10-79100
XS850 80-81	10-28500
TDM 900 02-13	10-79100
XV 920 M/R Virago 81-83	10-79100
XV 1000 Virago 81-85 (all)	10-79100
BT1000 Bulldog 02-06	10-79100
XJ1100 Maxim 82	10-28500
XS1100 78-84	10-28500
XV1100 Virago 86-99 (all)	10-79100
XVS1100 V-Star 99-09	10-79100
VMX1200 Vmax 85-95	10-28500
XVZ1200 83-86	10-28500
FJR1300 01-12	0712-0096
XVZ1300 Venture Royale 86-88, 90-93	10-28500

¹ Chrome; also available in black, PART #10-82230.² Chrome; also available in black, PART #10-82210.

OIL FILTERS continued on next page

**OIL FILTERS (CONT)****OFFROAD APPLICATIONS**

FITS MODEL	PART #
BETA	
RR 400 Enduro 05-09	0712-0402
RR 450 Enduro 05-09	0712-0402
RR 525 Enduro 05-09	0712-0402
GAS GAS	
EC 250F 4T 12-15	0712-0097
EC 300F 4T 13-15	0712-0097
EC 450F 4T 13-15	0712-0097
HM MOTO	
CRE125F / CRM-F 4T 08-15	0712-0097
Scrambler 125 4T 11-15	0712-0097
Scrambler 200 11-15	0712-0097
Trail Locusta 125 4T 11-15	0712-0097
Trail Locusta 200 11-15	0712-0097
Urban 125 City 4T 11-15	0712-0097
Urban City 200 11-15	0712-0097
HUSABERG	
FE250 13	0712-0402
FE250 14	0712-0403
FE350 14	0712-0403
FE390 10-12	0712-0402
FE450 09-14	0712-0402
FS 450 04-08	0712-0040
FE 450 04-08	0712-0040
FC 450 04-08	0712-0040
FX450 10-11	0712-0402
FE501 13-14	0712-0402
FS 550 04-08	0712-0040
FE 550 04-08	0712-0040
FC 550 04-08	0712-0040
FE570/SM 09-12	0712-0402
FS 650 04-08	0712-0040
FE 650 04-08	0712-0040
HUSQVARNA	
FC 250 14-20	0712-0403
FC 350 15-20	0712-0403
FC 450 14-20	0712-0403
FE 250 14-20	0712-0403
FE 350 / S 14-20	0712-0403
FE 450 14-20	0712-0403
FE 501 14-18	0712-0402
FS 450 16	0712-0403
SM 610 98-99	0712-0405
SM 610 S IE 06-08	0712-0405
SM250R 07	0712-0405
SM450R 04-07	0712-0405
SM510R 05-07	0712-0405
TC 250 02-07	0712-0405

FITS MODEL	PART #
HUSQVARNA (CONT)	
TC 510 05-07	0712-0405
TC 450 02-06	0712-0405
TE 250 02-07	0712-0405
TE 410 98-01	0712-0405
TE 450 02-06	0712-0405
TE 510 04-06	0712-0405
TE610 E Enduro 98-01	0712-0405
TE610 E LT 00	0712-0405
TXC 250 08-09	0712-0405
TXC 450 08-09	0712-0405
TXC 510 08-09	0712-0405
KTM	
SX 400 99-07 (long)	0712-0040
SX 400 99-07 (short)	0712-0039
SX 450 03-07 (long)	0712-0040
SX 450 03-07 (short)	0712-0039
SX 520 99-02 (long)	0712-0040
SX 520 99-02 (short)	0712-0039
SX 525 03-08 (long)	0712-0040
SX 525 03-08 (short)	0712-0039
SXC 625 02-05 (long)	0712-0040
SXC 625 02-05 (short)	0712-0039
SX-F 250 07-12	0712-0402
SX-F 250 13-20	0712-0403
SX-F 350 11-20	0712-0403
SX-F 450 07-12	0712-0403
SX-F 450 13-15	0712-0402
SX-F 450 16-20	0712-0403
SX-F 505 08-09	0712-0403
SXS 540 S06-07 (long)	0712-0040
SXS 540 S06-07 (short)	0712-0039
EXC 250 01-06 (long)	0712-0040
EXC 250 01-06 (short)	0712-0039
EXC 400 08-11	0712-0403
EXC 400 99-07 (long)	0712-0040
EXC 400 99-07 (short)	0712-0039
EXC 450 03-07 (long)	0712-0040
EXC 450 03-07 (short)	0712-0039
EXC 450 08-11	0712-0403
EXC 450 08-11	0712-0403
EXC 500 12-16	0712-0403
EXC 520 99-02 (long)	0712-0040
EXC 520 99-02 (short)	0712-0039
EXC 525 03-08 (short)	0712-0039
EXC 530 08-11	0712-0403
EXC 625 02-06 (long)	0712-0040

FITS MODEL	PART #
KTM (CONT)	
EXC 625 02-06 (short)	0712-0039
EXCF 250 07-12	0712-0402
EXC-F 250 13-20	0712-0403
EXC-F 350 12-20	0712-0403
MXC 400 99-07 (long)	0712-0040
MXC 400 99-07 (short)	0712-0039
MXC 450 03-07 (long)	0712-0040
MXC 450 03-07 (short)	0712-0039
MXC 520 99-02 (long)	0712-0040
MXC 520 99-02 (short)	0712-0039
MXC 525 03-08 (long)	0712-0040
MXC 525 03-08 (short)	0712-0039
SMC 625 04-05 (long)	0712-0040
SMC 625 04-05 (short)	0712-0039
SMR 450 04-07 (long)	0712-0040
SMR 450 04-07 (short)	0712-0039
SMR 450 08-12	0712-0403
SMR 525 04-06 (long)	0712-0040
SMR 525 04-06 (short)	0712-0039
SMR 560 07 (long)	0712-0040
SMR 560 07 (short)	0712-0039
XC 505 08-09	0712-0403
XCF 250 07-12	0712-0402
XC-F 250 13-20	0712-0403
XCF 450 07-12	0712-0403
XCF 450 08-11	0712-0403
XC-F 450 16-20	0712-0403
XCFW 250 07-12	0712-0402
XCF-W 250 13-20	0712-0403
XCF-W 350 12-20	0712-0403
XC-RW 530 08-11	0712-0403
XC-W 400 07 (long)	0712-0040
XC-W 400 07 (short)	0712-0039
XCW 400 08-11	0712-0403
XCW 450 12-16	0712-0402
XC-W 500 12-16	0712-0403
TM	
250 4T 07 (all)	10-79120
250 4T 08-15 (all)	0712-0097
450 4T 07-10 (all)	10-79120
450 4T 11-15 (all)	0712-0097
530 4T 07-15 (all)	0712-0097
660 4T 08-09 (all)	10-79120
YAMAHA	
YZ250F 01-08	10-79120
YZ250F/FX 09-20	0712-0097
YZ400F/426F 98-02	10-79120

OIL FILTERS continued on next page

**OIL FILTERS (CONT)****OFFROAD APPLICATIONS (CONT)**

FITS MODEL	PART #
YAMAHA (CONT)	
YZ450F 03-08	10-79120
YZ450F/FX 09-20	0712-0097
WR125X/R 09-16	0712-0097
WR250F 01-08	10-79120
WR250F 09-20	0712-0097
WR250R/X 09-20	0712-0097
WR400F/426F 98-02	10-79120
WR450F 03-08	10-79120
WR450F 09-20	0712-0097
BW200 85-88	10-79110
BW350 87-88	10-79100
TT225 01-04	10-79110
TT225 86-87	10-79110

FITS MODEL	PART #
YAMAHA (CONT)	
TT250 80-82	10-79100
TT250R 93-97	10-79120
TT350 86-87	10-79110
TT500 76-81	10-79100
TT500 77-80	10-79100
TT600 83-04 (all)	10-79100
TT-R225 00-04	10-79110
TTR230 05-16	10-79100
TTR250 00-06	10-79120
TW200 87-18	10-79110
XG250 04-15	0712-0097
XT125 82-83	10-79110
XT225 92-02	10-79110

FITS MODEL	PART #
YAMAHA (CONT)	
XT250 05-16	0712-0097
XT250 80-83	10-79100
XT250 84	10-79110
XT350 85-01	10-79110
XT400 81-84, 91	10-79100
XT500 71-86	10-79100
XT500 76-81	10-79100
XT550 82-88	10-79100
XT600 91-98 (all)	10-79100
XT660R 04-16 (all)	10-79100

ATV/UTV APPLICATIONS

FITS MODEL	PART #
KAWASAKI	
KLF400 2x4/4x4 93-00	10-82230
KVF400 4x4 97-02	10-82230
KAF450B Mule 1000 93-97	10-82230
POLARIS	
300 Sportsman 08-10	10-82230
300 Hawkeye 2x4/4x4 07-11	10-82230
325 Magnum/Trail Boss/ Expedition 00-02	10-82230
300 Trail Blazer 08-11	10-82230
330 Magnum 2x4/4x4 03-06	10-82230
330 ATP 04-05	10-82230
330 Trail Boss 03-11	10-82230
335 Sportsman 99-01	10-82230
400 Ranger/4x4 H.O. 10-13	10-82230
400 Sportsman 4x4 01-05	10-82230

FITS MODEL	PART #
POLARIS (CONT)	
400 Sportsman H.O. 08-13	10-82230
400 Xplorer 96-01	10-82230
425 Xpedition 00-02	10-82230
425 Magnum 6x6 96-97, 2x4/4x4 95-58	10-82230
425 Ranger 01-03	10-82230
450 Sportsman 06-07	10-82230
500 ATP HO 04-05	10-82230
500 Magnum 00-02	10-82230
500 Ranger 2x4/4x4/ 6x6/Crew 06-13	10-82230
500 Scrambler 96-11	10-82230
YAMAHA	
YFM200/DX 86-90	10-79110
YTM200 83-86	10-79110

FITS MODEL	PART #
YAMAHA (CONT)	
YFM225 86-90	10-79110
YTM225 83-86	10-79110
YFU1 Prohailer 89-91	10-79120
YFB250/FW 92-01	10-79110
YFM250T 91-02	10-79110
YFM250R Raptor 08-13	0712-0097
YFP350 88-92	10-79120
YFM350ER/FW/FWB/V/X 87-04	10-79120
YFM350FW 00-04	10-79120
YFM350X 88-04	10-79120
YFM400 Big Bear 00-08	10-79120
YFM400 Kodiak 99	10-79120
YFZ450 07-19	0712-0097
YXR450 Rhino 06-09	10-82230

SCOOTER APPLICATIONS

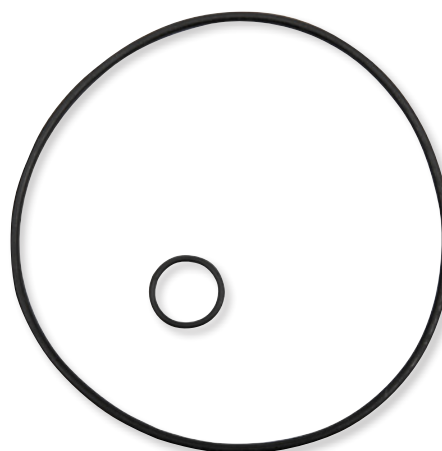
FITS MODEL	PART #
YAMAHA	
XC180 Riva 85	10-79100

FITS MODEL	PART #
YAMAHA (CONT)	
XC200 Riva 83-85	10-79100

**OIL FILTER COVER O-RING SET
FOR YAMAHA XVZ1200 VENTURE/ROYALE 83-84**

- Includes oil filter cover O-rings that normally aren't included with oil filters
- Should be changed every oil change

OE #	PART #
1J7-13440-90	0712-0410





0520-3805



0520-3806



0520-3807

STADIUM NUMBER PLATES FOR YAMAHA YZ450F 23

- Color-matched to OEM or in optional works colors
- Injection-molded plastic for precise fit and finish



COLOR	PART #	COLOR	PART #	COLOR	PART #
Black	0520-3805	White	0520-3806	Blue	0520-3807



PERFORMANCE PLUS BELTS

- Aramid cord provides strength and durability
- Specially formulated compounds that work best for each application

1142-0906



DESCRIPTION	PART #	DESCRIPTION	PART #	DESCRIPTION	PART #
ARCTIC CAT		CAN-AM (CONT)		CF MOTO (CONT)	
375 Auto 02	1142-0906	Maverick X3 Max Turbo 18-21	1142-0936	C-Force 800 19-20	1142-0987
400 2x4 Auto 04	1142-0906	Maverick X3 Turbo 17	1142-0935	U-Force 800 14-18	1142-0934
400 4x4 Auto 03-08	1142-0906	Maverick X3 Turbo 18-21	1142-0936	X8 12-14	1142-0934
TBX 400 04-06	1142-0906	Maverick Turbo 19-21	1142-0936	Z8 14-15	1142-0934
TRV 400 06-08	1142-0906	Defender HD10 18-20	1142-0935	Z-Force 800 16-20	1142-0934
500 4x4 Auto 00-09	1142-0907	Defender HD10 21	1142-0936	Z-Force 950 Sport 20	1142-0987
TBX 500 03-06	1142-0907	Defender Max HD10 18-21	1142-0935	C-Force 1000 19-20	1142-0987
TRV 500 03-08	1142-0907	Defender Max HD10 21	1142-0936	U-Force 1000 EPS 19-20	1142-0987
Wildcat 1000 (late build) 13	1142-0930	Maverick Max Turbo 19-21	1142-0936	Z-Force 1000 18-20	1142-0987
Wildcat 1000 14-15	1142-0930	Maverick Sport 1000 19-21	1142-0935	KAWASAKI	
Wildcat 4 13-15	1142-0930	Maverick Sport Max 1000R 19	1142-0935	Mule 600 (B1/B6F/B7F) 05-16	1142-0925
Wildcat 4X LTD 18	1142-0930	Maverick Trail 1000 18-21	1142-0935	Mule 610 4x4 (A1/C1/A6F/A7F/C6F/C7F) 05-16	1142-0925
Wildcat Sport 15-19	1142-0931	Traxter HD10 18-19	1142-0935	Mule SX 4x4 17-20	1142-0925
Wildcat Trail 15-20	1142-0931	Traxter HD10 20-21	1142-0936	Teryx 14-15	1142-0929
Wildcat X 13-19	1142-0930	Traxter Max HD10 20-21	1142-0936	Teryx 4 14-15	1142-0929
Wildcat XX 18-21	1142-0937	Defender 16-17	1142-0935	POLARIS	
CAN-AM		Defender Max 17	1142-0935	ACE 325 EFI 16	1142-0919
Defender HD8 18-21	1142-0935	Defender Max Lone Star Edition 18	1142-0935	Sportsman ACE 325 14-15	1142-0919
Defender Max HD8 18-21	1142-0935	Defender T 17	1142-0935	Sportsman 550 11-14	1142-0923
Maverick Trail 800 18-21	1142-0935	CF MOTO		Sportsman Touring 550 11-14	1142-0923
Traxter HD8 18-21	1142-0935	Z6 11-15	1142-0934	Sportsman XP 550 09	1142-0923
Maverick X3 900 HO 18	1142-0935	Z-Force 600 11	1142-0934	Sportsman X2 550 11-14	1142-0923
Maverick X3 Max Turbo 17	1142-0935	C-Force 800 15-18	1142-0934		

PERFORMANCE PLUS BELTS continued on next page



PERFORMANCE PLUS BELTS (CONT)

DESCRIPTION	PART #
POLARIS (CONT)	
ACE 570 EFI (w/ Polaris belt 3211149) 16	1142-0919
Ranger 700 4x4/6x6 07-08	1142-0914
Ranger 700 EFI Crew 4x4 08-09	1142-0914
Ranger 700 6x6 06-09	1142-0914
Ranger 800 4x4 10-11	1142-0914
Ranger 800 6x6 10-16	1142-0914
Ranger 800 14	1142-0914
Ranger Crew 800 11-14	1142-0914
Ranger HD 700 09	1142-0914
Ranger XP 700 06-09	1142-0914
Ranger XP 800 20	1142-0914
RZR 800 EPS 11	1142-0914
RZR S 800 09	1142-0923
RZR S 800 10-14	1142-0914
RZR XP 800 12	1142-0914
RZR 4 800 12-14	1142-0914
RZR 4 800 EPS RGE 11	1142-0914
Sportsman 800 05-06	1142-0914
Sportsman XP 850 09-14	1142-0923
Scrambler 850 13-21	1142-0923
Sportsman 850 10-21	1142-0923
Sportsman Touring 850 08-21	1142-0923
Sportsman Touring XP 850 18	1142-0923

DESCRIPTION	PART #
POLARIS (CONT)	
Sportsman X2 850 11	1142-0923
ACE 900 16-19	1142-0919
Ranger 900 13-19	1142-0919
Ranger Crew 900 14-16	1142-0919
Ranger XP 900 14-16	1142-0919
RZR 900/S 14-20	1142-0919
RZR S 900 15	1142-0919
RZR XP 900 11-13	1142-0919
RZR XP 4 900 13-17	1142-0919
RZR 4 XP 900 Jagged X 13	1142-0919
RZR 4 900 12-18	1142-0919
General 1000 16-21	1142-0919
Ranger 1000 17	1142-0919
Ranger 1000 20-21 (full size)	1142-1000
Ranger Crew 1000 17-18	1142-0919
Ranger Crew 1000 20 (full size)	1142-1000
RZR 1000 14-21	1142-0919
RZR 1000S/S4 19-21	1142-0919
RZR XP 1000/XP 4 1000/Tractor 14-21	1142-0919
RZR XP 1000 INTL 12	1142-0919
Scrambler 1000 14-21	1142-0923
Sportsman 1000 15-21	1142-0923
Sportsman Touring 1000 15-21	1142-0923

DESCRIPTION	PART #
POLARIS (CONT)	
Sportsman XP 1000 16-21	1142-0923
Ranger XP 500 05	1142-0914
SUZUKI	
Eiger 400 2x4/4x4 02-08	1142-0906
King Quad 400 08-20	1142-0906
King Quad 450 07-13	1142-0921
LTA500F Vinson Auto 4x4 02-04	1142-0907
LTA500F 00-01	1142-0907
King Quad 500 09-20	1142-0921
Vinson 500 4x4 05-07	1142-0907
TRACKER	
XTR1000 Side-bh-Side 20	1142-0937
YAMAHA	
Grizzly 4x4 15-21	1142-0913
Grizzly 550 09-14	1142-0913
Grizzly 600 02	1142-0913
Grizzly 660 02-08	1142-0913
Rhino 660 04-08	1142-0913
Wolverine X2 19-20	1142-0999
Wolverine X4 18-20	1142-0999
700 FI 4x4 10	1142-0913
Grizzly 700 07-16	1142-0913
Kodiak 700 16-21	1142-0913



0640-1688



0640-1686



0640-1687

ELITE SERIES UTV SIDE MIRRORS

- Fully adjustable three-way adjustable view orientation
- Low-profile universal clamps/mounting
- Spring-loaded dual-axis breakaway mechanism
- Anti-vibration technology
- Fit 38 mm-57 mm (1,5"-2,25") tubular roll cages
- Fit right or left
- Sold in a pair
- Come with black frame
- Add-on accent frames sold separately

DESCRIPTION	PART #
Elite Series UTV side mirrors (pr.)	0640-1688

ELITE SERIES PRO UTV SIDE MIRRORS

- Fully adjustable, three-way adjustable view orientation
- Adjustable blind spot mirror
- Low-profile universal clamps/mounting
- Spring-loaded dual-axis breakaway mechanism
- Anti-vibration technology
- Fit 38 mm-57 mm (1,5"-2,25") tubular roll cages
- Sold in a pair or each
- Fit right or left
- Come with black frame
- Add-on accent frames sold separately

DESCRIPTION	PART #
Elite Series Pro UTV side mirrors (pr.)	0640-1686
Elite Series Pro UTV side mirror (ea.)	0640-1687



CLUTCH COVER FOR YAMAHA YZ450F 23

- Specifically engineered to provide unparalleled durability and performance in a single, stylish component
- Ready to ride whenever you are, standing up against rocks, logs, boots and whatever else you may encounter in your adventures
- Billet aluminum construction provides incredible strength
- Double hard anodized to further enhance durability and wear resistance
- Has a greater depth than the OEM design, allowing increased oil capacity
- Made in the U.S.A.



DESCRIPTION	PART #
Clutch cover	0940-2115

RADIUSCX CLUTCH KIT FOR YAMAHA YZ450F 23

- RadiusCX is a top-of-the-line auto clutch product that brings together all of Rekluse's latest technology into one package
- TorqDrive® friction disk technology coupled with EXP and Core technology results in significant advancement in auto performance with exceptional hook-up, lever feel and durability
- Better starts, carry more speed, focus on the line and not on the clutch
- Perfect power delivery every time
- Maintain momentum and use the torque of your motor without worrying about stalling
- Increased power transfer over OEM
- Fully tunable to suit rider and/or terrain
- Optimized pressure plate design provides our best lever feel; consistent control and behavior

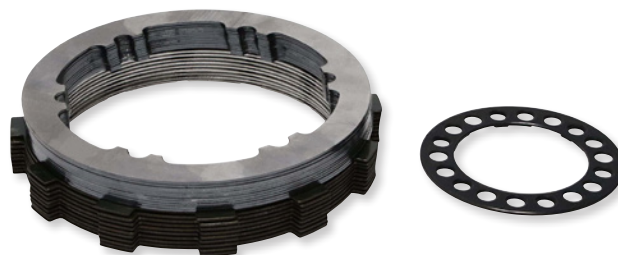


- Core components deliver improved oil flow and stability over wide temperature ranges
- TorqDrive friction disks provide longer clutch life with less adjustment over time
- Rekluse sleeves eliminate basket wear and notching

DESCRIPTION	PART #
RadiusCX clutch kit	1130-0685

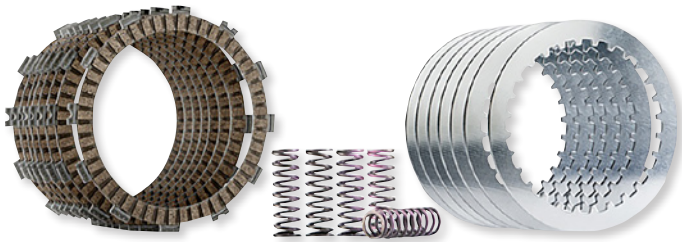
TORQDRIVE® CLUTCH PACK FOR YAMAHA YZ450F 23

- A high-performance manual clutch is now more accessible than ever with the TorqDrive Clutch Pack
- It's as easy as changing your clutch plates into your OEM components
- Proven at the highest levels of racing, TorqDrive thin friction disk technology allows more disks to fit in your OEM clutch's footprint, decreasing slip and unlocking the full power of your engine
- TorqDrive Technology also provides increased clutch life and decreased clutch fade
- The additional friction disks provide an average of a 25% gain in torque capacity over stock, while reducing lever pull by an average of 10% (figures vary by model)



- TorqDrive delivers stronger drive throughout the powerband, unlocking the bike's power without any expensive motor mods
 - Rekluse basket sleeves eliminate basket wear and notching
- NOTE: Not a replacement clutch pack for RadiusX, RadiusCX, or Core Manual TorqDrive.**

DESCRIPTION	PART #
TorqDrive clutch pack	1131-3879



**CLUTCH PLATE KIT
FOR YAMAHA YZF450 23**

- Developed with and recommended to enhance the performance of the OEM clutch basket, inner hub and pressure plates
- Provide optimum hook up with minimum heat build up
- Exceptional production tolerances and flatness
- All fiber plates use organic non-abrasive materials to avoid damage to rest of motor as plate materials break down and are circulated through engine by oil manufactured to OE specs using high quality materials

DESCRIPTION	PART #
Clutch plate kit	1131-3880

**CLUTCH COVER
FOR YAMAHA YZ450F 23**

- Improves heat dissipation
- Stronger than stock
- Precision machined from billet T-6 aircraft-quality aluminum
- Race proven by virtually every factory race team
- Hard-coated to resist boot wear

DESCRIPTION	PART #
Black	0940-2114



**BILLETPROOF PRESSURE PLATE
FOR YAMAHA YZ450F 23**

- Complete the "billet-proof" clutch package
- CNC-machined from a solid piece of aircraft-quality T-6 billet aluminum and then Akadized™ for the highest level of reliability
- Provides a more rigid pressure plate to inhibit flexing with heat buildup
- Used by the world's most talented riders

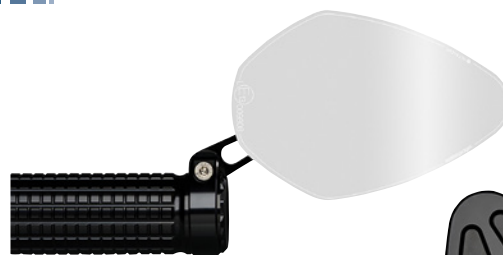
DESCRIPTION	PART #
Pressure plate	1132-1851



**BILLETPROOF® INNER HUB
FOR YAMAHA YZ450F 23**

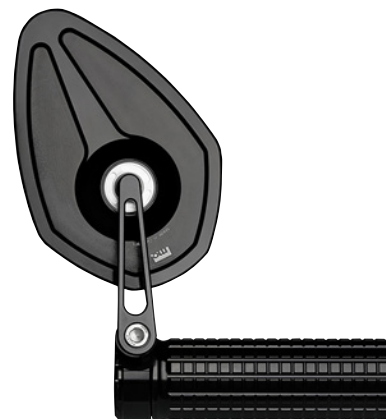
- Dissipates heat and improves clutch life and performance
- Machined to aerospace tolerances from billet T-6 aircraft-quality aluminum
- Allows clutch assembly to spin more true, thus creating less heat

DESCRIPTION	PART #
Inner hub	1132-1850



mo.view PACE FLIP BAR END MIRROR

- Mirror and mirror arms are CNC-machined from billet aluminum
- Has a special feature: a swivel mirror joint with defined detent angles at 45 ° intervals; the detent is designed very solid and can not be moved unintentionally
- Allows the mirror to be pivoted upwards, if necessary without changing the setting of the mirror
- Perfect for narrow passages, trailer or tight fits (garage)
- The handlebar end mirror mo.view street flip is slightly larger than the mo.view spy and fits perfectly to our bar end blinkers, mo.grip, mo.grip soft, mo.switch and mo.switch mini
- Mounts above or below the handlebars
- Fits left or right side
- Measures 100 mm dia.; 61 mm long stem
- Sold each



DESCRIPTION

mo.view pace flip bar end mirror

PART

0640-1698

mo.view STREET FLIP BAR END MIRROR

- Mirror and mirror arms are CNC-machined from billet aluminum
- Has a special feature: a swivel mirror joint with defined detent angles at 45 ° intervals; the detent is designed very solid and can not be moved unintentionally
- Allows the mirror to be pivoted upwards, if necessary without changing the setting of the mirror
- Perfect for narrow passages, trailer or tight fits (garage)
- The handlebar end mirror mo.view street flip is slightly larger than the mo.view spy and fits perfectly to our bar end blinkers, mo.grip, mo.grip soft, mo.switch and mo.switch mini
- Mounts above or below the handlebars
- Fits left or right side
- Measures 96 mm dia.; 61 mm long stem
- Sold each



DESCRIPTION

mo.view street flip bar end mirror

PART

0640-1696

mo.view CRUISE FLIP BAR END MIRROR

- Mirror and mirror arms are CNC-machined from billet aluminum
- Has a special feature: a swivel mirror joint with defined detent angles at 45 ° intervals; the detent is designed very solid and can not be moved unintentionally
- Allows the mirror to be pivoted upwards, if necessary without changing the setting of the mirror
- Perfect for narrow passages, trailer or tight fits (garage)
- The handlebar end mirror mo.view street flip is slightly larger than the mo.view spy and fits perfectly to our bar end blinkers, mo.grip, mo.grip soft, mo.switch and mo.switch mini
- Mounts above or below the handlebars
- Fits left or right side
- Measures 100 mm dia.; 61 mm long stem
- Sold each



DESCRIPTION

mo.view cruise flip bar end mirror

PART

0640-1697



Back view

2702-0290



NUCLEON FLEX PRO PROTECTION VEST

- Back Protector – Ergonomically contoured dual zone outershell
- Advanced polymeric blend with a solid cell structure core
- Solid cell core framed by a more flexible 32 cell structure
- Nucleon Flex technology layer on the central back zone
- Divided Chest Protector - Unique new longer length for more protection coverage in critical area
- Lightweight, ventilated and ultra-comfortable technology
- Rigorously tested and certified for proven performance in extreme temperatures

- Chest and back protector held securely in position by the breathable, soft-touch perforated mesh chassis that also delivers maximum airflow for enhanced rider comfort
- Back Protector: EN 1621-2:2014 (Level 2)
- Divided Chest Protector: EN 1621-2:2018 (Level 2)

SIZE	TRANSPARENT SMOKE RED/BLACK
XS	2702-0290
S	2702-0291

SIZE	TRANSPARENT SMOKE RED/BLACK
M	2702-0292
L	2702-0293

SIZE	TRANSPARENT SMOKE RED/BLACK
XL	2702-0294



NUCLEON FLEX PROi FULL BACK INSERT

- Hybrid technology Alpinestars' Nucleon Cell and Flex technologies providing ventilation and flexibility
- Ergonomically contoured dual zone outer shell
- Advanced polymeric blend with a solid cell structure core framed by a more flexible 3D cell structure
- Nucleon Flex technology layer on the central back zone
- Unique, new length reference for more protection coverage in critical area
- Lightweight, ventilated and ultra-comfortable technology
- Rigorously tested and certified for proven performance in extreme temperatures
- Back Protector: EN 1621-2:2014 (Level 2)



2702-0287

SIZE	TRANSPARENT SMOKE RED
S (Jackets XS/S/M)	2702-0287

SIZE	TRANSPARENT SMOKE RED
M (Jackets L/XL)	2702-0288

SIZE	TRANSPARENT SMOKE RED
L (Jacket XXL)	2702-0289



2707-0129



2707-0131

SEQUENCE YOUTH NECK ROLLS

- Hybrid youth neck guard with extended tail for high position stability
- Ergonomic design and engineered shape to fit kids from 6-10 years and youth from 10-14 years of age
- Double-density core is made from a soft PU foam base embedding a hard layer EVA core for energy dissipation
- Bottom and internal soft section (neck sides) provides comfort for the shoulders and neck, hard section on upper part provides stability and provides force distribution when the helmet is impacting

- Easy-to-use soft strap closure on the front part
- Highly compatible with all other protectors and jackets
- External cover can be pulled off of the core for washing via hook-and-loop closure at the rear
- See page 390 of the 2022 Parts Europe Helmet & Apparel catalog for the additional Alpinestars sequence youth neck roll

SIZE	BLACK/GRAY/BLUE	BLACK/GRAY/ORANGE
S/M	2707-0129	2707-0131

SIZE	BLACK/GRAY/BLUE	BLACK/GRAY/ORANGE
L/XL	2707-0130	2707-0132



2704-0678



2704-0684

2704-0681

2704-0685



SENTINEL LTD KNEE GUARDS

- Co-molded ABS/TPU chassis delivers comfort and durability
- Anatomical flush mounted hinge design allows natural knee movement
- Low-profile design minimizes weight and optimizes fit
- Lightweight molded EVA foam interior liner for premium comfort
- Strategic ventilation provides maximum cooling
- Post-latching top closure with adjustable hook-and-loop strap
- Stretch mesh calf-sleeve for cooling and comfort
- Top closure and calf sleeve feature silicone print to ensure secure placement
- Tested and certified according to European Standard EN 1621-1:2012
- Sold in pairs

YOUTH SENTINEL LTD KNEE GUARDS

- Co-molded ABS/TPU chassis delivers comfort and durability
- Anatomical flush mounted hinge design allows natural knee movement
- Low-profile design minimizes weight and optimizes fit
- Lightweight molded EVA foam interior liner for premium comfort
- Strategic ventilation provides maximum cooling
- Post-latching top closure with adjustable hook-and-loop strap
- Stretch mesh calf-sleeve for cooling and comfort
- Top closure and calf sleeve feature silicone print to ensure secure placement
- Tested and certified according to European Standard EN 1621-1:2012
- Sold in pairs

SIZE	WHITE	BLACK
S/M	2704-0678	2704-0681
L/XL	2704-0679	2704-0682
2X/3X	2704-0680	2704-0683

SIZE	WHITE	BLACK
S/M	2704-0684	2704-0685



TWIN AIR FOAMING POWERWASH

- Deep penetrating, biodegradable cleaning formula that cuts through grime, grit and grease in the garage, the workshop or at home
- Safe to use on most surfaces including plastic, aluminum, carbon fiber, painted, rubber, metals and more
- Not recommended for use on windows
- Sold each

DESCRIPTION	PART #
750 ml spray bottle	3704-0417



HEAVY-DUTY WET POWER WIPES

- Grime-fighting super-strong wet wipes for cleaning your bike, tools, even your hands
- Durable, damp, highly absorbent wet wipes work on oil, grease, paint, glues, varnishes and sealants
- Works without solvents
- Smells like eucalyptus
- Gentle on the hands, no sticky residue
- 70 wipes per pack

DESCRIPTION	PART #
70-pc. pack	3704-0418



LEG COVERS

- Waterproof polyester outer fabric that includes lateral pockets and reflective strips
- Anti-flap bars

DESCRIPTION	PART #
Honda SH 125/150	0521-2045
Honda SH 350	0521-2046

DESCRIPTION	PART #
Piaggio Vespa 200L/250/300/GT/GTS/GTV	0521-2047



GP LIGHT 2 CLIP-ONS

- Aluminum construction
- Ideal as replacement or crash handlebar
- Extremely lightweight: approximately 335 g per handlebar
- Fixed inclination angle 6° is the optimum compromise between a sporty and relaxed riding position
- Separate bolting for clamp and tube to avoid damage to fork in a crash
- Bolting of tube is at outer position for easier changing with standard tools
- Replacement tubes available separately
- Available with natural color clamps and black tubes
- Sold in pairs



FITS MODEL	PART #	FITS MODEL	PART #
BMW		BMW (CONT)	
M1000 RR (SM99) 20-23	0601-6249	S 1000 RR (K66/67) 23	0601-6249



MUE2 REARSETS

- Futuristic design combines high quality with simplified footpeg adjustability
- Footpeg positions as well as brake and gear levers can be adjusted to rider preference
- Fast and easily selectable footpeg positioning is done by a combination of a push and rotatable setting at only one point (five positions through pushing and four positions by rotating)
- Conversion to reverse GP shifting style works through the simple swapping of the shift rod position



- Brake and shift levers come with double ball bearings for perfect free of play function of the levers
- Carbon heel guards on both sides
- Aluminum construction
- ABE approved

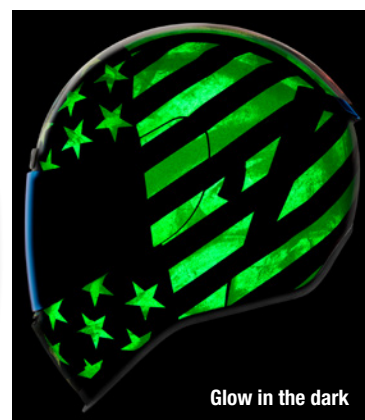
FITS MODEL	ADDITIONAL REVERSE SHIFTING	BLACK PART #
SUZUKI		
GSX R1300 ABS Hayabusa 21-23	Yes	1623-0594

CLUTCH/BRAKE LEVER GUARDS

- The two-part lever protector construction has remained, in addition the arm is made of resistant plastic-glass fiber mix and clamping element is made of hard-anodized aluminum
- New "round design" provides increased stability
- The holder can now be rotated and adjusted, which ensures individually selectable position improving comfort
- Clamping element provides additional support in the steering tube



DESCRIPTION	PART #	DESCRIPTION	PART #
Brake lever guard	0615-0382	Clutch lever guard	0615-0383



Glow in the dark

ECE 22.06

AIRFORM™ OLD GLORY HELMET

- Injection-molded polycarbonate shell for strength
- Internal airflow geometry and continuous venting system keep rider cool
- Fog-free Icon Optics™ shield with Rapid-Release™ system
- Prolock™ positive shield-locking system
- TracShield™ shield with tear-off posts available; sold separately
- Internal DropShield™ with exterior switch
- Comfortable sculpted neck roll
- Removable molded breath deflector
- Fully removable Hydradry™ 3-piece moisture wicking liner
- Internal speaker pockets work with Icon's RAU Bluetooth® device

- See helmet size guide on page 44 of the 2023 Parts Europe Helmet & Apparel catalog before ordering
- For replacement parts and accessories, see pages 120-124 of the 2023 Parts Europe Helmet & Apparel catalog
- For the complete line of Icon® Airform™ helmets see pages 32-44 of the 2023 Parts Europe Helmet & Apparel catalog
- All World Standard meets or exceeds the following: DOT FMVSS 218 (USA), ECE R22.06 (Europe) & PSC (Japan) helmet safety standards

NOTE: Does not ship with PSC certification stickers unless purchased from an authorized dealer in that country.

NOTE: The DropShield™ visor must only be used while the main face shield is in the fully closed position.

SIZE	PART #	SIZE	PART #	SIZE	PART #	SIZE	PART #
XS	0101-14782	M	0101-14784	XL	0101-14786	3X	0101-14788
S	0101-14783	L	0101-14785	2X	0101-14787		



A



B



VECTOR PRO HELMETS

- 19 openings for effective ventilation
- Reinforced with embedded rigid frame
- Vacuum-formed polycarbonate
- Extended side protection
- Comfort liner with quick-dry antibacterial fabric
- Replaceable inner liner pads

- Fully adjustable dial sizing system
- Quick-release chin strap buckle
- Adjustable visor for goggles
- Designed to accommodate eyewear
- This helmet has been tested and certified according to European Standard EN 1078:2012

SIZE	(A) GLOSSY MID-BLUE/LIGHT GRAY	(B) MATTE BLACK/EBONY TANGERINE
S (51-55 cm)	0151-0174	0151-0177
M (55-59 cm)	0151-0175	0151-0178
L (59-63 cm)	0151-0176	0151-0179



MISSILE TECH HELMET

- Outer shell is constructed using a blend of aramid fiber and fiberglass for strength and lightness
- Smooth profile is streamlined and free of any external features that might act as a load point in impact
- Surface curvature promotes reduced friction on impact, allowing deflection and the most efficient transfer to protect the rider's head
- MIPS for mitigation against the causes of brain injuries
- Unique visor release system, which ensures the mounting is held securely in place for riding over the most extreme terrain, yet provides the right level of resistance to ensure the visor detaches from the helmet in significant impact
- 22 vents for maximum airflow and ventilation
- Removable air vent on the chin for additional airflow
- Removable air filter on mouth opening for easy cleaning

SIZE (CM)	AIRLIFT GLOSSY BLACK/FLUO YELLOW
S (55-56 cm)	0151-0190
M (57-58 cm)	0151-0191



- Vented chin strap for additional airflow when riding
- Wide aperture is designed to accommodate a wide variety of goggles
- ERS system for quick and safe extraction in emergency situations
- D-ring closure for a secure closure
- Hydration kit compatible
- This helmet has been tested and certified according to European Standard EN 1078:2012

SIZE (CM)	AIRLIFT GLOSSY BLACK/FLUO YELLOW
L (59-60 cm)	0151-0192
XL (61-62 cm)	0151-0193



MISSILE PRO HELMET

- Outer shell is constructed using a blend of aramid fiber and fiberglass for strength and lightness
- Smooth profile is streamlined and free of any external features that might act as a load point in an impact
- Surface curvature promotes reduced friction on impact, allowing deflection and the most efficient transfer to protect the rider's head
- Unique visor release system, which ensures the mounting is held securely in place for riding over the most extreme terrain, yet provides the right level of resistance to ensure the visor detaches from the helmet in a significant impact
- Additional thicker cheek pads are available for a tighter fit
- 22 vents for maximum airflow and ventilation
- Removable air vent on the chin for additional airflow

SIZE (CM)	COSMOS GLOSSY RED/WHITE
XS (53-54 cm)	0151-0199
S (55-56 cm)	0151-0200
M (57-58 cm)	0151-0201

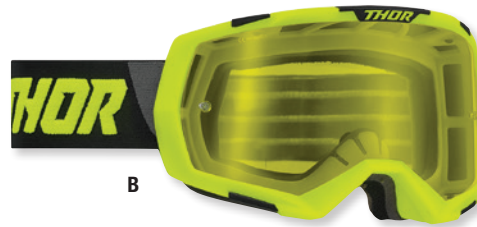


- Removable air filter on mouth opening for easy cleaning
- Vented chin strap for additional airflow when riding
- Wide aperture is designed to accommodate a wide variety of goggles
- ERS system for quick and safe extraction in emergency situations
- D-ring closure for a secure closure
- Hydration kit compatible
- Available in two outer shell sizes and three EPS sizes to allow riders to get the fit correct for them
- This helmet has been tested and certified according to European Standard EN 1078:2012

SIZE (CM)	COSMOS GLOSSY RED/WHITE
L (59-60 cm)	0151-0202
XL (61-62 cm)	0151-0203



A



B



C



D



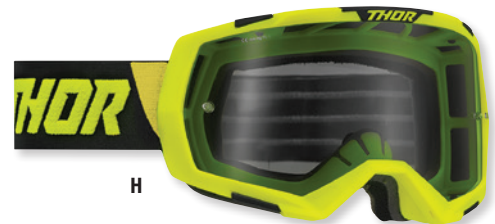
E



F



G



H



I



J



REGIMENT GOGGLES

- FOV+ design for enhanced peripheral vision
- Adjustable 45mm strap with silicone print provides secure placement
- Die-cut polycarbonate lens with tinted lens in select models
- Anti-fog and scratch resistant lens coating for optical clarity
- Molded intake ports for ventilation and fog resistance

- Triple layer face foam for moisture management and comfort
- Injection molded frame
- Dual post tear off system
- Goggle and lens tested and certified to European Standard EN 1938:2010

COLOR	PART #
(A) Black/gray (smoke lens)	2601-2797
(B) Acid/black (yellow lens)	2601-2798
(C) Blue/navy (blue lens)	2601-2799
(D) Red/black (clear lens)	2601-2800

COLOR	PART #
(E) White/black (clear lens)	2601-2801
(F) Flo orange/black (clear lens)	2601-2802
(G) Flo pink/black (smoke lens)	2601-2803
(H) Lime/black (smoke lens)	2601-2965

COLOR	PART #
(I) Camo/black (smoke lens)	2601-2966
(J) Red/white/blue (blue lens)	2601-2967



A



B



HYDE XT DRYSTARXF® MID-SEASON GLOVES

- Mid-length gloves are engineered to deliver enhanced feel and sensitivity while providing a high level of protection, stretch and flexibility
- Equipped with Alpinestars' DrystarXF® membrane for superior breathability and waterproof performance, and an ergonomic and extended shape, viscoelastic knuckle for greater coverage and effective impact protection of the knuckle area
- Modular Laminated DrystarXF membrane provides superior breathability
- This membrane incorporates hydrophilic technology where water vapor is absorbed from the body and desorbed on the outside to provide 100% waterproof performance and is easily packable and fast drying
- Integrated ultra-slim closure flap with a wrist strap for a secure closure
- Alpinestars finger bridge

SIZE	(A) BLACK/BLACK	(B) BLACK/BRIGHT RED
S	3310-0962	3310-0968
M	3310-0963	3310-0969
L	3310-0964	3310-0970

- Touchscreen compatible thumb and index finger
- The following standards apply to this product: CE certified CE Level 1 KP

SIZE	(A) BLACK/BLACK	(B) BLACK/BRIGHT RED
XL	3310-0965	3310-0971
2X	3310-0966	3310-0972
3X	3310-0967	3310-0973

NEO WATERPROOF JACKET

- Reflective details
- Zip front closure has been engineered to be durable and easy to use
- Front chest pocket and side pockets on front for real-world practicality and secure storage of items
- Back compartment can accommodate a Nucleon back protector, available as an optional upgrade
- Waterproof inner pocket for additional secure storage
- The following standards apply to this product: CE Category II PPE Regulation EN 17092-4:2020 – A Class



SIZE	BLACK	SIZE	BLACK	SIZE	BLACK	SIZE	BLACK
S	2820-6001	L	2820-6003	2X	2820-6005	4X	2820-6007
M	2820-6002	XL	2820-6004	3X	2820-6006		




SMX WATERPROOF JACKETS

- DWR (Durable Water Repellent) treatment on the fixed waterproof membrane for additional wet weather performance
- Strategically positioned stretch panel inserts have been designed to accommodate Alpinestars Airbag System, allowing expansion when the airbag inflates but also offering a high level of anatomical performance and a superior fit when riding without the system fitted
- Tech-Air® 5 ready
- Tech-Air® is the world's first completely electronic, self-contained, full independent upper body motorcycle airbag system with no bike-to-rider set-up configurations required
- An engineered sports body mapped fit and pre-curved sleeves for optimal riding performance
- Detachable thermal liner (100g body, 80g sleeves) allow the jacket to be configured according to the climate
- Nucleon Flex Plus armor on shoulder and elbow (Nucleon chest Level 1 and Nucleon Level 1 and 2 back protectors available as an accessory upgrade)

SIZE	(A) BLACK/GRAY	(B) BLACK/GRAY/RED
S	2820-5987	2820-5994
M	2820-5988	2820-5995
L	2820-5989	2820-5996
XL	2820-5990	2820-5997

- DFS Lite shoulders with dynamic friction shield on the shoulder for enhanced abrasion resistance
- Rear of the jacket is elongated for enhanced coverage when riding
- Shock cord waist for a secure closure
- Chassis constructed from a blend of poly-fabric and stretch softshell for comfort, durability and light weight, with a 2L waterproof membrane for proven wet weather performance
- Two front zippered pockets, two chest pockets an inner waterproof document pocket and two inner pockets on the liner for safe and secure storage of valuables
- Zip front closure has been engineered to be durable and easy to use
- Low profile sports collar construction with soft lining for enhanced rider comfort
- The following standards apply to this product:
CE – Category II prEN17092 standards – A class

SIZE	(A) BLACK/GRAY	(B) BLACK/GRAY/RED
2X	2820-5991	2820-5998
3X	-	2820-5999
4X	2820-5993	2820-6000



TECH 3 BOOTS

- Upper boot is made from innovative, microfiber material that is flexible and lightweight
- Light microfiber on front and rear bellows for more comfort in flexible areas
- Toe box is made of synthetic material for high abrasion resistance
- Extended PU synthetic gaiter helps seal out water and dirt
- Contoured TPU calf plate, TPU higher medial plate, TPU outer lateral ankle guard and TPU heel counter provide support and resistance to impact
- Rear TPU gaiter patch applied on the top of the TPU calf protector for added impact resistance and comfort on the rear flex zone
- Injected TPU shin plate connected to the TPU medial panel
- Hook-and-loop upper boot closure with TPR flap for a custom fit and support
- TPU higher medial guard is designed with a technical texture for improved grip
- Biomechanical medial blade system allows a good front/rear flex to provide support and impact resistance to the ankle
- Ergonomic TPU triple buckle straps wrap harmoniously from the front flex medial protector to the lateral side without compromising the flex of the boot
- Closure system includes three polymer buckles with ratchet memory and a quick-release/locking system with self-aligning design for easy, precise closure; buckles are replaceable



- Innovative one-piece TPU injected dual-compound foot shell is reinforced with a metal shank inside an injected toe reinforcement
- Soft foam surrounds the ankle and boot collar for comfort and shock-absorbing performance
- Boot lining is textile for added comfort
- Replaceable EVA footbed with a textile lining on top
- Exclusive high-grip rubber sole compound replaceable outsole
- The following standards apply to this product: CE-certified to EN 13634:2017

SIZE	RED/BLUE/FLUO YELLOW
7	3410-2839
8	3410-2840

SIZE	RED/BLUE/FLUO YELLOW
9	3410-2841
10	3410-2842

SIZE	RED/BLUE/FLUO YELLOW
11	3410-2843
12	3410-2844

SIZE	RED/BLUE/FLUO YELLOW
13	3410-2845
14	3410-2846

TECH 5 BOOTS

- Upper constructed from innovative and lightweight microfiber material with action leather on toe box
- Redesigned instep and Achilles accordion flex zones
- Contoured TPU calf protector plate, TPU higher medial protector and TPU outer lateral ankle
- Injected TPU shin plate connected with the TPU medial protector panel
- Hook-and-loop upper closure and TPR flap for broad-ranging calf fit adjustment and support
- TPU higher medial protector is designed with technical texture for improved grip
- Bio-mechanical pivot
- Ergonomic TPU triple buckle straps
- Incorporates innovative one-piece TPU injected dual-compound foot shell, reinforced by a metal shank inside and co-injected toe reinforcement
- TPU heel patch connected with shell and lateral/medial TPU sections
- Extended PU synthetic gaiter helps seal out excessive water and dirt entry
- Soft polyfoam surrounds the ankles and collar
- Full inner textile lining
- Closure system includes four polymer buckles with an innovative closure system that includes a ratchet with memory and a quick-release/locking system with self-aligning design for precise closure; all buckles are replaceable



- Replaceable anatomic EVA footbed with textile lining on top
- Exclusive high-grip rubber compound outsole
- Sole is replaceable
- The following standards apply to this product: CE-certified to EN 13634:2017

SIZE	(A) FLUO ORANGE/BLACK/FLUO YELLOW	(B) BLUE/WHITE
7	3410-2815	3410-2823
8	3410-2816	3410-2824
9	3410-2817	3410-2825

SIZE	(A) FLUO ORANGE/BLACK/FLUO YELLOW	(B) BLUE/WHITE
10	3410-2818	3410-2826
11	3410-2819	3410-2827
12	3410-2820	3410-2828

SIZE	(A) FLUO ORANGE/BLACK/FLUO YELLOW	(B) BLUE/WHITE
13	3410-2821	3410-2829
14	3410-2822	3410-2830




A



B

TECH 7 ENDURO DRYSTAR® BOOTS

- Upper is constructed from light, innovative microfiber that is flexible and abrasion-resistant
- Innovative, evolutionary TPU shin plate construction for a greater range of fitment
- Shin plate features a reinforced hook-and-loop closure for a comfortable, customized fit
- Shin zone incorporates a TPU blade system engineered to prevent frontal hyperextension and offer greater flex control
- Specially designed sole provides enduro riders with superior grip, durability, feel and a high level of structural rigidity
- Wide entry aperture for convenience with a hook-and-loop upper closure with TPU flap to allow a wide range of calf fitment adjustment and support
- Medial-facing area is constructed from one-piece TPU panel with a honeycomb structure for maximum grip contact with the bike and improved heat and abrasion resistance
- Top rear flexion of the boot is supported around the calf by an innovative TPU sliding blade system which dissipates the friction
- Ergonomic buckle system offers a secure and highly personalized fit
- Innovative TPU lateral ankle protection provides a biomechanical link between the middle lateral and the bottom lateral of the boot
- Instep and Achilles accordion flex zones constructed for superior control and support
- TPU lower shell is reinforced with a metal shank and includes toe reinforcement for impact and abrasion resistance
- Extended microfiber gaiter helps seal out water and dirt
- Closure system includes polymer buckles plus an aluminum frame with innovative, self-aligning quick-release closures for a custom, secure fit
- All buckles are replaceable
- Breathable mesh 3D liner with anti-sliding microfiber suede reinforcement on the heel area
- Soft poly-foam surrounds the ankles and collar to offer comfort and shock-absorbing performance
- Removable anatomic footbed
- Exclusive high-grip rubber dual-density compound outer sole
- Sole is replaceable
- Membrane provides 100% protection against water penetration
- The following standards apply to this product: CE-certified to EN 13634:2017

DRYSTAR®

SIZE	(A) GRAY/SAND DRYSTAR®	(B) BLACK/WHITE DRYSTAR®
7	3410-2847	3410-2855
8	3410-2848	3410-2856
9	3410-2849	3410-2857
10	3410-2850	3410-2858

SIZE	(A) GRAY/SAND DRYSTAR®	(B) BLACK/WHITE DRYSTAR®
11	3410-2851	3410-2859
12	3410-2852	3410-2860
13	3410-2853	3410-2861
14	3410-2854	3410-2862




A



B

TECH 10 BOOTS

- Combines dual front and rear blade connectors
- Provides a complete and seamless flexion control system, from the foot shell all the way up to the shin plate
- Engineered to 'float' freely between the lower and upper boot construction
- Asymmetrical, dual pivot arms on boot frame
- A unique feature is the ankle control system developed in the outer shell construction, allowing natural ankle movement, vertical compression control and improved impact protection
- Asymmetrical medial and lateral double pivot system for improved levels of flexibility and precision for both independent and synchronized movement
- Redesigned dual-density TPU rear blade system engineered to prevent hyperextension while offering improved flex control and impact resistance
- Dynamic Heel Compression Protector (DHCP), an innovative safety feature which includes a fully integrated collapsible heel area with expanded poly-foam to absorb high impact energies during a crash
- Features lighter, anatomically redesigned medial and lateral torsion arms
- Double pivot system allows the Tech 10 to retain its integrity while flexing
- Low-profile, pull-on design for reduce material build, less weight and to facilitate easier and quicker wearing
- Innovative flexion inserts work seamlessly with new flex support system for ultimate in performance
- TPU protection and shock absorbing padding on the heel and ankles
- Constructed from a dual density compound and combined with the rear blade system

SIZE	(A) BLACK/FLUO RED	(B) BLACK/FLUO RED/ORANGE/WHITE
7	3410-2759	3410-2767
8	3410-2760	3410-2768
9	3410-2761	3410-2769
10	3410-2762	3410-2770

- Energy dissipating shin plate features a new anatomic design for reduced surface area and weight-saving
- Completely redesigned sole with proprietary grip sculpturing to improve foot-peg performance, grip and mud and water runoff
- Exclusive dual-compound sole is seamlessly integrated to the multi-density foot base structure with built-in support
- Slim-line buckles include high-impact bridge closures which are cold forged for precision and strength
- Closure system features contra-closure, doubling closure security and a quick release/locking system with self-aligning, memory, design for easy, precise closure and improved riding performance and security
- Soles and buckles are easily replaceable
- Chassis combines advanced lightweight microfiber and impact and abrasion resistant TPU shell
- Foot shell features five different compounds in a single lightweight piece to offer strength while maintaining flexibility and structural integrity
- Soft microfiber gaiter helps seal out excessive water and dirt entry
- Poly-fabric lining with 3D open cell foam incorporates anti-slip suede in heel area, keeping the foot located inside the boot
- The following standards apply to this product:
CE-certified to EN 13634:2017

SIZE	(A) BLACK/FLUO RED	(B) BLACK/FLUO RED/ORANGE/WHITE
11	3410-2763	3410-2771
12	3410-2764	3410-2772
13	3410-2765	3410-2773
14	3410-2766	3410-2774