



## LV CORSA SLIP-ON MUFFLER FOR APRILIA RSV4 1100 RR/TUONO V4 1100/FACTORY/RR 19-22

- AISI 304 stainless steel
- Shot blasted end cap with laser-etched LV Logo
- Metallic ceramic-based black paint with a matte finishing
- Laser-etched LV logo
- Laser-cut bracket
- Racing "LV" sticker resistant to high temperature included in the packaging

### TAILPIPE/MUFFLER/END CAP

Stainless/carbon/NA



APPROVALS

PART #

1811-4307



## LV-12 SLIP-ON MUFFLERS FOR HONDA NT1100 22-23

- Body made from titanium or stainless steel with a raw or matte black finish
- Dual flow muffler
- Carbon fiber end cap
- Laser-etched logo

### TAILPIPE/MUFFLER/END CAP

Stainless/stainless/carbon

Stainless/black stainless/carbon

Stainless/titanium/carbon

### APPROVALS

ECE type approval

ECE type approval

ECE type approval

### PART #

1811-4427

1811-4428

1811-4429



2330-0267



2001-2601

## MEMPHIS SHADES BATWING FAIRING FOR HONDA CMX1100 REBEL 21-22

- Features clean aerodynamic shape
- Inner fairing structure is black ABS
- Fairing outer shell is opaque black Lucite® with a class A finish that looks great as is, or can easily be painted
- Memphis Shades exclusive No-Tool Trigger-Lock mounting kits feature a detach system that allows you to quickly and easily remove or install your fairing, or swap out with other Memphis Shades windshields, sportshields or fairings
- Trigger-Lock kits are available in a combination of CNC-machined aluminum plates, stainless steel bolts and aluminum anchors or black E-coated plates, bolts and anchors for a clean appearance that's built to last
- Fairing is predrilled and fitted with push-out hole plugs for easy wind deflector installation
- Windshields are available in four heights, and come in gradient black, as well as clear and solar (a light tint with 72% visible light transmission) for Spoiler windshields; see page 316 of the 2023 Parts Europe Street catalog
- Optional wind deflectors for increased downward airflow, windshield tri-pouch for storage and fairing trims for style are also available; see page 320 of the 2023 Parts Europe Street catalog
- Now you can add an optional sound system to the Batwing Fairing with Hogtunes' new speaker system, PART #4405-0218; see page 1892 of the 2023 Parts Europe Street catalog for more details
- See page 316 of the 2023 Parts Europe Street catalog for the full line of Memphis Shades Batwing Fairings

**NOTE: Batwing Fairing is not compatible with any other fairing windshields, wind deflectors or accessories.**

DESCRIPTION	PART #	DESCRIPTION	PART #
Batwing fairing	<b>2330-0267<sup>1</sup></b>	Black Trigger-Lock Mounts	<b>2321-0766</b>
Headlight extension	<b>2001-2601</b>		

<sup>1</sup> Requires headlight extension kit 2001-2601 (sold separately).



2330-0266



2321-0767

**GAUNTLET FAIRING  
FOR HONDA CMX1100 REBEL 21-22**

- Gauntlet Fairing is a unitized quarter fairing with a matte black finish inside
- Class A gloss black finish outside
- Smoked windscreen
- ABS headlight bezel
- "Factory" finish looks great as is, or can easily be painted to really achieve the next level of custom
- Custom fit, model-specific mounting kits feature Memphis Shades exclusive Trigger-Lock mounting system – on and off without tools

**DESCRIPTION**

**PART #**

Gauntlet fairing	<b>2330-0266<sup>1</sup></b>
Black Trigger-Lock Mounts	<b>2321-0767</b>

<sup>1</sup> Requires headlight extension kit PART #2001-2601 (sold separately).



2321-0764



2321-0765

**NO-TOOL TRIGGER-LOCK MOUNT KITS FOR SPORTSHIELDS**

- The revolutionary No-Tool Trigger-Lock mounting kits feature a detach system that allows you to quickly and easily remove or swap out your Sportshield without the use of any tools
- A pair of latches lock the windshield down until the spring-loaded "trigger locks" are intentionally disengaged, allowing the rider to remove the windshield
- Kit is a combination of CNC-machined aluminum plates and anchors, stainless steel hardware, gray polymer bushings and glass-filled nylon latches or "Night Shades" black version, which is a gradient black windshield with black E-coated stainless-steel straps, fittings and hardware for a black-on-black sinister look
- Kit is custom-fit to each style of bike for no-hassle installation
- See page 291 of the 2023 Parts Europe Street catalog for the full line of No-Tool Trigger-Lock Mount Kits for Sportshields

FITS MODEL	BLACK PART #	FITS MODEL	BLACK PART #
<b>HONDA</b>		<b>HONDA (CONT)</b>	
CMX300 Rebel 20-22	<b>2321-0764<sup>1</sup></b>	CMX1100 Rebel 21-22	<b>2321-0765<sup>1</sup></b>
CMX500 Rebel 20-22 (except 21-22 ABS SE)	<b>2321-0764<sup>1</sup></b>		

<sup>1</sup> Fitment limited to El Paso Sportshields with 9" headlight opening.

# SENA

## 5R BLUETOOTH COMMUNICATOR

- Main module: (3" x 1,6" x 1,1")
- Speaker driver unit: 40 mm – thickness 7,3 mm
- Boom microphone: length 150 mm
- HD speakers
- Wire between speakers: length 510 mm
- Weight: main module - 42 g (1,48 oz)
- Operating temperature: -10 °C - 55 °C (14 °F - 131 °F)
- Bluetooth 5,1
- Headset Profile (HSP)
- Hands-Free Profile (HFP)
- Advanced Audio Distribution Profile (A2DP)
- Audio Video Remote Control Profile (AVRCP)
- Working Distance: up to 700 m (760 yards) in open terrain
- Supports up to: 2 riders
- Noise Cancellation: Advanced Noise Control™



- Codec: Built-in SBC Codec
- Talk time: 16 hours
- Charging time: 2,5 hours
- Type: Lithium Polymer Battery

DESCRIPTION	PART #
5R communicator	4402-0960

## 5R LITE

- Main module: 76 mm x 41 mm x 19 mm (3" x 1,6" x 0,74")
- Speaker driver unit: 40 mm – thickness 7 mm
- Boom microphone: length 140 mm
- Wire between speakers: length 520 mm
- Weight: main module - 32 g (1,12 oz)
- Operating temperature: -10 °C - 55 °C (14 °F - 131 °F)
- Bluetooth 5.1
- Headset Profile (HSP)
- Hands-Free Profile (HFP)
- Advanced audio distribution profile (A2DP)
- Audio video remote control profile (AVRCP)
- Working distance: up to 700 m (0,4 mi) in open terrain
- Supports up to: 2 riders
- Noise cancellation: Advanced Noise Control™



- Codec: built-in sbc codec
- Talk time: 8 hours
- Charging time: 2,5 hours
- Type: lithium polymer battery

DESCRIPTION	PART #
5R Lite	4402-0961



## ACCESSORY KIT FOR SFR

- Includes speakers, wired boom and standard microphone, fasteners, mic sponges and more

DESCRIPTION	PART #
Accessory kit for SFR	4402-0882

# SENA

## ACCESSORIES FOR 50R

- Take your 50R's audio to the next level with SOUND BY Harman Kardon speakers
- These premium speakers were created with the audio experts at Harman Kardon to provide world-class sound for the 50R
- The speaker accessory is compatible with all versions of the Sena 50R, allowing existing 50R owners to upgrade to SOUND BY Harman Kardon audio
- For upgraded speakers and microphone, choose the 50R Mounting Accessory Kit with SOUND BY Harman Kardon speakers and microphone
- The 50R Mounting Accessory Kit with SOUND BY Harman Kardon features enhanced speakers and microphone, which were developed alongside the audio experts at Harman Kardon
- The redesigned microphone and expertly crafted speakers allow the 50R to capture and deliver high quality incoming and outgoing audio



4402-0965

DESCRIPTION	PART #	DESCRIPTION	PART #
SOUND BY Harman Kardon speakers	4402-0899	50R Mounting Accessory Kit with SOUND BY Harman Kardon	4402-0965



4405-0890

## ACCESSORIES FOR 50S

- Take your 50S to the next level with SOUND BY Harman Kardon speakers
- Expertly crafted speakers allow the 50S to deliver an unmatched audio experience while riding
- These speakers send crystal clear audio to riders' ears while listening to music, chatting over the intercom, taking phone calls, and more
- Compatible with all versions of the 50S
- Universal clamp kit includes SOUND BY Harman Kardon speakers and microphone
- Universal Clamp Kit with SOUND BY Harman Kardon is compatible with all versions of the 50S, allowing existing 50S users to upgrade their audio
- The redesigned microphone and expertly crafted speakers allow the 50S to capture and deliver unmatched incoming and outgoing audio



4402-0966

DESCRIPTION	PART #	DESCRIPTION	PART #
SOUND BY Harman Kardon speakers	4405-0890	Universal Clamp Kit with SOUND BY Harman Kardon	4402-0966

## 50C EARBUD ADAPTER

- Y-Splitter for headset



DESCRIPTION	PART #
Earbud adapter	4402-0942



**VANCE  
HINES**

**ADVENTURE HI-OUTPUT 500 SLIP-ON MUFFLER  
FOR BMW 1250GS 19-22**

- The largest capacity exhaust ever made by Vance & Hines
- Manufactured with a 12,7 cm diameter, high-grade, 304 stainless steel tube and delivers increased hp and tq
- Baffle design delivers rich boxer rumble while meeting SAE J2825 decibel levels
- CNC-machined brushed works finish with billet aluminum end cap
- Compatible with BMW factory panniers and centerstand

**DESCRIPTION**

Adventure hi-output 500 slip-on muffler

**PART #**

**1811-4244**

**SW-MOTEC®**

**CENTERSTAND  
FOR KAWASAKI KLR 650 08-18**

- Bike-specific design allows for easy mounting and a high cornering clearance
- Easily lifts up motorcycle
- Highly corrosion-resistant
- Ideal for keeping the load off the tires during long periods of storage
- Black powdercoated surface
- Mounting hardware included



**DESCRIPTION**

Centerstand

**PART #**

**0510-0637**



2001-2612

**WRS**

**HEADLIGHT PROTECTION LENSES**

- Adds anti-impact protection while complementing the lines of the bike
- No modifications required; easy to install and remove
- Mounting hardware included

**FITS MODEL**

**BMW**

R1250GS/Adventure 18-21

**PART #**

**2001-2612**

2001-2611



**FITS MODEL**

**DUCATI**

DesertX 22

**PART #**

**2001-2611**



## PARTS EUROPE INNER TUBES

### INNER TUBES

- Manufactured to the highest quality as approved by all the Japanese motorcycle manufacturers
- Available in standard and heavy-duty versions
- Each tube is individually boxed with a full range of sizes and valve stem types clearly marked on each box end

### STANDARD TUBES

- Wide range of sizes available for rim diameters from 8" through 23"
- "Real butyl tubes" made from 100% butyl polymer, unlike other "butyl" tubes, which are blended with butyl polymer and natural rubber
- 100% butyl tube minimizes natural air leakage while maintaining air pressure for a longer period of time

FITS RIM SIZE	FITS TIRE SIZE(S)	STEM TYPE	PART #
<b>STANDARD</b>			
8"	2.50	TR-87	<b>0350-0304</b>
8"	3.00	TR-87	<b>0350-0305</b>
8"	70/100	TR-87	<b>0350-0305</b>
8"	3.50/4.00	JS-244A	<b>0350-0306</b>
8"	4.00	JS-244A	<b>0350-0307</b>
8"	15.5X5.5	JS-244A	<b>0350-0307</b>
10"	2.50/2.75	TR-4	<b>0350-0309</b>
10"	2.50/2.75	JS-244A	<b>0350-0310</b>
10"	3.00	TR-4	<b>0350-0311</b>
10"	80/90	TR-4	<b>0350-0311</b>
10"	3.00	JS-244A	<b>0350-0312</b>
10"	80/90	JS-244A	<b>0350-0312</b>
10"	3.00	TR-87	<b>0350-0313</b>
10"	80/90	TR-87	<b>0350-0313</b>
10"	3.50/4.00	TR-4	<b>0350-0314</b>
10"	3.50/4.00	JS-244A	<b>0350-0315</b>
10"	3.50/4.00	TR-87	<b>0350-0316</b>
12"	2.75	TR-4	<b>0350-0317</b>
12"	3.00	TR-4	<b>0350-0318</b>
12"	4.00	TR-87	<b>0350-0319</b>
14"	2.25/2.50	TR-4	<b>0350-0320</b>
14"	2.75	TR-4	<b>0350-0321</b>
14"	3.00/3.60	TR-4	<b>0350-0322</b>
14"	3.25/3.50/4.10	TR-4	<b>0350-0323</b>
14"	110/80	TR-4	<b>0350-0323</b>
14"	110/90	TR-4	<b>0350-0323</b>
15"	2.50/2.75	TR-4	<b>0350-0324</b>
15"	130/90	TR-4	<b>0350-0325</b>
15"	140/80	TR-4	<b>0350-0325</b>
15"	140/90	TR-4	<b>0350-0327</b>
15"	150/80	TR-4	<b>0350-0327</b>
15"	140/90	PV-78	<b>0350-0328</b>
15"	150/90	PV-78	<b>0350-0328</b>
15"	170/80	PV-78	<b>0350-0329</b>
16"	2.25/2.50	TR-4	<b>0350-0330</b>
16"	2.75/3.00	TR-4	<b>0350-0331</b>

FITS RIM SIZE	FITS TIRE SIZE(S)	STEM TYPE	PART #
<b>STANDARD (CONT)</b>			
16"	80/100	TR-4	<b>0350-0331</b>
16"	90/100	TR-4	<b>0350-0331</b>
16"	3.25/3.50	TR-4	<b>0350-0332</b>
16"	4.00/4.60	TR-4	<b>0350-0333</b>
16"	120/90	TR-4	<b>0350-0333</b>
16"	5.10	TR-4	<b>0350-0334</b>
16"	130/90	TR-4	<b>0350-0334</b>
17"	70/100	TR-4	<b>0350-0335</b>
17"	80/90	TR-4	<b>0350-0335</b>
17"	2.25/2.50	TR-4	<b>0350-0336</b>
17"	2.75/3.00	TR-4	<b>0350-0337</b>
17"	3.25/3.50	TR-4	<b>0350-0338</b>
17"	100/100	TR-4	<b>0350-0338</b>
17"	4.00/5.10	TR-4	<b>0350-0339</b>
17"	110/90	TR-4	<b>0350-0339</b>
17"	120/80	TR-4	<b>0350-0339</b>
17"	120/90	TR-4	<b>0350-0339</b>
17"	130/80	TR-4	<b>0350-0339</b>
18"	2.25/2.50	TR-4	<b>0350-0340</b>
18"	2.75/3.00/3.60	TR-4	<b>0350-0341</b>
18"	90/90	TR-4	<b>0350-0341</b>
18"	100/80	TR-4	<b>0350-0341</b>
18"	3.25/3.50/4.10	TR-4	<b>0350-0342</b>
18"	100-90	TR-4	<b>0350-0342</b>
18"	100/100	TR-4	<b>0350-0342</b>
18"	3.50/4.00	TR-4	<b>0350-0343</b>
18"	4.00/5.10	TR-4	<b>0350-0344</b>
18"	110/100	TR-4	<b>0350-0344</b>
18"	120/90	TR-4	<b>0350-0344</b>
19"	2.50	TR-4	<b>0350-0345</b>
19"	2.75/3.60	TR-4	<b>0350-0346</b>
19"	90/90	TR-4	<b>0350-0346</b>
19"	3.25/4.10	TR-4	<b>0350-0347</b>
19"	100/90	TR-4	<b>0350-0347</b>
19"	110/80	TR-4	<b>0350-0347</b>
19"	4.00/4.50	TR-4	<b>0350-0348</b>



### HEAVY-DUTY TUBES

- Wide range of sizes available for rim diameters from 10" through 21"
- Made of natural rubber which offers a very high tear strength
- 2,8-3 mm thick rubber provides extra protection against punctures and pinching
- Best suited for offroad use
- TR-4 valve stem

FITS RIM SIZE	FITS TIRE SIZE(S)	STEM TYPE	PART #
<b>STANDARD (CONT)</b>			
19"	110/90	TR-4	<b>0350-0348</b>
19"	120/80	TR-4	<b>0350-0348</b>
21"	2.50	TR-4	<b>0350-0349</b>
21"	2.75/3.00	TR-4	<b>0350-0350</b>
21"	90/90	TR-4	<b>0350-0350</b>
21"	80/100	TR-4	<b>0350-0350</b>
21"	90/100	TR-4	<b>0350-0350</b>
21"	100/80	TR-4	<b>0350-0350</b>
23"	2.75/3.00	TR-4	<b>0350-0351</b>
<b>HEAVY-DUTY</b>			
10"	2.50/2.75	TR-4	<b>0350-0352</b>
10"	60/100	TR-4	<b>0350-0353</b>
10"	80/100	TR-4	<b>0350-0354</b>
12"	60/100	TR-4	<b>0350-0355</b>
12"	80/100	TR-4	<b>0350-0356</b>
14"	2.25/2.50	TR-4	<b>0350-0357</b>
14"	60/100	TR-4	<b>0350-0357</b>
14"	90/100	TR-4	<b>0350-0358</b>
16"	90/100	TR-4	<b>0350-0359</b>
17"	4.00/5.10-	TR-4	<b>0350-0360</b>
17"	110/100	TR-4	<b>0350-0360</b>
17"	70/100	TR-4	<b>0350-0361</b>
18"	4.00/5.10-	TR-4	<b>0350-0362</b>
18"	110/100	TR-4	<b>0350-0362</b>
18"	3.25/4.10	TR-4	<b>0350-0363</b>
18"	100/100	TR-4	<b>0350-0363</b>
19"	100/90	TR-4	<b>0350-0364</b>
19"	110/90	TR-4	<b>0350-0365</b>
19"	120/90	TR-4	<b>0350-0365</b>
19"	70/100	TR-4	<b>0350-0366</b>
21"	2.75/3.00	TR-4	<b>0350-0367</b>
21"	80/100	TR-4	<b>0350-0367</b>
21"	90/90	TR-4	<b>0350-0367</b>
21"	90/100	TR-4	<b>0350-0367</b>
21"	100/80	TR-4	<b>0350-0367</b>



### ELITE 4-WAY HITCH W/ TOWING SHACKLE

- 51 mm (2") and 48 mm (1<sup>7</sup>/<sub>8</sub>") ball mounts
- Integrated towing shackle
- Clevis pin connector
- Durable powdercoated steel construction
- Three different mount positions

DESCRIPTION	PART #
Four-way hitch	4504-0225



### ELITE SERIES UNIVERSAL LICENSE PLATE BRACKET

- Universal mount
- Integrated LED light

DESCRIPTION	PART #
Elite Series universal license plate bracket	2030-2157



### ELITE SERIES CUBE LIGHT MOUNTS

- Custom clamp system included
- Mounts to left and/or right
- Custom angle adjustments
- Sold in pairs



DESCRIPTION	PART #
Elite Series cube light mounts	2001-2491



### HANDLEBAR RISER KIT

- Made from 6061-T6 billet aluminum
- Includes sizes 5-30 mm
- Includes all hardware and wrench

FITS MODEL	PART #
<b>BETA</b>	
RR 12-21	0602-0755
RS 14-21	0602-0755
Xtrainer 300 15-20	0602-0755
<b>HUSABERG</b>	
All models 09-14	0602-0755
<b>HUSQVARNA</b>	
85-501 14-15 (all)	0602-0755
TC 85 16-21	0602-0755
TC 250 16	0602-0755



FITS MODEL	PART #
<b>HUSQVARNA (CONT)</b>	
FE 250-501 16-20	0602-0755
TE 125-501 16-20	0602-0755
<b>KTM</b>	
50-530cc 00-15 (all)	0602-0755
SX 50/65/85 16-21	0602-0755
EXC 200-500 16-20	0602-0755
XCW 200-500 16-20	0602-0755
<b>SHERCO</b>	
All enduro models 13-15	0602-0755





## CONTOUR HANDGUARDS

- New clamps are included that feature a new angle for better cable/hose clearance, they are longer for more lever area, no holes for added strength, and full radiuses on the edges to eliminate sharp edges
- Made from top quality 6061-T6 aluminum
- Contoured to the shape of the handlebar for better fit
- Special U-shaped inner-clamps for more cable/control space
- More clamp sizes to more closely fit different brands of handlebars
- All mounting hardware is included; replacement hardware available; sold separately
- A perfect match to the Contour Deflectors
- Sold in pairs
- Available in black
- Fit both dirt bikes and ATVs



### DESCRIPTION

Standard 22 mm (7/8") handlebars steel/alum./alloy

### PART #

**0635-1492**

## CONTOUR DEFLECTORS

- Made with soft, flexible and resilient polyethylene
- Special mounting brackets clamp around aluminum guards easily and securely
- Mount these deflectors to your Contour handguards with no drilling
- No-drill design retains the strength of the aluminum handguard
- Custom colors stand out from the crowd
- Sold in pairs
- Available in black/black
- Fit snowmobiles, dirt bikes and ATVs



### DESCRIPTION

Contour deflectors

### PART #

**0635-0550**



0614-1146



0614-1385

## FORGED ALUMINUM OE-STYLE BRAKE AND CLUTCH LEVERS

- Great way to update from the OEM cast design levers
- Clutch and brake levers are forged from high quality 6061-T6 aluminum
- More resistant to breakage than conventional levers
- Exact replacement to the OEM design fitments

DESCRIPTION	CLUTCH BLACK	CLUTCH SILVER	BRAKE BLACK	BRAKE SILVER
<b>HUSQVARNA</b>				
TC65 17-21	<b>0614-1384</b>	-	<b>0614-1146</b>	<b>0614-1147</b>
TC85 14-21	<b>0613-1384</b>	<b>0613-1385</b>	<b>0614-1146</b>	<b>0614-1147</b>
<b>KTM</b>				
SX65 14-22	<b>0613-1384</b>	<b>0613-1385</b>	<b>0614-1146</b>	<b>0614-1147</b>
SX85 14-22	<b>0613-1384</b>	<b>0613-1385</b>	<b>0614-1146</b>	<b>0614-1147</b>
Freeride 250R 12-16	<b>0613-1385</b>	-	<b>0614-1146</b>	<b>0614-1147</b>
Freeride 250F/R 14-19	<b>0613-1384</b>	-	<b>0614-1146</b>	<b>0614-1147</b>
Freeride 350 12-16	<b>0613-1385</b>	-	<b>0614-1146</b>	<b>0614-1147</b>
Freeride 350 14-19	<b>0613-1384</b>	-	<b>0614-1146</b>	<b>0614-1147</b>



### LOCK-ON GRIP SYSTEM

- No more using glue, paint thinner or safety wire to keep your grips from twisting or slipping
- Moose Utility Division Lock-On grips provide slip-free performance right out of the box
- Revolutionary system survives the most severe weather
- Installation and removal is easy and will not destroy your grips
- Grips slide effortlessly on and off your bars and are locked into place with a few turns of a wrench
- Includes removable end plugs for added protection against "grip blowout"
- Compatible with the ODI Lock-on grip system
- Fits 22 mm (7/8") bars with thumb throttle; 120 mm in length



DESCRIPTION	PART #
Lock-on grip system	<b>0630-0979</b>



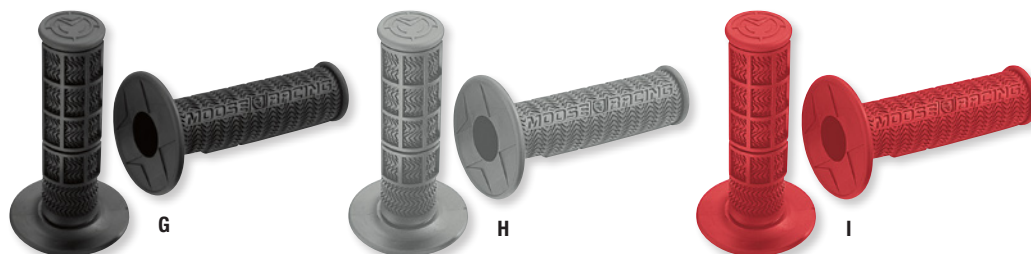
### 36 SERIES LOCK-ON GRIPS

- The lock-on grip system allows you to adjust or replace grips in seconds without the need of glue or wire to secure to handlebar
- The slim diameter profile improves overall grip on handlebar
- Provide slip-free performance under any conditions
- Simple installation and removal without waiting for glue to dry
- Snap-on throttle cams to match most modern 2- and 4-stroke applications
- Medium texture rubber compound
- Grips are 11,7 cm (4<sup>5</sup>/<sub>8</sub>") L and sold in pairs



DESCRIPTION	PART #
(A) Black/gold	<b>0630-2535</b>
(B) White/gold	<b>0630-2536</b>
(C) Blue/black	<b>0630-2537</b>

DESCRIPTION	PART #
(D) Orange/black	<b>0630-2538</b>
(E) Red/gold	<b>0630-2539</b>
(F) Gray/silver	<b>0630-2540</b>



### STEALTH GRIPS

- One compound, one pattern, one price in MX (twist throttle with flange)
- Special compound feels soft, but wears like a harder compound
- Half-waffle pattern with high-traction chevrons
- Safety wire grooves don't interfere with grip comfort
- Extra-thick end cap for increased strength
- Fit 22 mm (7/8") bars; 115 mm in length
- Available in black, gray, red, orange and blue
- Grip glue sold separately



DESCRIPTION	PART #
(G) Black	<b>0630-0390</b>
(H) Gray	<b>0630-0391</b>

DESCRIPTION	PART #
(I) Red	<b>0630-0392</b>
(J) Orange	<b>0630-0393</b>

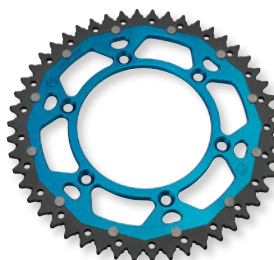
DESCRIPTION	PART #
(K) Blue	<b>0630-0394</b>



Black



Silver



Blue



Orange



Green

## DUAL SPROCKETS

- Designed to outlast standard aluminum rear sprockets and is much lighter than steel rear sprockets
- Inner ring is made from 7075-T6 aluminum and the outer ring is made from heavy-duty steel
- Self-cleaning mud grooves between each tooth to prevent dirt build-up
- Inner rings are anodized; available in black, silver, blue, red, orange and green

FITS MODEL	STANDARD GEARING	REAR SIZE	BLACK	SILVER	BLUE	RED	ORANGE	GREEN
<b>BETA</b>								
RR 250 05-12	14/52	48	1210-1508	-	1210-1824	-	-	-
RR 350 11-12	13/50	50	-	-	1210-1826	-	-	-
RR 400/450 05-12	13/50							
RR 498 12	13/48							
RR 520 10-14	13/18							
RR 500/525 05-11	14/50							
RR 300/350 13-18	13/49	49	-	-	-	1210-1541	-	-
RR/RS 390 15-18	13/49	50	-	-	-	1210-1542	-	-
<b>CCM</b>								
GP 450 13-15	-	50	-	-	1210-1829	-	-	-
		51	-	-	1210-1830	-	-	-
		52	-	-	1210-1831	-	-	-
<b>GAS GAS</b>								
125 01-11	-	48	1210-1508	-	-	-	-	-
EC/ECR 125 99-15	13/48	48	-	-	1210-1824	-	-	-
		50	-	-	1210-1826	-	-	-
200/250/300/450/515 97-12	-	48	1210-1508	-	-	-	-	-
EC/ECR200 99-15	13/48	48	-	-	1210-1824	-	-	-
EC/ECR/MC 250 97-15	13/48	50	-	-	1210-1826	-	-	-
EC/ECR/ECF/MC 300 00-15	13/48							
EC/SM 400-515 00-15	13/48							
MC/MC-F/EC/EX models 125/250/350/450 21	-	48	1210-1514	-	-	-	-	-
		50	-	-	1210-1829	-	-	-
		51	-	-	1210-1830	-	-	-
		52	-	-	1210-1831	-	-	-
<b>HUSABERG</b>								
TE 125/250/300 11-14	13/50	48	1210-1514	-	-	-	-	-
FE 250 13-14	14/50	49	-	-	-	-	1210-1519	-
FE350/390/450 09-13	13/52	50	1210-1520	1210-1521	1210-1829	-	1210-1522	-
FE501 13-14	14/52	51	-	-	1210-1830	-	-	-
FE570 09-12	13/52	52	-	1210-1527	1210-1831	-	1210-1528	-
<b>HUSQVARNA</b>								
TC85 14-17 (all)	14/47	48	1210-1815	-	-	-	-	-
		49	-	-	-	-	1210-1822	-
		50	1210-1817	-	-	-	-	-
2-strokes w/ 6-spline shaft 95-13	-	48	1210-1508	-	1210-1824	-	-	-
		50	-	-	1210-1826	-	-	-
4-Stroke w/ 12-spline shaft 95-13	-	48	1210-1508	-	1210-1824	-	-	-
		50	-	-	1210-1826	-	-	-
TC/TE 125 14-21	-	48	1210-1514	-	-	-	-	-
TC/TE 250 14-21		49	-	-	-	-	1210-1519	-
FC/FE 250 14-21		50	1210-1520	1210-1521	1210-1829	-	1210-1522	-
FC/FE 350 14-21		51	-	-	1210-1830	-	-	-
FC/FE 450 14-21		52	-	1210-1527	1210-1831	-	1210-1528	-
FE 501 14-15/16-21								
FS 450 16-18								
TE 300 14-21								

DUAL SPROCKETS continued on next page



## DUAL SPROCKETS (CONT)

FITS MODEL	STANDARD GEARING	REAR SIZE	BLACK	SILVER	BLUE	RED	ORANGE	GREEN
<b>KAWASAKI</b>								
KX125 82	13/51	49	-	-	-	-	-	1210-1493
KX125 83	13/50	50	-	-	-	-	-	1210-1495
KX125 85-89	12/47							
KX125 90-91	12/48							
KX125 92-95	12/49							
KX125 96-97	13/50							
KX125 98-99	12/48							
KX125 00-02	12/49							
KX125 03-05	13/51							
KDX200/220 89-06	13/47	49	-	-	-	-	-	1210-1493
KX250 85	14/50	50	-	-	-	-	-	1210-1495
KX250 87-89	14/47							
KX250 90-91	14/48							
KX250 92-97	14/49							
KX250 98	13/48							
KDX250 91-94	13/47							
KX250 99	13/48							
KX250 00	14/47							
KX250 01	14/48							
KX250 02-04	13/49							
KX250 05-07	13/51							
KX250F 04-10	13/48	49	-	-	-	-	-	1210-1493
KX250F 11-20 / KX 250 F /250X 21	13/50	50	-	-	-	-	-	1210-1495
KLX250/300 94-02	14/50	49	-	-	-	-	-	1210-1493
KLX250S 09-21	13/50	50	-	-	-	-	-	1210-1495
KLX250SF Motard 09-10	14/42							
KLX300R 03-07 / 20-21	14/50							
KX450F 06-18 / KX450 19-21/ KX450X 21	13/50	49	-	-	-	-	-	1210-1493
KLX450R 08-09 18-19	13/50	50	-	-	-	-	-	1210-1495
KX500 83	14/43	49	-	-	-	-	-	1210-1493
KX500 85	14/46	50	-	-	-	-	-	1210-1495
KX500 86	14/48							
KX500 87-04	14/47							
<b>KTM</b>								
4-strokes 90-97 (all)	-	48	1210-1514	-	-	-	-	-
		49	-	-	-	-	1210-1519	-
		50	1210-1520	1210-1521	1210-1829	-	1210-1522	-
		51	-	-	1210-1830	-	-	-
		52	-	1210-1527	1210-1831	-	1210-1528	-
85 SX/XC 03-18	14/46	48	1210-1815	-	-	-	-	
105 SX 04-13	14/49	49	-	-	-	-	1210-1822	-
		50	1210-1817	-	-	-	-	-
SX/SX-F/EXC/XC/XC-W 125/144/150/200/250/ 300/350/360/380//400/450/525/530 90-21	-	48	1210-1514	-	-	-	-	-
		49	-	-	-	-	1210-1519	-
		50	1210-1520	1210-1521	1210-1829	-	1210-1522	-
		51	-	-	1210-1830	-	-	-
		52	-	1210-1527	1210-1831	-	1210-1528	-
SXF 250 05-21	13/48	48	1210-1514	-	-	-	-	
EXC 250 4-stroke 03-06	14/52	49	-	-	-	-	1210-1519	-
		50	1210-1520	1210-1521	1210-1829	-	1210-1522	-
		51	-	-	1210-1830	-	-	-
		52	-	1210-1527	1210-1831	-	1210-1528	-
RXC 400 LC4 93-02	14/50	48	1210-1514	-	-	-	-	-
		49	-	-	-	-	1210-1519	-
		50	1210-1520	1210-1521	1210-1829	-	1210-1522	-
		51	-	-	1210-1830	-	-	-
		52	-	1210-1527	1210-1831	-	1210-1528	-
SX/EXC 400 99-02	14/50	48	1210-1514	-	-	-	-	
XC-W 400 09-10	-	49	-	-	-	-	1210-1519	
EXC/MXC 440 94-95	-	50	1210-1520	1210-1521	1210-1829	-	1210-1522	
SX-F/XC-F 450 03-21	14/52	51	-	-	1210-1830	-	-	
EXC/XC-W 450 03-21	-	52	-	1210-1527	1210-1831	-	1210-1528	
EXC-R 450 08-12	-							
MXC/XC 450 03-06	-							
XCR-W 450 08-09	-							

DUAL SPROCKETS continued on next page



## DUAL SPROCKETS (CONT)

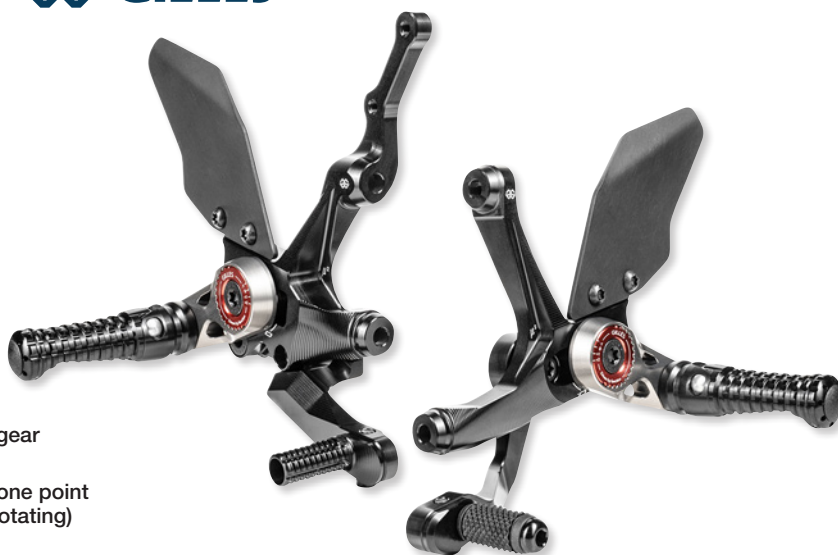
FITS MODEL	STANDARD GEARING	REAR SIZE	BLACK	SILVER	BLUE	RED	ORANGE	GREEN
<b>KTM (CONT)</b>								
SX 500 92	-	48	1210-1514	-	-	-	-	-
SXF/XCF 505 07-12	14/52	49	-	-	-	-	1210-1519	-
SX/EXC 520 99-02	14/50	50	1210-1520	1210-1521	1210-1829	-	1210-1522	-
SX/EXC/MXC/SMC 525 03-07	14/48	51	-	-	1210-1830	-	-	-
EXC-R 530 08-11	15/45	52	-	1210-1527	1210-1831	-	1210-1528	-
XCR-W 530 08-11	14/50							
DXC/MXC 550 92-97	-							
600 LC4 90-93	-	48	1210-1514	-	-	-	-	-
620 LC4/Duke/MX 94-99		49	-	-	-	-	1210-1519	-
625 LC4/SXC/SMC 02-06		50	1210-1520	1210-1521	1210-1829	-	1210-1522	-
640 LC4 99-07		51	-	-	1210-1830	-	-	-
660 SMC 03-06		52	-	1210-1527	1210-1831	-	1210-1528	-
690 SM/SMC 07-12								
<b>SHERCO</b>								
All Enduro models 13-15	-	48	-	-	1210-1824	-	-	-
SE 450/510 06-11		50	-	-	1210-1826	-	-	-
<b>SUZUKI</b>								
DR250S 90-92	13/49	48	1210-1508	-	1210-1824	-	-	-
DR250S 93-95	14/42	50	-	-	1210-1826	-	-	-
RM250 81	14/50	49	-	-	-	-	-	1210-1493
RM250 82	14/49	50	-	-	-	-	-	1210-1495
RM250 83	14/50							
RM250 87-88	14/50							
RM250 89-98	13/49							
RM250 99-00	13/48							
RM250 01-08	13/50							
RMX250 89-98	13/50							
RMZ250 04-06	13/48							
DR350S 90-93	14/43	48	1210-1508	-	1210-1824	-	-	-
DR250S 94-95	15/41	50	-	-	1210-1826	-	-	-
<b>YAMAHA</b>								
YZ125 99-21 / YZ125X 20-21	13/48	48	1210-1475	-	1210-1477	-	-	-
		49	1210-1478	1210-1479	-	-	-	-
		50	1210-1481	-	-	-	-	-
TTR230 05-21	13/49	48	1210-1475	-	1210-1477	-	-	-
IT250 81-83	13/48-50	49	1210-1478	1210-1479	-	-	-	-
		50	1210-1481	-	-	-	-	-
YZ250 01-21	14/50	48	1210-1475	-	1210-1477	-	-	-
YZ250X 16-21		49	1210-1478	1210-1479	-	-	-	-
		50	1210-1481	-	-	-	-	-
YZ250F 01-06	13/48	48	1210-1475	-	1210-1477	-	-	-
YZ250F 07-21	13/50	49	1210-1478	1210-1479	-	-	-	-
WR250F 01-06	13/52	50	1210-1481	-	-	-	-	-
WR250F 07-18	13/50							
YZ250FX 16-21								
WR250F 07-21								
YZ/WR400/426F 99-02	14/49	48	1210-1475	-	1210-1477	-	-	-
		49	1210-1478	1210-1479	-	-	-	-
		50	1210-1481	-	-	-	-	-
YZ450F 03-04	14/48	48	1210-1475	-	1210-1477	-	-	-
YZ450F 05	14/51	49	1210-1478	1210-1479	-	-	-	-
YZ450F 06-10	13/49	50	1210-1481	-	-	-	-	-
YZ450F 11-13	13/48							
YZ450F 14-21	13/50							
WR450F 03-06	13/49							
WR450F 07-21	13/50							
YZ450FX 16-21								



## REARSET MUE2

### FOR DUCATI STREETFIGHTER V2 955 ABS 22-23

- Black anodized with contrast adjusters, it is also an optical highlight on every bike
- The position of the footrests as well as the brake and gear levers can be adjusted according to personal needs
- A combination of a push and rotatable setting at only one point (five positions through pushing and four positions by rotating)
- The conversion to GP shifting style works through the simple swapping of the gear arm
- Brake and shift levers come with double ball bearings for function of the levers and adjustable toe pieces as well
- The rearset is equipped with foldable footpegs



#### DESCRIPTION

MUE2

#### PART #

1623-0586

## REARSET FACTOR-X

### FOR APRILIA RS 660 ABS 21-23

- Perfect balance of lightweight construction and stress resistance
- Maximum performance and minimum weight
- Pure sportiness in aesthetic design
- Includes aluminum heel guards left and right
- Two piece construction of the mounting plate (no need to remove the swing axle when changing spare parts)
- Side stand can be removed



#### DESCRIPTION

Factor-X

#### PART #

1623-0585



## SHIFTHOLDER KIT

### FOR APRILIA RS 660 21-23

- Bends elastically when shifting hard or quick
- Stabilizes the gear shaft and eliminates vague shifting
- High tech synthetic material bushing/brass-bushing is used
- Hard anodized titanium color

#### DESCRIPTION

Anodized titanium

#### PART #

1602-1482



## PASSENGER FOOTPEG COVER KIT

### FOR APRILIA RS660 21-23

- Cover for holders of the passenger pegs
- The original screws will be used for mounting
- The corresponding open mounting points can be concealed cleanly and attractively

#### DESCRIPTION

Black

#### PART #

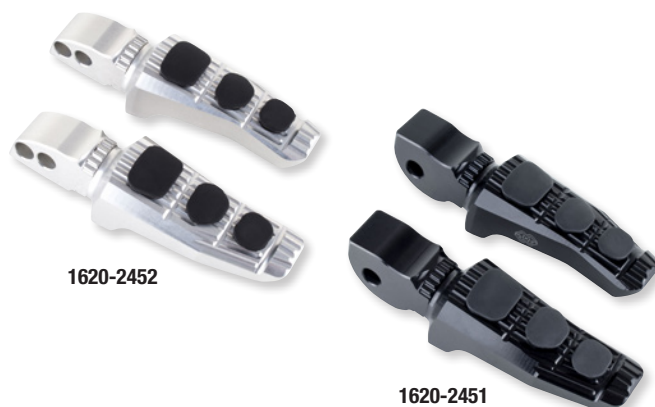
1620-2447



## PASSENGER FOOTPEGS

- Cover for holders of the passenger pegs
- The original screws will be used for mounting
- The corresponding open mounting points can be concealed cleanly and are visually attractive
- Replacement touring footrests for the driver's position can be quickly and easily mounted on the original mounting points of the motorcycle
- Set of two notches (including rubber inserts) and two folding joints
- Special wider shape 80 mm long
- Catch can also be used without the rubber inserts
- Optional outriggers, with the driver's replacement footrests can be adjusted to 360 degrees (divided into 24 individual positions) by 20 mm

FITS MODEL	DESCRIPTION	PART #
<b>APRILIA</b>		
RS660 21-23	Silver	<b>1620-2452</b>
RS660 21-23	Black	<b>1620-2451</b>
<b>DUCATI</b>		
Sport footpeg V2 22	Silver	<b>1620-2448</b>



FITS MODEL	DESCRIPTION	PART #
<b>DUCATI (CONT)</b>		
Touring footpeg V2 22	Black	<b>1620-2449</b>
Touring footpeg V4/S/R 18-22	Silver	<b>1620-2450</b>

## CLUTCH AND BRAKE LEVER GUARDS FOR DUCATI STREETFIGHTER V2 22-23

- Designed to protect the brake and clutch levers from impact
- Suitable for street bike use
- Two-part design structure of the lever, with arm made of durable POM
- Clamping elements for the steering tube and the black hard-anodized aluminum bracket have been revised from the original Gilles Moto GP Style Lever Guards
- The POM arm now appears in the new "Round Design" and impresses with increased stability
- Thanks to the new construction, the holder can now be adjusted or rotated, which ensures an individually selectable position and improves comfort
- New clamping element provides even more support in the steering tube

DESCRIPTION	BRAKE #	CLUTCH #
Black	<b>0615-0380</b>	<b>0615-0381</b>



## FUEL CAP

FITS APRILIA RS 660 ABS 21-22/TUONO 660 ABS 21-23

- Completely milled from aluminum and hard-anodized
- Low weight
- Leak tightness
- Keyless opening and closing of the screw-on cap

DESCRIPTION	PART #
Black	<b>0703-0898</b>



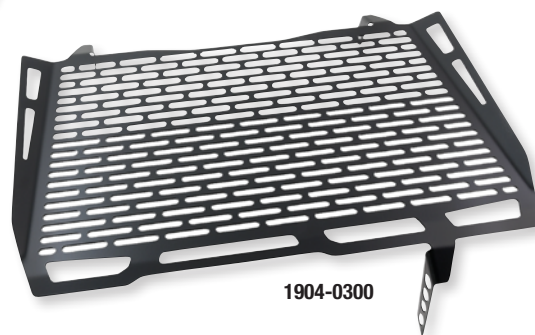
## RACE COVER KIT FOR APRILIA RS 660 ABS 21-23

- Racing covers designed to protect open mounting points against dirt and moisture

DESCRIPTION	PART #
Black	<b>0504-0426</b>



1904-0302



1904-0300

## RADIATOR GUARDS

- Helps protect critical components from damage
- Tough black stainless steel construction
- Simple to install and fits perfectly - with no modifications required
- See page 334 of the 2022 Parts Europe Street catalog for additional Zieger radiator guards

FITS MODEL	PART #
<b>APRILIA</b>	
Tuareg 660 22	1904-0302
<b>DUCATI</b>	
Multistrada 950 15-21	1904-0300

FITS MODEL	PART #
<b>DUCATI (CONT)</b>	
Multistrada 1200 15-17	1904-0300
<b>YAMAHA</b>	
MT-09 17-20	1904-0301

## INDY SPACERS

- Spacers reduce the size of the holes of fairing which enables the rider to install the accessory indicators
- Black powdercoated finish
- Sold in 4-pack



0504-0397



0504-0425



0504-0422

FITS MODEL	THREAD SIZE: M10	THREAD SIZE: M8	THREAD SIZE: M6
<b>BMW</b>			
S 1000 RR 09-21	0504-0400	-	-
S 1000 XR 15-21	0504-0400	-	-
<b>DUCATI</b>			
Monster 821 14-16	0504-0398	-	-
Monster 1200 14-20	0504-0398	-	-
<b>HONDA</b>			
CBR 125 R 13-16	0504-0397	0504-0416	0504-0417
CBR 250 R 13-16	0504-0397	0504-0416	0504-0417
CBR 500 R 16-21	0504-0397	0504-0416	0504-0417
CBR 600 F 13	0504-0397	0504-0416	0504-0417
CBR 600RR 13-17	0504-0397	0504-0416	0504-0417
CB 650 F 17-18	0504-0397	0504-0416	0504-0417
CBR 650 F 14-18	0504-0397	0504-0416	0504-0417
CBR 650 R 19-22	0504-0397	0504-0416	0504-0417
VT 750 Shadow	-	-	0504-0413
CBR1000RR/Fireblade 13-19	0504-0397	0504-0416	0504-0417
CBR 1000 RR-R Fireblade 20-21	0504-0397	0504-0416	0504-0417
VT 1100 Shadow	-	-	0504-0413
<b>KAWASAKI</b>			
Versys X 250	0504-0395	0504-0420	0504-0421
Versys X 300	0504-0395	0504-0420	0504-0421
ER6-nf	0504-0395	0504-0420	0504-0421
ZX-6R 636	0504-0395	0504-0420	0504-0421
Z650 17-21	0504-0395	0504-0420	0504-0421
Z800	0504-0395	0504-0420	0504-0421

FITS MODEL	THREAD SIZE: M10	THREAD SIZE: M8	THREAD SIZE: M6
<b>KAWASAKI (CONT)</b>			
Z900 17-21	0504-0395	0504-0420	0504-0421
Z1000	0504-0395	0504-0420	0504-0421
<b>KTM</b>			
125 Duke 12-22	-	0504-0424	0504-0425
200 Duke 12-15	-	0504-0424	0504-0425
390 Duke 12-22	-	0504-0424	0504-0425
1290 Super Duke 16	-	0504-0424	0504-0425
<b>SUZUKI</b>			
GSX-R 125 17-21	0504-0401	0504-0409	0504-0410
GSX-S 750 17-20	0504-0402	-	-
GSX-S 750 17-21	-	0504-0407	0504-0408
GSX-R 1000 17-20	0504-0402	-	-
GSX-R 1000 17-21	-	0504-0407	0504-0408
GSX-S 1000 15-20	0504-0396	0504-0411	0504-0412
<b>TRIUMPH</b>			
Bonneville T100 02-06	0504-0399	0504-0414	0504-0415
Daytona 675/R 15-17	0540-0400	0504-0418	0504-0419
Street Triple 765 17-20	0540-0400	0504-0418	0504-0419
<b>YAMAHA</b>			
YZF-R3 19-21	0504-0403	0504-0405	0504-0406
YZF-R6 03-21	0504-0403	0504-0405	0504-0406
MT-07 13-20	0504-0404	0504-0422	0504-0423
MT-09 13-20	0504-0404	0504-0422	0504-0423
FZ1 Fazer 06-14	0504-0403	0504-0405	0504-0406
MT-10 16-20	0504-0404	0504-0422	0504-0423





### TURN SIGNAL BRACKETS

#### FOR TRIUMPH SCRAMBLER 1200 XC 18-21

- Black powdercoated
- Made for Zieger license plate holders for brand-specific turn signals
- Sold in pairs
- See page 871 of the 2022 Parts Europe Street catalog for additional Zieger turn signal brackets

DESCRIPTION	PART #
Turn signal brackets	2040-3009



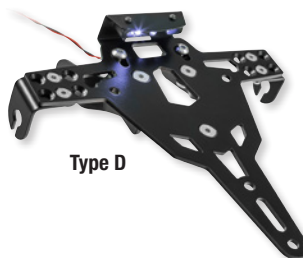
### TURN SIGNAL HOLDER

- Bracket for the rear turn signals
- Black powdercoated stainless steel
- Hole diameter: 11 mm (slotted)
- Measures 175 mm L x 25 mm W x 18 mm H

DESCRIPTION	PART #
Turn signal holder	2040-3010

### LICENSE PLATE HOLDERS

- Black powdercoated metal construction
- No bike body modifications required
- The angle of inclination is fully adjustable
- Turn signal holders are adjustable in 3 positions
- The screw heads are also countersunk to ensure that the license plate is flat
- ECE approved
- See pages 421-422 of the 2022 Parts Europe Street catalog for the complete line of Zieger license plate holders



FITS MODEL	TYPE A	TYPE B	TYPE C	TYPE D	TYPE E
<b>APRILIA</b>					
Tuareg 660 21-22	2030-2267	2030-2268	-	2030-2270	2030-2269
<b>YAMAHA</b>					
YZF-R7 21-22	2030-2263	2030-2264	-	2030-2266	2030-2265
MT-10 22-23	2030-2271	2030-2273	-	2030-2272	2030-2274

### LICENSE PLATE HOLDER TYPES WILL FIT LICENSE PLATES FROM THE FOLLOWING COUNTRIES

TYPE A	TYPE B	TYPE C	TYPE D	TYPE E
GERMANY	AUSTRIA	SWITZERLAND	FRANCE	ITALY
SLOVENIA	CZECH REPUBLIC	POLAND	-	-
CROATIA	NETHERLANDS	IRELAND	-	-
UK	BELGIUM	-	-	-
-	GREECE	-	-	-
-	SPAIN	-	-	-



### T-PIECES

- Retaining plate for reflectors for mounting in the license plate holder
- Aluminum black powdercoated finish
- Type 4 (PART #2030-2262) suitable for reflector measuring 100 mm L x 13 mm W
- All hardware included
- Sold each

DESCRIPTION	PART #	DESCRIPTION	PART #
Large version	2030-2261	Type 4 for reflector	2030-2262

### E4 REFLECTOR BRACKETS FOR LICENSE PLATE HOLDERS

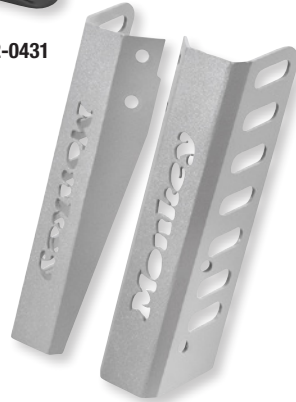
- Reflectors can be taken from the original
- Black finish
- Sold in pairs (without reflectors)



DESCRIPTION	PART #
For indicators with M8 thread	2040-3006
For indicators with M10 thread	2040-3007
For no indicators (universal)	2040-3008



1402-0431



**FRONT FENDER STREET AND FORK GUARDS**

**FOR HONDA MONKEY 125 19-23**

- Set includes a front fender and two fork guards for stable structure during travel
- Fender made of ABS plastic in glossy black color
- Comes with UV protection
- Fork guards crafted from 3 mm thick aluminum and painted with electrostatic paint in black or silver
- Auxiliary components made from 2 mm sheet metal and painted with black electrostatic paint
- Easy installation

**FRONT FENDER**

**FOR HONDA MONKEY 125 19-23**

- Made of ABS plastic with UV protection
- Easy installation
- Comes in glossy black with a nickel finish

DESCRIPTION	PART #
Fender w/ silver fork guards	<b>1402-0431</b>

DESCRIPTION	PART #
Fender w/ black fork guards	<b>1402-0432</b>

DESCRIPTION	PART #
Front Fender Scrambler	<b>1402-0433</b>

**CAFE RACER HEADLIGHT MASK**

**FOR HONDA MONKEY 125 19-23**

- Crafted from ABS plastic in black
- Metal base made of aluminum and gelatins in gray and yellow colors



2001-2628



2001-2629

DESCRIPTION	PART #
Gray	<b>2001-2628</b>

DESCRIPTION	PART #
Yellow	<b>2001-2629</b>



**HEADLIGHT GRILLE**

**FOR HONDA MONKEY 125 19-23**

- Made of 2 mm thick iron with black electrostatic paint and plexiglass
- Comes with three different colors of plexiglass

DESCRIPTION	PART #
Grille	<b>2001-2608</b>

**HEADLIGHT MASK**

**FOR HONDA MONKEY 125 19-23**

- Made of 2 mm DKP metal and ABS plastic in glossy black color
- Crafted with UV protection
- Easy to adjust



DESCRIPTION	PART #
Mask	<b>2001-2607</b>



C-RACER

0506-1935



**ENGINE GUARD**

**FOR HONDA MONKEY 125 19-23**

- Guards exhaust from scratches or other damage on the road
- Covers entire surface, but has holes to allow air to pass through easily
- Made of 3 mm thick aluminum
- Comes in black and silver
- Protects for ride in style

0506-1936



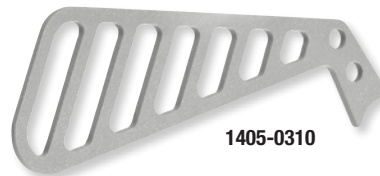
COLOR	PART #	COLOR	PART #
Silver	0506-1935	Black	0506-1936

**TUBE GUARD**

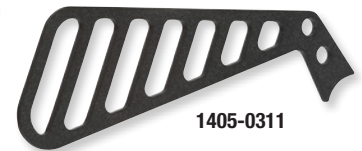
**FOR HONDA MONKEY 125 19-23**

- Guard protects front brakes from touching the wheels of the Honda Monkey 125
- Created from 3 mm thick aluminum
- Comes in black or silver

1405-0310



1405-0311

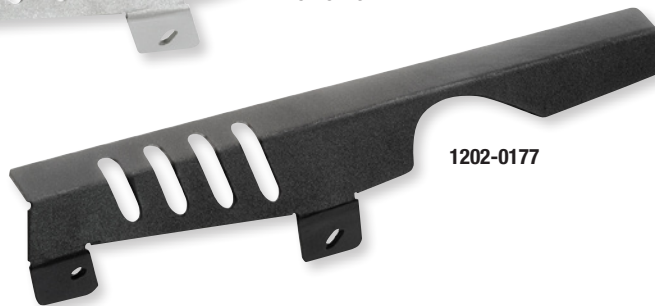


COLOR	PART #	COLOR	PART #
Silver	1405-0310	Black	1405-0311

1202-0176



1202-0177



**CHAIN GUARD**

**FOR HONDA MONKEY 125 19-23**

- Crafted on 3 mm thick aluminum painted with electrostatic paint
- Comes in black or silver color

COLOR	PART #	COLOR	PART #
Silver	1202-0176	Black	1202-0177

**LICENSE PLATE HOLDER**

**FOR HONDA MONKEY 125 19-23**

- Made out of 2 mm thick iron
- Adjustable, includes extra pieces to fit on the motorcycle without issue and rotates to hide under the tail

DESCRIPTION	PART #
License plate holder	2030-2260



IGNITION PARTS

### IRIDIUM IX SPARK PLUG

- The ultimate in the evolution of spark plug technology and performance from the industry leader
- The iridium electrode is 25% smaller than a platinum electrode and it's just ¼ the size of a conventional nickel electrode
- Ultra-small-diameter center electrode reduces voltage requirement and extends ignition system life
- Metal shell plating has enhanced anti-corrosion qualities



PART #	NGK PLUG #	THREAD	REACH
2103-0553	LZMAR8BI-10	14 mm	26,5 mm (1,04")



IGNITION PARTS

### SPARK PLUG CAPS

- Designed to reduce electromagnetic interference and radio frequency interference
- Highly durable phenolic resin and EPDM rubber
- Ceramic resistors ensure optimum performance and reliability
- Built to withstand extreme heat and vibration
- Prevents flashover
- Ensures optimal service life and performance



2104-0374



2104-0380



2104-0386

THREAD	NGK #	PART #
14 mm	SB05E	2104-0373
14 mm	LB05E	2104-0374
10 mm/12 mm	LD05F	2104-0375
10 mm/12 mm	YD05F	2104-0376
10 mm/12 mm	SD05FM	2104-0377
14 mm	LB01E	2104-0378

THREAD	NGK #	PART #
10 mm/12 mm/14 mm	XZ01F	2104-0379
14 mm	SB05F	2104-0380
14 mm	LB05F	2104-0381
14 mm	VB05F	2104-0382
10 mm/12 mm	SD05F	2104-0383
13 mm	L05EL	2104-0384

THREAD	NGK #	PART #
9 mm	VF05EMK	2104-0385
10 mm/12 mm	VD05EMH	2104-0386
16 mm	VF05EGAK	2104-0387
14 mm	SB10E	2104-0388



### BATTERY CLAMP GREASE

- Made for battery terminals and connections along with plug connectors in vehicle electronics
- Ensures reliable starting and long battery life
- Offers high corrosion protection and prevents leakage currents
- Prevents the contact resistance from increasing during operation and ensures lower loss than with untreated contacts



PART #  
3607-0056



### COPPER PASTE

- Release agent and lubricant made from ultra-fine copper particles for use with machine elements subject to high thermal stress
- Makes dismantling easy after long running times, especially in threaded connections to exhaust manifolds, mufflers, and chassis parts
- Apply to clean surfaces using a paint brush or lint-free cloth



DESCRIPTION  
100g

PART #  
3607-0055