



AIRBOX COVER



POWERFLOW KIT WITH BIO FACTORY PRE-OILED AIR FILTER



ICEFLOW COOLANT



RADIATOR SLEEVES



FUEL FILTER



HI-TACK FOAM FILTER OIL



THE CHOICE OF CHAMPIONS

2020 Catalog

Katalog | Catalogue | Catálogo | Catalogo



**PARTS
EUROPE**
WWW.PARTSEUROPE.EU

The Choice of Champions

MX1/MXGP

JOËL ROBERT • HAKAN ANDERSSON • GUENNADY MOISSEEV • HARRIE EVERTS • HEIKKI MIKKOLA
GEORGE JOBÉ • HEINZ KINIGARDNER • ERIC GEBOERS • JEAN MICHEL BAYLE • ALESSANDRO PUZAR
DONNY SCHMIT • GREG ALBERTYN • STEFAN EVERTS • SEBASTIEN TORTELLI • FREDERIC BOLLEY
JEFFREY HERLINGS • MICKAËL PICHON • STEVE RAMON • TIM GAJSER

MX2

ANDRÉ MALHERBE • GASTON RAHIER • AKIRA WATANABE • HARRIE EVERTS
ERIC GEBOERS • MICHELLE RINALDI • PEKKA VEHKONEN • DAVE STRIJBOS • JEAN MICHEL BAYLE
TRAMPAS PARKER • DONNY SCHMIT • STEFAN EVERTS • BOB MOORE • GREG ALBERTYN
PEDRO TRAGTER • ALESSANDRO PUZAR • SEBASTIEN TORTELLI • ALESSIO CHIODI
GRANT LANGSTON • JAMES DOBB • MICKAEL MASCHIO • STEVE RAMON • BEN TOWNLEY
ANTONIO CAIROLI • TYLA RATTRAY • MARVIN MUSQUIN • KEN ROCZEN
JEFFREY HERLINGS • JORDI TIXLER • TIM GAJSER • PAULS JONASS

MX3

ROGER DECOSTER • HEIKKI MIKKOLA • ANDRÉ MALHERBE • BRAD LACKEY
DAVID THORPE • GEORGE JOBÉ • ERIC GEBOERS • JACKY MARTENS • MARCUS HANSSON
SHAYNE KING • ANDRE ABARTOLINI • STEFAN EVERTS • PIERRE RENET
CARLOS CAMPANO • JULIEN BILL • KLEMEN GERCAR

MX WOMEN

COURTNEY DUNCAN • STEPHANIE LAIER • KATHERINE PRUMM • LIVIA LANCELOT

AMA SUPERCROSS

COOPER WEBB • RICK JOHNSON • JEFF STANTON • JEAN MICHEL BAYLE
JASON ANDERSON • JEREMY MCGRATH • RICKY CARMICHAEL • RYAN DUNGEY

AMA SUPERCROSS EAST

EDDIE WARREN • KEITH TURPIN • RONNIE TICHENOR • BRIAN SWINK • TODD DEHOOP
DENNY STEPHENSON • DOUG HENRY • EZRA LUSK • MICKAEL PICHON • TIMMY FERRY
RICKY CARMICHAEL • ERNESTO FONSECA • STEPHANE RONCADA • TRAVIS PASTRANA
CHAD REED • BRANDON JESSEMAN • GRANT LANGSTON • DAVI MILLSAPS • BEN TOWNLEY
TREY CANARD • WIL HAHN • CHRISTOPHE POURCEL • JUSTIN BARCIA • JUSTIN BOGLE
CHASE SEXTON • MARVIN MUSQUIN • MALCOLM STEWART • ZACH OSBORNE

AMA SUPERCROSS WEST

WILLIE SURRATT • TY DAVIS • JEREMY MCGRATH • JIMMY GADDIS • DAMON HUFFMAN
NATHAN RAMSEY • SHAE BENTLEY • ERNESTO FONSECA • TRAVIS PRESTON • IVAN TEDESCO
GRANT LANGSTON • RYAN VILLOPOTO • RYAN DUNGEY • JAKE WEIMER • BROCK TICKLE
AARON PLESSINGER • DYLAN FERRANDIS • ELI TOMAC • KEN ROCZEN • COOPER WEBB • JUSTIN HILL

AMA MOTOCROSS 250/450


DARRELL SCHULTZ • DONNIE HANSEN • DAVID BAILEY • RICK JOHNSON • JEFF STANTON
JEAN-MICHEL BAYLE • JEREMY MCGRATH • GREG ALBERTYN • RICKY CARMICHAEL
CHAD REED • RYAN DUNGEY • KEN ROCZEN

AMA MOTOCROSS 125/250

MARK BARNETT • JOHNNY O'MARA • RON LECHIEN • MICKY DYMOND
GEORGE HOLLAND • MIKE KIEDROWSKI • GUY COOPER • DOUG HENRY • STEVE LAMSON
RICKY CARMICHAEL • TRAVIS PASTRANA • MIKE BROWN • GRANT LANGSTON • IVAN TEDESCO
AARON PLESSINGER • RYAN VILLOPOTO • RYAN DUNGEY • TREY CANARD • DEAN WILSON
ADAM CIANCIARULO • BLAKE BAGGETT • ELI TOMAC • COOPER WEBB • ZACH OSBORNE



IN SOME RESPECTS, MOTOCROSS WAS BORN IN THE NETHERLANDS.

 It was here, in 1947, that the Dutch national motorcycle federation hosted an international "scramble" for teams from Great Britain, Belgium and the Netherlands, and called it a "moto-cross."

While the sport's popularity grew steadily over the next 25 years, one thing that remained constant was the frustration of off-road biking in the Netherlands. The lowland dunes and fields offered the perfect terrain for riding, but the stock paper air filters of the day were no match for the sandy, gritty soil. There was a paper filter with a single layer of foam, but even that didn't cut it for protection; after 30 minutes it was shot. In 1972, the motocross world was given a historic boost by a revolutionary product: a laminated, dual-foam air filter that, when soaked in a special oil, allowed free airflow into the carburetor while keeping dirt, grime, sand and water out of it. It was effective, durable, washable and reusable. It took off, and the little start-up company that invented it, called Twin Air, hasn't stopped ever since.

Evolving continually with motorcycle design and technology, Twin Air filters and accessories have stayed ahead of the competition for half a century. Today they are available for all Motocross and ATV vehicles, and distributed worldwide. Twin Air filters are OEM-specified for 20+ motorcycle companies, and the official air filter of American Honda and Suzuki, Kawasaki Racing Team, Suzuki Geboers, Honda Martin and Honda CAS, KTM Red Bull, and many other teams. It remains the choice of more World & National Champions than all other filters combined.


 **In gewisser Weise hat Motocross seinen Ursprung in den Niederlanden.** Dort veranstaltete die niederländische National Motorcycle Federation im Jahr 1947 ein internationales „Scramble“ für Teams aus Großbritannien, Belgien und den Niederlanden und nannte dieses Rennen „Motocross“. Während dieser Sport über die nächsten 25 Jahre immer populärer wurde, blieb in den Niederlanden jedoch ein Wermutstropfen beim Motocross. Die niedrigen Dünen und flachen Felder waren perfekt zum Fahren, aber die normalen Papierfilter von damals waren nicht wirklich für den sandigen und kiesigen Boden geeignet. Es gab sogar einen Papierfilter mit einer einzelnen Schaumstoffschicht, aber selbst das reichte nicht aus; nach 30 Minuten war er hinüber.

Im Jahr 1972 sorgte ein revolutionäres Produkt dann für einen entscheidenden Einschnitt in der Motocrosswelt: ein laminiertes, zweischichtiges Schaumstofffilter, der mit speziellem Öl getränkt werden konnte und so eine ungehinderte Luftzufuhr in den Vergaser ermöglichte und gleichzeitig Schmutz, Staub, Sand und Wasser herausfilterte. Effektiv, langlebig, waschbar und wiederverwendbar. Dieser Filter wurde zum Erfolg und das kleine Start-Up-Unternehmen namens Twin Air hat ihn seitdem immer weiterentwickelt.

Durch die ständige Weiterentwicklung im Hinblick auf Motorrad-Design und -Technologie gehören die Twin Air Luftfilter und Zubehörteile jetzt schon ein halbes Jahrhundert lang zu den Marktführern.


Heute sind sie für alle Motocross-Motorräder und ATVs erhältlich und werden weltweit vertrieben.

Twin Air Luftfilter gibt es OEM-spezifisch für mehr als 20 Motorradmarken und sie sind standardmäßig an den Motorrädern der Teams American Honda, Suzuki, Kawasaki Racing Team, Suzuki Geboers, Honda Martin und Honda CAS, KTM Red Bull, und vielen weiteren verbaut. Diese Filter sind immer noch die beliebtesten der meisten Weltmeister und Nationalchampions.

 **Dans certains aspects, le motocross est né aux Pays-Bas.** C'est en 1947 que la fédération nationale néerlandaise a organisé une course de moto internationale pour des équipes en provenance de Grande-Bretagne, Belgique et Pays-Bas et l'ont baptisée « motocross ». Pendant les 25 dernières années, sa popularité n'a cessé de croître mais un point de frustration persiste toujours : la pratique du off-road aux Pays-Bas. Les champs et les dunes forment un terrain parfait mais les filtres à air d'origine en papier ne convenaient pas aux sols sableux et poussiéreux. Il y avait un filtre en papier qui disposait d'une couche de mousse mais même celui-là ne tenait pas plus de 30 minutes.

En 1972, le monde du motocross a été chamboulé par un produit révolutionnaire : un filtre à air laminé avec deux épaisseurs de mousse qui, lorsque trempé dans une huile spéciale, permettait un flux d'air libre dans le carburateur tout en empêchant à la boue, saleté, sable et eau d'entrer. C'était efficace, résistant, lavable et réutilisable. Sa popularité s'est rapidement répandue et l'entreprise qui en est à la base, Twin Air, n'a plus arrêté depuis.

Toujours en accord avec l'évolution des motos et des technologies, les filtres Twin Air et leurs accessoires sont devant leurs concurrents depuis un demi-siècle. De nos jours, ils sont disponibles pour tous les véhicules de motocross et les quads, et ce, dans le monde entier. Les filtres à air Twin Air sont OEM chez plus de 20 producteurs de motos et sont le filtre à air officiel pour American Honda et American Suzuki, Kawasaki Racing Team, Suzuki Geboers, Honda Martin et Honda CAS, KTM Red Bull et bien d'autres encore. Avec plus de filtres que toutes les autres marques combinées, ça reste le filtre le plus utilisé lors des championnats nationaux et internationaux.


 **En cierto modo el motocross nació en los Países Bajos.** Fue aquí en 1947 donde la Federación Nacional Neerlandesa de Motociclismo albergó una concentración internacional para equipos de Reino Unido, Bélgica y Países Bajos y lo llamaron *motocross*. A pesar de la popularidad de la que disfrutaría este deporte de motor durante los próximos 25 años, había un problema que seguía siendo fuente de frustración para la práctica del offroad en los Países Bajos. Pese a que los campos y dunas suaves de este país ofrecían un escenario ideal para pilotar por ellos, los filtros de aire de papel de serie de entonces no podían hacer frente a su barro áspero y arenoso. Llegó a producirse un filtro de papel con una única capa de espuma, pero incluso este filtro no lograba hacerle frente: tras 30 minutos fin de la partida.

Sin embargo, en 1972 el mundo del motocross recibió un impulso histórico gracias a un producto

revolucionario: un filtro de aire con doble capa de espuma laminada que empapada en un aceite especial permitía una entrada limpia de aire al carburador a la vez que evitaba la entrada de suciedad, barro, arena y agua. Era efectivo, duradero, lavable e incluso reutilizable. Recibió una gran acogida y la pequeña empresa emergente que lo inventó, llamada Twin Air, no ha echado el freno desde entonces.

Evolucionando y adaptándose a las nuevas tecnologías y diseños de los nuevos modelos, los filtros y accesorios Twin Air han logrado permanecer un paso por delante en el mundo de la competición durante casi medio siglo.

Hoy día están disponibles para todos los modelos de motocross y quads/ATV, además de ser distribuidos por todo el mundo. Los filtros Twin Air cuentan con las especificaciones de serie (OEM) para más de 20 marcas de moto y es el filtro de aire oficial de Honda y Suzuki americanas, Kawasaki Racing Team, Suzuki Geboers, Honda Martin y Honda CAS, KTM Red Bull, y otros tantos equipos. Y sobre todo sigue siendo la opción predilecta para más campeones nacionales y mundiales que todas las demás marcas de filtros juntas.

 **Per alcuni aspetti, il motocross è nato nei Paesi Bassi.** Proprio qui, nel 1947, la federazione motociclistica olandese ospitò una gara a livello internazionale chiamata "motocross", a cui parteciparono Gran Bretagna, Belgio e Paesi Bassi. Nonostante la popolarità di questo sport crebbe costantemente nei 25 anni successivi, un sentimento di frustrazione si fece sempre più spazio in coloro che lo praticavano nei Paesi Bassi. Questo perché, anche se le dune basse e i campi offrivano il terreno perfetto per le gare, i filtri aria di serie in carta non erano adatti al suolo sabbioso e grossolano. In commercio vi era un filtro in carta con un singolo strato di spugna, ma non era in grado di fornire protezione sufficiente, rendendosi inutilizzabile dopo soli 30 minuti.

Nel 1972, il mondo del motocross andò incontro a un cambiamento storico grazie a un prodotto rivoluzionario: un filtro aria laminato e a doppio strato che, se immerso in un olio speciale, consentiva il passaggio dell'aria verso il carburatore e allo stesso tempo catturava sporco, detriti, sabbia e acqua. Era efficace, a lunga durata, lavabile e riutilizzabile. La produzione di questa nuova tipologia di filtri decollò e la piccola start-up che li aveva sviluppati ancora oggi continua ad avere successo.

Evolvendo continuamente e in parallelo al design e alla tecnologia del mondo motociclistico, i filtri e gli accessori Twin Air sono un passo avanti rispetto alla concorrenza da ormai mezzo secolo.

Oggi, questi prodotti vengono distribuiti a livello mondiale e sono disponibili per tutti i veicoli motocross e quad/ATV. I filtri Twin Air hanno le stesse specifiche di quelli OEM prodotti da più di venti case motociclistiche e sono i filtri aria ufficiali di American Honda, Suzuki, Kawasaki Racing Team, Suzuki Geboers, Honda Martin, Honda CAS, KTM Red Bull e molti altri team. Campioni mondiali e nazionali scelgono i filtri Twin Air più spesso di quanto non facciano con tutte le altre marche di filtri aria messe assieme.



PRODUKTE / PRODUITS / PRODUCTOS / PRODOTTI

PRODUCTS



AIR FILTER / LUFTFILTER / FILTRE À AIR / FILTRO DE AIRE / FILTRO ARIA

- UK**
- a) **Standard filter** (Dual stage foam)
 - b) **Backfire-filter** (Triple stage foam)
 - c) **Pre-oiled filter** (completely submerged in BIO Liquid Power Filter Oil)
 - Motorcycle, ATV, 2 Stroke, 4 Stroke (with free flowing, backfire resistant foam laminated to the inside of the filter - eliminates restrictive, stock backfire screen)
 - Washable / Reusable (reusing a Twin Air filter 40-50 times is common)
 - Greaseless sealing ring
 - High Quality (assembled by hand and inspected for a perfect fit)

- DE**
- a) **Standard-Filter** (Doppellagiger Schaumstoff)
 - b) **Backfire-Filter** (Dreilagiger Schaumstoff)
 - c) **Vorgeölrter Filter** (Komplett in BIO Liquid Power Öl getränkt)
 - Motorrad, ATV, 2-Takt, 4-Takt (mit laminiertem, funkenresistentem Schaumstoff auf der Rückseite für einen guten Luftdurchfluss - ersetzt das durchflusshemmende Original-Funkenfängernetz)
 - Waschbar/wiederverwendbar (in der Regel wird ein Twin Air Filter 40-50 mal verwendet)
 - Fettfreier Dichtring
 - Hochwertige Qualität (von Hand zusammengebaut und geprüft für eine perfekte Passform)

- FR**
- a) **Filtre standard** (Mousse double épaisseur)
 - b) **Filtre pare-flammes** (Mousse triple épaisseur)
 - c) **Filtre pré-huilé** (Complètement submergé dans de l'huile de filtre BIO Liquid Power)
 - Moto, quad, 2 temps, 4 temps (avec une mousse pare-flammes laminée à l'intérieur du filtre qui crée un excellent flux et qui élimine la grille pare-flammes contraignante)
 - Lavable / Réutilisable (réutiliser un filtre Twin Air 40 - 50 fois est normal)
 - Joint sans graisse
 - Haute qualité (assemblé à la main et compatibilité parfaite)

- ES**
- a) **Filtro estándar** (espuma doble capa)
 - b) **Filtro de espuma ignífuga** (espuma triple capa)
 - c) **Filtro prelubricado** (completamente empapado en aceite de filtro BIO Liquid Power)
 - Moto, quad/ATV, 2 tiempos, 4 tiempos (con espuma de alto flujo, ignífuga al estar laminada hacia el interior del filtro lo que elimina la restrictiva pantalla anti-deflagraciones de serie)
 - Lavable / Reutilizable (es normal reutilizar un filtro Twin Air hasta en 40-50 ocasiones)
 - Anillo de sellado sin grasa
 - Altísima calidad (ensamblado a mano e inspeccionado para un ajuste perfecto)

- IT**
- a) **Filtro standard** (spugna a doppio strato)
 - b) **Filtro con protezione contro il ritorno di fiamma** (spugna a triplo strato)
 - c) **Filtro pre-oliato** (completamente immerso in olio BIO Liquid Power)
 - Moto, quad/ATV, 2 tempi, 4 tempi (la spugna ad alto flusso d'aria, resistente al ritorno di fiamma e laminata nella parte interna del filtro, rende obsoleta la protezione di serie contro il ritorno di fiamma)
 - Lavabile/riutilizzabile (circa 40-50 utilizzi in media)
 - L'anello di tenuta non necessita di grasso
 - Altissima qualità (assemblato a mano e sottoposto a rigorosi controlli per garantire un'installazione precisa)

POWERFLOW KIT / POWERFLOW KIT / KIT POWERFLOW / KIT POWERFLOW / KIT POWERFLOW

- UK**
- Include a BIO Factory Pre-Oiled Air Filter.
 - Replacement filters are available separately.
 - Motorcycle, ATV, 2 Stroke, 4 Stroke
 - Lightweight Aluminum Flange
 - Anodized For Durability

- DE**
- Enthält einen vorgeölrten BIO Factory Luftfilter
 - Ersatz-Filter sind separat erhältlich
 - Motorrad, ATV, 2-Takter, 4-Takter
 - Leichter Aluminiumflansch
 - Eloxierte Oberfläche für längere Haltbarkeit

- FR**
- Comprend un filtre à air pré-huilé Factory BIO
 - Filtres de rechange disponibles séparément
 - Moto, quad, 2 temps, 4 temps
 - Bride légère en aluminium
 - Anodisé pour plus de solidité

- ES**
- Incluye un filtro de aire prelubricado BIO Factory
 - Filtros de recambio disponibles por separado
 - Moto, quad/ATV, 2 tiempos, 4 tiempos
 - Rebord de fijación ligero en aluminio
 - Anodizado para mayor durabilidad

- IT**
- Include un filtro aria pre-oliato BIO Factory
 - I filtri di ricambio sono disponibili separatamente
 - Moto, quad/ATV, 2 tempi, 4 tempi
 - Flangia in alluminio ultraleggero
 - Finitura anodizzata per la massima durata





DUST COVER / STAUBFILTER / CACHE-POUSSIÈRE / PROTECCIÓN ANTI-POLVO / PROTEZIONE ANTIPOLVERE

- a) Cache-poussière** (Mousse simple épaisseur)
- b) Protection contre la pluie** (Mousse simple épaisseur)
- c) Cache Grand-Prix** (Chaussettes de filtre avec du nylon)

- Mettez-le par-dessus votre filtre Twin Air lorsque vous roulez dans des conditions extrêmes de poussière et de sable
- Le préfiltre en mousse épaisse huilé pour une efficacité maximale constitue une couche supplémentaire de protection, augmentant le temps de fonctionnement entre chaque nettoyage du filtre

- a) Dustcover** (Single stage foam)
- b) Rain Coat** (Single stage foam)
- c) Grand-Prix-Cover** (Filter socks with Nylon)

- Fit this over your Twin Air Filter when you're riding in severe conditions such as heavy dust and sand
- This coarse foam pre-filter, oiled for maximum benefit, will act as an additional layer of protection and extend the service time between filter cleanings

- a) Staubfilter** (Einlagiger Schaumstoff)
- b) Regenhülle** (Einlagiger Schaumstoff)
- c) Grand-Prix-Hülle** (Filterhüllen mit Nylon)

- Perfekt für die Nutzung unter schwierigen Bedingungen wie in staubigem oder sandigem Gelände
- Der vorgeölte Vorfilter aus grobem Schaumstoff ist besonders langlebig, fungiert als zusätzliche Schutzschicht und verlängert das Wartungsintervall zwischen Filterreinigungen

- a) Funda para polvo** (espuma monocapa)
- b) Funda para lluvia** (espuma monocapa)
- c) Funda Grand Prix** (funda para filtro con nylon)

- Colóquelas sobre su filtro Twin Air cuando vaya a pilotar en condiciones extremas de mucho polvo y arena
- Este pre-filtro en espuma gruesa, lubricado además para máximo rendimiento, actúa como una capa de protección adicional y prolonga el tiempo de servicio entre lavados

- a) Protezione antipolvere** (spugna a strato singolo)
- b) Protezione antipioggia** (spugna a strato singolo)
- c) Protezione antipolvere Grand-Prix** (copertura in nylon)

- Questo tipo di protezione viene applicato sul filtro Twin Air quando si guida in condizioni difficili, quali polvere e sabbia
- Il prefiltro in spugna a grana grossa, oliato per ottenere il massimo beneficio, funge da strato protettivo aggiuntivo ed estende il periodo di utilizzo tra un lavaggio e l'altro

AIRBOX COVER / AIRBOX-ABDECKUNG / CACHE DE BOÎTE À AIR / TAPA CAJA DEL FILTRO / COPERCHIO SCATOLA FILTRO

- Prevent water and cleansers from entering your intake when you clean your airbox
- Tough, durable ABS plastic with a new, double-seal neoprene ring that compresses tight against the airbox for a perfect, leak-free fit
- Includes mounting screw

- Empêche à l'eau et aux produits de nettoyage d'entrer quand vous nettoyez votre boîte à air
- Plastique ABS solide avec un joint double en néoprène qui permet une étanchéité parfaite
- Vis de montage comprise

- Verhindern das Eindringen von Wasser und Reinigern während der Reinigung der Airbox
- Stabiler, langlebiger ABS-Kunststoff mit einem neuartigen doppelt abdichtenden Neoprenring, der fest an der Airbox sitzt
- Inklusive Montageschraube

- Evita la entrada de agua y detergente a la admisión durante el lavado de la caja del filtro
- En robusto plástico ABS altamente resistente con un nuevo aro de doble sellado en neopreno que se solapa a la caja del filtro para un ajuste totalmente estanco
- Incluido tornillo de montaje

- Evita che acqua e detergente penetrino all'interno del carburatore durante la pulizia della scatola filtro
- Solida e resistente struttura in ABS con doppio anello di tenuta in neoprene che comprime saldamente la scatola filtro per un'installazione precisa e senza perdite
- Vite di montaggio inclusa



OIL FILTER / ÖLFILTER / FILTRE À HUILE / FILTRO DE ACEITE / FILTRO OLIO

- L'entreprise a étendu son champ de travail aux filtres à huile
- Maintenant il n'y a qu'un seul nom à retenir quand vous pensez à une protection optimale, une haute performance et à la qualité dans les filtres et leurs produits dérivés : Twin Air

- The company that set the clean air standard for your engine extends their expertise to oil filters
- Now there's only one name you need to remember for maximum protection, performance and value in all of your filters and related products: Twin Air

- La marca de referencia especializada en suministrar aire limpio a tu motor también extiende su pericia a los filtros de aceite
- A partir de ahora tan solo tendrás que recordar un nombre como sinónimo de máxima protección, rendimiento y asequibilidad para todos tus filtros y productos relacionados: Twin Air

- Das Unternehmen, das neue Maßstäbe für saubere Motorluft gesetzt hat, erweitert sein Sortiment jetzt um Ölfilter
- Jetzt muss man sich nur noch einen einzigen Namen merken, wenn es um Filter und Zubehör für maximalen Schutz, Performance und Qualität geht: Twin Air

- L'azienda che ha definito lo standard nel mercato dei filtri aria estende ora le proprie competenze ai filtri olio
- Quando si parla di massima protezione, prestazioni e convenienza in merito a filtri e prodotti simili, c'è solo un nome da ricordare: Twin Air



MODELLE / APPLICATIONS / APLICACIONES / APPLICAZIONI

FITMENTS



MODEL/DESCRIPTION	YEAR	STANDARD	BACKFIRE	PRE-OILED	POWERFLOW KIT			GRAND PRIX /	AIRBOX	OIL
		FILTER	AIR FILTER	AIR FILTER	+ REPLACEMENT PARTS	DUST COVERS	COVERS	FILTER		
		#	#	#	KIT #	FILTER #	PRE-OILED FILTER #	#	#	#
APRILIA										
SXV/RXV 450/550	04-11	-	1011-2811	-	1011-2830	1011-2811 ¹	-	-	-	-
MXV 450/550	08-11	-	1011-2813	-	-	1011-2813	-	-	-	-
BETA										
Trial EVO 2-strk 80/125/200/250/290	09-17	1011-2387	-	-	-	-	-	-	-	-
Trial EVO 4-strk 250/300	09-17	1011-2387	-	-	-	-	-	-	-	-
Trial 260	94-99	1011-2388	-	-	-	-	-	-	-	-
BETA REV 3	02-08	1011-2389	-	-	-	-	-	-	-	-
Enduro 250/450	05-08	1011-2386	-	-	-	-	-	-	1011-2425	-
Enduro 4-str Enduro 250-525	05-12	1011-2386	-	-	-	-	-	-	1011-2425	-
Enduro RR XTrainer 2strk 250/300	13-18	1011-3015	-	1011-3136	-	-	-	1011-4134	1011-2425	-
End. RR 4strk 350/390/400/430/450/480/525	13-18	1011-3015	-	1011-3136	-	-	-	1011-4134	1011-2425	0712-0498
Enduro 2-stroke 125/200/250/300	2020	1011-4372	-	1011-4408	-	-	-	-	1014-0295	-
Enduro 4-stroke 350/390/430/480	2020	1011-4372	-	1011-4408	-	-	-	-	1014-0295	-
RS 4 stroke 390/430/500	15-19	1011-3015	-	1011-3136	-	-	-	1011-4134	1011-2425	0712-0498
BMW										
G-450 X Enduro	08-11	1011-2800	-	-	-	-	-	-	-	0712-0376
BULTACO										
Frontere, Pursang	thru '79	1011-2382	-	-	-	-	-	-	-	-
Sherco	99-04	1011-2381	-	-	-	-	-	-	-	-
CZ										
125/250	65-89	1011-2402	-	-	-	-	-	-	-	-
GAS GAS										
MX 80, 125 MX/Enduro	ALL	1011-2394	-	-	-	-	-	-	-	-
125 Trials	97-99	1011-2393	-	-	-	-	-	-	-	-
125 Trials	00-04	1011-2396	-	-	-	-	-	-	-	-
125 Enduro/Halley/SM 2-strk	08-17	1011-2391	-	-	-	-	-	-	1011-2426	-
125 Halley 4-Strk	08-17	-	1011-2462	-	-	1011-2462	-	-	-	-
125 Trials	08-10	1011-2392	-	-	-	-	-	-	-	-
200 Trials	94-99	1011-2393	-	-	-	-	-	-	-	-
200 Trials	00-06	1011-2396	-	-	-	-	-	-	-	-
200/250 MX/end.	thru 06	1011-2394	-	-	-	-	-	-	-	-
250 Trials	02-10	1011-2392	-	-	-	-	-	-	-	-
EC 2-Stroke 125/200/250/300 Enduro	07-17	1011-2391	-	-	-	-	-	-	1011-2426	-
250 4-Strk Enduro/Halley/SM	07-17	-	-	-	-	1011-2462	-	-	1011-2426	-
EX/XC 200/250/300	18-19	1011-4016	-	1011-4409	-	-	-	-	1011-4017	-
270 Trials	97-99	1011-2393	-	-	-	-	-	-	-	-
280 Trials	00-01	1011-2396	-	-	-	-	-	-	-	-
250/280/300Trials	02-17	1011-2392	-	-	-	-	-	-	-	-
300 MX/Enduro	thru 06	1011-2394	-	-	-	-	-	-	22950	-
320 Trials	97-99	1011-2393	-	-	-	-	-	-	-	-
321 Trials	00-06	1011-2396	-	-	-	-	-	-	-	-
450	03-06	1011-2394	-	-	-	-	-	-	22950	140001
450/515 4-Strk Enduro/Halley/SM	07-17	-	-	-	-	1011-2462	-	-	1011-2426	-
HONDA										
XR/CRF50	00-20	150318	-	-	-	-	-	-	-	-
XR/CRF70	97-18	150318	-	-	-	-	-	-	-	-
CR80/Expert	86-02	22406	-	1011-0566	-	-	-	-	22960	-
CR85	03-10	22406	-	1011-0566	-	-	-	-	22960	-
CRE80	All	22406	-	1011-0566	-	-	-	-	-	-
XR/CRF 80/100	98-16	150319	-	-	-	-	-	-	-	-
CRF110	13-20	1011-3080	-	-	-	-	-	-	-	-
CR125	82-85	22501	-	-	-	-	-	1011-4140	-	-

¹⁻¹³ For all Notes: See page 17



OFFROAD



MODEL/DESCRIPTION	YEAR	STANDARD FILTER	BACKFIRE AIR FILTER	PRE-OILED AIR FILTER	POWERFLOW KIT + REPLACEMENT PARTS			GRAND PRIX / DUST COVERS	AIRBOX COVERS	OIL FILTER
		#	#	#	KIT #	FILTER #	PRE-OILED FILTER #	#	#	#
HONDA (CONT.)										
CR125	1986	22400	-	-	-	-	-	1011-4140	-	-
CR125	87-88	22620	-	-	-	-	-	1011-4140	-	-
CR125	89-99	22627	-	1011-0567	-	-	-	1011-0438	22950	-
CR125	00-01	150206	-	1011-0568	-	-	-	1011-0438	22950	-
CR125	02-07	150207	-	1011-0569	150198CC	150198	-	1011-0438	22950	-
CRE125	All	22627	-	1011-0567	-	-	-	1011-0438	22950	-
CRF125F/Big Wheel	14-20	1011-4173	-	-	-	-	-	-	-	-
CRF150F	03-20	150211	-	-	-	-	-	-	-	-
CRF150R Mini Racer	07-20	1011-0923	-	1011-0924	-	-	-	-	1014-0034	140003
XR200	84-85	-	-	-	-	-	-	-	-	140001
XR200R	81-83	-	-	-	-	-	-	-	-	140001
XR200R	84-02	-	-	-	-	-	-	-	-	140001
CRF230F	03-20	150211	-	-	-	-	-	-	-	-
CR250	79-81	1011-2360	-	-	-	-	-	-	-	-
CR250	82-85	22501	-	-	-	-	-	1011-4140	-	-
CR250	1986	22400	-	-	-	-	-	1011-4140	-	-
CR250	1987	22620	-	-	-	-	-	1011-4140	-	-
CR250	88-99	22627	-	1011-0567	-	-	-	1011-4140	22950	-
CR250	00-01	150206	-	1011-0568	-	-	-	1011-0438	22950	-
CR250	02-07	150207	-	1011-0569	150198CC	150198	-	1011-0438	22950	-
CRF 250R	04-05	150209	1011-2441	1011-0570	-	1011-2042 ¹	1011-0571 ¹	1011-0437	160067	140003
PowerFlow kit with Inner Ring	-	-	-	-	-	1011-1519 ¹	1011-0572 ¹	1014-0104 ⁵	-	-
CRF 250R	06-09	150209	1011-2441	1011-0570	-	1011-2042 ¹	1011-0571 ¹	1011-0437	160067	140003
PowerFlow kit with Inner Ring	-	-	-	-	-	-	-	1014-0104 ⁵	-	-
CRF 250X	04-17	150209	1011-2441	1011-0570	-	1011-2042 ¹	1011-0571 ¹	1011-0437	160067	140003
PowerFlow kit with Inner Ring	-	-	-	-	-	1011-1519 ¹	1011-0572 ¹	-	-	-
CRF 250R	10-13	1011-1442	1011-2444	1011-1443	-	1011-2444	-	-	1014-0041	140003
PowerFlow kit with Inner Ring	-	-	-	-	-	1011-1655 ¹	1011-2445 ¹	-	-	-
CRF 250R	14-17	1011-2945	-	1011-3135	1011-2946	1011-2947	1011-4131	1011-4135	1014-0162	140003
CRF 250R	18-19	1011-3875	1011-3925	1011-3925	1011-3877	1011-3876	1011-3926 ¹	1011-3927 ⁵	1011-3878	140003
		-	1011-3926 ¹	-	-	-	-	1011-4146 ⁵	-	-
CRF 250R	2020	1011-4367	1011-4370	1011-4368	1011-4371	1011-4370	1011-4401	1011-4369	1011-3878	140003
CRF 250RX	19-20	1011-3875	-	1011-3925	1011-3877	1011-3876	1011-3926 ¹	1011-3927 ⁵	1011-3878	140003
CRM250	89-93	22144	-	-	-	-	-	-	-	-
CRM250	94-01	1011-3003	-	-	-	-	-	-	-	-
CRM250AR	97-	1011-3003	-	-	-	-	-	-	-	-
Super XR250	97-04	22144	-	-	150601C ⁸	1011-0649 ¹	-	-	-	140001
XL250R	84-87	-	-	-	-	-	-	-	-	140001
XR250 Baja	All	22144	-	-	150601C ⁸	1011-0649 ¹	-	-	-	140001
XR250	83-86	-	-	-	-	-	-	-	-	140001
XR250R	87-06	22144	-	-	150601C ⁸	1011-0649 ¹	-	-	-	140001
CRE260	All	22627	-	1011-0567	-	-	-	1011-4140	-	-
XL350	All	-	-	-	-	-	-	-	-	140001
XR350	83-88	-	-	-	-	-	-	-	-	140001
XR400	96-06	22144	-	-	150601C ⁸	1011-0649 ¹	-	-	-	140001
CRF450R	2002	150208	-	-	-	-	-	-	-	140003
CRF450R	03-08	150209	1011-2441	1011-0570	-	1011-2042 ¹	1011-0571 ¹	1011-0437	160067	140003
PowerFlow kit with Inner Ring	-	-	-	-	-	1011-1519 ¹	1011-0572 ¹	-	-	-
CRF450R	09-12	1011-1442	1011-2444	1011-1443	-	1011-2444	-	-	1014-0041	140003
PowerFlow kit with Inner Ring	-	-	-	-	-	1011-1655 ¹	1011-2445 ¹	-	-	-
CRF450R	13-16	1011-2945	-	1011-3135	1011-2946	1011-2947	1011-4131	1011-4135	1014-0162	140003
CRF450R	17-20	1011-3875	-	1011-3925	1011-3877	1011-3876	1011-3926 ¹	1011-3927 ⁵	1011-3878	140003

¹⁻¹³ For all Notes: See page 17



MODELLE / APPLICATIONS / APLICACIONES / APPLICAZIONI

FITMENTS



MODEL/DESCRIPTION	YEAR	STANDARD	BACKFIRE	PRE-OILED	POWERFLOW KIT			GRAND PRIX /	AIRBOX	OIL
		FILTER	AIR FILTER	AIR FILTER	+ REPLACEMENT PARTS	PRE-OILED	DUST COVERS	COVERS	FILTER	
		#	#	#	KIT #	FILTER #	FILTER #	#	#	#
HONDA (CONT.)										
CRF450X	05-17	150209	-	1011-0570	-	1011-2042 ¹	1011-0571 ¹	1011-0437	160067	140003
PowerFlow kit with Inner Ring		-	-	-	-	1011-1519 ¹	1011-0572 ¹	-	-	-
CRF450RX	17-20	1011-3875	-	1011-3925	1011-3877	1011-3876	1011-3926 ¹	1011-3927 ⁵	1011-3878	140003
		-	-	-	-	-	-	1011-4146 ⁵	-	-
CRF450X / CRF450L	19-20	1011-4289	-	1011-4402	1011-4302	1011-4301	1011-4339	1011-4403	1014-0294	140003
CRF450RWE	19-20	1011-3875	-	1011-3925	1011-3877	1011-3876	1011-3926 ¹	1011-3927 ⁵	1011-3878	140003
CR500	82-85	22501	-	-	-	-	-	1011-4140	-	-
CR500	1986	22400	-	-	-	-	-	1011-4140	-	-
CR500	87-88	22620	-	-	-	-	-	1011-4140	-	-
CR500	89-99	22627	-	1011-0567	-	-	-	1011-4140	22950	-
CR500	00-01	150206	-	1011-0568	-	-	-	1011-0438	22950	-
XL500	82-83	-	-	-	-	-	-	-	-	140001
XR500	81-82	-	-	-	-	-	-	-	-	140001
XR500 (50mm ID clamp on)	81-82	-	-	-	-	-	-	-	-	140001
XR500	83-85	-	-	-	-	-	-	-	-	140001
600 Trans Alp	All	1011-3002	-	-	-	-	-	-	-	-
XL600	83-87	22502X	-	-	-	-	-	-	-	140001
XR600	87-02	22144	-	-	150601C ⁸	1011-0649 ¹	-	-	-	140001
XR650L	93-20	150601C	-	-	150601C ⁸	1011-0649 ¹	-	-	-	140001
XR650R	00-07	150505	-	-	-	-	-	-	-	140001
CRF1000L Africa Twin	16-20	1011-3938	-	-	-	1011-3937	-	-	-	-
Must have 1011-3938 first ⁹		-	-	-	-	1011-3937	-	-	-	-
HUSABERG										
FC (GP)	97-99	-	-	-	-	-	-	-	-	140013
Husaberg	00-03	158188	-	-	-	-	-	-	-	140013
125/250/300 TE 2-Stroke	11-12	1011-1927	-	1011-1917	-	1011-1320	-	1011-2449	1014-0035	-
125/250/300 TE 2-Stroke	2013	1011-2299	-	1011-2300	-	-	-	1011-2301	1014-0094	-
390 FE	09-12	1011-1649	-	-	-	1011-2816 ¹	-	-	-	140013
450/570 FE/FEE/FC/FS	2008	158188	-	-	-	-	-	-	-	140013
450/570 FE	09-12	1011-1649	-	-	-	1011-2816 ¹	-	-	-	140013
250/350/450/501 FE	2013	1011-2299	-	1011-2300	-	-	-	1011-2301	1014-0094	-
HUSQVARNA										
Husky 50	99-11	1011-3019	-	-	-	-	-	-	-	-
TC 50	17-20	1011-1657	-	-	-	-	-	-	-	-
TC 65	17-20	154514	-	1011-0588	-	-	-	1011-0443	160069	-
TC 85	14-17	1011-2299	-	1011-2300	-	-	-	1011-2301	1014-0094	-
TC 85	18-20	1011-4012	-	1011-4412	1011-4014	1011-4013	-	-	1011-4015	-
CR/RWR 125	92-13	22804	1011-2456 ⁴	1011-2457	-	-	-	1011-2455	160085	-
TC 125	14-15	1011-2299	-	1011-2300	-	-	-	1011-2301	1014-0094	-
TE 125	13-16	1011-2299	-	1011-2300	-	-	-	1011-2301	1014-0094	-
TC 125	16-18	1011-3338	-	1011-3339	1011-3518	1011-3517	-	1011-3340 ⁵	1014-0224	-
		-	-	-	-	-	-	1011-4143 ⁶	-	-
TX 125	17-18	1011-3338	-	1011-3339	1011-3518	1011-3517	-	1011-3340	1014-0224	-
TC / TX 125	19-20	1011-3338	-	1011-3339	1011-4275	1011-4274	-	1011-3340 ⁵	1014-0224	-
TE 150	17-18	1011-3338	-	1011-3339	1011-3518	1011-3517	-	1011-3340	1014-0224	-
TE 150	19-20	1011-3338	-	1011-3339	1011-4275	1011-4274	-	1011-3340	1014-0224	-
CR/RWR 250	92-13	22804	1011-2456 ⁴	1011-2457	-	-	-	1011-2455	160085	-
TC/TE/TXC 250 4-stroke	02-13	22804	1011-2456 ⁴	1011-2457	-	-	-	1011-2455	160085	140012
TC 250	14-16	1011-2299	-	1011-2300	-	-	-	1011-2301	1014-0094	-
TE 250	13-16	1011-2299	-	1011-2300	-	-	-	1011-2301	1014-0094	-
TE / TC 250	17-18	1011-3338	-	1011-3339	1011-3518	1011-3517	-	1011-3340	1014-0224	-
TE 250i	18-20	1011-3338	-	1011-3339	1011-3518	1011-3517	-	1011-3340	1014-0224	-
TE / TC 250	19-20	1011-3338	-	1011-3339	1011-4275	1011-4274	-	1011-3340	1014-0224	-

¹⁻¹³ For all Notes: See page 17



OFFROAD



MODEL/DESCRIPTION	YEAR	STANDARD FILTER	BACKFIRE AIR FILTER	PRE-OILED AIR FILTER	POWERFLOW KIT + REPLACEMENT PARTS			GRAND PRIX / DUST COVERS	AIRBOX COVERS	OIL FILTER
		#	#	#	KIT #	FILTER #	PRE-OILED FILTER #	#	#	#
HUSQVARNA (CONT.)										
FE 250	13-16	1011-2299	-	1011-2300	-	-	-	1011-2301	1014-0094	0712-0133
FE 250	17-18	1011-3338	-	1011-3339	1011-3341	1011-3342	1011-4127	1011-3340	1014-0224	0712-0133
FC 250	14-15	1011-2299	-	1011-2300	-	-	-	1011-2301	1014-0094	0712-0133
FC 250	16-18	1011-3338	1011-3342	1011-3339	1011-3341	1011-3342	1011-4127	1011-3340	1014-0224	0712-0133
		-	-	-	-	-	-	1011-4143 ⁶	-	-
FC / FE 250	19-20	1011-3338	-	1011-3339	1011-4273	1011-4272	-	1011-3340	1014-0224	0712-0133
WR 300	09-13	22804	1011-2456 ⁴	1011-2457	-	-	-	1011-2455	160085	-
TE 300	13-16	1011-2299	-	1011-2300	-	-	-	1011-2301	1014-0094	-
TE 300	17-18	1011-3338	-	1011-3339	1011-3518	1011-3517	-	1011-3340	1014-0224	-
TE 300i	18-20	1011-3338	-	1011-3339	1011-3518	1011-3517	-	1011-3340	1014-0224	-
TE / TX 300	19-20	1011-3338	-	1011-3339	1011-4275	1011-4274	-	1011-3340	1014-0224	-
TE 310	09-13	22804	-	-	-	-	-	1011-2455	160085	0712-0375
TXC 310	11-13	22804	-	-	-	-	-	1011-2455	160085	-
FC 350	14-15	1011-2299	-	1011-2300	-	-	-	1011-2301	1014-0094	0712-0133
FE 350	13-16	1011-2299	-	1011-2300	-	-	-	1011-2301	1014-0094	0712-0133
FE 350	17-18	1011-3338	-	1011-3339	1011-3341	1011-3342	1011-4127	1011-3340	1014-0224	0712-0133
FC 350	16-18	1011-3338	1011-3342	1011-3339	1011-3341	1011-3342	1011-4127	1011-3340	1014-0224	0712-0133
		-	-	-	-	-	-	1011-4143 ⁶	-	-
TE 350	17-18	1011-3338	-	1011-3339	1011-3518	1011-3517	-	1011-3340	1014-0224	-
TE 350	19-20	1011-3338	-	1011-3339	1011-4275	1011-4274	-	1011-3340	1014-0224	-
FX 350	17-18	1011-3338	-	1011-3339	1011-3341	1011-3342	1011-4127	1011-3340	1014-0224	0712-0133
FC / FE / FX 350	19-20	1011-3338	-	1011-3339	1011-4273	1011-4272	-	1011-3340	1014-0224	0712-0133
CR/WR360	92-03	22804	1011-2456 ⁴	1011-2457	-	-	-	1011-2455	160085	-
TE/WRE410	97-03	157100	-	-	-	-	-	-	-	140012
TE/TC/TXC/SM 450	02-13	22804	1011-2456 ⁴	1011-2457	-	-	-	1011-2455	160085	140012
FC 450	14-15	1011-2299	-	1011-2300	-	-	-	1011-2301	1014-0094	0712-0134
FC 450	16-18	1011-3338	1011-3342	1011-3339	1011-3341	1011-3342	1011-4127	1011-3340	1014-0224	0712-0133
		-	-	-	-	-	-	1011-2301	-	-
FE 450	13-16	1011-2299	-	1011-2300	-	-	-	1011-2301	1014-0094	0712-0134
FE 450*	17-18	1011-3338	-	1011-3339	1011-3341	1011-3342	1011-4127	1011-3340	1014-0224	0712-0133
FC / FE* / FX / FS 450	19-20	1011-3338	-	1011-3339	1011-4273	1011-4272	-	1011-3340	1014-0224	0712-0133
(FE 450 - USA ONLY)	17-20	1011-3338	-	1011-3339	1011-3962	1011-3961	-	1011-3340	1014-0224	0712-0133
FX 450 Cross Country	17-18	1011-3338	-	1011-3339	1011-3341	1011-3342	1011-4127	1011-3340	1014-0224	0712-0133
FS 450 Supersmoto	16-18	1011-3338	-	1011-3339	1011-3341	1011-3342	1011-4127	1011-3340	1014-0224	0712-0133
FR 450 Rally	16-18	1011-1658	-	-	-	-	-	-	-	-
FR 450 Rally	2019	1011-4410	-	1011-4411	-	-	-	-	-	-
2-Stroke	83-84	1011-2379	-	-	-	-	-	-	-	-
2-Stroke	85-89	1011-2380	-	-	-	-	-	-	-	-
4-Stroke	89-91	1011-2380	-	-	-	-	-	-	-	140012
4-Stroke	92-99	22810	-	-	-	-	-	-	-	140012
TC/TXC 449	12-13	1011-2808	-	-	-	-	-	-	-	0712-0376
SWM Enduro/Motard RS300/RS500/SM500	15-16	22804	-	-	-	-	-	1011-2455	160085	-
FE 501	13-16	1011-2299	-	1011-2300	-	-	-	1011-2301	1014-0094	-
FE 501	17-20	1011-3338	-	1011-3339	1011-3962	1011-3961	-	1011-3340	1014-0224	0712-0133
TE 510	03-10	22804	1011-2456 ⁴	1011-2457	-	-	-	1011-2455	160085	140012
TE/TXC 511, SMR 511	11-13	1011-2808	-	-	-	-	-	-	-	0712-0376
TE/WRE610	97-03	157100	-	-	-	-	-	-	-	140012
TE/SM 610	06-09	155506	-	-	-	-	-	-	-	140012
SM 610	10-11	155506	-	-	-	-	-	-	-	140012
TC/TE/SM 570/600/630	All	155506	-	-	-	-	-	-	-	140012
SWM Enduro/Motard RS650/SM650	15-16	155506	-	-	-	-	-	-	-	140012
Supersmoto/Enduro 701	16-19	1011-3960	-	-	-	1011-3959	-	-	-	-
		-	-	-	-	1011-3959	-	-	-	-

¹⁰ Must have 1011-3960 first

¹¹³ For all Notes: See page 17



MODELLE / APPLICATIONS / APLICACIONES / APPLICAZIONI

FITMENTS



MODEL/DESCRIPTION	YEAR	STANDARD	BACKFIRE	PRE-OILED	POWERFLOW KIT			GRAND PRIX /	AIRBOX	OIL
		FILTER	AIR FILTER	AIR FILTER	+ REPLACEMENT PARTS	PRE-OILED	DUST COVERS	COVERS	FILTER	
		#	#	#	KIT #	FILTER #	FILTER #	#	#	#
KAWASAKI										
KDX 50	05-06	151799	-	-	-	-	-	-	-	-
KX60	86-03	22405	-	-	-	-	-	-	-	-
KX65	00-20	151010	-	1011-0574	-	-	-	1011-2440 ⁵	22962	-
KX80	86-90	22408	-	-	-	-	-	1011-2440 ⁵	-	-
KX80, KX85	91-20	22402	-	1011-0573	-	-	-	1011-0440	22962	-
		-	-	-	-	-	-	1011-2440 ⁵	-	-
KX100	95-20	22402	-	1011-0573	-	-	-	1011-0440	22962	-
KLX110	02-20	151335	-	-	-	-	-	-	-	140001
KDX125SR	89-00	1011-2367	-	-	-	-	-	-	-	-
KX125	84-85	22504	-	-	-	-	-	-	-	-
KX125	87-89	22640	-	-	-	-	-	-	-	-
KX125	90-91	22645	-	-	-	-	-	-	22952	-
KX125	92-93	22646	-	-	-	-	-	-	-	-
KX125	94-96	22645	-	-	-	-	-	-	22952	-
KX125	97-01	22647	-	-	-	-	-	-	22952	-
KX125	02-05	151116	-	1011-0575	-	-	-	-	22952	-
KLX125/L	03-06	-	-	-	-	-	-	-	-	140005
KLX140	08-20	-	-	-	-	-	-	-	-	140001
KDX200, KDX220	89-07	22050	-	-	-	-	-	-	160076	-
KDX250	91-94	22055	-	-	-	-	-	-	-	-
KLX250	90-92	22640	-	-	-	-	-	-	-	-
KLX250	93-96	22055	-	-	-	-	-	-	-	140004
KLX250R	06-07	22050	-	-	-	-	-	-	-	140001
KLX250S	09-15	22640	-	-	-	-	-	-	-	140001
KX250	85-86	22504	-	-	-	-	-	-	-	-
KX250	87-89	22640	-	-	-	-	-	-	-	-
KX250	90-91	22645	-	-	-	-	-	-	22952	-
KX250	92-93	22646	-	-	-	-	-	-	-	-
KX250	94-96	22645	-	-	-	-	-	-	22952	-
KX250	97-01	22647	-	-	-	-	-	-	22952	-
KX250	02-07	151116	-	1011-0575	-	-	-	-	22952	-
KXF 250	04-05	1011-0010	-	1011-0577	-	-	-	1014-0104 ⁵	1014-0002	0712-0031
KXF 250	06-16	1011-0596	-	1011-0589	-	1011-0650	1011-0590	1011-0654	1014-0029	0712-0031
		-	-	1011-0590	-	-	-	1014-0104 ⁵	-	-
KXF250	17-20	1011-3624	-	1011-3649	1011-3626	1011-3625	-	1011-3650	1011-3627	0712-0031
		-	-	-	-	-	-	1011-4149 ⁶	-	-
KLX300R	97-10	22640	-	-	-	-	-	-	-	140001
KLX400R	03-04	-	-	-	-	-	-	-	-	140007
KXF450	06-15	1011-0596	-	1011-0589	-	1011-0650	1011-0590	1011-0654	1014-0029	140001
		-	-	-	-	-	-	1014-0104 ⁵	-	-
KXF450	16-18	1011-3624	-	1011-3649	1011-3626	1011-3625	-	1011-3650	1011-3627	0712-0031
		-	-	-	-	-	-	1011-4149 ⁶	-	-
		-	-	-	-	-	-	1014-0104 ⁵	-	-
KX 450	19-20	1011-4247	-	1011-4255	1011-4249	1011-4248	-	1011-4254	1011-4250	0712-0031
KLX450R	08-09	1011-1316	-	-	-	-	-	-	-	140001
KX500	85-86	22504	-	-	-	-	-	-	-	-
KX500	87-03	22640	-	-	-	-	-	-	-	-
KLR600	All	1011-3008	-	-	-	-	-	-	-	-
KLR650, KLX650c	93-96	22648	-	-	-	-	-	-	-	140004
KLX650A/R	93-96	22640	-	-	-	-	-	-	-	140004
KTM										
50 PRO Jr AC	97-04	1011-0225	-	-	-	-	-	-	-	-
50 PRO Sr LC	00-08	1011-0226	-	-	-	-	-	-	-	-
50 Mini/Sr Adventure/SX Pro Sr LC	09-20	1011-1657	-	-	-	-	-	-	-	-

¹⁻¹³ For all Notes: See page 17



OFFROAD



MODEL/DESCRIPTION	YEAR	STANDARD	BACKFIRE	PRE-OILED	POWERFLOW KIT + REPLACEMENT PARTS			GRAND PRIX /	AIRBOX	OIL
		FILTER	AIR FILTER	AIR FILTER	KIT #	FILTER #	PRE-OILED FILTER #	DUST COVERS	COVERS	FILTER
		#	#	#				#	#	#
KTM (CONT.)										
50 - 40mm	00-10	1011-1656	-	-	-	-	-	-	-	-
50SX	09-18	1011-4298	-	-	-	-	-	-	-	-
65SX/XC	97-08	154514	-	1011-0588	-	-	-	1011-0443	160069	-
		-	-	1011-2453 ⁴	-	-	-	-	-	-
85	2004	22509	-	1011-0586	-	-	-	1011-0444	160071	-
		-	-	-	-	-	-	1014-0105 ⁵	-	-
85 SX/XC	05-12	154112	-	1011-0587	-	154210	-	1011-0444	160071	-
		-	-	-	-	-	-	1014-0105 ⁵	-	-
85 SX/XC	13-17	1011-2299	-	1011-2300	-	-	-	1011-2301	1014-0094	-
85 SX	18-20	1011-4012	-	1011-4412	1011-4014	1011-4013	-	-	1011-4015	-
105 SX/XC	04-10	154112	-	1011-0587	-	154210	-	1011-0444	160071	-
		-	-	-	-	-	-	1014-0105 ⁵	-	-
125 all	86-97	22507	-	1011-4421	-	-	-	-	-	-
125 all (except EXE)	98-03	22509	-	1011-0586	-	154210	-	1011-0444	160071	-
		-	-	-	-	-	-	1014-0105 ⁵	-	-
125 EXE	00-03	1011-1926	-	-	-	-	-	-	-	-
125 2-Stroke models	04-06	154112	-	1011-0587	-	154210	-	-	160071	-
125 EXC	08-09	1011-0927	-	1011-0928	-	1011-1320	-	1011-2449	1014-0035	-
125 EXC	10-11	1011-1927	-	1011-1917	-	1011-1320	-	1011-2449	1014-0035	-
125 EXC	12-16	1011-2299	-	1011-2300	-	-	-	1011-2301	1014-0094	-
125 SX	07-09	1011-0927	-	1011-0928	-	1011-1320	-	1011-2449	1014-0035	-
		-	-	-	-	-	-	1014-0105 ⁵	-	-
125 SX	2010	1011-1927	-	1011-1917	-	1011-1320	-	1011-2449	1014-0035	-
125 SX	11-15	1011-2299	-	1011-2300	-	-	-	1011-2301	1014-0094	-
125 SX	16-18	1011-3338	-	1011-3339	1011-3518	1011-3517	-	1011-3340	1014-0224	-
		-	-	-	-	-	-	1011-4143 ⁶	-	-
125 SX	19-20	1011-3338	-	1011-3339	1011-4275	1011-4274	-	1011-3340	1014-0224	-
144 SX	07-09	1011-0927	-	1011-0928	-	154212	-	1011-2449	1014-0035	-
		-	-	-	-	-	-	1014-0105 ⁵	-	-
144 SX	2010	1011-1927	-	1011-1917	-	1011-1320	-	1011-2449	1014-0035	-
144 SX	11-15	1011-2299	-	1011-2300	-	-	-	1011-2301	1014-0094	-
150 SX	2009	1011-0927	-	1011-0928	-	154212	-	1011-2449	1014-0035	-
		-	-	-	-	-	-	1014-0105 ⁵	-	-
150 SX	2010	1011-1927	-	1011-1917	-	1011-1320	-	1011-2449	1014-0035	-
150 SX/XC	11-15	1011-2299	-	1011-2300	-	1011-2308	-	1011-2301	1014-0094	-
150 SX	16-18	1011-3338	-	1011-3339	1011-3518	1011-3517	-	1011-3340	1014-0224	-
		-	-	-	-	-	-	1011-4143 ⁶	-	-
150 SX	19-20	1011-3338	-	1011-3339	1011-4275	1011-4274	-	1011-3340	1014-0224	-
200 all	98-03	22509	-	1011-0586	-	-	-	1011-2449	160071	-
200 2-Stroke Models	04-07	154112	-	1011-0587	-	154210	-	1011-2449	160071	-
		-	-	-	-	-	-	1014-0105 ⁵	-	-
200 XC/XC-W	08-09	1011-0927	-	1011-0928	-	1011-1320	-	1011-2449	1014-0035	-
		-	-	-	-	-	-	1014-0105 ⁵	-	-
200 XC/XC-W	2010	1011-1927	-	1011-1917	-	1011-1320	-	1011-2449	1014-0035	-
200 EXC/XC-W	12-16	1011-2299	-	1011-2300	-	-	-	1011-2301	1014-0094	-
250 all	71-81	1011-2377	-	-	-	-	-	-	-	-
250 all	82-89	22507	-	1011-4421	-	-	-	-	-	-
250 all	90-97	22626X	-	-	-	-	-	-	-	-
250 all	98-03	22509	-	1011-0586	-	-	-	1011-0444	160071	-
		-	-	-	-	-	-	1014-0105 ⁵	-	-
250 2-Stroke Models/except SX '07	04-07	154112	-	1011-0587	-	154210	-	1011-0444	160071	140013
		-	-	-	-	-	-	1014-0105 ⁵	-	140014

¹⁻¹³ For all Notes: See page 17



MODELLE / APPLICATIONS / APLICACIONES / APPLICAZIONI

FITMENTS



MODEL/DESCRIPTION	YEAR	STANDARD	BACKFIRE	PRE-OILED	POWERFLOW KIT			GRAND PRIX /	AIRBOX	OIL
		FILTER	AIR FILTER	AIR FILTER	+ REPLACEMENT PARTS	DUST COVERS	COVERS	FILTER		
		#	#	#	KIT #	FILTER #	PRE-OILED FILTER #	#	#	#
KTM (CONT.)										
250 4-Stroke Models/except SX '07	04-07	154112	-	1011-0587	-	154212	-	1011-0444	160071	140013
		-	-	-	-	-	-	1014-0105 ⁵	-	140014
250 SXF	07-09	1011-0927	-	1011-0928	-	1011-1974	-	1011-2449	1014-0035	0712-0134
		-	-	-	-	-	-	1014-0105 ⁵	-	-
250 SX	07-09	1011-0927	-	1011-0928	-	1011-1320	-	1011-2449	1014-0035	-
		-	-	-	-	-	-	1014-0105 ⁵	-	-
250 XC	08-09	1011-0927	-	1011-0928	-	1011-1320	-	1011-2449	1014-0035	-
250 SX/SXS-F, XC, XCF-W, EXC	2010	1011-1927	-	1011-1917	-	1011-1974	-	1011-2449	1014-0035	0712-0134
		-	-	-	-	-	-	1014-0105 ⁵	-	-
250 XC-W	10-11	1011-1927	-	1011-1917	-	1011-1974	-	1011-2449	1014-0035	0712-0134
250 SX/XC	11-16	1011-2299	-	1011-2300	-	-	-	1011-2301	1014-0094	-
		-	-	-	-	-	-	1011-4142 ⁶	-	-
250 SX/XC/XC-W 2-strk	17-18	1011-3338	-	1011-3339	1011-3518	1011-3517	-	1011-3340	1014-0224	-
		-	-	-	-	-	-	1011-4143 ⁶	-	-
250 SX/XC/XC-W 2-strk	19-20	1011-3338	-	1011-3339	1011-4275	1011-4274	-	1011-3340	1014-0224	-
250 XC-F/XCF-W	08-09	1011-0927	-	1011-0928	-	1011-1974	-	1011-0444	1014-0035	0712-0134
250 SX/SXS-F	11-12	1011-2299	-	1011-2300	-	-	-	1011-2301	1014-0094	0712-0134
		-	-	-	-	-	-	1011-4142 ⁶	-	-
250 SX-F 4-strk	13-15	1011-2299	-	1011-2300	-	-	-	1011-2301	1014-0094	0712-0133
		-	-	-	-	-	-	1011-4142 ⁶	-	-
250 SX-F 4-strk FACTORY Edition	2015	1011-3338	-	1011-3339	1011-3341	1011-3342	1011-4127	1011-3340	1014-0224	0712-0133
		-	-	-	-	-	-	1011-4143 ⁶	-	-
250 SX-F / XC-F	16-18	1011-3338	-	1011-3339	1011-3341	1011-3342	1011-4127	1011-3340	1014-0224	0712-0133
250 SX-F / XC-F / EXC-F	19-20	1011-3338	-	1011-3339	1011-4273	1011-4272	-	1011-3340	1014-0224	0712-0133
250 EXC 2-strk	2011	1011-1927	-	1011-1917	-	1011-1320	-	1011-2449	1014-0035	-
250 EXC-F 4strk	2011	1011-1927	-	1011-1917	-	1011-1974	-	1011-2449	1014-0035	0712-0134
250 EXC 2-strk	12-16	1011-2299	-	1011-2300	-	-	-	1011-2301	1014-0094	-
		-	-	-	-	-	-	1011-4142 ⁶	-	-
250 EXC-F 4strk	12-16	1011-2299	-	1011-2300	-	-	-	1011-2301	1014-0094	0712-0134
		-	-	-	-	-	-	1011-4142 ⁶	-	-
250 EXC-F	17-18	1011-3338	-	1011-3339	1011-3341	1011-3342	1011-4127	1011-3340	1014-0224	0712-0133
250 EXC & XC-W TPI	2018	1011-3338	-	1011-3339	1011-3518	1011-3517	-	1011-3340	1014-0224	-
250 EXC & XC-W TPI	19-20	1011-3338	-	1011-3339	1011-4275	1011-4274	-	1011-3340	1014-0224	-
250 XC-F	11-15	1011-2299	-	1011-2300	-	-	-	1011-2301	1014-0094	0712-0134
		-	-	-	-	-	-	1011-4142 ⁶	-	-
250 XCF-W	12-16	1011-2299	-	1011-2300	-	-	-	1011-2301	1014-0094	0712-0134
		-	-	-	-	-	-	1011-4142 ⁶	-	-
250F Freeride	2018	1011-4245	-	-	1011-3053	1011-3052	-	-	-	-
300 All	90-97	22626X	-	-	-	-	-	-	-	-
300 All	98-03	22509	-	1011-0586	-	-	-	1011-0444	160071	140013
		-	-	-	-	-	-	1014-0105 ⁵	-	140014
300 2-Stroke Models	04-07	154112	-	1011-0587	-	154210	-	1011-0444	160071	-
		-	-	-	-	-	-	1014-0105 ⁵	-	-
300 XC/XC-W	08-09	1011-0927	-	1011-0928	-	1011-1320	-	1011-2449	1014-0035	-
		-	-	-	-	-	-	1014-0105 ⁵	-	-
300 EXC 2-stroke	2011	1011-1927	-	1011-1917	-	1011-1320	-	1011-2449	1014-0035	-
300 XC	2010	1011-1927	-	1011-1917	-	1011-1320	-	1011-2449	1014-0035	-
300 XC-W / EXC	10-11	1011-1927	-	1011-1917	-	1011-1320	-	1011-2449	1014-0035	-
300 XC	11-16	1011-2299	-	1011-2300	-	-	-	1011-2301	1014-0094	-
300 XC-W / EXC 2-stroke	12-16	1011-2299	-	1011-2300	-	-	-	1011-2301	1014-0094	-
		-	-	-	-	-	-	1011-4142 ⁶	-	-
300 XC 2-stroke	17-18	1011-3338	-	1011-3339	1011-3518	1011-3517	-	1011-3340	1014-0224	-
		-	-	-	-	-	-	1011-4143 ⁶	-	-

¹⁻¹³ For all Notes: See page 17



OFFROAD



MODEL/DESCRIPTION	YEAR	STANDARD	BACKFIRE	PRE-OILED	POWERFLOW KIT + REPLACEMENT PARTS			GRAND PRIX /	AIRBOX	OIL
		FILTER	AIR FILTER	AIR FILTER	KIT #	FILTER #	PRE-OILED FILTER #	DUST COVERS	COVERS	FILTER
		#	#	#				#	#	#
KTM (CONT.)										
300 XC 2-stroke	19-20	1011-3338	-	1011-3339	1011-4275	1011-4274	-	1011-3340	1014-0224	-
300 EXC TPI	2018	1011-3338	-	1011-3339	1011-3518	1011-3517	-	1011-3340	1014-0224	-
300 EXC TPI	19-20	1011-3338	-	1011-3339	1011-4275	1011-4274	-	1011-3340	1014-0224	-
350	87-91	22507	-	1011-4421	-	-	-	-	-	-
350 LC-4	93-99	22508	-	-	-	-	-	-	-	-
350 SX-F/EXC-F/XC-F/XCF-W	11-15	1011-2299	-	1011-2300	-	-	-	1011-2301	1014-0094	0712-0133
350 XCF-W / EXC-F	2016	1011-2299	-	1011-2300	-	-	-	1011-2301	1014-0094	0712-0133
		-	-	-	-	-	-	1011-4142 ⁵	-	-
350 EXC-F	17-18	1011-3338	-	1011-3339	1011-3341	1011-3342	1011-4127	1011-3340	1014-0224	0712-0133
350 SX-F/XC-F	16-18	1011-3338	-	1011-3339	1011-3341	1011-3342	1011-4127	1011-3340	1014-0224	0712-0133
		-	-	-	-	-	-	1011-4143 ⁵	-	-
350 SX-F / XC-F / EXC-F	19-20	1011-3338	-	1011-3339	1011-4273	1011-4272	-	1011-3340	1014-0224	0712-0133
350 FreeRide Trial Bike	12-17	1011-3011	-	-	1011-3053	1011-3052	-	-	-	0712-0133
350 FreeRide Trial Bike	2018	1011-4245	-	-	1011-3053	1011-3052	-	-	-	-
360 All	95-97	22626X	-	-	-	-	-	-	-	-
380 All	98-03	22509	-	1011-0586	-	-	-	1011-0444	160071	-
		-	-	-	-	-	-	1014-0105 ⁵	-	-
400 LC-4	93-99	22508	-	-	-	-	-	-	-	-
400 LC-4	2000	22509	-	1011-0586	-	-	-	1011-0444	160071	140013
		-	-	-	-	-	-	1014-0105 ⁵	-	140014
400 LC-4 (1 hole)	01-03	22509	-	1011-0586	-	-	-	1011-0444	160071	140013
		-	-	-	-	-	-	1014-0105 ⁵	-	140014
400 LC-4 (3 holes)	01-04	154112	-	1011-0587	-	154212	-	1011-0444	160071	140013
		-	-	-	-	-	-	1014-0105 ⁵	-	140014
400 LC-4 Duke	97-04	154514	-	1011-0588	-	-	-	1011-0443	160069	-
400 XC-W	08-09	1011-0927	-	1011-0928	-	1011-1974	-	1011-2449	1014-0035	-
		-	-	-	-	-	-	1014-0105 ⁵	-	-
400 XC-W/EXC-F	10-11	1011-1927	-	1011-1917	-	1011-1974	-	1011-2449	1014-0035	0712-0133
		-	-	-	-	-	-	1014-0105 ⁵	-	-
440	94-95	22507	-	1011-4421	-	-	-	-	-	-
450 SX	03-06	154112	-	1011-0587	-	154212	-	1011-0444	160071	140013
		-	-	-	-	-	-	1014-0105 ⁵	-	140014
450 EXC/XC	03-07	154112	-	1011-0587	-	154212	-	1011-0444	160071	140013
		-	-	-	-	-	-	-	-	140014
450 SXF	07-09	1011-0927	-	1011-0928	-	1011-1974	-	1011-2449	1014-0035	0712-0133
		-	-	-	-	-	-	1014-0105 ⁵	-	-
450 EXC/XC-F	08-09	1011-0927	-	1011-0928	-	1011-1974	-	1011-2449	1014-0035	0712-0133
		-	-	-	-	-	-	1014-0105 ⁵	-	-
450 SX/SXF/EXC/XC-F	2010	1011-1927	-	1011-1917	-	1011-1974	-	1011-2449	1014-0035	0712-0133
450 EXC-F/XC-W	2011	1011-1927	-	1011-1917	-	1011-1974	-	1011-2449	1014-0035	0712-0133
450 SX-F/SXS-F/SMR	11-12	1011-2299	-	1011-2300	-	-	-	1011-2301	1014-0094	0712-0133
450 XC-W / EXC / EXC-F	12-16	1011-2299	-	1011-2300	-	-	-	1011-2301	1014-0094	0712-0134
450 SX-F/XC-F/SMR	13-15	1011-2299	-	1011-2300	-	-	-	1011-2301	1014-0094	0712-0134
450 SX-F 4-strk FACTORY Edition	2015	1011-3338	-	1011-3339	1011-3341	1011-3342	1011-4127	1011-3340	1014-0224	0712-0133
		-	-	-	-	-	-	1011-4143 ⁵	-	-
450 SX-F / XC-F	16-19	1011-3338	-	1011-3339	1011-3341	1011-3342	1011-4127	1011-3340	1014-0224	0712-0133
		-	-	-	-	-	-	1011-4143 ⁵	-	-
450 EXC-F	17-18	1011-3338	-	1011-3339	1011-3341	1011-3342	1011-4127	1011-3340	1014-0224	0712-0133
		-	-	-	-	-	-	1011-4143 ⁵	-	-
450 SX-F / XC-F / EXC-F	19-20	1011-3338	-	1011-3339	1011-4273	1011-4272	-	1011-3340	1014-0224	0712-0133
(450 EXC-F / Six Days: USA ONLY)	17-20	1011-3338	-	1011-3339	1011-3962	1011-3961	-	1011-3340	1014-0224	0712-0133
450 Rally	12-18	1011-1658	-	-	-	-	-	-	-	-
450 Rally	2019	1011-4410	-	1011-4411	-	-	-	-	-	-

¹⁻¹³ For all Notes: See page 17



MODELLE / APPLICATIONS / APLICACIONES / APPLICAZIONI

FITMENTS



MODEL/DESCRIPTION	YEAR	STANDARD	BACKFIRE	PRE-OILED	POWERFLOW KIT			GRAND PRIX /	AIRBOX	OIL
		FILTER	AIR FILTER	AIR FILTER	+ REPLACEMENT PARTS	PRE-OILED	DUST COVERS	COVERS	FILTER	
		#	#	#	KIT #	FILTER #	FILTER #	#	#	#
KTM (CONT.)										
500	82-97	22507	-	-	-	-	-	-	-	-
500 LC-4	87-92	22624	-	-	-	-	-	-	-	-
500 EXC/XC-w 4-stroke/EXC-F	12-16	1011-2299	-	1011-2300	-	-	-	1011-2301	1014-0094	0712-0134
500 EXC-F	17-19	1011-3338	-	1011-3339	1011-3962	1011-3961	-	1011-3340	1014-0224	0712-0134
		-	-	-	-	-	-	1011-4143 ⁵	-	-
505 XC-F	08-09	1011-0927	-	1011-0928	-	1011-1974	-	1011-2449	1014-0035	0712-0133
		-	-	-	-	-	-	1014-0105 ⁵	-	-
505 XC-F	2010	1011-1927	-	1011-1917	-	1011-1974	-	1011-2449	1014-0035	0712-0133
520 LC-4	2000	22509	-	1011-0586	-	-	-	1011-0444	160071	140013
		-	-	-	-	-	-	1014-0105 ⁵	-	140014
520 LC-4 (1 hole)	01-02	22509	-	1011-0586	-	-	-	1011-0444	160071	140013
		-	-	-	-	-	-	1014-0105 ⁵	-	140014
520 LC-4 (3 holes)	01-02	154112	-	1011-0587	-	154212	-	1011-0444	160071	140013
		-	-	-	-	-	-	1014-0105 ⁵	-	140014
525 LC-4 (1 hole)	2003	22509	-	1011-0586	-	-	-	1011-0444	160071	140013
		-	-	-	-	-	-	1014-0105 ⁵	-	140014
525 LC-4 (3 holes)	03-06	154112	-	1011-0587	-	154212	-	1011-0444	160071	140013
		-	-	-	-	-	-	1014-0105 ⁵	-	140014
530 EXC	06-07	154112	-	1011-0587	-	154212	-	1011-0444	160071	140013
		-	-	-	-	-	-	1014-0105 ⁵	-	140014
530 XC-W/EXC	08-09	1011-0927	-	1011-0928	-	1011-1974	-	1011-2449	1014-0035	140013
		-	-	-	-	-	-	1014-0105 ⁵	-	140014
530 XC-W/EXC-F	10-11	1011-1927	-	1011-1917	1011-0929	1011-1974	-	1011-2449	1014-0035	140013
		-	-	-	-	-	-	-	-	140014
540	87-95	22507	-	1011-4421	-	-	-	-	-	140013
		-	-	-	-	-	-	-	-	140014
550	87-95	22507	-	1011-4421	-	-	-	-	-	-
560 SMR	06-07	154112	-	1011-0587	-	154212	-	1011-0444	160071	-
450/560 SMR	08-09	1011-0927	-	1011-0928	-	1011-1974	-	1011-0444	1014-0035	140013
		-	-	-	-	-	-	1014-0105 ⁵	-	140014
450/560 SMR	2010	1011-1927	-	1011-1917	-	1011-1974	-	1011-0444	1014-0035	140013
		-	-	-	-	-	-	-	-	140014
600 LC-4	87-92	22624	-	-	-	-	-	-	-	-
600 LC-4	93-99	22508	-	-	-	-	-	-	-	-
620 LC-4	94-99	22508	-	-	-	-	-	-	-	-
620/625 LC-4 Duke	97-06	154514	-	1011-0588	-	-	-	1011-0443	160069	-
640 LC-4 Duke	99-10	154514	-	1011-0588	-	-	-	1011-0443	160069	-
640 Adventure	08-10	154514	-	1011-0588	-	-	-	1011-0443	160069	-
640 LC4 Supermoto	08-10	22508	-	-	-	-	-	-	-	-
625/660SMC	08-10	154112	-	1011-0587	-	-	-	1011-0444	160071	140013
		-	-	-	-	-	-	1014-0105 ⁵	-	140014
640 Duke	08-10	22508	-	-	-	-	-	-	-	-
450/660 Rally Factory Replica	98-10	1011-1658	-	-	-	-	-	-	-	-
660 Rally	01-07	1011-1658	-	-	-	-	-	-	-	-
690 Rally	07-10	1011-1658	-	-	-	-	-	-	-	-
690 Enduro R / Supermoto	08-19	1011-3960	-	-	-	1011-3959	-	-	-	-
<i>Must have 1011-3960 first ¹⁰</i>		-	-	-	-	1011-3959	-	-	-	-
790 Adventure	2019	-	-	1904-0235	1011-4432	1011-4431	-	-	-	-
1050/1090 Adventure	15-16	-	-	-	1011-4236	1011-4235	-	-	-	-
1090 Adventure/1090 Adventure L/R, 1290 SuperDuke GT	16-18	-	-	-	1011-4236	1011-4235	-	-	-	-
1290 SuperDuke R, 1290 Super Adventure/1290 SuperAdventure T	15-18	-	-	-	1011-4236	1011-4235	-	-	-	-

¹⁻¹³ For all Notes: See page 17



OFFROAD



MODEL/DESCRIPTION	YEAR	STANDARD	BACKFIRE	PRE-OILED	POWERFLOW KIT			GRAND PRIX /	AIRBOX	OIL
		FILTER	AIR FILTER	AIR FILTER	+ REPLACEMENT PARTS	DUST COVERS	COVERS	FILTER		
		#	#	#	KIT #	FILTER #	PRE-OILED FILTER #	#	#	#
KTM (CONT.)										
1290 Super Adventure R/S	17-18	-	-	-	1011-4236	1011-4235	-	-	-	-
<i>Must have 1011-4236 first ¹</i>										
LEM										
50cc R2/R3	03-10	1011-0643	-	-	-	-	-	-	-	-
RX3 50cc	07-10	1011-0643	-	-	-	-	-	-	-	-
MAICO										
ALL	Thru 79	1011-2382	-	-	-	-	-	-	-	-
ALL	80-81	1011-2383	-	-	-	-	-	-	-	-
ALL	98-02	22508	-	-	-	-	-	-	-	-
MONTESA										
Cota 4RT260	16-17	-	1011-2459	-	-	-	-	-	-	-
Cota 300RR	05-17	-	1011-2459	-	-	-	-	-	-	-
Cota 314	97-01	-	1011-2459	-	-	-	-	-	-	-
Cota 315	97-01	1011-2385	-	-	-	-	-	-	-	-
Cota 314R/315R/4 Stroke	07-10	-	-	-	-	1011-2459	-	-	-	-
SCORPA										
Scorpa Trial 125/250/290/300	15-16	1011-4288	-	-	-	-	-	-	-	-
SHERCO										
Sherco 0.8	04-10	1011-2381	-	-	-	-	-	-	-	-
Sherco 1.25/2.0/2.9	00-10	1011-2381	-	-	-	-	-	-	-	-
Sherco 2.5	99-10	1011-2381	-	-	-	-	-	-	-	-
Sherco 3.2	05-10	1011-2381	-	-	-	-	-	-	-	-
Sherco Trial 125ST/250ST/300ST	15-20	1011-4288	-	-	-	-	-	-	-	-
Sherco Enduro 2strk SE 125/250T/SE300T	14-20	1011-4422	-	1011-3663	-	-	-	-	1011-2934	-
Sherco 450 Enduro 4strk	04-13	-	1011-2852	-	-	1011-2852	-	-	-	-
Sherco 510 Enduro 4strk	06-13	-	1011-2852	-	-	1011-2852	-	-	-	-
Sherco Enduro 250/300 4strk SEF/R	12-13	-	1011-2852	1011-2952 ¹	-	1011-2853	-	-	1011-2934	-
Sherco 450/510 Enduro 4strk SEF/R	13-14	-	1011-2852	1011-2952 ¹	-	1011-2853	-	-	1011-2934	-
SUZUKI										
JR 50	78-07	151799	-	-	-	-	-	-	-	-
RM65	03-06	153010	-	-	-	-	-	-	-	-
RM80, RM85/85L	86-20	22407	-	1011-0582	-	-	-	-	22963	-
DRZ-110	02-06	153051	-	-	-	-	-	-	-	-
DRZ-125/L	03-20	153052	-	-	-	-	-	-	-	140005
DR 125	94-96	1011-2307	-	1011-4420	-	-	-	-	-	-
RM125	87-92	22650	-	-	-	-	-	-	160076	-
RM125	93-95	22652	-	-	-	-	-	-	-	-
RM125	96-01	22653	-	-	-	-	-	-	22957	-
RM125	02-03	153214	-	-	-	-	-	-	22957	-
RM125	04-08	153215	-	1011-0583	-	153215	-	1011-0447	160080	-
TS125R	89-02	1011-2374	-	-	-	-	-	-	-	-
TS200R	All	1011-2374	-	-	-	-	-	-	-	-
DR200 SE	96-09	1011-2307	-	1011-4420	-	-	-	-	-	-
DR250	90-94	22010	-	-	-	-	-	-	-	-
RM250	87-92	22650	-	-	-	-	-	-	160076	-
RM250	93-95	22652	-	-	-	-	-	-	-	-
RM250	96-01	22653	-	-	-	-	-	-	22957	-
RM250	2002	153214	-	-	-	-	-	-	22957	-
RM250	03-12	153215	-	1011-0583	-	153215	-	1011-0447	160080	-
RMZ250	04-06	1011-0012	-	1011-0585	-	-	-	-	1014-0002	0712-0031
RMZ250	07-18	153215	-	1011-0583	1011-0426	1011-0427 ¹	1011-0584 ¹	1011-0447	160080	0712-0031
RMZ250	19-20	1011-3986	-	1011-4413	1011-3989	1011-3985	-	-	1011-3988	0712-0031
RMX250	89-98	-	-	-	-	-	-	1011-0448	160076	-

¹⁻³ For all Notes: See page 17



MODELLE / APPLICATIONS / APLICACIONES / APPLICAZIONI

FITMENTS



MODEL/DESCRIPTION	YEAR	STANDARD	BACKFIRE	PRE-OILED	POWERFLOW KIT			GRAND PRIX /	AIRBOX	OIL
		FILTER	AIR FILTER	AIR FILTER	+ REPLACEMENT PARTS	REPLACEMENT PARTS	DUST COVERS	COVERS	FILTER	
		#	#	#	KIT #	FILTER #	PRE-OILED FILTER #	#	#	#
SUZUKI (CONT.)										
DR350	90-99	22010	-	-	-	-	-	-	-	-
DRZ400 / S / SM	00-19	153156	-	-	-	1011-0233 ¹	-	1011-0448	-	140007
RMZ450	05-17	153215	-	1011-0583	1011-0426	1011-0427 ¹	1011-0584 ¹	1011-0447	160080	0712-0031
RMZ450	18-20	1011-3986	-	1011-4413	1011-3989	1011-3985	-	-	1011-3988	0712-0031
RMX 450	10-19	1011-1913	-	1011-1914	-	-	-	-	-	0712-0031
DR600	All	1011-2375	-	-	-	-	-	-	-	-
DR650S	90-95	1011-2376	-	-	-	-	-	-	-	-
DR650S / SE	96-17	1011-2313	-	-	-	-	-	-	-	-
SWM										
RS / SM 300, RS / SM 500	15-19	22804	-	-	-	-	-	1011-2455	160085	-
RS / SM / SD 650	17-19	155506	-	-	-	-	-	-	-	-
TM										
80/85/100 Junior	95-07	1011-2395	-	-	-	-	-	-	-	-
80/85/100 Junior	08-12	1011-2397	-	-	-	-	-	-	1011-3085	-
80/85/100 Junior	13-18	1011-3016	-	-	-	-	-	-	1011-3085	-
125/144/250/300 MX/Enduro 2-strk	95-07	1011-2395	-	-	-	-	-	-	-	-
125/144/250/300 MX/Enduro 2-strk	08-12	1011-2397	-	-	-	-	-	-	1011-3085	-
125/144/250/300 MX/Enduro 2-strk	13-14	1011-3017	-	-	-	-	-	-	1011-3085	-
125/144/250/300 MX/Enduro 2-strk	15-18	1011-3510	-	1011-4130	-	-	-	-	1011-3085	-
250/300 2-stroke	19-20	1011-4290	-	-	-	-	-	-	1011-4338	-
250F/400F/450F/530F MX/Enduro 4-strk	01-12	1011-2397	-	-	-	-	-	-	-	-
250Fi/450Fi/530F MX/Enduro E-start	13-14	1011-3016	-	-	-	-	-	-	1011-3085	-
250Fi/450Fi/530F MX/End 4 strk Kick start	13-14	1011-3017	-	-	-	-	-	-	1011-3085	-
250Fi/450Fi/530F MX/End 4 strk	15-18	1011-3511	-	-	-	-	-	-	1011-3594	-
125/250/300 Enduro 2-strk, 250/450 MX 4-strk	13-14	1011-3017	-	-	-	-	-	-	-	-
MX/Enduro 125/250/300 2-stroke	15-18	1011-3510	-	1011-4130	-	-	-	-	-	-
MX/Enduro 250/450 Fi 4-stroke	15-18	1011-3511	-	-	-	-	-	-	1011-3594	-
Rally 450	14-18	1011-3511	-	-	-	-	-	-	-	-
YAMAHA										
PW50	92-20	1011-0227	-	-	-	-	-	-	-	-
TTR50	06-20	1011-0644	-	-	-	-	-	-	-	-
PW80	91-07	1011-0228	-	-	-	-	-	-	-	-
YZ65	18-20	1011-4194	-	1011-4414	-	-	-	1011-4415	1011-4195	-
YZ80	93-01	22632	-	-	-	-	-	-	22964	-
YZ85	02-20	152012	-	1011-0578	-	-	-	1011-0449	22964	-
TT-R90	00-07	152379	-	-	-	-	-	-	-	-
TT-R110	all	1011-1915	-	-	-	-	-	-	-	-
DT125	88-95	1011-2369	-	-	-	-	-	-	-	-
TT-R125	00-20	152382	-	-	-	-	-	-	-	-
YZ125	1983	1011-2368	-	-	-	-	-	-	-	-
YZ125	87-88	22630	-	-	-	-	-	-	-	-
YZ125	89-92	22000	-	-	-	-	-	-	22955	-
YZ125	93-94	22001	-	-	-	-	-	-	22955	-
YZ125	95-96	22002	-	-	-	-	-	-	22955	-
YZ125	97-20	22633	-	1011-0579	152213C	22633	-	1011-0450	22955	-
DT200	89-96	22003	-	-	-	-	-	-	-	-
TT-R225	99-04	-	-	-	-	-	-	-	-	140009
WR200	91-93	22003	-	-	-	-	-	-	-	-
TT250R	All	-	-	-	-	-	-	-	-	140008
YZ250	82-83	1011-2368	-	-	-	-	-	-	-	-
YZ250	1987	22630	-	-	-	-	-	-	-	-
YZ250	89-92	22000	-	-	-	-	-	-	22955	-

¹⁻¹⁹ For all Notes: See page 17



OFFROAD



MODEL/DESCRIPTION	YEAR	STANDARD FILTER	BACKFIRE AIR FILTER	PRE-OILED AIR FILTER	POWERFLOW KIT + REPLACEMENT PARTS			GRAND PRIX / DUST COVERS	AIRBOX COVERS	OIL FILTER
		#	#	#	KIT #	FILTER #	PRE-OILED FILTER #	#	#	#
YAMAHA (CONT.)										
YZ250	93-94	22001	-	-	-	-	-	-	22955	-
YZ250	95-96	22002	-	-	-	-	-	-	22955	-
YZ250	97-20	22633	-	1011-0579	152213C	22633	-	1011-0450	22955	-
		-	-	-	-	-	-	1011-4144 ⁵	-	-
YZ250F	01-13	22633	-	1011-0579	-	152313	1011-0581	1011-0450	22955	140017
Airbox Kit ¹²		-	-	-	1011-3895	1011-3896	-	1011-4144 ⁵	-	-
YZ250F	19-20	1011-4034	1011-4037	1011-4316	-	-	-	-	1011-4039	140017
Airbox Cover ¹³		-	-	-	1011-4038	1011-4037	1011-4419	-	1011-4040 ⁷	-
YZ 250 X	16-20	22633	-	1011-0579	152213C	22633	-	1011-0450	22955	-
TTR250	99-06	152384	-	-	-	-	-	-	-	140008
WR250	89-97	22000	-	-	-	-	-	-	22955	-
WR250F	01-02	22633	-	1011-0579	-	152313	-	1011-0450	22955	140008
		-	-	-	-	-	-	1011-4144 ⁵	-	-
WR250F	03-14	152215	-	1011-0580	-	1011-0014 ¹	-	1011-0451	1014-0003	140017
YZ250FX	15-20	1011-3130	-	1011-3131	1011-3165	1011-3164	1011-3813	-	1011-3132	140017
Airbox Kit ¹²		-	-	-	1011-3895	1011-3896	-	-	-	-
WR 250R / X Street Model	08-20	152384	-	-	-	-	-	-	-	140017
WR250F	15-20	1011-3130	-	1011-3131	1011-3165	1011-3164	1011-3813	-	1011-3132	140017
Airbox Kit ¹²		-	-	-	1011-3895	1011-3896	-	-	-	-
WR/YZ400F	98-99	22633	-	1011-0579	-	152313	1011-0581	1011-0450	22955	140008
		-	-	-	-	-	-	1011-4144 ⁵	-	-
WR/YZ426F	00-02	22633	-	1011-0579	-	152313	1011-0581	1011-0450	22955	140008
		-	-	-	-	-	-	1011-4144 ⁵	-	-
YZ450F	03-09	22633	-	1011-0579	-	152313	1011-0581	1011-0450	22955	140017
		-	-	-	-	-	-	1011-4144 ⁵	-	-
YZ450F	10-13	1011-1911	-	1011-1912	-	1011-2048 ¹	-	-	1010-0813	140017
YZ450F	14-17	1011-3130	-	1011-3131	1011-3165	1011-3164	1011-3813	-	1011-3132	140017
Airbox Kit ¹²		-	-	-	1011-3895	1011-3896	-	-	-	-
YZ450F	18-20	1011-4034	1011-4037	1011-4316	-	-	-	-	1011-4039	140017
Airbox Cover ¹³		-	-	-	1011-4038	1011-4037	-	-	1011-4040 ⁷	-
YZ450FX	17-18	1011-3130	-	1011-3131	1011-3165	1011-3164	1011-3813	-	1011-3132	140017
Airbox Kit ¹²		-	-	-	1011-3895	1011-3896	-	-	-	-
YZ450FX	19-20	1011-4034	-	1011-4316	-	-	-	-	1011-4039	140017
Airbox Cover ¹³		-	-	-	1011-4038	1011-4037	1011-4419	-	1011-4040 ⁷	-
WR450F	03-12	152215	-	1011-0580	-	1011-0014 ¹	-	1011-0451	1014-0003	140017
WR450F	16-18	1011-3130	-	1011-3131	1011-3165	1011-3164	1011-3813	-	1011-3132	140017
Airbox Kit ¹²		-	-	-	1011-3895	1011-3896	-	-	1011-4040 ⁷	-
WR450F	19-20	1011-4034	-	1011-4316	-	-	-	-	1011-4039	140017
Airbox Cover ¹³		-	-	-	1011-4038	1011-4037	-	-	1011-4040 ⁷	-
YZ490	82-83	1011-2368	-	-	-	-	-	-	-	-
YZ490	87-90	22630	-	-	-	-	-	-	-	-
WR500	91-93	22000	-	-	-	-	-	-	-	-
XT500 rubber.57	All	1011-2370	-	-	-	-	-	-	-	-
XT500 rubber.63	All	1011-2371	-	-	-	-	-	-	-	-
XT600	All	1011-2373	-	-	-	-	-	-	-	-
YZX 1000R	16-17	1011-3831	-	-	-	-	-	-	-	-

¹⁻¹³ For all Notes: See page 17

NOTES:
¹ Backfire Filter ² PowerFlow kit w/ inner ring ³ Supercross Filter ⁴ Supermoto Filter ⁵ GP dust cover ⁶ Rain coat ⁷ for Powerflow Kit
⁸ 150601C comes with a PLASTIC filter cage and std. Dual Stage Filter ⁹ 1011-3938 comes with (2 pcs) Pre-Oiled Air Filters (FR) + (2 pcs) plastic Filter Frames
¹⁰ 1011-3960 comes with Pre-Oiled Air Filter (FR) + plastic Filter Frame ¹¹ 1011-4236 comes with Orange filter frame, and Pre Oiled filter
¹² 1011-3895 Airbox Kit Yamaha YZ250F YZ450F 14/2016 WR250F 15/2016 WR450F 16 (incl. Air Filter BIG (FR), Airbox Lid, Aluminium Cage, Aluminum Sealing Ring, Bolt 50mm, Spacer 14mm, Mounting Hardware)
¹³ 1011-4040 will only work with PowerFlow kit 1011-4038



MODELLE / APPLICATIONS / APLICACIONES / APPLICAZIONI

FITMENTS



MODEL/DESCRIPTION	YEAR	STANDARD FILTER	BACKFIRE AIR FILTER	PRE-OILED AIR FILTER	POWERFLOW KIT + REPLACEMENT PARTS			GRAND PRIX / DUST COVERS	AIRBOX COVERS	OIL FILTER
		#	#	#	KIT #	FILTER #	PRE-OILED FILTER #	#	#	#
ARCTIC CAT/TEXTRON										
DVX 90	06-18	1011-1945	-	-	-	-	-	-	-	-
Utility 90	16-20	1011-1945	-	-	-	-	-	-	-	-
Utility 366	04-07	1011-1947	-	-	-	-	-	-	-	-
DVX 400	03-08	153908	-	-	-	-	-	-	-	140007
Utility 400 4x4/Auto TBX	2004	-	-	-	-	1011-2336	-	-	-	140006
Utility 400	05-11	1011-1947	-	-	-	-	-	-	-	140006
TRV 400	09-14	1011-1947	-	-	-	-	-	-	-	140006
450	10-12	1011-3991	-	-	-	1011-3990	-	-	-	-
450 TRV	11-12	1011-3991	-	-	-	1011-3990	-	-	-	-
500 TRV, FIS, TBX models	03-05	-	-	-	-	1011-2336	-	-	-	140006
Utility 500	06-09	1011-1947	-	-	-	-	-	-	-	140006
500 / TRV	13-17	1011-3991	-	-	-	1011-3990	-	-	-	-
550 H1 EFI/XT/TRV	08-15	1011-1648	-	-	-	-	-	-	-	-
Utility 650	04-12	1011-1947	-	-	-	-	-	-	-	140015
650 H1 EFI	08-12	1011-1648	-	-	-	-	-	-	-	-
EFI 700 Utility	06-08	1011-1647	-	-	-	-	-	-	-	-
700 H1 EFI/TBX/XT/TRV/Mudpro	09-17	1011-1648	-	-	-	-	-	-	-	-
1000 XT/TRV/Mudpro	08-17	1011-1647	-	-	-	-	-	-	-	-
1000 Wildcat XX	18-20	1011-4319	-	-	-	-	-	-	-	-
BOMBARDIER/CAN-AM										
DS 70	08-19	1011-2337 ⁹	-	-	-	-	-	-	-	-
DS 90 / 90 X	08-19	1011-2337 ⁹	-	-	-	-	-	-	-	-
Outlander 400 EFI	03-07	-	-	-	-	1011-1952	-	-	-	0712-0289
Outlander 400 Std./XT	2008	-	-	-	-	1011-1952	-	-	-	0712-0289
Outlander 400 EFI Std./XT	08-09	-	-	-	-	1011-2338	-	-	-	0712-0289
Outlander 400	08-14	-	-	-	-	1011-2338	-	-	-	0712-0289
DS 450	08-14	-	-	-	-	1011-1953	-	-	-	-
DS 450 XC/MX	09-15	-	-	-	-	1011-1953	-	-	-	-
Outlander L 450/500	15-19	1011-2776 ¹⁰	-	-	-	1011-2778	1011-2777	-	-	-
Renegade 500	08-12	-	-	-	-	1011-2339	1011-2340	-	-	0712-0289
Renegade 500	13-15	1011-2776 ¹⁰	-	-	-	1011-2778	1011-2777	-	-	-
<i>Dry Replacement filter: must have 1011-2776 first</i>		-	-	-	-	1011-2778	1011-2777	-	-	-
Outlander 500	07-12	-	-	-	-	1011-2339	1011-2340	-	-	0712-0289
Outlander 650	07-09	-	-	-	-	1011-2339	1011-2340	-	-	0712-0289
Outlander 650	10-12	1011-1924 ⁸	-	-	-	1011-2826	1011-1925	1011-2342	-	0712-0289
<i>Dry Replacement filter: must have 1011-1924 first</i>		-	-	-	-	1011-2826	1011-1925	-	-	-
Outlander 500/650	13-18	1011-2776 ¹⁰	-	-	-	1011-2778	1011-2777	-	-	-
<i>Dry Replacement filter: must have 1011-2776 first</i>		-	-	-	-	1011-2778	1011-2777	-	-	-
Outlander/Renegade 570	16-19	1011-2776 ¹⁰	-	-	-	1011-2778	1011-2777	-	-	-
<i>Dry Replacement filter: must have 1011-2776 first</i>		-	-	-	-	1011-2778	1011-2777	-	-	-
DS 650	00-06	1011-1954 ¹⁷	-	-	-	-	-	-	-	0712-0289
Outlander 800	06-08	-	-	-	-	1011-2339	1011-2340	-	-	0712-0289
Renegade 800	07-08	-	-	-	-	1011-2339	1011-2340	-	-	0712-0289
Outlander 800 Max EFI	09-12	1011-1924 ⁸	-	-	-	-	1011-1925	1011-2342	-	0712-0289
<i>Must have 1011-1924 first</i>		-	-	-	-	-	1011-1925	-	-	-
Outlander 800R EFI	09-11	1011-1924 ⁸	-	-	-	-	1011-1925	1011-2342	-	0712-0289
<i>Must have 1011-1924 first</i>		-	-	-	-	-	1011-1925	-	-	-
Outlander X mr 800R	2012	1011-1924 ⁸	-	-	-	-	1011-1925	1011-2342	-	0712-0289
<i>Must have 1011-1924 first</i>		-	-	-	-	-	1011-1925	-	-	-
Renegade 800R	09-11	1011-1924 ⁸	-	-	-	-	1011-1925	1011-2342	-	0712-0289
<i>Dry Replacement filter: must have 1011-1924 first</i>		-	-	-	-	1011-2826	1011-1925	-	-	-
Outlander / Renegade 800 / 850 R	12-19	1011-2776 ¹⁰	-	-	-	-	1011-2777	-	-	-
<i>Dry Replacement filter: must have 1011-2776 first</i>		-	-	-	-	1011-2778	1011-2777	-	-	-

¹⁻¹⁸ For all Notes: See page 23



ATV / UTV



MODEL/DESCRIPTION	YEAR	STANDARD FILTER	BACKFIRE AIR FILTER	PRE-OILED AIR FILTER	POWERFLOW KIT + REPLACEMENT PARTS			GRAND PRIX / DUST COVERS	AIRBOX COVERS	OIL FILTER
		#	#	#	KIT #	FILTER #	PRE-OILED FILTER #	#	#	#
BOMBARDIER/CAN-AM (CONT.)										
Maverick X3 900HO	2018	1011-4036	-	-	-	-	-	-	-	-
<i>Must have 1011-4036 first</i>		-	-	-	-	-	-	-	-	-
Outlander / Renegade 1000R	12-19	1011-2776 ¹⁰	-	-	-	1011-2778	1011-2777	-	-	-
<i>Dry Replacement filter: must have 1011-2776 first</i>		-	-	-	-	1011-2778	1011-2777	-	-	-
Outlander 500/650/800/850/1000 MAX	13-19	1011-2776 ¹⁰	-	-	-	1011-2778	1011-2777	-	-	-
<i>Dry Replacement filter: must have 1011-2776 first</i>		-	-	-	-	1011-2778	1011-2777	-	-	-
Commander / MAX 800/1000	11-18	1011-3089 ¹¹	-	-	-	-	1011-3090	-	-	-
<i>Must have 1011-3089 first</i>		-	-	-	-	-	1011-3090	-	-	-
Maverick 1000	13-18	1011-3089 ¹¹	-	-	-	-	1011-3090	-	-	-
<i>Must have 1011-3089 first</i>		-	-	-	-	-	1011-3090	-	-	-
Maverick MAX NON-Turbo	14-18	1011-3089 ¹¹	-	-	-	-	1011-3090	-	-	-
<i>Must have 1011-3089 first</i>		-	-	-	-	-	1011-3090	-	-	-
Maverick 1000 / X / MAX Turbo	15-16	1011-4319	-	-	-	-	-	-	-	-
Outlander 6x6s 650/1000 XT	15-18	1011-2776 ¹⁰	-	-	-	1011-2778	1011-2777	-	-	-
Maverick XDS/ Max 1000R Turbo	16-18	1011-4319	-	-	-	-	-	-	-	-
Maverick X3/ X3 MAX	17-19	1011-4036	-	-	-	1011-4035	-	-	-	-
<i>Must have 1011-4036 first</i>		-	-	-	-	1011-4035	-	-	-	-
Storm/Defender	2018	-	-	-	1011-4416	-	-	-	-	-
HONDA										
90 TRX/Four Trax	01-20	150319	-	-	-	-	-	-	-	-
250 ATC air cooled	83-84	1011-2363	-	-	-	-	-	-	-	-
250 ATC liquid cooled	85-88	22606	-	-	-	-	-	-	-	-
250 TRX	86-89	22605	-	-	-	-	-	-	-	-
250 Recon	97-20	150918	-	-	-	-	-	-	-	140002
250 TRX/EX/X/Sportrax	01-20	150919	-	-	-	-	-	-	-	140002
300 TRX	88-91	150910	-	1011-1083	-	-	-	-	-	140002
300 TRX	95-00	150910	-	1011-1083	-	-	-	-	-	140002
300 EX/X	93-09	150915	-	-	-	-	-	-	-	140002
350 Rancher/ES	00-06	150912	-	-	-	-	-	-	-	140002
350 TRX	86-90	-	-	-	-	-	-	-	-	140002
400 EX/X	99-14	150920 ¹⁶	-	1011-1086	-	-	-	-	-	140002
400 TRX	99-14	150920 ¹⁶	-	1011-1086	-	-	-	-	-	140002
400 Foreman	98-04	150910	-	1011-1083	-	-	-	-	-	140002
400 Rancher/4WD	04-07	150912	-	-	-	-	-	-	-	140000
420 Rancher	07-13	1011-1957	-	-	-	-	-	-	-	140002
420 Rancher	14-20	150924	-	-	-	-	-	-	-	140002
450 Foreman S/ES	98-06	150910	-	1011-1083	-	-	-	-	-	140002
450 TRX	04-05	1011-0287	-	-	-	-	-	-	-	140003
450 TRX	06-14	1011-0779 ^{2, 16}	-	-	1011-0917 ³	1011-2366	-	-	22963	140003
<i>450 TRX replacement (must have 1011-0779 first)</i>		-	-	-	-	1011-1958	-	-	-	-
500 Rubicon/Foreman	01-04	-	-	-	-	-	-	-	-	140000
500 Rubicon/Foreman	05-20	150924	-	-	-	-	-	-	-	140000
500 / 700 Pioneer SXS	15-20	150924	-	-	-	-	-	-	-	140000
650/675 Rincon	03-20	150924	-	-	-	-	-	-	-	140000
700 TRX	08-09	1011-1510	-	1011-1511	-	-	-	-	-	-
KAWASAKI										
50 KFX	03-06	151799	-	-	-	-	-	-	-	-
220 Bayou	88-02	-	-	-	-	-	-	-	-	140004
250 Bayou	03-12	-	-	-	-	-	-	-	-	140004
250 Mojave	87-04	22968	-	-	-	-	-	-	-	140004
300 Bayou/ 4X4	89-03	151910 ¹⁷	-	1011-1094	-	-	-	-	-	140004
300 Lakota Sport	95-04	22968	-	-	-	-	-	-	-	140004
300 Prairie / 4X4	93-03	151910 ¹⁷	-	1011-1094	-	-	-	-	-	140016

¹⁻¹⁸ For all Notes: See page 23



MODELLE / APPLICATIONS / APLICACIONES / APPLICAZIONI

FITMENTS



MODEL/DESCRIPTION	YEAR	STANDARD FILTER	BACKFIRE AIR FILTER	PRE-OILED AIR FILTER	POWERFLOW KIT + REPLACEMENT PARTS			GRAND PRIX / DUST COVERS	AIRBOX COVERS	OIL FILTER
		#	#	#	KIT #	FILTER #	PRE-OILED FILTER #	#	#	#
KAWASAKI (CONT.)										
300 Brute Force	12-20	-	-	-	-	-	-	-	-	140004
360 Prairie	02-13	151912	-	-	-	-	-	-	-	140015
400 Bayou / 4X4	99-01	151910 ¹⁷	-	1011-1094	-	-	-	-	-	140016
400 Prairie / 4X4	97-04	151910 ¹⁷	-	1011-1094	-	-	-	-	-	140016
400 KFX	03-06	151801 ¹⁶	-	-	-	1011-1985	-	-	-	140007
450 KFX	07-14	1011-1080	-	-	-	-	-	-	-	140001
650 Prairie	2002	151911	-	-	-	-	-	-	-	140015
650 Prairie	2003	151913	-	1011-1095	-	-	-	-	-	140015
650 Brute Force 4X4	05-13	151913	-	1011-1095	-	-	-	-	-	140015
650 Brute Force 4X4i	06-13	1011-0778	-	1011-1090	-	-	-	-	-	140015
700 KFX V-Force	04-09	151913	-	1011-1095	-	-	-	-	-	140015
700 Prairie	04-06	151913	-	1011-1095	-	-	-	-	-	140015
750 Brute Force	05-07	1011-0778	-	1011-1090	-	-	-	-	-	140015
750 Brute Force/4x4i	08-20	1011-0778	-	1011-1090	-	-	-	-	-	140015
KTM										
450 SX	08-09	1011-0927	-	1011-0928	-	1011-1974	-	-	1014-0035	-
450 SX	10-11	1011-1927	-	1011-1917	-	1011-1974	-	-	1014-0035	-
450 XC	08-09	1011-0927	-	1011-0928	-	1011-1974	-	-	1014-0035	140013
		-	-	-	-	-	-	-	-	140014
450 XC	10-11	1011-1927	-	1011-1917	-	1011-1974	-	-	1014-0035	140013
		-	-	-	-	-	-	-	-	140014
505 SX	2009	1011-0927	-	1011-0928	-	1011-1974	-	-	1014-0035	-
505 SX	10-13	1011-1927	-	1011-1917	-	1011-1974	-	-	1014-0035	-
525 XC	08-09	1011-0927	-	1011-0928	-	1011-1974	-	-	1014-0035	140013
		-	-	-	-	-	-	-	-	140014
525 XC	10-13	1011-1927	-	1011-1917	-	1011-1974	-	-	1014-0035	140013
		-	-	-	-	-	-	-	-	140014
POLARIS										
50 Scrambler/Predator	01-06	156080	-	-	-	-	-	-	-	-
90 Sportsman/Predator/	01-06	156080	-	-	-	-	-	-	-	-
90 Sportsman/Outlaw	07-16	1011-3652	-	-	-	-	-	-	-	-
110 Sportsman/Outlaw	16-18	1011-3652	-	-	-	-	-	-	-	-
RZR 170	2009	1011-3652	-	-	-	-	-	-	-	-
200 Phoenix	06-17	-	-	-	-	1011-1961	-	-	-	-
250 Trailblazer	01-07	-	-	-	-	1011-1961	-	-	-	-
300 Hawkeye	05-07	-	-	-	-	-	-	-	-	140016
300 Hawkeye/Sportsman	05-09	-	-	-	-	1011-1961	-	-	-	-
325	00-03	22830	-	1011-1115	-	-	-	-	-	-
330 Magnum/4WD	03-05	22830	-	1011-1115	-	-	-	-	-	140016
330 Trail Boss/Trailblazer	03-13	22830	-	1011-1115	-	-	-	-	-	140016
335	98-00	22830	-	1011-1115	-	-	-	-	-	-
400 Scrambler/4X4	96-03	1011-2349	-	-	-	-	-	-	-	-
400L / Sport	96-99	1011-2349	-	-	-	-	-	-	-	-
400 Sportsman	01-05	22830	-	1011-1115	-	-	-	-	-	140016
400 Sportsman/Hawkeye/EXT	08-15	22830	-	1011-1115	-	-	-	-	-	-
400 Xplorer	99-00	1011-2349	-	-	-	-	-	-	-	-
400 Xplorer	01-02	-	-	-	-	1011-1961	-	-	-	-
400 4x4 Ranger	10-14	1011-2350 ¹⁴	-	-	-	1011-1966	-	-	-	140016
<i>Replacement filter: must have 1011-2350 first</i>										
425 Magnum	96-98	1011-2349	-	-	-	-	-	-	-	140016
425 Xpedition	00-03	22830	-	1011-1115	-	-	-	-	-	140016
450 Sportsman	06-07	22830	-	1011-1115	-	-	-	-	-	140016
450 Outlaw MXR	08-09	-	-	-	-	1011-1962	-	-	-	-

¹⁻¹⁸ For all Notes: See page 23



ATV / UTV



MODEL/DESCRIPTION	YEAR	STANDARD FILTER	BACKFIRE AIR FILTER	PRE-OILED AIR FILTER	POWERFLOW KIT + REPLACEMENT PARTS			GRAND PRIX / DUST COVERS	AIRBOX COVERS	OIL FILTER
		#	#	#	KIT #	FILTER #	PRE-OILED FILTER #	#	#	#
POLARIS (CONT.)										
450 Sportsman HO	16-19	1011-3662	-	-	-	-	-	-	-	-
500 Big Boss	98-99	1011-2349	-	-	-	-	-	-	-	-
500 Diesel	99-01	22830	-	1011-1115	-	-	-	-	-	-
500 Magnum	99-02	22830	-	1011-1115	-	-	-	-	-	140016
500 Predator	03-07	1011-2351 ¹³	-	-	-	156141	-	-	-	140001
<i>Must have 156141p</i>		-	-	-	-	156141	-	-	-	-
500 Scrambler 4x4	98-12	22830	-	1011-1115	-	-	-	-	-	140016
500 Sportsman	96-12	22830	-	1011-1115	-	-	-	-	-	-
500 Sportsman 6X6	00-12	22830	-	1011-1115	-	-	-	-	-	140016
500 Xplorer	1997	22830	-	1011-1115	-	-	-	-	-	140016
500 Outlaw	06-07	1011-1963 ^{12, 16}	-	-	-	-	-	-	-	140001
500 X2 EFI	06-07	22830	-	1011-1115	-	-	-	-	-	-
500 Sportsman HO/Touring	08-15	22830	-	-	-	-	-	-	-	140016
500 4x4 Ranger	06-14	1011-2350 ¹⁴	-	-	-	1011-1966	-	-	-	140016
<i>Replacement filter: must have 1011-2350 first</i>		-	-	-	-	1011-1966	-	-	-	-
525 IRS Outlaw	06-11	1011-1964	-	-	-	-	-	-	-	-
525 S Outlaw	08-09	-	-	-	-	1011-1962	-	-	-	140016
550 Sportsman STD/EPS / Touring	10-14	22830	-	1011-1115	-	-	-	-	-	-
550 X2 Sportsman	10-14	22830	-	1011-1115	-	-	-	-	-	-
550 XP/EPS EFI	09-11	1011-3660	-	-	-	1011-3659	-	-	-	-
<i>Must have 1011-3660 first</i>		-	-	-	-	1011-3659	-	-	-	-
570 Ranger RZR	12-17	-	-	-	1011-4418	-	-	-	-	-
570 Sportsman	15-19	1011-3662	-	-	-	-	-	-	-	-
570 Sportsman SP	15-19	1011-3662	-	-	-	-	-	-	-	-
700 Sportsman	02-07	22830	-	1011-1115	-	-	-	-	-	-
700 X2 EFI	08-09	22830	-	1011-1115	-	-	-	-	-	-
700 4x4 Ranger	08-09	1011-2350 ¹⁴	-	-	-	1011-1966	-	-	-	-
<i>Replacement filter: must have 1011-2350 first</i>		-	-	-	-	1011-1966	-	-	-	-
800 Sportsman	05-14	22830	-	1011-1115	-	-	-	-	-	-
800 X2 EFI	06-07	22830	-	1011-1115	-	-	-	-	-	-
800 X2 EFI	09-11	22830	-	1011-1115	-	-	-	-	-	-
800 Touring	08-12	22830	-	1011-1115	-	-	-	-	-	-
800 RZR Ranger	2008	1011-3660	-	-	-	1011-3659	-	-	-	-
<i>Must have 1011-3660 first</i>		-	-	-	-	1011-3659	-	-	-	-
800 RZR/RZR 4 / Ranger XP / 4	09-15	1011-2353 ¹⁵	-	-	-	-	-	-	-	-
800 4x4 Ranger	10-12	1011-2350 ¹⁴	-	-	-	1011-1966	-	-	-	-
<i>Replacement filter: must have 1011-2350 first</i>		-	-	-	-	1011-1966	-	-	-	-
850 Touring/EPS	09-14	22830	-	1011-1115	-	-	-	-	-	-
850 Sportsman XP/EPS EFI	09-18	1011-3660	-	-	-	1011-3659	-	-	-	-
<i>Must have 1011-3660 first</i>		-	-	-	-	1011-3659	-	-	-	-
Scrambler 850	13-18	1011-3660	-	-	-	1011-3659	-	-	-	-
<i>Replacement filter: must have 1011-3660 first</i>		-	-	-	-	1011-3659	-	-	-	-
900 Ranger Diesel	11-12	1011-2350 ¹⁴	-	-	-	1011-1966	-	-	-	-
<i>Replacement filter: must have 1011-2350 first</i>		-	-	-	-	1011-1966	-	-	-	-
RZR 1000 XP / XP 4	14-19	1011-3656	-	-	-	1011-3655	-	-	-	-
<i>Replacement filter: must have 1011-3656 first</i>		-	-	-	-	1011-3655	-	-	-	-
RZR XP TURBO / XP 4 TURBO	16-19	1011-3656	-	-	-	1011-3655	-	-	-	-
<i>Replacement filter: must have 1011-3656 first</i>		-	-	-	-	1011-3655	-	-	-	-
Sportsman/ Scrambler XP 1000	15-18	1011-3660	-	-	-	1011-3659	-	-	-	-
<i>Must have 1011-3660 first</i>		-	-	-	-	1011-3659	-	-	-	-
SUZUKI										
50 QuadSport	02-11	153049	-	-	-	-	-	-	-	-
Z50	17-18	1011-3978	-	-	-	-	-	-	-	-

¹⁻¹⁸ For all Notes: See page 23



MODELLE / APPLICATIONS / APLICACIONES / APPLICAZIONI

FITMENTS



MODEL/DESCRIPTION	YEAR	STANDARD FILTER	BACKFIRE AIR FILTER	PRE-OILED AIR FILTER	POWERFLOW KIT + REPLACEMENT PARTS			GRAND PRIX / DUST COVERS	AIRBOX COVERS	OIL FILTER
		#	#	#	KIT #	FILTER #	PRE-OILED FILTER #	#	#	#
SUZUKI (CONT.)										
80 QuadSport	87-06	153050	-	-	-	-	-	-	-	-
90 LT-Z/QuadSport	07-18	1011-2312	-	-	-	-	-	-	-	-
160 Quadrunner	91-01	1011-0216	-	-	-	-	-	-	-	140005
160 Quadrunner	03-05	1011-0216	-	-	-	-	-	-	-	140005
250 Ozark	02-14	-	-	-	-	-	-	-	-	140005
250 Quadrunner	88-01	22969	-	-	-	-	-	-	-	140005
250 Quadrunner 4WD	87-02	22969	-	-	-	-	-	-	-	140005
250 QuadSport LT-Z	04-11	1011-0217	-	-	-	-	-	-	-	140005
300 King Quad	91-02	22969	-	-	-	-	-	-	-	140005
400 LT-Z	03-13	153908 ¹⁶	-	1011-1109	-	1011-1985	-	-	-	140007
400 Eiger / 400 King Quad	02-18	153908 ¹⁶	-	1011-1109	-	1011-1985	-	-	-	140006
LTR 450 Quadracer	06-11	1011-0781	-	1011-1111	1011-1315 ⁶	1011-1983	1011-1112	-	-	140007
450 King Quad	07-10	-	-	-	1011-0550 ⁷	1011-1984	-	-	-	140006
<i>Must have 1011-0550 first</i>		-	-	-	-	1011-1984	1011-1113	-	-	-
500 Quadmaster	00-01	1011-1967	-	-	-	-	-	-	-	-
500 Quadrunner	98-02	1011-1967	-	-	-	-	-	-	-	140006
500 Vinson (all)	02-07	153908 ¹⁶	-	1011-1109	-	1011-1985	-	-	-	140006
500 King Quad	09-18	-	-	-	1011-0550 ⁷	1011-1984	-	-	-	140006
<i>Must have 1011-0550 first</i>		-	-	-	-	1011-1984	1011-1113	-	-	-
700 Twin Peaks	04-05	151913	-	1011-1095	-	-	-	-	-	140015
700 King Quad	05-07	-	-	-	1011-0550 ⁷	1011-1984	-	-	-	140006
<i>Must have 1011-0550 first</i>		-	-	-	-	1011-1984	1011-1113	-	-	-
750 King Quad	08-18	-	-	-	1011-0550 ⁷	1011-1984	-	-	-	140006
<i>Must have 1011-0550 first</i>		-	-	-	-	1011-1984	1011-1113	-	-	-
TRACKER										
XTR 1000	2020	1011-4319	-	-	-	-	-	-	-	-
YAMAHA										
50 Raptor	04-10	152609	-	-	-	-	-	-	-	-
50 YFZ	17-20	1011-3977	-	-	-	-	-	-	-	-
80 Raptor/Badger/Grizzly	92-10	152609	-	-	-	-	-	-	-	-
90 Raptor	09-15	1011-1642	-	-	-	-	-	-	-	-
90 Raptor	16-20	1011-4172	-	-	-	-	-	-	-	-
125 Breeze	98-04	22614	-	1011-1104	-	-	-	-	-	-
125 Grizzly/Raptor	05-14	22614	-	1011-1104	-	-	-	-	-	-
200 Blaster	90-06	22614	-	1011-1104	-	-	-	-	-	-
200 Timberwolf	92-00	22970	-	-	-	-	-	-	-	-
250 Bruin	05-06	1011-0429 ¹⁷	-	-	-	-	-	-	-	140009
250 Big Bear	07-09	1011-0429 ¹⁷	-	-	-	-	-	-	-	140009
250 Raptor	08-15	1011-1968	-	-	-	-	-	-	-	140017
300 Grizzly	12-13	1011-3081	-	-	-	-	-	-	-	-
350 Banshee	87-06	22615	-	1011-1100	-	-	-	-	-	-
350 Big Bear 2/4WD	87-99	22970	-	-	-	-	-	-	-	140008
350 Warrior	87-04	22613	-	1011-1102	-	1011-1987	-	-	-	140008
350 Wolverine / 4WD	95-09	22613	-	1011-1102	-	1011-1987	-	-	-	140008
350 Bruin /4WD	04-06	152611 ¹⁷	-	1011-1097	-	-	-	-	-	140016
350 Raptor	04-15	22613	-	1011-1102	-	-	-	-	-	140008
350 Grizzly	07-14	152611 ¹⁷	-	1011-1097	-	-	-	-	-	140015
350 Grizzly	12-19	1011-0429	-	-	-	-	-	-	-	-
400 Kodiak	96-99	22970	-	-	-	-	-	-	-	140008
400 Kodiak /4WD	00-02	152613	-	-	-	-	-	-	-	140016
400 Kodiak	03-06	152611 ¹⁷	-	1011-1097	-	-	-	-	-	140016
400 Big Bear / 4X4	00-13	1011-0429 ¹⁷	-	-	-	-	-	-	-	140008
400 Grizzly	07-08	152611 ¹⁷	-	1011-1097	-	-	-	-	-	140015

¹⁻¹⁸ For all Notes: See page 23



ATV / UTV



MODEL/DESCRIPTION	YEAR	STANDARD FILTER	BACKFIRE AIR FILTER	PRE-OILED AIR FILTER	POWERFLOW KIT + REPLACEMENT PARTS			GRAND PRIX / DUST COVERS	AIRBOX COVERS	OIL FILTER
		#	#	#	KIT #	FILTER #	PRE-OILED FILTER #	#	#	#
YAMAHA (CONT.)										
450 Kodiak 2/4WD	03-06	152611 ¹⁷	-	1011-1097	-	-	-	-	-	140016
450 Kodiak 2/4WD	16-20	1011-0429	-	-	-	-	-	-	-	-
450 Wolverine / 4X4	06-10	152611 ¹⁷	-	1011-1097	-	-	-	-	-	140016
450 Grizzly	07-14	152611 ¹⁷	-	1011-1097	-	-	-	-	-	140015
450 YFZ	04-14	1011-0015	-	1011-1101	1011-0218 ⁴	1011-2355	-	-	1011-0222	140017
450 Rhino	06-09	1011-0653	-	-	-	-	-	-	-	140016
YFZ 450 R / SE	09-20	1011-0015	-	1011-1101	1011-0218 ⁴	1011-2355	-	-	1011-0222	140017
YFZ 450 X	10-14	1011-0015	-	1011-1101	1011-0218 ⁴	1011-2355	-	-	1011-0222	140017
550 Grizzly	09-14	1011-1081	-	1011-1106	-	-	-	-	-	140015
600 Grizzly	98-01	22613	-	1011-1102	-	1011-1987	-	-	-	140010
660 Grizzly	02-09	22613	-	1011-1102	-	1011-1987	-	-	-	140011
660 Raptor	01-05	152904	-	1011-1103	-	-	-	-	-	140011
Rhino 660	05-07	1011-0653	-	-	-	-	-	-	-	140016
700 Viking	14-19	1011-3830	-	-	-	-	-	-	-	-
700 Wolverine	16-17	1011-3830	-	-	-	-	-	-	-	-
700 Grizzly Kodiak	16-20	1011-3829	-	-	-	-	-	-	-	-
700 Raptor	06-20	1011-0652	-	1011-1105	1011-1991 ⁵	1011-1987	-	1011-4139	-	140010
700 Grizzly	07-15	1011-1081	-	1011-1106	-	-	-	-	-	140015
700 Rhino	08-14	1011-1727	-	-	-	-	-	-	-	140015
850 Wolverine X2, X4	18-20	1011-4303	-	-	-	-	-	-	-	-

¹⁻¹⁸ For all Notes: See page 23

NOTES:

- ¹ Comes with plastic composite intake flange, backfire filter, and mounting hardware.
- ² Comes with plastic flange, backfire clamp-on filter, and 2 clamps.
- ³ Comes with aluminum flange, filter cage, backfire filter, and mounting hardware.
- ⁴ Comes with oversized mounting flange, oversized backfire clamp-on filter and clamp. CANNOT use AirBox Cover #1011-0222 with this kit.
- ⁵ Comes with plastic adaptor, backfire clamp-on filter, and clamp.
- ⁶ Comes with wire filter cage, backfire filter. Uses stock mounting hardware.
- ⁷ Comes with wire filter cage, backfire filter, air box lid. Uses stock filter bolt.
- ⁸ Comes with plastic composite intake tube, backfire filter, and mounting hardware.
- ⁹ Comes with std. Twin Air filter and wire filter cage.
- ¹⁰ Comes with plastic intake flange, wire filter cage, and backfire filter.
- ¹¹ Comes with plastic filter base and square foam filter.
- ¹² Comes with clamp on filter and plastic reducer and hose clamp.
- ¹³ Comes with a flat wire cage, backfire filter, and black foam spacer.
- ¹⁴ Comes with std. Twin Air filter and wire filter cage.
- ¹⁵ Comes with spring and Twin Air Backfire Filter.
- ¹⁶ Air box covers 22963 only work with POWERFLOW Kits.
- ¹⁷ Foam outer cover for Stock Filter.
- ¹⁸ Filter that comes with a plastic insert for the rubber flange.



PRODUKTE / PRODUITS / PRODUCTOS / PRODOTTI

PRODUCTS



AIR BOX DECAL

AIRBOX-AUFKLEBER / AUTOCOLLANT DE BOÎTE À AIR
ADHESIVOS PARA CAJA DEL FILTRO / ADESIVI SCATOLA FILTRO



4320-1236



4320-1229

MODEL	PART #
BETA	
2-1/4-stroke 20	4320-2390
HONDA	
CRF250R 04-09	4320-1228
CRF250R/RX 18-20	1011-3944
CRF450R 05-08	4320-1228
CRF450R/RX 17-20	1011-3944
HUSABERG	
TE models 12 (all)	4320-1237
HUSQVARNA	
FC-TC 19/20, FE-TE 20	4320-2389

MODEL	PART #
KAWASAKI	
KX250F 13-16	4320-1482
KX450F 12-15	4320-1482
KX 450 19/20	4320-2391
KTM	
200/250/450/525 03-06	4320-1231
SX/SX-F/EXC 07-10	4320-1237
SX-SXF 19/20, EXC 20	4320-2388
SUZUKI	
RM-Z250 10-18	4320-1240
RMZ 450 18/19, RMZ 250 19/20	1011-4150

MODEL	PART #
YAMAHA	
YZ125/250 02-14	4320-1229
YZ125/250 15-20	4320-1803
YZ250F 06-09	4320-1232
YZ250F 19-20	1011-4043
YZ450F 06-09	4320-1232
YZ450F 18-20	1011-4043
UNIVERSAL	
325 mm x 300 mm	4320-1227



FUEL TANK FOAM

TANK-SCHAUMSTOFF
MOUSSE DE RÉSERVOIR DE CARBURANT
ESPUMA DEPÓSITO DE GASOLINA
SPUGNE PER SERBATOIO CARBURANTE

DESCRIPTION	PART #
Fuel Tank Foam (50 pcs.)	0701-0656



FILTER SKIN

FILTERHÜLLEN / CHAUSSETTE DE FILTRE
CUBRE-FILTRO / COPERTURA FILTRO

DESCRIPTION	PART #
Filter Skin	1011-2422



AIR FILTER FOAM

LUFTFILTERSCHAUMSTOFF
MOUSSE DE FILTRE À AIR
ESPUMA PARA FILTRO DE AIRE
SPUGNA FILTRO ARIA



1011-3021

DESCRIPTION	PART #	DESCRIPTION	PART #
Single stage 600 mm x 300 mm x 10 mm	1011-3020	Double stage 600 mm x 300 mm x 15 mm	1011-2424
Single stage 600 mm x 300 mm x 20 mm	1011-3039	Triple stage 600 mm x 300 mm x 18 mm	1011-3021



1011-2412

1011-2413

CLAMP-ON AIR FILTER

ANKLEMBBARE LUFTFILTER
FILTRE À AIR À COLLIER
FILTRO DE AIRE DE MONTAJE DIRECTO
FILTRO ARIA CON MONTAGGIO TRAMITE FASCETTA

FILTER SHAPE	FILTER DIAMETER WIDTH	FILTER LENGTH	RUBBER LENGTH	RUBBER DIAMETER WIDTH	PART #
Round	100 mm	115 mm	60 mm	50 mm	1011-2403
Round	115 mm	115 mm	60 mm	57 mm	1011-2404
Round	115 mm	165 mm	60 mm	57 mm	1011-2405
Round	125 mm	165 mm	60 mm	63 mm	1011-2406
Round	140 mm	140 mm	15 mm	73 mm	1011-2407
Round	140 mm	165 mm	15 mm	73 mm	1011-2408
Round	80 mm	110 mm	-	50 mm	1011-2409
Oval	120 x 70 mm	50 mm	60 mm	40 mm	1011-2410
Oval	120 x 70 mm	50 mm	60 mm	45 mm	1011-2411
Round	80 mm	105 mm	60 mm	40 mm	1011-2412
Cone	70 x 50 mm	100 mm	15 mm	45 mm	1011-2413
Cone	70 x 50 mm	100 mm	15 mm	40 mm	1011-2414
Cone	70 x 50 mm	100 mm	15 mm	35 mm	1011-2415
Round	70 mm	55 mm	15 mm	45 mm	1011-2416
Oval	70 x 50 mm	55 mm	15 mm	40 mm	1011-2417
Oval	70 x 50 mm	55 mm	15 mm	35 mm	1011-2418
Round 45°	110 mm	80 mm	15 mm	45 mm	1011-2419
Round 45°	110 mm	80 mm	15 mm	40 mm	1011-2420
Round 45°	110 mm	80 mm	15 mm	35 mm	1011-2421



AIRBOX SEALING RING

AIRBOX-DICHTUNGSRING / JOINT DE BOÎTE À AIR / ANILLO DE SELLADO CAJA DEL FILTRO / ANELLO DI TENUTA SCATOLA FILTRO



MODEL	PART #
HONDA	
CRF250R 14-16	1011-2948
CRF250R 18 / CRF450R 17-18	1011-3976

MODEL	PART #
KTM	
125/150/250/300/350/450 SX/SX-F/XC/XC-F 11-16	1011-2825

AIRBOX VENTS

AIRBOX-BELÜFTUNGEN / VENTILATIONS DE BOÎTE À AIR / TOMAS DE AIRE CAJA DEL FILTRO / PRESE D'ARIA SCATOLA FILTRO



DESCRIPTION	PART #
Oval (2 pcs.)	1010-0168

DESCRIPTION	PART #
Round (2 pcs.)	1010-0983

BILLET AIR FILTER BOLTS

LUFTFILTERSCHRAUBEN AUS BILLET-ALU / VIS DE FILTRE À AIR TAILLÉES DANS LA MASSE
TORNILLOS BILLET PARA FILTRO DE AIRE / VITI FILTRO ARIA IN ALLUMINIO BILLET



MODEL	PART #
GAS GAS	
All until 06	1011-3051
65 02-08 (50 mm)	1011-3048
HONDA	
CR125/250 2-Stroke	1011-3051
CR85/CRF150R 02-08 (50 mm)	1011-3048
CRF250 06 (50 mm)	1011-3048
CRF250 02-08 (50 mm)	1011-3048
CRF250R 10-14 (60 mm for PowerFlow kits with inner sealing ring only)	1011-3049

MODEL	PART #
HONDA (CONT.)	
CRF 06 (60 mm for PowerFlow kits with inner sealing ring only)	1011-3049
CRF450R/X 02-08 (50 mm)	1011-3048
CRF450R 09-14 (60 mm for PowerFlow kits and OEM)	1011-3049
KAWASAKI	
KX65/85/125/250 KXF450 KXF250 (Until 05)	1011-3051
KXF PowerFlow kit 06 (60 mm for PowerFlow kits with inner sealing ring only)	1011-3049
KX/KXF 125-450 06-14 (80 mm)	1011-3051

MODEL	PART #
SUZUKI	
RM85 06-14 (60 mm for PowerFlow kits with inner sealing ring only)	1011-3049
RM/RMZ 125-450 06-16 (70 mm)	1011-3050
RMZ250 (80 mm)	1011-3051
TM	
125/250 2-Stroke 250/450 4-Stroke 01-12	1011-3051
YAMAHA	
YZ85 (80 mm)	1011-3051
YZ/YZF 125-450 06-16 (70 mm)	1011-3050

FUEL FILTERS

KRAFTSTOFFFILTER / FILTRES À CARBURANT / FILTROS DE GASOLINA / FILTRI CARBURANTE

MODEL	PART #
HONDA	
CRF250 10-17 / CRF450 09-16 / TRX450R 8-14 / CRF450RX 17-18	0707-0021
CRF450R 17-18	1011-3965
HUSABERG	
4-strk FE250/350/501 13	0707-0025
HUSQVARNA	
End. FE250/350/450/501 14-19	0707-0025
TE 250i/350i 18-19	0707-0025
FC 250/350/450 14-19	0707-0026
FC250/350 (threaded cap) 14-19 / FC450 (threaded cap) 14-19	0707-0026
KAWASAKI	
KXF 250 11-19, KXF 450 09-19	0707-0022
KTM	
250/350/450 SXF 11-12 / EXC/EXC-F/XC-F 250/350/450/500 11-19	0707-0025
350 Free Ride 13-17	0707-0025
250/350 EXC TPI 18-19, XC-W TPI 18-19	0707-0025

0707-0021



MODEL	PART #
KTM (CONT.)	
250/350 SXF (threaded cap) 13-19 / 450 SX-F (threaded cap) 16-19	0707-0026
450 SXF (threaded cap) 13-15	0707-0027
SUZUKI	
RMZ 250 12-18, 450 12-17	0707-0024
YAMAHA	
YZF / WRF 250 06-13, YZF / WRF 450 06-13	0707-0023
YZF 250 14-18, 450 14-17, WRF 250/450 15-19	0707-0028
YZF 250 19, YZF 450 18-19	0707-0060
YZF 250 14-18, YZF 450 14-17, WRF 250 / 450 15-19	0707-0022
YFZ 450R 04-19	1011-3964
IMS/POWERCELL/CLARK/ACERBIS FUEL TANKS	
All, except with Quick Fill Caps	0707-0035
Acerbis Large Fuel Tanks with Quick Fill Caps	0707-0073



PRODUKTE / PRODUITS / PRODUCTOS / PRODOTTI

PRODUCTS



SKID PLATE FOAM

SCHAUMSTOFF FÜR MOTORSCHUTZPLATTE / MOUSSE DE SABOT
ESPUMA PARA CUBRECÁRTER / SPUGNA PIASTRA PARAMOTORE



DESCRIPTION	PART #
300 mm x 120 mm x 40 mm	1011-2423

FOOTPEG FOAM

SCHAUMSTOFF FÜR FUSSRASTE / MOUSSE DE REPOSE-PIED
ESPUMA PARA ESTRIBERAS / SPUGNE POGGIAPIEDI



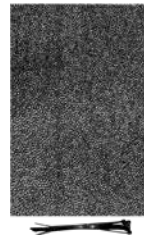
DESCRIPTION	PART #
Footpeg Foam	0506-0637



RADIATOR GAUZE

KÜHLER GAZE / GAZE DE RADIATEUR
MALLA PARA RADIADOR / RETINA RADIATORE

DESCRIPTION	PART #
300 m x 200 mm	0506-0639



0506-0638

RADIATOR FOAM

KÜHLERSCHAUMSTOFF / MOUSSE DE RADIATEUR
ESPUMA DEL RADIADOR / SPUGNA RADIATORE

DESCRIPTION	PART #
360 mm x 150 mm x 8 mm	0506-0638
330 mm x 220 mm x 8 mm	0506-0690

EXHAUST PLUGS

AUSPUFFSTOPFEN / BOUCHONS D'ÉCHAPPEMENT / TAPONES DE ESCAPE / TAPPI SCARICO

DESCRIPTION	PART #
Mini 18-21 mm	1861-1353
Small 18-40 mm	1861-0787



DESCRIPTION	PART #
Large 32-55 mm	1861-0788
11-pc. exhaust plug display, includes 5 small and 6 large	1861-0794

OIL FILTER CAP

ÖLFILTERDECKEL / BOUCHON DE FILTRE À HUILE / TAPÓN FILTRO DE ACEITE / TAPPO FILTRO OLIO

0713-0101



MODEL	PART #
HONDA	
CRF 250 10-17	0713-0101
CRF 450 09-15	0713-0102
CRF 450 R / RX 17-18	0713-0143
HUSKY	
FC250/350 14-17 / FC450 16-17	0713-0109
KAWASAKI	
KXF 250 05-19	0713-0103
KXF 450 06-15	0713-0104

MODEL	PART #
KTM	
250 13-19 / 350 12-19 / 450 2012 / 16-19	0713-0109
SUZUKI	
RMZ 250 07-18 / RMZ 450 05-19	0713-0107
YAMAHA	
YZF 250 14-19 / YZF 450 10-19	0713-0106



RADIATOR SLEEVES

KÜHLERHUTZEN / GRILLES DE RADIATEUR / FUNDAS PARA RADIADOR / PROTEZIONI COPRIRADIATORE



MODEL	PART #
BETA	
2-4-stroke 13-19	1904-0165
GAS GAS	
Enduro models 07-19	1904-0166
HONDA	
CRF250R 14-17	1904-0139
CRF250R 18-19	1904-0179
CRF450R 13-16, 250R 16-17	1904-0093
CRF450R/RX 17-18	1904-0154
CRF 450R 19	1904-0191
CRF 450X 19, CRF 450L 19	1904-0199
TRX450R 06-14	1904-0153
HUSQVARNA	
TC50 17-19	1904-0185
TC 85 14-17	1904-0160
TC 85 18-19	1904-0201
Fan Protector Rally 13-18	1904-0174
TE 125/250 14-16/FE 250/350/450 14-16	1904-0099 ¹
TC 125/250 14-15/ FC 250/350/450 14-16	1904-0099
TC/TE 125/250 14-15/FC/FE 250/350/450 14-15	1904-0159 ²
TE 125/250 14-16/FE 250/350/450 14-16	1904-0100
TC 125 16-18/FC 250/350/450 16-18	1904-0193
TX 125 17-19/300 17-18/TE 150/250/300/350 17-19	1904-0162
FE 250/350/450/501 17-19	1904-0173
TC 125/250 19, TX300 19, FC 250/350/450 19, FS450 19	1904-0193
FR450 Rally 16-17	1904-0162
FR450 Rally 18-19	1904-0173
KAWASAKI	
KX250F 13-16	1904-0094
KX85 14-19 (single radiator)	1904-0155
KX450F 12-15	1904-0095
KX450F 16-19/KXF250 17-19	1904-0156 ¹

MODEL	PART #
KTM	
SX50 12-19	1904-0185
SX 55 13-16/SX 65 13-19	1904-0161 ¹
SX 85 13-17	1904-0160 ¹
SX 85 18-19	1904-0201
SX/SX-F 07-15/EX/EXC-/XC/XC-F 08-16	1904-0099 ¹
SX/SX-F 07-15 EX/EXC-/XC/XC-F 08-17	1904-0159 ²
SX 125/150 16-18/SX 250 17/18	1904-0100
SXF 250/350/450 16-18/XCF 250/350/450 17	1904-0193
XC 250/300 17/EXC-F 250/350/450/500 17	1904-0162
SX 125/150/250 19, SXF 250/350/450 19	1904-0173
XC 250/300 19, XC-F 250/350/450 19	1904-0162
450 Rally 12-17	1904-0162
450 Rally 18-19	1904-0173
SUZUKI	
RMZ450 18-19	1904-0098
RMZ250 10-18/RMZ450 08-17	1904-0097 ¹
TM	
MX/Enduro 2-stroke 125/250/300 15-19	1904-0163 ¹
YAMAHA	
YZ65 18-19 (single radiator)	1904-0192
YZ125/250 2-stroke 02-19	1904-0157 ¹
YZ250F 14-18	1904-0096 ¹
YZ250F 19	1904-0180
YZ450F 14-17	1904-0096
YFZ450 14-18	1904-0158 ³
YZ450F 18-19	1904-0180

¹ MX Radiator Sleeve (OEM Radiator).

² Oversized Aftermarket Radiator.

³ ATV Radiator Sleeve.

ICEFLOW COOLANT

ICEFLOW KÜHLMITTEL

LIQUIDE DE REFROIDISSEMENT ICEFLOW

LÍQUIDO ANTICONGELANTE ICEFLOW

LIQUIDO DI RAFFREDDAMENTO ICEFLOW



DESCRIPTION	PART #
Ice Coolant (2,2 L)	3705-0022

RADIATOR HIGH-PRESSURE CAP

HOCHDRUCK-KÜHLERDECKEL

BOUCHON DE RADIATEUR HAUTE PRESSION

TAPÓN ALTA PRESIÓN DE RADIADOR

TAPPO RADIATORE AD ALTA PRESSIONE



DESCRIPTION	PART #
For Honda/Kawasaki/Suzuki/Yamaha; 1,8 bar (26 psi)	1904-0182
For Honda/Kawasaki/Suzuki/Yamaha; 2,0 bar (29 psi)	1904-0234
For KTM/Husqvarna SX/SX-F 08-15, EXC/EXC-F/XC-F 08-16; 2,0 bar (29 psi)	1904-0183
For KTM/Husqvarna SX/SX-F 16-18, EXC/EXC-F/XC-F 17-20; 2,0 bar (29 psi)	1904-0184



PRODUKTE / PRODUITS / PRODUCTOS / PRODOTTI

PRODUCTS



CONTACT CLEANER

KONTAKTREINIGER
NETTOYANT DE CONTACT
CONTACT CLEANER
DETERGENTE CONTATTI



DESCRIPTION	PART #
Contact Cleaner (500 ml) / 12 pcs.	3704-0102

BIO AIR FILTER SEALANT

BIO-LUFTFILTER-VERSIEGELUNG
SCÉLLANT DE FILTRE À AIR BIO
SELLADOR FILTRO DE AIRE BIO
SIGILLANTE FILTRO ARIA BIO



DESCRIPTION	PART #
BIO Air Filter Sealant (100 ml) / 1 pcs.	3607-0030

LIQUID POWER FILTER OIL

LIQUID POWER FILTERÖL / HUILE DE FILTRE LIQUID POWER
ACEITE PARA FILTRO LIQUID POWER / OLIO FILTRO LIQUID POWER



DESCRIPTION	PART #	DESCRIPTION	PART #	DESCRIPTION	PART #
Filter Oil (1 L)	22510	Filter Oil Spray (500 ml)	3610-0014	Filter Oil Cleaning Tub	22999

LIQUID DIRT REMOVER

LIQUID DIRT SCHMUTZENTFERNER / NETTOYANT LIQUID DIRT REMOVER
DETERGENTE FILTRO LIQUID DIRT REMOVER / DETERGENTE FILTRO LIQUID DIRT REMOVER



DESCRIPTION	PART #	DESCRIPTION	PART #
Dirt Remover (4 L)	22514	Dirt Remover Cleaning Tub	22998



MAINTENANCE SET

WARTUNGSSET
KIT D'ENTRETIEN
SET DE MANTENIMIENTO
SET MANUTENZIONE



BIO FILTER CARE

BIO-FILTERPFLEGE
SOIN DE FILTRE BIO
PRODUCTOS BIO PARA CUIDADO DEL FILTRO
PRODOTTI BIO PER LA CURA DEL FILTRO

DESCRIPTION	PART #
Filter Oil Spray (500 ml) + Dirt Remover Spray (500 ml)	3704-0183
BIO Filter Oil (1 L) + BIO Dirt Remover (1 L)	3610-0054

DESCRIPTION	PART #
BIO Power Filter Oil Spray (500 ml)	3610-0015
BIO Power Filter Oil (1 L)	159017
BIO Dirt Remover (1 L)	159004

RUBBER GLOVES

GUMMIHANDSCHUHE
GANTS EN CAOUTCHOUC
GUANTES DE GOMA
GUANTI IN GOMMA



ORIGINAL SYSTEM

ORIGINAL SYSTEM WARTUNGSKIT
KIT D'ENTRETIEN ORIGINAL SYSTEM
KIT DE MANTENIMIENTO ORIGINAL SYSTEM
KIT MANUTENZIONE ORIGINAL SYSTEM

DESCRIPTION	PART #
Rubber Gloves (10pcs.)	3350-0064

DESCRIPTION	PART #
Filter Oil (1 L) + Dirt Remover (4 L) + Dirt Remover Cleaning Tub (with cage) + Filter Oil Cleaning Tub + Contact Cleaner (500 ml) + Gloves	159000

BIO SYSTEM

BIO-SYSTEM WARTUNGSKIT / KIT D'ENTRETIEN BIO SYSTEM
KIT DE MANTENIMIENTO BIO SYSTEM / KIT MANUTENZIONE BIO SYSTEM



DESCRIPTION	PART #
Dirt Remover Cleaning Tub + Filter Oil Cleaning Tub + BIO Dirt Remover (1 L) + BIO Power Filter Oil (1 L) + Contact Cleaner (500 ml) + Gloves	3610-0019



PRODUKTE / PRODUITS / PRODUCTOS / PRODOTTI

PRODUCTS



4030-0011



4030-0028

CANOPY

PAVILLON / TONNELLE / CARPA / TENDONE

DESCRIPTION	PART #
Canopy (3 x 3 m) Steel	4030-0011
Sidewall (3 x 3 m)	4030-0012
Rain Gutter	4030-0028



9905-0046



9901-1214

DECALS

STICKER / AUTOCOLLANTS / ADHESIVOS / ADESIVI

DESCRIPTION	PART #
Oval (456 x 166 mm)	4320-1507
Oval (100 x 40 mm)	1011-2438
Authorized Dealer (110 x 200 mm) - Inside Window	9901-1214
Authorized Dealer (110 x 200 mm) - Outside Window	9901-2105

STICKER SHEET

STICKERBOGEN / FEUILLE D'AUTOCOLLANTS
HOJA DE ADHESIVOS / FOGLIO ADESIVI



DESCRIPTION	PART #
Sticker Sheet	4320-1541



GRIP DONUTS

GRIFF-DONUTS / DONUTS DE POIGNÉE
DISCOS DE ESPONJA PARA PUÑOS
DISCHETTI ANTISCIVOLO PER MANOPOLE

DESCRIPTION	PART #
Grip Donuts (20mm) Single Stage Foam	0630-1102

WALL DISPLAY

WANDDISPLAY / PRÉSENTOIR MURAL
EXPOSITOR DE PARED / ESPOSITORE A MURO



DESCRIPTION	PART #
Wall Display	9903-0623



TRACK BANNER

STRECKENBANNER / BANNIÈRE DE PISTE / BANNER PARA PISTA / BANNER PISTA

DESCRIPTION	PART #
Track Banner (300 x 80 cm)	9905-0045

DOOR MAT

FUSSMATTE / TAPIS
ALFOMBRILLA PARA TIENDA / ZERBINO



DESCRIPTION	PART #
Door Mat (60 x 80 cm) PVC with Nylon	9904-0897

PIT MAT

BODENMATTE / TAPIS ABSORBANT
ALFOMBRILLA DE TRABAJO / TAPPETO OFFICINA



DESCRIPTION	PART #
Pit Mat (160 x 100 cm) Rubber with Polyester	9501-0089
Pit Mat (200 x 100 cm) PVC with Nylon	9501-0090
Pit Mat (250 x 190 cm) XL	9301-0059



UMBRELLA

REGENSCHIRM / PARAPLUIE
PARAGUAS / OMBRELLO



DESCRIPTION	PART #
Umbrella	9905-0046

BEANIE

STRICKMÜTZE / BONNET
GORRO / BERRETTO



DESCRIPTION	PART #
Beanie BK GR	2501-3415
Beanie BK	2501-3416
Beanie WH	2501-3417

MEN'S HAT FLEXFIT

HERREN-KAPPE FLEXFIT
CASQUETTE FLEXFIT HOMME
GORRA HOMBRE FLEXFIT
CAPPELLINO FLEXFIT DA UOMO



SIZE	PART #	SIZE	PART #
BK		GR	
S-M	2501-3404	S-M	2501-3408
L-XL	2501-3405	L-XL	2501-3409
BL		STN	
S-M	2501-3406	S-M	2501-3410
L-XL	2501-3407	L-XL	2501-3411

MEN'S HAT SNAPBACK

HERREN-KAPPE SNAPBACK
CASQUETTE SNAPBACK HOMME
GORRA HOMBRE SNAPBACK
CAPPELLINO SNAPBACK DA UOMO



DESCRIPTION	PART #
Snapback Trucker BK	2501-3412
Snapback Flat BK	2501-3413
Snapback Flat V DH	2501-3414

SHIRT MEN

HERREN SHIRT
T-SHIRT HOMME
CAMISETA HOMBRE
T-SHIRT UOMO



SIZE	PART #	SIZE	PART #
S	3030-19308	XL	3030-19311
M	3030-19309	XXL	3030-19312
L	3030-19310		

SHIRT WOMEN

DAMEN SHIRT
T-SHIRT FEMME
CAMISETA MUJER
T-SHIRT DONNA



SIZE	PART #	SIZE	PART #
XS	3031-3833	L	3031-3836
S	3031-3834	XL	3031-3837
M	3031-3835		



WWW.TWINAIR.COM

FOLLOW US



DISTRIBUTED BY

**PARTS
EUROPE**
WWW.PARTSEUROPE.EU

Parts Europe GmbH
Conrad-Röntgen-Straße 2
54332 Wasserliesch/Trier (Germany)

Tel.: +49 (0) 6501 9695 - 2000
Fax: +49 (0) 6501 9695 - 2650
E-Mail: sales@partseurope.eu