

# THRASHIN<sup>®</sup>

SUPPLY COMPANY



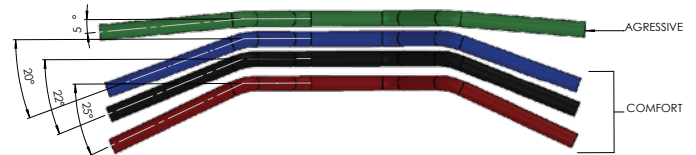
**PARTS**  
**EUROPE**

**DRAG**  
Specialties

# THRASHIN® HANDLEBARS & RISERS

## 1" HANDLEBARS:

- Drilled and slotted for internal wiring
- Knurled for maximum clamp grip
- Throttle-By-Wire keyholes allow late-style bike fitments  
(Cable throttle models require Thrashin® Handlebar Plug)
- Laser etched THRASHIN® Logo
- Made in U.S.A.



### 1" HANDLEBARS FITS STOCK HARLEY CONTROLS

PART #	DESCRIPTION	RISE	WIDTH	CENTER WIDTH	SWEEP
<b>HIGH BEND</b>					
0601-4146	Black	5 1/2"	32"	5"	20°
0601-4145	Chrome	5 1/2"	32"	5"	20°
0601-6651	Stainless Steel	5 1/2"	32"	5"	20°
<b>MID BEND</b>					
0601-4144	Black	4"	32"	4 4/5"	25°
0601-4143	Chrome	4"	32"	4 4/5"	25°
0601-6650	Stainless steel	4"	32"	4 4/5"	25°
<b>AGGRESSIVE MID</b>					
0601-5663	Black	4"	32"	4 1/2"	5°
0601-5664	Chrome	4"	32"	4 1/2"	5°
<b>LOW BEND</b>					
0601-4142	Black	2 1/2"	32"	4 1/2"	22°
0601-4141	Chrome	2 1/2"	32"	4 1/2"	22°

### FOR 24+ FLHX/FLTRX/FLTRXSTE, 23-24+ FLHXSE/FLTRXSE

PART #	DESCRIPTION	RISE	WIDTH	CENTER WIDTH	SWEEP
<b>HIGH BEND</b>					
0601-6654	Black	5 1/2"	32"	5"	20°
0601-6655	Chrome	5 1/2"	32"	5"	20°
0601-6653	Stainless Steel	5 1/2"	32"	5"	20°
<b>MID BEND</b>					
0601-6656	Black	4"	32"	4 4/5"	25°
0601-6657	Chrome	4"	32"	4 4/5"	25°
0601-6652	Stainless Steel	4"	32"	4 4/5"	25°

NOTES: Thrashin Handlebars will accept HD OEM heated grips

23-24+ Handlebars require use of THRASHIN straight or pullback riser w/ gauge cutout.

23-24 FLHX/FLHXSE models will require installation of THRASHIN® Street Glide Riser Adapter (available separately, Part # 0602-1249) and will lose function of the storage drawer within the fairing.



**OG STRAIGHT RISERS**

**PART # DESCRIPTION**

**OG 6" STRAIGHT**

- 0602-1044 6" Straight w/ standard top clamp - Black
- 0602-1045 6" Straight w/ standard top clamp - Chrome
- 0602-1052 6" Straight w/ gauge cut out clamp - Black
- 0602-1053 6" Straight w/ gauge cut out clamp - Chrome

**OG 8" STRAIGHT**

- 0602-1048 8" Straight w/ standard top clamp - Black
- 0602-1049 8" Straight w/ standard top clamp - Chrome
- 0602-1056 8" Straight w/ gauge cut out clamp - Black
- 0602-1057 8" Straight w/ gauge cut out clamp Chrome

**OG PULLBACK RISERS**

**PART # DESCRIPTION**

**OG 6.5" PULLBACK**

- 0602-1054 6.5" Pullback w/ gauge cut out clamp - Black
- 0602-1055 6.5" Pullback w/ gauge cut out clamp - Chrome
- 0602-1046 6.5" Pullback w/ standard top clamp - Black
- 0602-1047 6.5" Pullback w/ standard top clamp - Chrome

**OG 9.5" PULLBACK**

- 0602-1058 9.5" Pullback w/ gauge cut out clamp - Black
- 0602-1059 9.5" Pullback w/ gauge cut out clamp - Chrome
- 0602-1050 9.5" Pullback w/ standard top clamp - Black
- 0602-1051 9.5" Pullback w/ standard top clamp - Chrome



**HOLESHOT RISERS**

**PART # DESCRIPTION**

**4" HOLESHOT RISERS**

- 0602-1248 4" Holeshot Risers - Black
- 0602-1247 4" Holeshot Risers - Chrome

**6" HOLESHOT RISERS**

- 0602-1246 6" Holeshot Risers - Black
- 0602-1245 6" Holeshot Risers - Chrome

**PART # DESCRIPTION**

**8" HOLESHOT RISERS**

- 0602-1244 8" Holeshot Risers - Black
- 0602-1243 8" Holeshot Risers - Chrome

**10" HOLESHOT RISERS**

- 0602-1051 10" Holeshot Risers - Black
- 0602-1241 10" Holeshot Risers - Chrome

# GAUGE RELOCATION



2210-0631



2210-0632



2210-0634



2210-0633



2210-0645



2210-0646



2210-0635

## GAUGE RELOCATION AND ACCESSORIES

PART #	DESCRIPTION
<b>BAGGER GAUGE RELOCATION</b>	
2210-0631	2014-2023 Bagger Gauge Relo - Black
2210-0632	2014-2023 Bagger Gauge Relo - Chrome

<b>4" SINGLE GAUGE RELOCATION</b>	
2210-0645	4" Single Gauge - Black
2210-0646	4" Single Gauge - Chrome

PART #	DESCRIPTION
<b>GAUGE RELOCATION ACCESSORIES</b>	
2210-0633	Holeshot Riser Gauge Relo Bracket
2210-0634	OG Riser Gauge Relo Bracket
2210-0635	Front Mount Extension

## PERCH CLAMPS



### OG PERCH CLAMPS

PART #	DESCRIPTION
0615-0325	OG Perch Clamps - Black
0615-0326	OG Perch Clamps - Chrome
0615-0327	OG Perch Clamps - Twice Cut

### OG PERCH CLAMPS

PART #	DESCRIPTION
0615-0396	Speedway Perch Clamps - Black
0615-0397	Speedway Perch Clamps - Chrome
0615-0398	Speedway Perch Clamps - Twice Cut

## GRIPS & THROTTLE TUBES



### BOLT GRIPS

PART #	DESCRIPTION
<b>FITS 1" HANDLEBARS</b>	
0630-2857	Bolt Grips - Black
0630-2858	Bolt Grips - Red

### BOLT GRIPS

PART #	DESCRIPTION
<b>FITS 1" HANDLEBARS</b>	
0630-2859	Bolt Grips - Brown
0630-2856	Bolt Grips - Gray



### MOTO GRIPS

PART #	DESCRIPTION
<b>FITS 1" HANDLEBARS</b>	
0630-3216	Moto Grips - Black



0632-0983



0632-1008



0632-1009

### THROTTLE TUBES

PART #	DESCRIPTION
<b>FITS 1" HANDLEBARS</b>	
0632-0983	Billet Throttle Tube - TBW
0632-1001	2024+ Plastic Throttle Tube
0632-1008	2024+ Billet Throttle Tube - Black
0632-1009	2024+ Billet Throttle Tube - Hold

# TRIPLE TREES & ACCESSORIES



0408-0420



0408-0421



0408-0453



0408-0451



0408-0452



0408-0454

## 2014-2024 Road Glide Tree

PART #	DESCRIPTION
<b>RAW</b>	
0408-0420	2014-2023 RG Top Tree - Raw
<b>BLACK</b>	
0408-0421	2014-2023 RG Top Tree - Black

## 2024+ Road Glide Trees

PART #	DESCRIPTION
<b>BLACK</b>	
0408-0451	2024+ RG Top Tree - Black
0408-0453	2024+ RG Bottom Tee - Black
<b>CHROME</b>	
0408-0452	2024+ RG Top Tree - Chrome
0408-0454	2024+ RG Bottom Tree - Chrome

# CARBON LOCK COVERS



## 2024+ CARBON LOCK COVER

PART #	DESCRIPTION
<b>GLOSS WEAVE</b>	
0408-0455	Gloss Weave Carbon Fiber - Lock Cover

## 2024+ CARBON LOCK COVER

PART #	DESCRIPTION
<b>FORGED CARBON</b>	
0408-0456	Forged Carbon Fiber - Lock Cover

## OG RISER EXTENTIONS



### OG 1" RISER SPACERS

PART #	DESCRIPTION
<b>Works w/ THRASHIN OG Risers</b>	
0602-1109	1" Riser Spacer - Black
0602-1110	1" Riser Spacer - Crome

#### NOTES:

- Comes with hardware for OEM HD top trees - (Two) Grade 8, 1/2" x 13 x 4" bolts
- If you are pairing these with our Road Glide or Street Glide Adapter you will need to purchase - (Two) Grade 8, 1/2" x 13 x 2 1/4" socket head screws.
- If you are pairing these with our Billet Road Glide Top tree you will need to purchase - (Two) Grade 8, 1/2" x 13 x 3" hex bolts.
- If you are pairing these with our Billet Softail Top Tree you will need to purchase - (Two) Grade 8, 1/2" x 3" socket head cap screws.

## ROAD GLIDE / STREET GLIDE ADAPTER PLATE

#### Specs:

The THRASHIN® Riser Adapter features 2 grade 8 bolts that drop down through the triple clamp to our chromoly steel bushing/nut. This ensures the highest strength and quality for maximum control and peace of mind.

Raises riser mounting location 2-3/8"

**Road Glide:** Sets riser mounting location towards rider 1-5/8"

**Street Glide:** Sets riser mounting location towards rider 2"

#### Fitment:

- 2014-2023 Road Glide models including the Road Glide Special, Road Glide Limited, and Road Glide CVO.
- Will NOT fit on 2023.5 Road Glide CVO and 2024+ Road Glide Models (Risers mount directly to your OEM 2024+ Top Tree)
- 2014-2023 Street Glide

#### NOTES:

- Gauge housing will require cutting. Comes with sticker template\*
- Fork Lock and Accessory features will not be functionally on your stock key switch. You can have your stock key switch mapped by your local dealership to function like the CVO model switch, which lets you use the accessory switch from your hand controls.



PART #	DESCRIPTION
<b>THRASHIN® Adapter Plates</b>	
0602-1149	Road Glide Riser Adapter Kit
0602-1249	Street Glide Riser Adapter Kit



# TOURING FOOT CONTROLS



## OG FLOORBOARDS

PART #	DESCRIPTION
<b>BLACK</b>	
1621-0844	OG Bagger Floorboards - Black
1621-0846	OG Bagger Passenger Boards - Black
<b>CHROME</b>	
1621-1181	OG Bagger Floorboards - Chrome
1621-1180	OG Bagger Passenger Boards - Chrome

## APEX FLOORBOARDS

PART #	DESCRIPTION
<b>BLACK</b>	
1621-1110	Apex Bagger Floorboards - Black
1621-0846	Apex Bagger Passenger Boards - Black
<b>CHROME</b>	
1621-1111	Apex Bagger Floorboards - Chrome
1621-1180	Apex Bagger Passenger Boards - Chrome

## APEX EXTENTIONS & LIFT KITS



## APEX EXTENTION & LIFT KITS

PART #	DESCRIPTION
<b>BLACK</b>	
1621-1112	Apex Tail Extension w/ 1/2" Lift Kit - Black
1621-1114	Apex 1/2" Lift Kit
1621-1115	Apex Tail Extension - Black

PART #	DESCRIPTION
<b>CHROME</b>	
1621-1113	Apex Tail Extension w/ 1/2" Lift Kit - Chrome
1621-1116	Apex Tail Extension - Chrome



### EZ SHIFT INNER ARM LEVER

PART #	DESCRIPTION
<b>BLACK</b>	
1602-1444	EZ Shift Inner Arm - Black
<b>CHROME</b>	
1602-1445	EZ Shift Inner Arm - Chrome

**NOTES:**  
 • Fits '07- Current Touring Models

### ADJUSTABLE SHIFT LINKAGE - TOURING

PART #	DESCRIPTION
<b>BLACK</b>	
1621-0545	Bagger Shift Linkage - Black
<b>CHROME</b>	
1621-0546	Bagger Shift Linkage - Chrome

**NOTES:**  
 • Fits '99-Current Touring Models and Softail/Dyna with Forward Controls  
 • Shift Linkage Minimum Length 11.75" Maximum Length 13" From Eye To Eye



### BILLET SHIFT LEVER - TOURING / FXR

PART #	DESCRIPTION
<b>BLACK</b>	
1602-1416	Billet Shift Lever - Stock Length - Black
1602-1418	Billet Shift Lever - 1" Shorter - Black
<b>CHROME</b>	
1602-1417	Billet Shift Lever - Stock Length - Chrome
1602-1419	Billet Shift Lever - 1" Shorter - Chrome

**NOTES:**  
 • Fits '88-Later Touring, FXR, '86-'17 FL Softail, and '08-later Trike models.  
 • Shift arm is available in stock length 6.25", and a 1" shorter arm 5.25".  
 • You can pair the shift arm with any of our TSC Shifter Tips.

### TSC SHORTY SHIFTER PEG

PART #	DESCRIPTION
<b>BLACK</b>	
1603-0375	1" Shifter Peg - Black
<b>CHROME</b>	
1603-0410	1" Shifter Peg - Chrome

**NOTES:**  
 • These 1" Shorty Shifter Pegs were designed to be 1" shorter than the original shifter tip length.  
 They work great as the rear shift peg for bagger models, allowing you to use more of the rear of your floorboard



# BAGGER BRAKE ARMS



## The Original Adjustable Bagger Brake Arm

Stop riding with an uncomfortable brake position. This Brake Arm lets you set your pedal exactly where you want it, reducing the harsh ankle angle that comes from a fixed brake setup. It offers up to 12° of rotational adjustment, giving you as much as 1.5" of pedal position movement.



1610-0596



1610-0594



1610-0597



1610-0595

### ADJUSTABLE BAGGER BRAKE ARMS

PART #	DESCRIPTION
<b>BLACK</b>	
1610-0596	Bagger Brake Arm - 2" Shorter - Black
1610-0594	Bagger Brake Arm - Long - Black

PART #	DESCRIPTION
<b>CHROME</b>	
1610-0597	Bagger Brake Arm - 2" Shorter - Chrome
1610-0595	Bagger Brake Arm - Long - Chrome



1610-0599



1610-0601



1610-0602



1610-0713



1610-0712



1610-0603



### BAGGER BRAKE PEDALS / PAD

PART #	DESCRIPTION
<b>P-54 BAGGER BRAKE PEDAL</b>	
1610-0599	P-54 Bagger Brake Arm - Pedal - Black
1610-0713	P-54 Bagger Brake Arm - Pedal - Chrome
1610-0601	P-54 Slim Bagger Brake - Black
1610-0712	P-54 Slim Bagger Brake - Chrome

PART #	DESCRIPTION
<b>BAGGER BRAKE PAD</b>	
1611-0079	Bagger Brake Pad/Cover - Black
1611-0104	Bagger Brake Pad/Cover - Chrome
1610-0602	Bagger Brake Arm Pad Mount - Black
1610-0603	Bagger Brake Arm Pad Mount - Chrome

## M8 SOFTAIL BRAKE ARM



### M8 SOFTAIL BRAKE ARM

PART #	DESCRIPTION
<b>BLACK</b> 1610-0696	M8 Softail Brake Arm - Black
<b>CHROME</b> 1610-0697	M8 Softail Brake Arm - Chrome

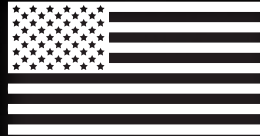
### FITMENT:

- 2018 - Current M8 Softail with Mid Controls

### NOTES:

- Does not come with brake pedal / shifter peg. Must purchase brake pedal of your choice, works with all of our THRASHIN® SHIFTER PEGS.

**MADE IN  
THE USA**



# THRASHIN® FOOT CONTROLS



## SHIFTER PEGS / BRAKE PEDALS

PART #	DESCRIPTION
<b>TSC BILLET SHIFTER TIP</b>	
1603-0333	TSC Shifter Tip - Black
1603-0368	TSC Shifter Tip - Red
1603-0399	TSC Shifter Tip - Chrome
1603-0370	TSC Shifter Tip - Gold
<b>SPEEDWAY SHIFTER TIP</b>	
1603-0394	Speedway Shifter Tip - Black
1603-0395	Speedway Shifter Tip - Chrome
<b>P-54 SHIFTER TIP</b>	
1603-0397	P-54 Shifter Tip - Black
1603-0398	P-54 Shifter Tip - Chrome

### NOTES:

Shifter tips also work as brake pedals for THRASHIN® M8 Softail and Dyna Brake arms.



**THRASHIN® FOOT PEGS**

**PART # DESCRIPTION**

**P-54 BLACK**

1620-1754	P-54 Pegs - DYNA/FXR/XL - Black
1620-1759	P-54 Pegs - 2018+ Softail Front - Black
1620-1761	P-54 Pegs - 2018+ Softail Rear - Black

**P-54 CHROME**

1620-2608	P-54 Pegs - DYNA/FXR/XL - Chrome
1620-2609	P-54 Pegs - 2018+ Softail Front - Chrome
1620-2610	P-54 Pegs - 2018+ Softail Rear - Chrome

**P-54 SLIMS - BLACK**

1620-1756	P-54 Slim - DYNA/FXR/XL - Black
1620-1763	P-54 Slim - 2018+ Softail Front - Black
1620-1765	P-54 Slim - 2018+ Softail Rear - Black

**PART # DESCRIPTION**

**P-54 SLIMS - CHROME**

1620-1754	P-54 Slims - DYNA/FXR/XL - Chrome
1620-1759	P-54 Slims - 2018+ Softail Front - Chrome
1620-1761	P-54 Slims - 2018+ Softail Rear - Chrome

**MILITANT - BLACK**

1620-2096	Militant - DYNA/FXR/XL - Black
1620-2097	Militant - 2018+ Softail Front - Black
1620-2098	Militant - 2018+ Softail Rear - Black

**MILITANT - CHROME**

1620-2614	Militant - DYNA/FXR/XL - Chrome
1620-2615	Militant - 2018+ Softail Front - Chrome
1620-2616	Militant - 2018+ Softail Rear - Chrome



**OG MINI FLOORBOARDS**

**PART # DESCRIPTION**

**OG MINI FLOORBOARDS - BLACK**

1621-0842	OG Mini Boards - DYNA/FXR/XL - Black
1621-0848	OG Mini Boards - 2018+ Softail Front - Black

**OG MINI FLOORBOARDS - CHROME**

1621-1178	OG Mini Boards - DYNA/FXR/XL - Chrome
1621-1179	OG Mini Boards - 2018+ Softail Front - Chrome

**APEX MINI FLOORBOARDS**

**PART # DESCRIPTION**

**APEX MINI FLOORBOARDS - BLACK**

1621-1145	Apex Mini Boards - DYNA/FXR/XL - Black
1621-1146	Apex Mini Boards - 2018+ Softail Front - Black

**APEX MINI FLOORBOARDS - CHROME**

1621-1149	Apex Mini Boards - DYNA/FXR/XL - Chrome
1621-1150	Apex Mini Boards - 2018+ Softail Front - Chrome



**DYNA / SOFTAIL SHIFT LEVER**

**PART # DESCRIPTION**

**DYNA SHIFT LEVER**

1602-1412	Dyna / Mid Control Softail Shift Lever - Black
1602-1413	Dyna / Mid Control Softail Shift Lever - Chrome

**SOFTAIL SHIFT LEVER**

1602-1414	M8 Softail Shift Lever - Black
1602-1415	M8 Softail Shift Lever - Chrome

**ADJUSTABLE SHIFT LINKAGE - DYNA / SOFTAIL**

**PART # DESCRIPTION**

**ADJUSTABLE SHIFT LINKAGE - BLACK**

1602-0543	Dyna / Softail w/ Mids - Shift Linkage - Black
-----------	--

**ADJUSTABLE SHIFT LINKAGE - CHROME**

1602-0544	Dyna / Softail w/ Mids - Shift Linkage - Chrome
-----------	---

# AGGRESSOR FOOT CONTROLS



## AGGRESSOR FLOORBOARDS

These floorboards are designed to provide the maximum amount of grip and improve ground clearance while maintaining a sleek and timeless design.

Featuring 24 cone-shaped stainless steel cleats per floorboard, and placed on our larger foot-shaped platform, these boards not only look great but will improve the feel of your motorcycle.

### Specs:

- Floorboards Measure: 12" Long x 4.5" Wide
- Made from Billet 6061 Aircraft Grade Aluminum
- Available in Anodized Black, Red, Gold. Also available in Chrome Finish
- Replaceable Cone-Shaped Stainless Steel Cleats. 24 per Floorboard For Increased Grip
- Thin Platform For Increased Ground Clearance

### Fitment:

Fits Harley-Davidson Touring Models (Road Glide, Street Glide, Road King, etc.)

### NOTES:

- 2024+ CVO ST Front Floorboard Mounts will need to be changed to HD Part # 472003-02A Qty:2
- \* Will not fit on 2018+ Softail Models



### PART #

### DESCRIPTION

#### AGGRESSOR FLOORBOARDS

1621-1235	Aggressor Floorboards - Black
1621-1236	Aggressor Floorboards - Red
1621-1237	Aggressor Floorboards - Gold
1621-1238	Aggressor Floorboards - Chrome

## AGGRESSOR BRAKE PEDAL

- Measures: 3.25" x 1.675"
- Constructed from 6061 aircraft-grade aluminum
- Replaceable Cone-Shaped Stainless Steel Cleats for Increased Grip
- Includes mounting hardware

### FITMENT:

- Fits Harley-Davidson Touring Models ( Road Glide, Street Glide, Road King, etc)

### NOTES:

- This pedal only works with our THRASHIN Adjustable Bagger Brake Arm (Stock Length Adjustable Bagger Brake Arm Part # 1610-0594 & 1610-0596" Shorter Adjustable Bagger Brake Arm Part # 1610-0596)
- DOES NOT work with THRASHIN® Adjustable Softail Brake Arm or Dyna Brake Arm



PART #	DESCRIPTION
<b>AGGRESSOR BRAKE PEDAL</b>	
0610-0762	Aggressor Brake Pedal - Black
0610-0763	Aggressor Brake Pedal - Red
0610-0764	Aggressor Brake Pedal - Gold
0610-0765	Aggressor Brake Pedal - Chrome

## AGGRESSOR BRAKE PAD

- Each pedal measures 4.75" x 2.75" with fourteen replaceable cone-shaped cleats
- Made with billet 6061 aircraft grade aluminum
- Hardware included
- Designed to mount on stock bagger brake arm
- Pairs well with Aggressor Floorboards and Shifter Pegs (sold separately)

### NOTES:

- To use with Thrashin Adjustable Bagger Brake Arm, must use Thrashin Brake Pedal Pad Mount part #1610-0602.



PART #	DESCRIPTION
<b>AGGRESSOR BAGGER BRAKE PAD</b>	
1611-0105	Aggressor Brake Pad - Black
1611-0106	Aggressor Brake Pad - Red
1611-0107	Aggressor Brake Pad - Gold
1611-0107	Aggressor Brake Pad - Chrome

## AGGRESSOR SHIFTER PEGS

- Measures 2-1/4" x 1-1/4"
- Shifter peg designed to provide a grippy responsive shift
- Featuring seven replaceable cone-shaped stainless steel cleats on the top and a smooth underside
- Also work great as a brake pedal for the Thrashin Softail Brake Arm
- Constructed from 6061 aircraft-grade aluminum
- Includes mounting hardware

### FITMENT:

- Fits on all Harley-Davidson model shift levers & THRASHIN® Billet Shift Levers
- Also works great on our THRASHIN® Softail Brake ARM (Part #'s 1610-0696 & 1610-0697)

### NOTES:

- DOES NOT work with our THRASHIN® Adjustable bagger Brake Arm



PART #	DESCRIPTION
<b>AGGRESSOR SHIFTER PEGS</b>	
1603-0422	Aggressor Shifter Peg - Black
1603-0423	Aggressor Shifter Peg - Red
1603-0424	Aggressor Shifter Peg - Gold
1603-0425	Aggressor Shifter Peg - Chrome

# AGGRESSOR FOOT CONTROLS



## AGGRESSOR FOOT PEGS

These foot pegs are designed to provide the maximum amount of grip and improve ground clearance while maintaining a sleek and timeless design.

Featuring 12 cone-shaped stainless steel cleats per footpeg, and a cutaway design to improve lean angle. These footpegs not only look great but will improve the feel of your motorcycle.

### Specs:

- Footpegs Measure: 3.5" Wide x 2.25" Long
- Made From Billet 6061 Aircraft Grade Aluminum
- Anodized Black Finish
- Replaceable Cone-Shaped Stainless Steel Cleats  
12 Per Footpeg
- Cutaway Design For Increased Ground Clearance  
Aluminum Clevis
- Sold as a pair

### Fitment:

- Fits Dyna, Sportster, FXR, and Softail models  
(Select Appropriate Clevis)
- Fits Touring Rear (Standard Clevis)



### PART #

### DESCRIPTION

#### AGGRESSOR FOOT PEGS

1620-2769	Aggressor Foot Pegs - Black
1620-2770	Aggressor Foot Pegs - Red
1620-2771	Aggressor Foot Pegs - Gold
1620-2772	Aggressor Foot Pegs - Chrome
1620-2773	Aggressor Foot Pegs - M8 Softail Front - Black
1620-2775	Aggressor Foot Pegs - M8 Softail Front - Red
1620-2776	Aggressor Foot Pegs - M8 Softail Front - Gold
1620-2777	Aggressor Foot Pegs - M8 Softail Front - Chrome
1620-2778	Aggressor Foot Pegs - M8 Softail Rear - Black
1620-2779	Aggressor Foot Pegs - M8 Softail Rear - Red
1620-2780	Aggressor Foot Pegs - M8 Softail Rear - Gold
1620-2781	Aggressor Foot Pegs - M8 Softail Rear - Chrome

## AGGRESSOR MINI FLOORBOARDS

These mini floorboards are designed to provide the maximum amount of grip and improve ground clearance while maintaining a sleek and timeless design.

Featuring 20 cone-shaped stainless steel cleats per floorboard, and placed on a mini floorboard shape. These boards not only look great but will improve the feel of your motorcycle.

### Specs:

- Mini Floorboards Measure: 4.75" Long x 3.5" Wide
- Billet 6061 Aircraft Grade Aluminum
- Anodized Black Finish
- Replaceable Cone-Shaped Stainless Steel Cleats 20 Per Floorboard
- Cutaway Design For Increased Ground Clearance
- Aluminum Clevis

### Fitment:

- Fits Dyna, Sportster, FXR, and Softtail models (Select Appropriate Clevis)
- Fits Touring Rear (Standard Clevis)

### NOTES:

- 2024+ CVO ST Front Floorboard Mounts will need to be changed to HD Part # 472003-02A Qty:2
- \* Will not fit on 2018+ Softtail Models



### PART #

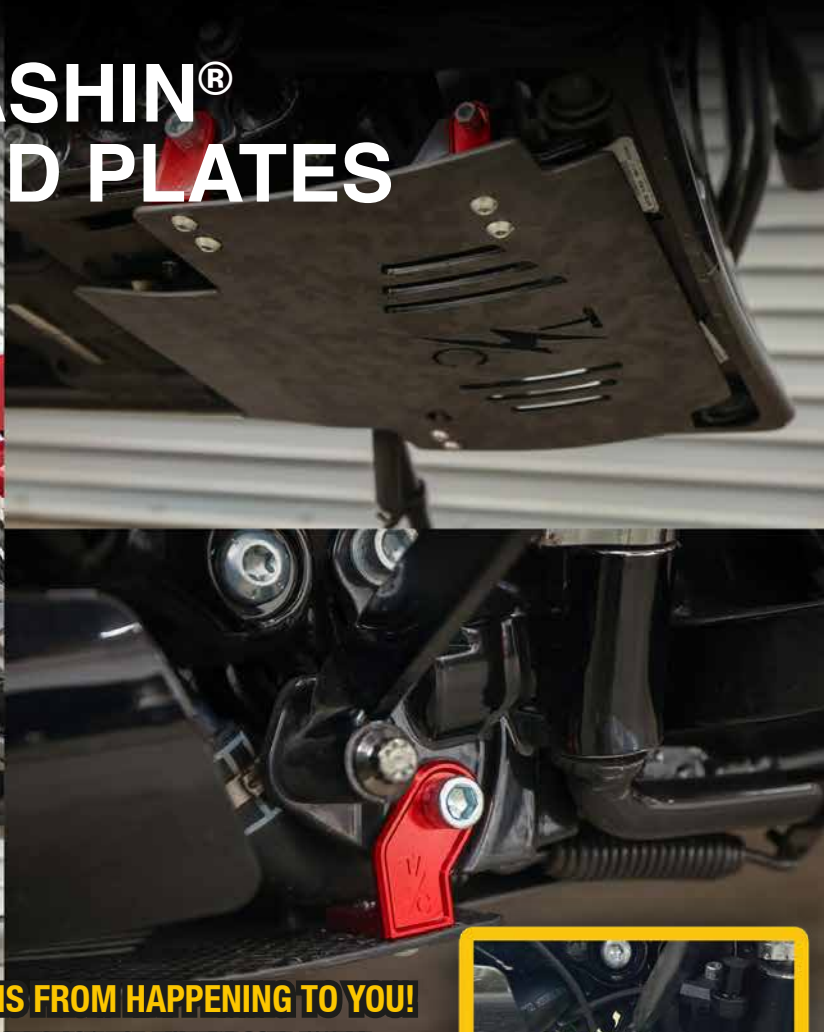
### DESCRIPTION

#### AGGRESSOR FOOT PEGS

1621-1227	Aggressor Foot Pegs - Black
1621-1228	Aggressor Foot Pegs - Red
1621-1229	Aggressor Foot Pegs - Gold
1621-1230	Aggressor Foot Pegs - Chrome
1621-1231	Aggressor Foot Pegs - M8 Softail Front - Black
1621-1232	Aggressor Foot Pegs - M8 Softail Front - Red
1621-1233	Aggressor Foot Pegs - M8 Softail Front - Gold
1621-1234	Aggressor Foot Pegs - M8 Softail Front - Chrome



# THRASHIN® 2024+ SKID PLATES



**AVOID THIS FROM HAPPENING TO YOU!**

**PROVIDES PROTECTION FOR THE EXPOSED WATER LINE AND WIRING FOUND BETWEEN THE FRAME AND RADIATOR ON 2024+ TOURING MODELS, THIS IS VITAL TO PROTECT AGAINST DAMAGES THAT WILL LEAVE YOU STRANDED ON THE ROAD, MILES FROM HELP.**



## THRASHIN® CARBON FIBER SKID PLATE - GLOSS WEAVE

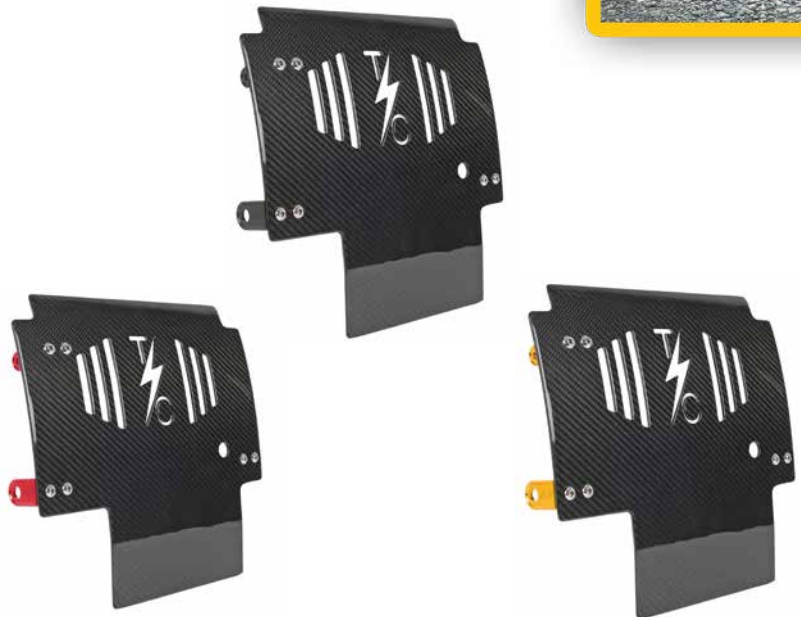
Our 2024+ Touring Skid Plate in gloss twill carbon provides protection for the exposed water line and wiring found between the frame and radiator on 2024+ touring models. This is vital to protect against damages that will leave you stranded on the road, miles from help.

### Specs:

- Constructed from Real Woven Carbon Fiber
- Billet 6061 Aluminum Brackets - Anodized Finish
- 11.5" L x 11.5" W
- 0.125" Thick
- Hardware Included, Easy Install

### Fitment:

- 2024+ Road Glide: FLTRX/FLTRXSE/FLTRXSTSE
- 2024+ Street Glide: FLHX/FLHXS/FLHXSE



### PART #

### DESCRIPTION

#### GLOSS WEAVE SKID PLATES

0506-2529	Carbon Fiber Skid Plate - Gloss Weave, Black Brackets
0506-2530	Carbon Fiber Skid Plate - Gloss Weave, Red Brackets
0506-2531	Carbon Fiber Skid Plate - Gloss Weave, Gold Brackets

## THRASHIN® CARBON FIBER SKID PLATE - MATTE FORGED

Our 2024+ Touring Skid Plate in matte forged carbon provides protection for the exposed water line and wiring found between the frame and radiator on 2024+ touring models. This is vital to protect against damages that will leave you stranded on the road, miles from help.

### Specs:

- Constructed from Real Forged Carbon Fiber
- Billet 6061 Aluminum Brackets - Anodized Finish
- 11.5" L x 11.5" W
- 0.125" Thick
- Hardware Included, Easy Install

### Fitment:

- 2024+ Road Glide: FLTRX/FLTRXSE/FLTRXSTSE
- 2024+ Street Glide: FLHX/FLHXS/FLHXSE



PART #	DESCRIPTION
--------	-------------

### FORGED WEAVE SKID PLATE

0506-2532	Carbon Fiber Skid Plate, Forged Weave, Black Brackets
0506-2533	Carbon Fiber Skid Plate, Forged Weave, Red Brackets
0506-2534	Carbon Fiber Skid Plate, Forged Weave, Gold Brackets

## THRASHIN® ORIGINAL SKID PLATE - ALUMINUM

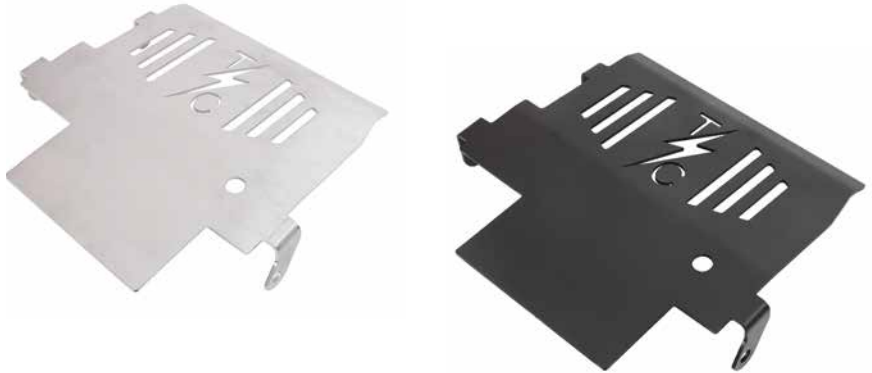
Our 2024+ Touring Skid Plate available in aluminum provides protection for the exposed water line and wiring found between the frame and radiator on 2024+ touring models.

### Specs:

- Constructed from 5052 Aluminum
- 0.125" Thick
- Raw Aluminum & Black Anodized Finish
- Easy Install With Factory Hardware

### Fitment:

- 2024+ Road Glide: FLTRX/FLTRXSE/FLTRXSTSE
- 2024+ Street Glide: FLHX/FLHXS/FLHXSE



PART #	DESCRIPTION
--------	-------------

### THE ORIGINAL 2024+ ALUMINUM SKID PLATE

0506-2362	2024+ Aluminum Skid Plate - Raw
0506-2363	2024+ Aluminum Skid Plate - Black

## THRASHIN® STAMPED STEEL SKID PLATE

Our 2024+ Touring Skid Plate now available in stamped steel with a powdercoated finish provides protection for the exposed water line and wiring found between the frame and radiator on 2024+ touring models.

### Specs:

- Constructed From 12-gauge Alloy-Steel
- Vented For Better Air-Flow
- Powder-Coated Black Finish
- Easy Install With Factory Hardware

### Fitment:

- 2024+ Road Glide: FLTRX/FLTRXSE/FLTRXSTSE
- 2024+ Street Glide: FLHX/FLHXS/FLHXSE



PART #	DESCRIPTION
--------	-------------

### 2024+ STAMPED STEEL SKID PLATE

0506-2620	2024+ Stamped Steel Skid Plate - Black
-----------	--

# THRASHIN® LUGGAGE



## ESSENTIAL SADDLEBAGS - 10 LITER

Designed with the idea of creating storage for your bike without the bulk of full size saddlebags. Go the distance with these sleek, light weight and durable bags that provide just enough space for the essentials, allowing you to go where the road takes you.

- Dimensions: 11" L x 5" W x 8" H
- 10 liter combined storage capacity
- One-piece "L" shaped backing for increased load capacity
- Made of 1680D Denier Ballistic Nylon
- Easy on, easy off installation
- MOLLE Attachments for Universal anchoring points to secure the bag down, as well as, use for additional attachments
- YKK® Zipper exterior pocket
- Adjustable yoke
- Hi-Viz orange interior to improve interior visibility



- Works with Sissy Bar, fixed or detachable
- Bag mounting brackets included which are mounted in between strut & fender
- Works with most stock tail light and blinker assembly (Verify a minimum of 13" between bike's shocks and blinkers)

PART #	DESCRIPTION
--------	-------------

<b>ESSENTIAL SADDLEBAGS</b>	
-----------------------------	--

3501-1960	Fits: Most Softail, Dyna, FXR, XL, and Custom Models
-----------	--

## ESCAPE SADDLEBAGS - 18 LITER

The Escape Saddlebags were designed after the success of our Essential Saddlebags. Not only did we increased the dimensions to allow for longer trips, we also gave the bag more structure to allow for the extra weight. With the included Water Proof Covers these bags can go with you anywhere

- Dimensions: 13" L x 7" W x 9" H
- 18 liter combined storage capacity
- One-piece "L" shaped backing for increased load capacity
- 1680 denier ballistic nylon
- Hi-viz orange interior
- Waterproof rain cover included
- Molle attachment points
- YKK® zipper exterior pocket
- Easy-on, easy-off installation
- Maximum fender width of 12"



- Works with Sissy Bar, fixed or detachable
- Bag mounting brackets included which are mounted in between strut & fender
- Works with most stock tail light and blinker assembly (Verify a minimum of 13" between bike's shocks and blinkers)

PART #	DESCRIPTION
--------	-------------

<b>ESCAPE SADDLEBAGS</b>	
--------------------------	--

3501-1961	Fits: Most Softail, Dyna, and Custom Models
-----------	---

## EXPEDITION SADDLEBAGS - 21 LITER

The Expedition Saddlebags are perfect for any journey. These bags feature a sleek modern design, durable materials, and structured construction for long lasting use. With universal molle webbing and a wide range of accessories these bags are road trip ready.

- 21 liter combined storage capacity
- One piece "L" shaped backing and bottom structure
- 1680 denier ballistic nylon
- Hi-viz orange interior
- MOLLE attachments for universal anchoring points to secure the bag down as well as use for additional attachments
- Easy access lid with metal g-hooks open up to main compartment
- Side release buckles on top of lid allow for additional attachment
- Interior mesh pocket on top of lid and back of the bag
- Comes with internal stuff sacks
- YKK® zippers
- Easy on, easy off Installation with throw over design



- Works with Sissy Bar, fixed or detachable
- Bag mounting brackets included which are mounted in between strut & fender
- Works with most stock tail light and blinker assembly (Verify a minimum of 15" between bike's shocks and blinkers)
- Maximum fender width 12"

**NOTES:**  
Optional cooler bag insert sold separately.

PART #	DESCRIPTION
<b>EXPEDITION SADDLEBAGS</b>	
3501-1963	Fits: Most Softail, Dyna, and Custom Models
3511-0030	Cooler Bag - Fits Expedition Saddlebags Only



3501-2168



3501-2169



3501-2170



## THRASHIN® BASE SADDLEBAGS

We stripped down our original design for a clean minimalist look. Tried and true construction paired with our durable materials allow you to go where ever the road takes you.

- 1680 Denier ballistic nylon
- TPU material with black on black THRASHIN print
- Hi-viz orange interior
- Molle attachment points on top of lid
- Pair with our Strap Kit & Passenger Bag (sold separately)
- Easy-on, easy-off installation
- Fits on a wide variety of motorcycles

- Mini Essential - Dimensions: 8.5" L x 7.5" H x 5" D
- Essential Base - Dimensions: 11" L x 8" H x 5" D
- Escape Base - Dimensions: 13" L x 9" H x 6" D
- Bag mounting brackets included, which are mounted in between strut and fender

PART #	DESCRIPTION
<b>MINI ESSENTIALS &amp; BASE SADDLEBAGS</b>	
3501-2168	Fits: Sportser XL Models w/ turn signals, Dyna, FXR, Softail & Custom Models
3501-2169	Fits: Most Softail, Dyna, FXR, and Custom Models
3501-2170	Fits: Most Softail, Dyna, and Custom Models

# THRASHIN® LUGGAGE



## PASSENGER BAG - 32 LITER

This versatile motorcycle luggage is loaded with tons of features guaranteed to make your travels as smooth as possible.

- 32 L (8.45 gallon) total storage capacity
- Double Zippers Expand Bag From 17" Long to 20"
- Made from 1680 D ballistic nylon & water resistant polyurethane fabric
- High vis orange 900 D Polyester interior
- Hidden zipper compartment for rain cover and backpack straps
- Four provided straps allow for wide range of mounting to any motorcycle; Can also be worn as a backpack
- Sewn on straps on the back of the bag for mounting to Sissybars
- Straps with side release buckles on the top of the bag allow for additional mounting of goods



PART #	DESCRIPTION
--------	-------------

<b>PASSENGER BAG</b>	
3515-0237	Universal Mounting

## MISSION DUFFLE BAG

Designed with the idea that you could hit the road for a few days, or a few weeks, knowing you have everything you need for the adventure ahead.

- Top-loading opening allows for the removal of a jacket or rain gear without detaching the bag from the bike
- Includes two 1.5" buckle straps, six D-rings and MOLLE webbing for secure attachment
- Waterproof cover fits over both the bag and sissy bar for complete coverage
- Main opening gives quick access when the bag is lying down
- Dirty clothes divider separates clean clothes from the worn
- High-visibility interior color



PART #	DESCRIPTION
--------	-------------

<b>MISSION DUFFLE BAG</b>	
3512-0269	Universal Mounting System

## HARD MOUNT BRACKETS

Designed specifically for our Essential, Escape, and Expedition Saddlebags!

- Ability to raise and lower the height of the bracket by 1/2" up and down
- Hardware and spacers for a variety of models
- Black powder-coated mild steel
- Comes with left & right specific brackets
- Easy Installation

### NOTES:

- Will work with other models such as Sportster, FXR, and custom applications but will need different hardware and spacers. Blinkers may also need to be relocated
- Will work with both hard mount and detachable sissy bars; may require additional hardware to pair with your docking hardware.



PART #	DESCRIPTION
--------	-------------

### HARD MOUNT BRACKETS

3501-1962	For 18-24 Softail and 00-17 Dyna
-----------	----------------------------------

## TOOL ROLL

- 1680 D ballistic nylon exterior
- High-vis orange interior
- 6-Tool Pockets
- 1 Zipper pocket
- Works great with Thrashin Handlebar Bags (sold separately)



- \* Does not come with tools



PART #	DESCRIPTION
--------	-------------

### TOOL ROLL

3510-0177	Works w/ TSC Handlebar Bag
-----------	----------------------------

## FUEL BOTTLE HOLSTER

- Holds up to a 12" x 3.5" estimated 1 liter bottle, including the MSR fuel bottle (sold separately)
- Universal Molle webbing attachment
- 1680 Ballistic Nylon with a drawcord closure



PART #	DESCRIPTION
--------	-------------

### FUEL BOTTLE HOLSTER

3550-0415	Universal molle web. attachment
-----------	---------------------------------

## STRAP KIT

- Designed specifically for direct attachment of our Thrashin Passenger Bag, the opposing side release buckles allow you to mount our Passenger Bag easily without a sissy bar/backrest
- Also works for mounting other goods to the top or sides of Thrashin Saddlebags



PART #	DESCRIPTION
--------	-------------

### STRAP KIT

3550-0416	For Essential & Escape Saddlebags
-----------	-----------------------------------

## MULTI USE POUCH

- Made of 1680 D ballistic nylon
- High visibility orange interior
- Universal Molle webbing attachment
- Dimensions: 7" x 5" x 2.5"



PART #	DESCRIPTION
--------	-------------

### MULTI USE POUCH

3501-1976	Universal molle web. attachment
-----------	---------------------------------

# THRASHIN® HANDLEBAR BAGS



## OG HANDLEBAR BAG

This is the ultimate everyday bag for short trips or long trips!

- Dimensions: 7" x 5" x 3.25"
- 1680D Denier Ballistic Nylon
- High Vis Orange Interior
- YKK Zippers
- MOLLE Webbing in front and rear of bag for multiple points for attaching gear
- 4 interior pockets and 2 exterior pockets
- Vertical & Horizontal attachment points to mount to risers and/or bars in multiple configurations for different size risers using Velcro straps
- Buckle straps included for Thrashin Tool Roll compatibility



PART #	DESCRIPTION
<b>ORIGINAL HANDLEBAR BAG</b>	
3510-0103	Original Handlebar Bag - Mounts to risers & handlebars.

## HANDLEBAR BAG PLUS

This bar bag is slightly larger than our OG handlebar bag and features a microfiber pocket to protect your glasses!

- Dimensions: 9" x 5" x 4"
- 1680 Denier Ballistic Nylon
- High Vis Orange Interior
- YKK Zippers
- 4 interior pockets and 2 exterior pockets
- Front Pocket lined with microfiber, specifically designed for glasses
- Works great on Handlebars, Risers, and Sissy Bars
- Vertical & Horizontal webbing for easy universal attachment
- Buckle straps included for Thrashin Tool Roll compatibility



PART #	DESCRIPTION
<b>HANDLEBAR BAG Plus</b>	
3510-0102	Handlebar Bag Plus - Mounts to risers & handlebars.

## HANDLEBAR BAG SLIM

Slim storage with the ability to expand to fit a variety of items. Its versatile design allows it to mount on the front or rear of risers while providing a slim profile to fit in between fairings and gas tanks.

- Dimensions: 9" x 8" x 2"
- 1680D Denier Ballistic Nylon
- High Vis Orange Interior
- Front Velcro Pocket Expands and is lined with microfiber material, great for sunglasses or electronics
- MOLLE webbing on front pocket
- Vertical and Horizontal attachment points mount to risers and/or bars in multiple configurations for different size risers using Velcro straps
- YKK Zipper



PART #	DESCRIPTION
--------	-------------

<b>HANDLEBAR BAG Plus</b>	
---------------------------	--

3510-0102	Handlebar Bag Plus - Mounts to risers & handlebars.
-----------	---

## WATERPROF HANDLEBAR BAG

When you are on the open road, you never know when the weather can turn. Be prepared with the THRASHIN® waterproof handlebar bag.

- 9" x 6" x 3.5" dimensions
- 100% Waterproof Handlebar Bag/Pouch
- TPU welded Construction
- Air-tight waterproof zipper
- Welded molle webbing on front of pouch
- Vertical and horizontal webbing on back for attachment to risers and/or bars.



PART #	DESCRIPTION
--------	-------------

<b>WATERPROOF HANDLEBAR BAG</b>	
---------------------------------	--

3510-0190	Waterproof Handlebar Bag - Mounts to risers & handlebars.
-----------	---

## UTILITY BAG

The TSC Utility bag is the ideal handlebar bag for high-rise handlebars and ape-hangers. Especially Stock Street Bob, Forty-Eight Special, Iron 1200, and Road King Bars. Constructed from 1680 Ballistic Nylon and surrounded by MOLLE Webbing on all sides Gives you a durable bag and a universal fit.

- Dimensions: 9" x 4" x 3.5"
- 1680 D Ballistic Nylon
- High Vis Orange Interior
- YKK Zipper
- 4 x Hook & Loop Straps for use with MOLLE Webbing
- MOLLE Webbing on all sides for universal fit



PART #	DESCRIPTION
--------	-------------

<b>UTILITY BAG</b>	
--------------------	--

3510-0101	Utility Bag - Mounts to risers & handlebars.
-----------	--

# THRASHIN<sup>®</sup> HANDLEBAR BAGS



## OG HANDLEBAR BAG

This is the ultimate everyday bag for short rips or long trips! Now available in a wide range of colors.



3510-0193



3510-0194



3510-0195



3510-0196



3510-0197



3510-0198



3510-0199

### PART #

### DESCRIPTION

#### COLORED OG HANDLEBAR BAGS

3510-0193	OG Handlebar Bag - Brown
3510-0194	OG Handlebar Bag - Green
3510-0195	OG Handlebar Bag - Red
3510-0196	OG Handlebar Bag - Grey
3510-0197	OG Handlebar Bag - Blue
3510-0198	OG Handlebar Bag - Purple
3510-0199	OG Handlebar Bag - Orange

## HANDLEBAR BAG PLUS

This bar bag is slightly larger than our OG handlebar bag and features a microfiber pocket to protect your glasses! Now available in a wide range of colors.



3510-0200



3510-0201



3510-0202



3510-0204



3510-0205



3510-0206



3510-0207

### PART #

### DESCRIPTION

#### COLORED OG HANDLEBAR BAGS

3510-0200	Handlebar Bag Plus - Brown
3510-0201	Handlebar Bag Plus - Green
3510-0202	Handlebar Bag Plus - Red
3510-0204	Handlebar Bag Plus - Grey
3510-0205	Handlebar Bag Plus - Blue
3510-0206	Handlebar Bag Plus - Purple
3510-0207	Handlebar Bag Plus - Orange

## HANDLEBAR BAG SLIM

Slim storage with the ability to expand to fit a variety of items. Now available in a wide range of colors.



3510-0212



3510-0211



3510-0209



3510-0208



3510-0213



3510-0210



3510-0214

### PART #

### DESCRIPTION

#### COLORED OG HANDLEBAR BAGS

3510-0212	Handlebar Bag Slim - Blue
3510-0211	Handlebar Bag Slim - Grey
3510-0209	Handlebar Bag Slim - Green
3510-0208	Handlebar Bag Slim - Brown
3510-0213	Handlebar Bag Slim - Purple
3510-0210	Handlebar Bag Slim - Red
3510-0214	Handlebar Bag Slim - Orange

# THRASHIN<sup>®</sup> x SADDLEMEN



## THRASHIN<sup>®</sup> PRO SERIES SEATS

After years of collaborating on our personal bikes and custom builds, it only seemed fitting to offer a seat to the public that not only bears the Thrashin<sup>®</sup> logo, but is also custom tailored to how we prefer our seats to look and feel on our personal bikes.

Designed in collaboration with Saddlemen, these seats were developed using direct feedback from Lance and Juan to create a sleek, comfortable 2-up seat.

Inspired by the open road, the seat features a slimmer nose for increased legroom and freedom of movement, while still providing supportive back support for long hours in the saddle.

### Specs:

- Low profile and contoured for comfort
- GelCore™ technology inside (driver) reduces tailbone pressure and increases circulation and comfort
- The streamlined design is optimized for performance riding and aids the rider's reach to the ground
- GelCore™ technology reduces road impacts and engine vibration by up to 50%
- Combines GelCore™ and Ultra-Foam to create a foam that is a perfect balance of rigidity and user compliance
- Ultra-Foam's unique molding process creates an element-resistant selfskinning process that seals the foam and enhances the seat's durability
- Featuring whisper Saddlehyde
- Includes mounting hardware
- Made in the USA



### Dyna '96-'03 Thrashin Pro Series Seats

PART #	DESCRIPTION
<b>SMOOTH</b>	
0803-0769	Thrashin' Pro Series Seat - Smooth - Dyna '96-'03
<b>TUCK AND ROLL</b>	
0803-0770	Thrashin' Pro Series Seat - Tuck-n-Roll - Dyna '96-'03

### FITMENT:

• 1996 - 2003 Dyna (FXD, FXDX, FXDWG, FXDL)



### Dyna '06-'17 Thrashin Pro Series Seats

PART #	DESCRIPTION
<b>SMOOTH</b>	
0803-0761	Thrashin' Pro Series Seat - Smooth - Dyna '06-'17
<b>TUCK AND ROLL</b>	
0803-0762	Thrashin' Pro Series Seat - Tuck-n-Roll - Dyna '06-'17

### FITMENT:

• 2006 - 2017 Dyna (FXD, FXDWG, FLD)



**FXLR/FLSB '18-'26 Thrashin Pro Series Seats**

PART #	DESCRIPTION
<b>SMOOTH</b>	
0802-1667	Thrashin' Pro Series Seat - Smooth - FXLR/FLSB '18-'25
<b>TUCK AND ROLL</b>	
0802-1668	Thrashin' Pro Series Seat - Tuck-n-Roll - FXLR/FLSB '18-'25

**FITMENT:**  
 • 2018 - CURRENT Softail Lowrider (FXLR, FLXRS, FLXRST, Sport Glide FLSB)

**FX '18-'26 Thrashin Pro Series Seats**

PART #	DESCRIPTION
<b>SMOOTH</b>	
0802-1669	Thrashin' Pro Series Seat - Smooth - FX '18-'25
<b>TUCK AND ROLL</b>	
0802-1670	Thrashin' Pro Series Seat - Tuck-n-Roll - FX '18-'25

**FITMENT:**  
 • 2018 - CURRENT Softail Street Bob (FXBB/S, Standard FXST)



**FLH/FLT '08-'23 Thrashin Pro Series Seats**

PART #	DESCRIPTION
<b>SMOOTH</b>	
0801-2134	Thrashin' Pro Series Seat - Smooth - FLH/FLT '08-'23
<b>TUCK AND ROLL</b>	
0801-2135	Thrashin' Pro Series Seat - Tuck-n-Roll - FLH/FLT '08-'23

**FITMENT:**  
 • 2008 - 2023 Touring (FLHR, FLHT, FLHX & FLTR) \*Does not fit Trike or 2023 CVO models

**FLT/FLH '23-'26 Thrashin Pro Series Seats**

PART #	DESCRIPTION
<b>SMOOTH</b>	
0801-2136	Thrashin' Pro Series Seat - Smooth - FLT/FLH '23-'26
<b>TUCK AND ROLL</b>	
0801-2137	Thrashin' Pro Series Seat - Tuck-n-Roll - FLT/FLH '23-'26

**FITMENT:**  
 • 2023 - 2026 Touring: FLTRX/FLTRXSE/FLTRXSTSE/FLHX/FLHXS/FLHXSE



# THRASHIN



DISTRIBUTED BY

**PARTS**  
**EUROPE**

Parts Europe GmbH  
Conrad-Röntgen-Straße 2  
54332 Wasserliesch/Trier  
(Germany)

Tel.: +49 (0) 6501 9695 - 2000  
Fax: +49 (0) 6501 9695 - 2650  
E-Mail: [sales@partseurope.eu](mailto:sales@partseurope.eu)  
Web: [www.partseurope.eu](http://www.partseurope.eu)

**DRAG**  
Specialties