



SLIPPERY

2020









After 30 years of racing, freestyle and play-riding, we've learned a thing or two about comfort and confidence out on the water. Slippery wetsuits, vests, boots and accessories are purpose-built to help riders maximize the enjoyment that time on the water brings to us all. Whether enjoying a weekend cruise with the family, or in hot pursuit of another World Title, Slippery products have got you covered.

## Contents

04-09	Wetsuits
10-15	Vests
16-19	Gloves
20-23	Boots / Shoes
24-25	Rashguards / Sportswear
26-29	Bars / Levers / Accessories
31	Fit / Sizing Guide



# Breaker

## JOHN & JACKET

Designed for active riders, the Breaker John & Jacket combo offers excellent performance and mobility while providing a lightweight layer between you and the watercraft. This versatile suit allows you to take control of the elements by utilizing the pieces individually or together for maximum warmth and coverage.

### TECH

2mm Neoprene / Flat-stitched seams for ultimate comfort / Front-zip jacket  
1.5mm Tatex at knee for abrasion resistance / Hook and loop shoulder closure on john  
Keep-Key pocket on john / 1.5mm Airprene calf allows water to drain

COLOR		S	M	L	XL	2XL	3XL
CH/BK	3201-	0258	0259	0260	0261	0262	0263
BK/LM	3201-	0264	0265	0266	0267	0268	0269

▲ FIT GUIDE ON PAGE 31

FLAT-LOCK  
STITCHING SYSTEM



BLACK/LIME



JACKET VIEW



JOHN VIEW



BACK VIEW





CHARCOAL/BLACK





# Breaker

P R O

Designed with the serious competitor in mind, the brand-new Breaker Pro is maximized to provide comfort, flexibility and breathability in one sleek package. Coupled with a glide skin chest panel to keep the rider's core temperature optimal, the Breaker Pro is a formidable piece of equipment on the water.

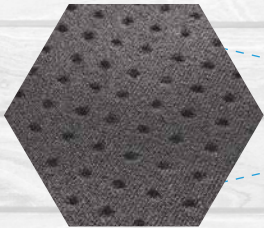
## TECH

- 1.5mm airprene construction / 1.5mm glide skin at chest for added comfort
- 1.5mm Tatex at knee for abrasion resistance / Hook and loop shoulder closure
- Flat-stitched seams / Keep-Key pocket

COLOR	S	M	L	XL	2XL	3XL
BK 3201-	0252	0253	0254	0255	0256	0257

▲ FIT GUIDE ON PAGE 31

FLAT-LOCK  
STITCHING SYSTEM



AIRPRENE CHASSIS



BLACK





BACK VIEW









BLACK/LIME

BACK VIEW

## Breaker

### SPRING SUIT

As water conditions get warmer, you still need to keep your torso warm and insulated from splash and windchill. Our Breaker Spring Suit features 2mm neoprene construction for great flexibility and comfort while keeping the chill out.

#### TECH

2mm neoprene / Flat-stitched seams for ultimate comfort

3/4 zipper for added lower back flex and ease of entry / Keep-Key pocket

COLOR	S	M	L	XL	2XL
BK/LM 3210-	0081	0082	0083	0084	0085

▲ FIT GUIDE ON PAGE 31

FLAT-LOCK  
STITCHING SYSTEM



BLACK

BACK VIEW

## Tour

### COAT

The ideal addition for those cold days on the water or on the shore. Oversized cut allows the Tour Coat to be worn over your PFD.

#### TECH

2mm neoprene construction / Heavy-duty, two-way front zip / Flat-stitched seams

2 front zip pockets with mesh drainage ports / Removable hood

COLOR	S/M	L/XL
BK 3270-	0047	0048

▲ FIT GUIDE ON PAGE 31

FLAT-LOCK  
STITCHING SYSTEM



# Surge

NEO VEST

The unique segmented foam design provides multiple hinge points for greater flexibility and comfort. The Surge Neo Vest is a serious performer that offers aggressive styling for great visibility on the water.

## TECH

U.S. Coast Guard approved Type 3 PFD / Two 1.5" adjustable belts with buckle closure  
Hidden back belts / Heavy-duty zipper / "D" ring for clip style lanyards / Safety whistle  
Tested and certified according to standard EN ISO 12402-5 and EN ISO 12402-6

COLOR		XS	S	M	L	XL	2XL	3XL
LM/BK	3240-	0793	0794	0795	0796	0797	0798	0799
BK/CH	3240-	0800	0801	0802	0803	0804	N/A	0806



▲ FIT GUIDE ON PAGE 31



BLACK/CHARCOAL



LIME/BLACK





BACK VIEW

NEON YELLOW/BLACK

## Impulse

NYLON VEST

Great value and styling in an economical package. The Impulse Vest is ideal for recreational use and offers a universal fit that's adjustable for riders of all shapes and sizes.

### TECH

U.S. Coast Guard approved Type 3 PFD / Lightweight foam and nylon construction

Three 1" belts with heavy-duty buckles for support / "D" ring for clip style lanyards

Safety whistle / Tested and certified according to standard EN ISO 12402-5

COLOR	UNIVERSAL
NY/BK 3240-	0781

TYPE 3 PFD  
COAST GUARD APPROVED

D-RING SYSTEM  
FOR CLIP STYLE LANYARDS

▲ FIT GUIDE ON PAGE 31



# Hydro

NYLON VEST

The ideal all-around vest offering exceptional performance, style and value. The Hydro Vest provides a comfortable, secure fit and is very lightweight for reduced fatigue.

## TECH

- U.S. Coast Guard approved Type 3 PFD / "D" ring for clip style lanyards
- Four 1.5" belts with heavy-duty buckles for support
- Hinged chest panel for better fit / Lightweight nylon construction
- Tested and certified according to standard EN ISO 12402-5 and EN ISO 12402-6

COLOR		XS	S/M	L/XL	SUPER L
YL/BK	3240-	0783	0784	0785	0807
RD/AQ	3240-	0814	0815	0816	0817
BK/CH	3240-	0819	0820	0821	0822



▲ FIT GUIDE ON PAGE 31



BLACK/CHARCOAL



RED/AQUA





YELLOW/BLACK



BACK VIEW



# Youth Hydro

## NYLON VEST

These vests are specifically designed for youth / child figures, comfortably allowing your youth to be in the water with you, having the same amount of fun as you.

### TECH

Fits 25 - 41 kilograms / 66 - 73 cm chest / U.S. Coast guard approved type 3 PFD

3-Belt closure system / "D" ring for clip style lanyards

Tested and certified according to standard EN ISO 12402-5 and EN ISO 12402-6

### COLOR

YL/BK 3242-0061



▲ FIT GUIDE ON PAGE 31

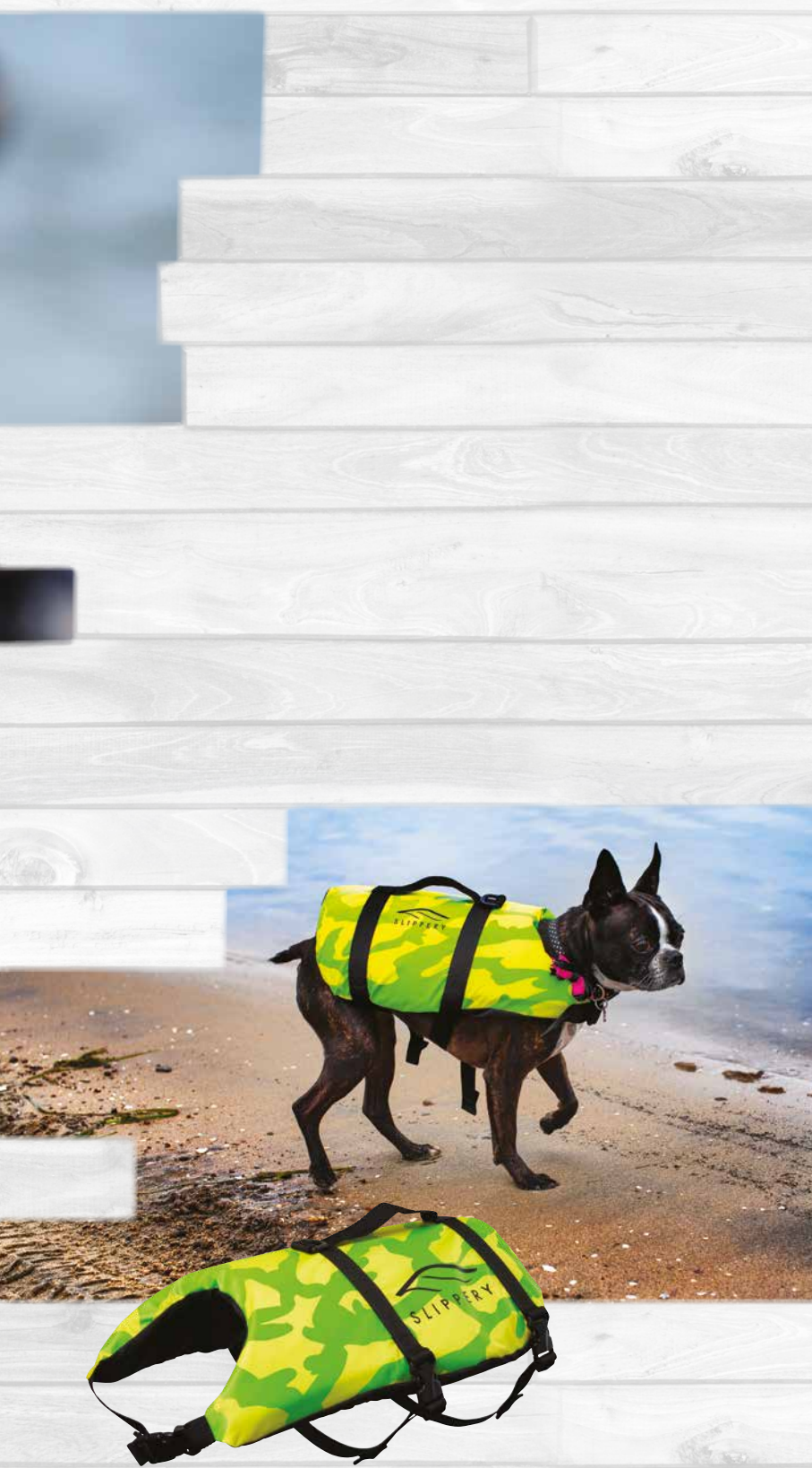


YELLOW/BLACK



BACK VIEW





YELLOW/GREEN

## Pet VEST

Honestly, why should “hoo-mans” get to have all the fun?

### TECH

Three adjustable belts with buckle closure / Carry handle at top

“D” ring for leash connection / Flo color for high visibility

COLOR	S	M	L
YL/GN 3240-	0845	0846	0847

TYPE III PFD  
COAST GUARD APPROVED

D-RING SYSTEM  
FOR CLIP STYLE LANYARDS



# Circuit

GLOVE

Performance, comfort and mobility are the traits the Circuit Glove inherited from its racing heritage. The Circuit Glove provides excellent grip while retaining a tactile feel.

## TECH

- TPR hook and loop closure / Perforated palm / Flat-stitch seams for comfort
- Anti-slip gel print on palm and fingertips / Innospan backhand for ultimate flexibility
- Integrated neoprene finger padding for added coverage

COLOR		XS	S	M	L	XL	2XL
BK	3260-	0402	0403	0404	0405	0406	0407
BK/RD	3260-	0408	0409	0410	0411	0412	0413
BK/LM	3260-	0414	0415	0416	0417	0418	0419
CH	3260-	0420	0421	0422	0423	0424	0425

ANTI-SLIP  
FINGERTIP GEL PRINT

FLAT-LOCK  
STITCHING SYSTEM

FIT GUIDE ON PAGE 31



PALM VIEW



BLACK/RED



BLACK/LIME



CHARCOAL



BLACK











# Flex Lite

## GLOVE

When you want an ideal fit without all the bulk, the Flex Lite glove has got you covered. Its perforated palm, silicone print for increased grip, and barely-there feel allows for maximum control and flexibility.

### TECH

Hook and loop wrist closure / 4-way stretch mesh / Sublimated fade-free graphics

Perforated palm / Anti-slip gel print on palm and fingertips

Reinforced thumb overlay

COLOR		XS	S	M	L	XL	2XL
CH	3260-	0378	0379	0380	0381	0382	0383
NV/OR	3260-	0384	0385	0386	0387	0388	0389
BK/LM	3260-	0390	0391	0392	0393	0394	0395
BK	3260-	0396	0397	0398	0399	0400	0401

**ANTI-SLIP**  
FINGERTIP GEL PRINT

▲ FIT GUIDE ON PAGE 31



PALM VIEW

NAVY/ORANGE



BLACK/LIME



CHARCOAL



BLACK



# Liquid

RACE BOOT

Lace up the Liquid Race Boot and feel the performance. Our Liquid Race Boot exceeds the functional demands of racers and riders alike. The molded outsole provides superior traction, support, and stability that can't be found in lightweight soles.

## TECH

- Internal heel and athletic sole structure provide stability / Anti-abrasion heel and toe
- Airmesh and perforated chassis for ventilation and drainage
- Pull-tabs & lacing system for fast and easy on/off / Removable 1.5mm neoprene booty

COLOR		XS	S	M	L	XL	2XL
BK	3261-	0157	0158	0159	0160	0161	0162
BK/LM	3261-	0151	0152	N/A	N/A	0155	N/A

▲ FIT GUIDE ON PAGE 31



BLACK





BLACK/LIME



# Amp

## BOOT

For those who want added coverage, the Amp Boot will keep your feet warm and protected while providing great support.

### TECH

2mm Neoprene / Flat-stitch construction for added comfort / Heel cup for support  
Molded rubber sole / Rear zip and locking draw cord for a secure fit

COLOR		XS	S	M	L	XL	2XL
BK	3261-	0170	0171	0172	0173	0174	0175
BK/LM	3261-	0145	0146	0147	0148	0149	0150

▲ FIT GUIDE ON PAGE 31



BLACK

# Amp

## SHOE

Lightweight and durable, the Amp Shoe will keep your feet warm and protected from the elements while providing great support.

### TECH

2mm Neoprene / Flat-stitch construction for added comfort / Heel cup for support  
Molded rubber sole / Barrel-lock draw cord closure

COLOR		2XS	XS	S	M	L	XL	2XL
BK	3261-	0163	0164	0165	0166	0167	0168	0169
BK/LM	3261-	0138	0139	0140	0141	0142	0143	N/A

▲ FIT GUIDE ON PAGE 31



BLACK





BLACK/LIME



BLACK/LIME



# Rashguards

LONG & SHORT SLEEVE

Protect yourself from vest and wetsuit chafing while keeping your skin protected from the sun's harmful rays.

## TECH

No rash pattern design / Flat-stitch Lycra construction / Form-fitting for style and comfort

LONG SLEEVE							
COLOR	XS	S	M	L	XL	2XL	3XL
BK/CAMO	3250-	0128	0129	0130	0131	0132	0133
						0133	0134

SHORT SLEEVE							
COLOR	XS	S	M	L	XL	2XL	3XL
BK/CAMO	3250-	0135	0136	0137	0138	0139	0140
						0140	0141

▲ FIT GUIDE ON PAGE 31







BLACK/CAMO

# Board

SHORTS

Wet or dry, on water or land, these classic trunks have got you covered.

## TECH

100% polyester for durability / 4 way stretch / Pocket drain eyelets  
Draw string closure at waist / Cargo pocket with key keeper / Knee length shorts

COLOR	28	30	32	34	36	38	40	42	44
BK/CAMO	3230-   0232	0233	0234	0235	0236	0237	0238	0239	0240

▲ FIT GUIDE ON PAGE 31



BLACK

WHITE

# Casuals

TEE SHIRT / TANK

Show your support for the sport and enjoy the comfort and quality offered by these great looking tops.

## TECH

100% cotton construction / Vibrant screen printed graphics  
Transfer-style neck labels for maximum comfort

COLOR	S	M	L	XL	2XL
BLACK TEE	3030-   17962	17963	17964	17965	17966

COLOR	S	M	L	XL	2XL
WHITE TANK	3030-   17957	17958	17959	17960	17961

▲ FIT GUIDE ON PAGE 31



# Throttle

LEVERS

Designed to clear grip to allow closer mounting to bar grips and hands

## TECH

Precision cnc machined from billet aluminum stock / Contours around index finger  
Three cable throw positions / Nylon cable support roller / Nylon bushing and thrust washers

### LEVERS

COLOR	PART#
BLACK	0632-0614
SILVER	0632-0615



# Bars

## STAND UP HANDLEBARS

## TECH

High grade aluminum construction is extremely durable / 7/8" diameter  
27.5" wide with knurled ends for extra grip adhesion  
0 and 4 degree versions are great for recreational, freestyle use  
Extended bars that offer better leverage and control / Cross bar pad included

ITEM	PART#	COLOR
D. HANDLEBAR 0 DEGREE	0601-2100	SILVER
E. HANDLEBAR 0 DEGREE	0601-2101	BLACK
F. HANDLEBAR 4 DEGREE	0601-2102	SILVER
G. HANDLEBAR 4 DEGREE	0601-2103	BLACK











Whistle

WHISTLE	PART#
NEON YELLOW	4850-0080



Lanyard

LANYARD	PART#
NEON YELLOW	4850-0078



Anchor Bag

ANCHOR BAG	PART#
NEON YELLOW	4850-0077



Whistle

WHISTLE	PART#
RED	4850-0005



Lanyard

LANYARD	PART#
RED	4850-0008



Key Float

KEY FLOAT	PART#
RED	4850-0006



PWC Bumper

PWC BUMPER	PART#
WHITE	4850-0081



22" Die-cut Decal

22" DIE-CUT DECAL - 55.88cm	PART#
WHITE	4320-0806



Key Float

KEY FLOAT	PART#
RED	4850-0079



6" Die-cut Decal

6" DIE-CUT DECAL - 15.24cm	PART#
2 PACK	4320-0805



Decal Pack

DECAL PACK	PART#
4 PACK	4320-0804



3' x 8' Banner

BANNER - 0.91m x 2.44m	PART#
BLACK	9905-0050





4-Section Rope

▲TECH

22,86m, 16 strand Performance water ski rope  
Floating aluminum tractor grip handle

4 SECTION TOW ROPE	PART#
MULTI COLOR	4808-0001



Inflatable Tow Rope

▲TECH

For 1 & 2 rider tubes / High strength 0.95cm rope  
18,29m long / Maximum rider weight 156.45kg

INFLATABLE ROPE	PART#
MULTI COLOR	4808-0003



Standard Rope

▲TECH

22,86m long, 16 strand Performance water ski rope  
1 Section Floating aluminum tractor grip handle

STANDARD ROPE	PART#
RED/BLUE	4808-0002



Floor Mat

DOOR MAT - 99.06cm W x 78.74cm H	PART#
BLACK - 39"W x 31"H	9905-0114







# Fit & Sizing

GUIDE

## Breaker Wetsuit

MEN'S	S	M	L	XL	2XL	3XL
HEIGHT	5'6" - 5'9"	5'8" - 5'11"	5'10" - 6'1"	5'11" - 6'3"	6'1" - 6'4"	6'2" - 6'5"
HEIGHT - EU	167 - 175 cm	172 - 180 cm	177 - 185 cm	180 - 190 cm	185 - 193 cm	187 - 195 cm
CHEST	35" - 37"	37" - 39"	39" - 41"	41" - 43"	43" - 45"	45" - 47"
CHEST - EU	88 - 93 cm	93 - 99 cm	99 - 104 cm	104 - 109 cm	109 - 114 cm	114 - 119 cm
WEIGHT (LBS.)	120 - 140	140 - 170	170 - 190	180 - 210	200 - 225	215 - 240
WEIGHT (KG)	54 - 63	63 - 77	77 - 86	81 - 95	90 - 102	97 - 108

## Men's Surge Vest

MEN'S	XS	S	M	L	XL	2XL	3XL
CHEST	28" - 32"	32" - 36"	36" - 40"	40" - 44"	44" - 48"	48" - 52"	52" - 56"
CHEST - EU	71 - 81 cm	81 - 91 cm	91 - 101 cm	101 - 111 cm	111 - 121 cm	121 - 132 cm	132 - 142 cm

## Men's Hydro Vest

MEN'S	XS	S/M	L/XL	2XL/3XL	4XL +
CHEST	28" - 32"	32" - 40"	40" - 50"	50" - 60"	60" - 70"
CHEST - EU	71 - 81 cm	81 - 101 cm	101 - 127 cm	127 - 152 cm	152 - 177 cm

## Men's Impulse Vest

MEN'S	UNIVERSAL	SUPER L
CHEST	30" - 52"	40" - 60"
CHEST - EU	76 - 132 cm	101 - 152 cm

## Pet Vest

VEST SIZE	WEIGHT (LBS.)	WEIGHT (KG)	NECK - USA	NECK - EU	CHEST - USA	CHEST - EU	WAIST - USA	WAIST - EU
XX-SMALL	Less than 8 lbs.	Less than 3.6 kg	Less than 10"	Less than 25 cm	Less than 18"	Less than 45 cm	Less than 14"	Less than 35 cm
X-SMALL	8 - 15 lbs.	3.6 - 6.8 kg	10" - 13"	25 - 33 cm	18" - 24"	45 - 60 cm	14" - 20"	35 - 50 cm
SMALL	15 - 30 lbs.	6.8 - 13 kg	12" - 16"	30 - 40 cm	22" - 28"	55 - 71 cm	18" - 24"	45 - 60 cm
MEDIUM	30 - 60 lbs.	13 - 27 kg	15" - 19"	38 - 48 cm	26" - 32"	66 - 81 cm	22" - 28"	55 - 71 cm
LARGE	60 - 80 lbs.	27 - 36 kg	18" - 22"	45 - 55 cm	30" - 38"	76 - 96 cm	26" - 32"	66 - 81 cm
X-LARGE	80 lbs. and over	36 kg and over	18" - 24"	45 - 60 cm	30" - 42"	76 - 106 cm	26" - 36"	66 - 91 cm

## Men's & Women's Shoe

SIZING	2XS	XS	S	M	L	XL	2XL
MEN	5 - 6	6 - 7	7 - 8	8 - 9	9 - 10	11 - 12	12 - 13
MEN - UK	3 - 4	4 - 5	5 - 6	6 - 7	7 - 8	9 - 10	10 - 11
MEN - EU	38 - 39.5	39.5 - 40.5	40.5 - 42	42 - 43	43 - 44.5	45.5 - 47	47 - 48
WOMEN	7 - 8	8 - 9	9 - 10	10 - 11	11 - 12	12 - 13	13 - 14
WOMEN - UK	5 - 6	6 - 7	7 - 8	8 - 9	9 - 10	10 - 11	11 - 12
WOMEN - EU	38 - 39	39 - 41	41 - 42	42 - 43	43 - 44	44 - 45	45 - 46

## Men's & Women's Boot

SIZING	XS	S	M	L	XL	2XL
MEN	6 - 6.5	7 - 7.5	8 - 8.5	9 - 9.5	10 - 10.5	11 - 11.5
MEN - UK	4	5	6	7	8	9
MEN - EU	39	40.5	42	43	44.5	45.5
WOMEN	8 - 8.5	9 - 9.5	10 - 10.5	11 - 11.5	N/A	N/A
WOMEN - UK	5.5	6.5	7.5	8.5	N/A	N/A
WOMEN - EU	38	39	40	41	N/A	N/A

## Men's Rashguards

MEN'S	XS	S	M	L	XL	2XL	3XL
CHEST	30" - 32"	32" - 34"	35" - 47"	38" - 40"	41" - 43"	44" - 46"	47" - 50"
CHEST - EU	76 - 81 cm	81 - 86.5 cm	90 - 94 cm	96.5 - 101.5 cm	104 - 109 cm	112 - 117 cm	119 - 127 cm





[WWW.SLIPPERYWETSUITS.COM](http://WWW.SLIPPERYWETSUITS.COM)

Specifications and prices subject to change without notice.

Slippery is a registered trademark. All rights reserved. ©2020 Slippery.

Reproduction of this catalog without written permission is prohibited.

## **PARTS EUROPE**

SLIPPERY PRODUCTS ARE AVAILABLE ONLY AT YOUR AUTHORIZED PARTS EUROPE DEALER.